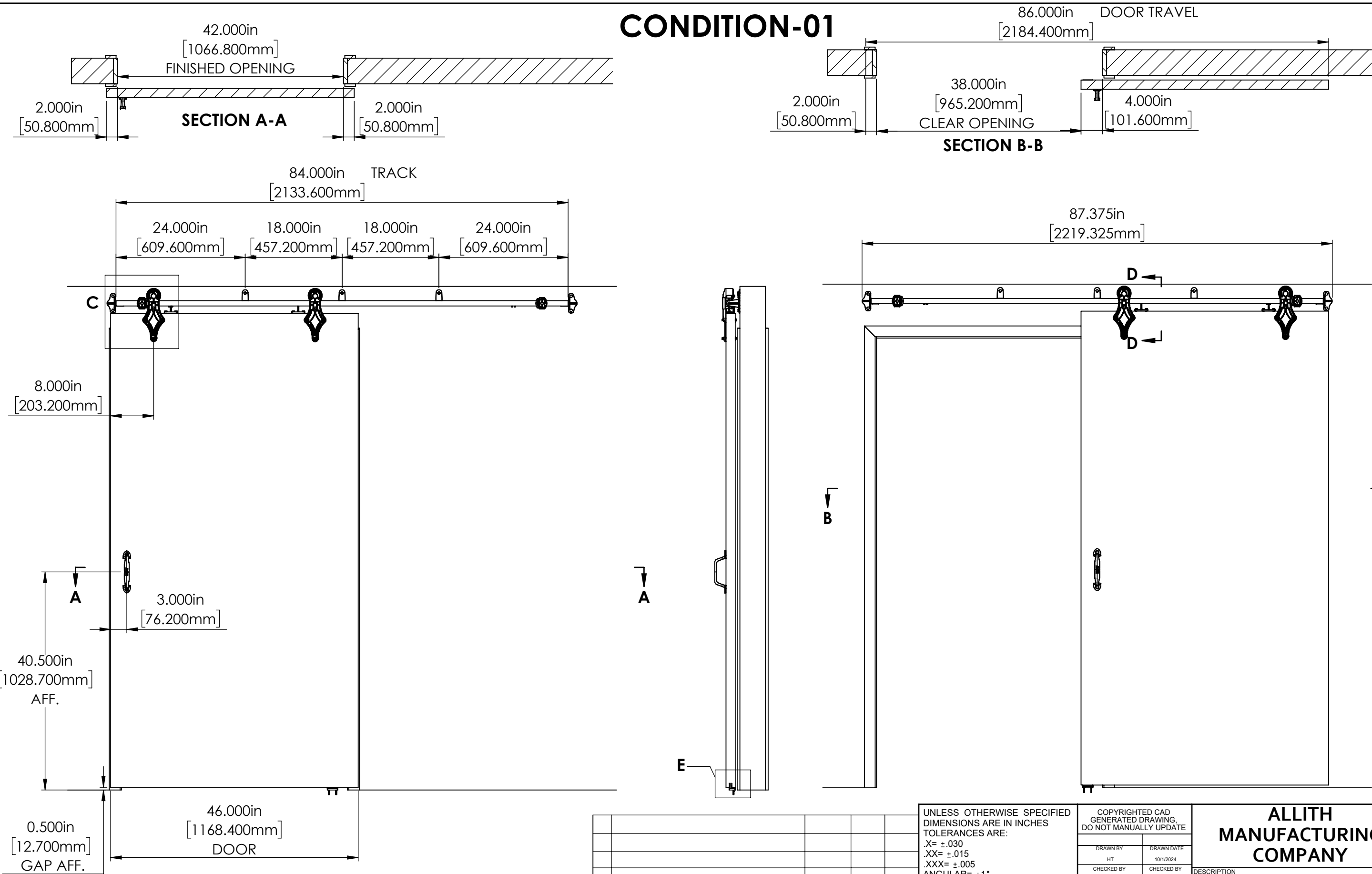


CONDITION-01



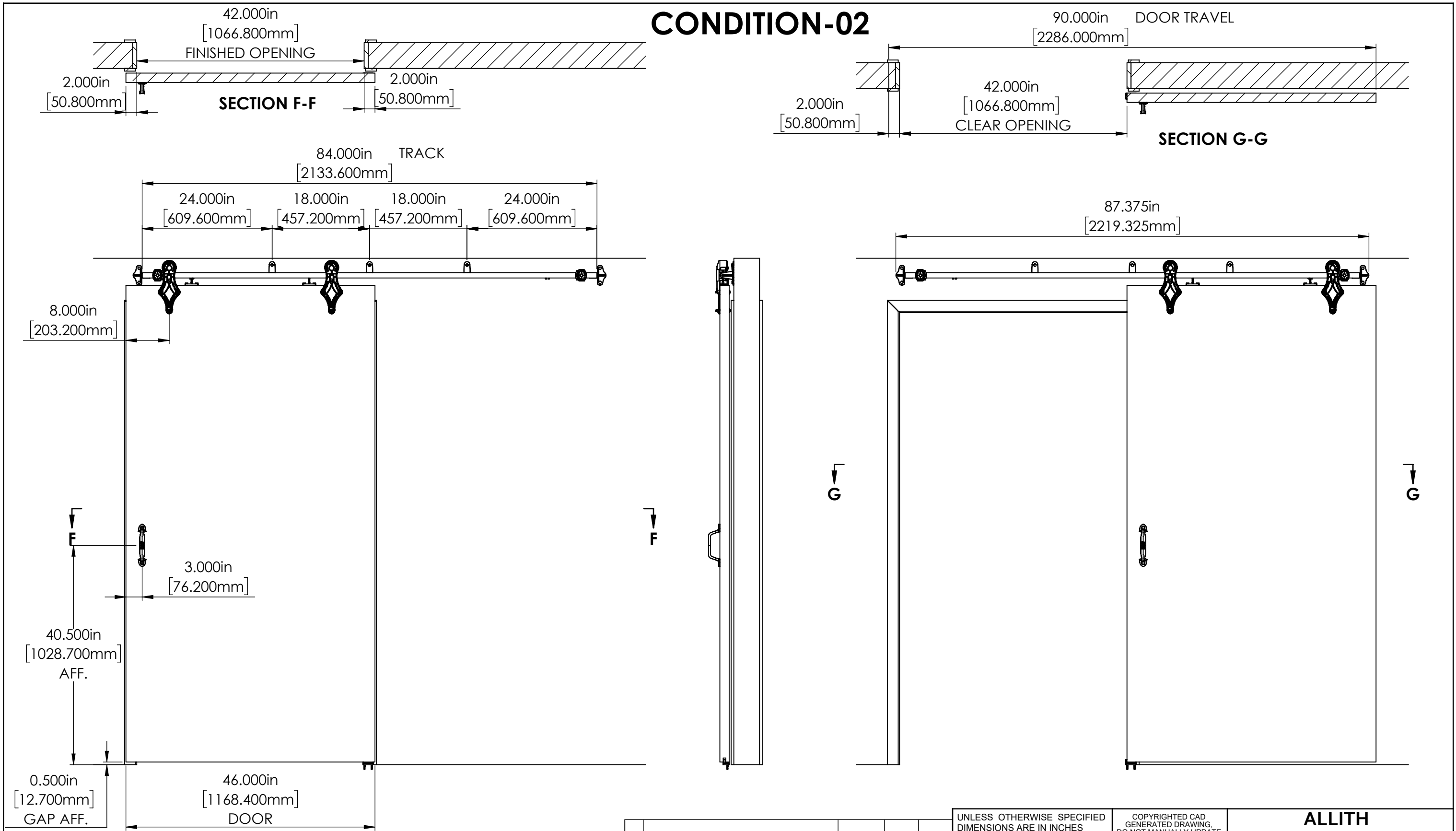
REV.	DESCRIPTION	DATE	BY	APPR'D
REVISION				
THE INFORMATION CONTAINED IN THIS DRAWING IS THE SOLE PROPERTY OF SCOTT WILLO SOLUTION ANY REPRODUCTION IN PART OR WHOLE WITHOUT THE WRITTEN PERMISSION OF SWS IS STRICTLY PROHIBITED.				

UNLESS OTHERWISE SPECIFIED
DIMENSIONS ARE IN INCHES
TOLERANCES ARE:
.X= ±.030
.XX= ±.015
.XXX= ±.005
ANGULAR= ±1°
MACHINED SURFACES TO HAVE
125 RMS FINISH
CONCENTRICITY= ±.002 T.I.R.
BREAK ALL SHARP EDGES

COPYRIGHTED CAD GENERATED DRAWING. DO NOT MANUALLY UPDATE	
DRAWN BY HT	DRAWN DATE 10/1/2024
CHECKED BY	CHECKED BY
APPROVED BY	APPROVED DATE
SHEET 2 OF 5	THIRD ANGLE PROJECTION
SCALE: 1:17	

ALLITH MANUFACTURING COMPANY	
DESCRIPTION No.101 Allith Sliding Door Soft-Stop Track System For Door Openings 42" Wide And Under.	
SIZE B	P/N 310-10-230
REV.	

CONDITION-02



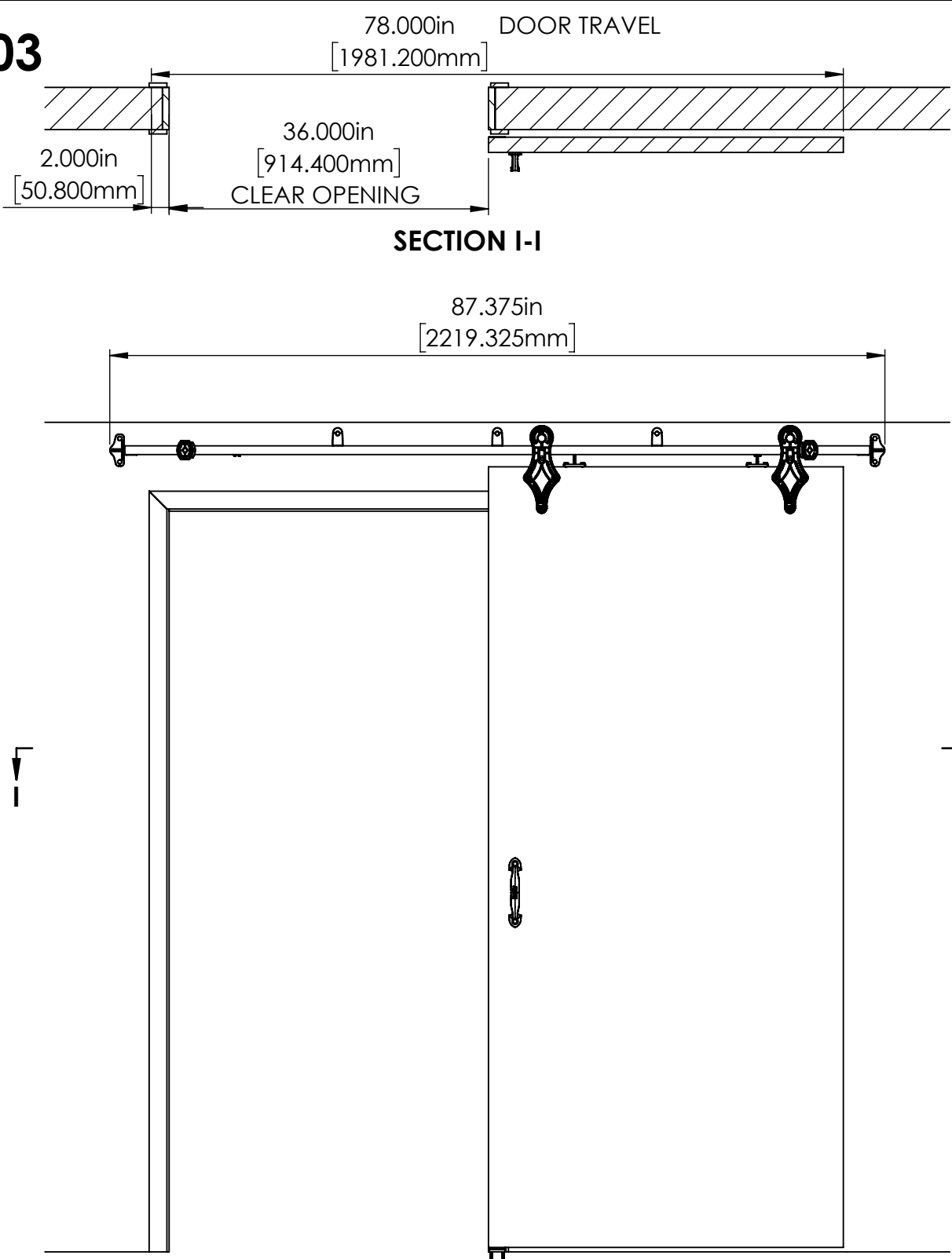
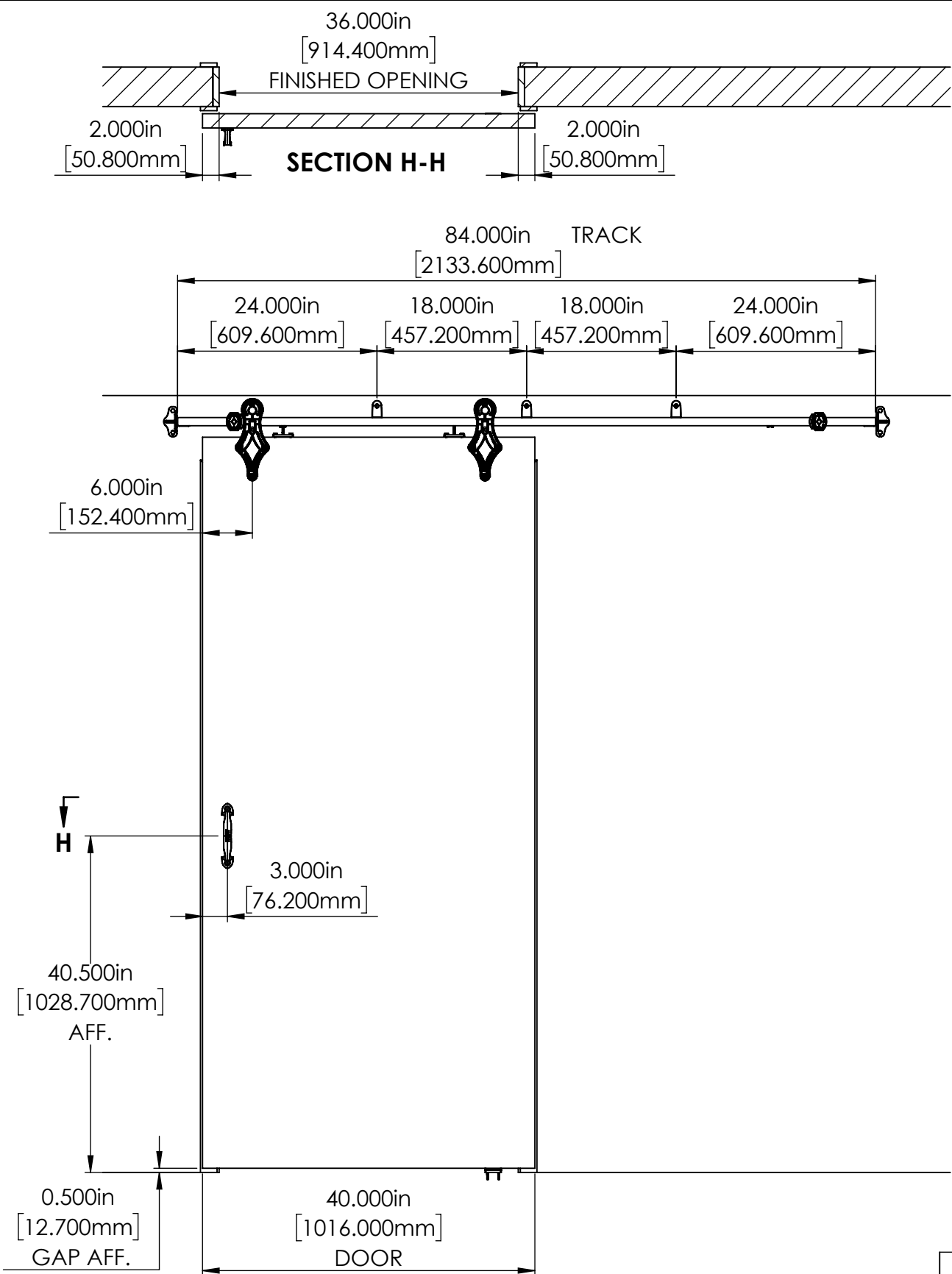
REV.	DESCRIPTION	DATE	BY	APPR'D
REVISION				
THE INFORMATION CONTAINED IN THIS DRAWING IS THE SOLE PROPERTY OF SCOTT WILLO SOLUTION ANY REPRODUCTION IN PART OR WHOLE WITHOUT THE WRITTEN PERMISSION OF SWS IS STRICTLY PROHIBITED.				

UNLESS OTHERWISE SPECIFIED
DIMENSIONS ARE IN INCHES
TOLERANCES ARE:
.X= ±.030
.XX= ±.015
.XXX= ±.005
ANGULAR= ±1°
MACHINED SURFACES TO HAVE
125 RMS FINISH
CONCENTRICITY= ±.002 T.I.R.
BREAK ALL SHARP EDGES

COPYRIGHTED CAD GENERATED DRAWING. DO NOT MANUALLY UPDATE	
DRAWN BY HT	DRAWN DATE 10/1/2024
CHECKED BY	CHECKED BY
APPROVED BY	APPROVED DATE
SHEET 3 OF 5	THIRD ANGLE PROJECTION
SCALE: 1:17	

ALLITH MANUFACTURING COMPANY	
DESCRIPTION No.101 Allith Sliding Door Soft-Stop Track System For Door Openings 42" Wide And Under.	
SIZE B	P/N 310-10-230
REV.	

CONDITION-03

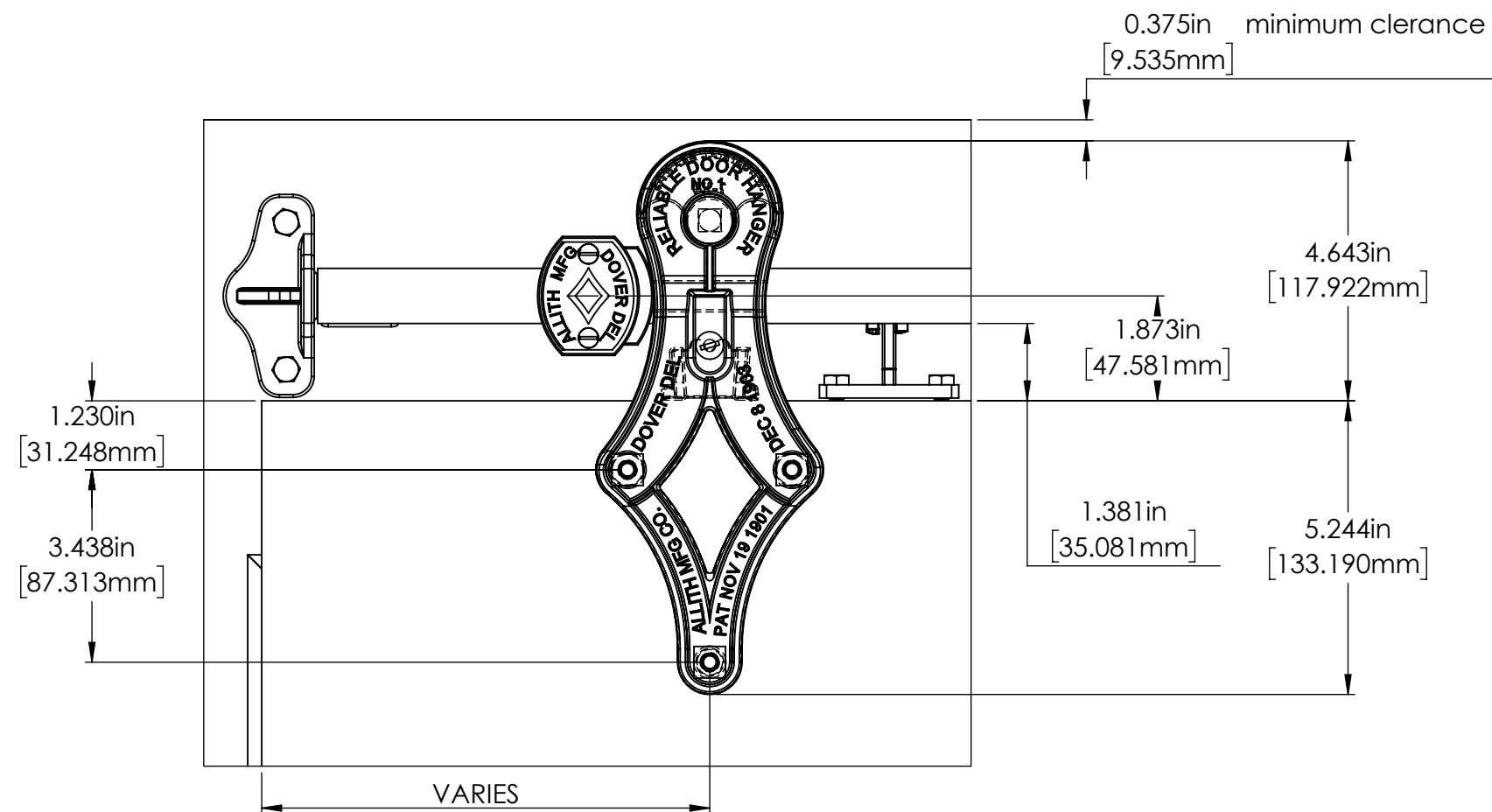


REV.	DESCRIPTION	DATE	BY	APPR'D
REVISION				
THE INFORMATION CONTAINED IN THIS DRAWING IS THE SOLE PROPERTY OF SCOTT WILLO SOLUTION ANY REPRODUCTION IN PART OR WHOLE WITHOUT THE WRITTEN PERMISSION OF SWS IS STRICTLY PROHIBITED.				

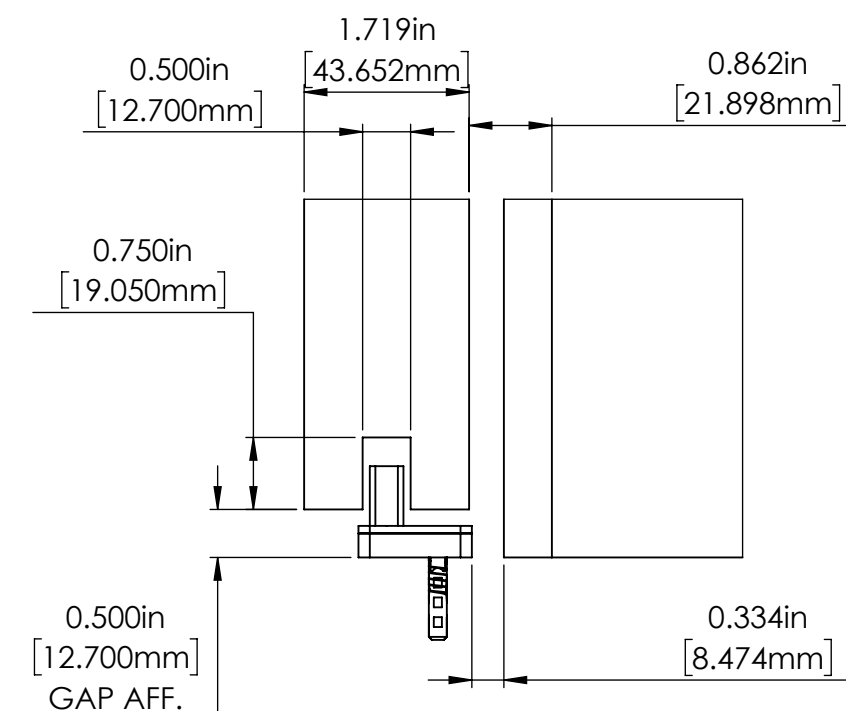
UNLESS OTHERWISE SPECIFIED
DIMENSIONS ARE IN INCHES
TOLERANCES ARE:
.X= ±.030
.XX= ±.015
.XXX= ±.005
ANGULAR= ±1°
MACHINED SURFACES TO HAVE
125 RMS FINISH
CONCENTRICITY= ±.002 T.I.R.
BREAK ALL SHARP EDGES

COPYRIGHTED CAD GENERATED DRAWING. DO NOT MANUALLY UPDATE	
DRAWN BY HT	DRAWN DATE 10/1/2024
CHECKED BY	CHECKED BY
APPROVED BY	APPROVED DATE
SHEET 4 OF 5	THIRD ANGLE PROJECTION
SCALE: 1:17	

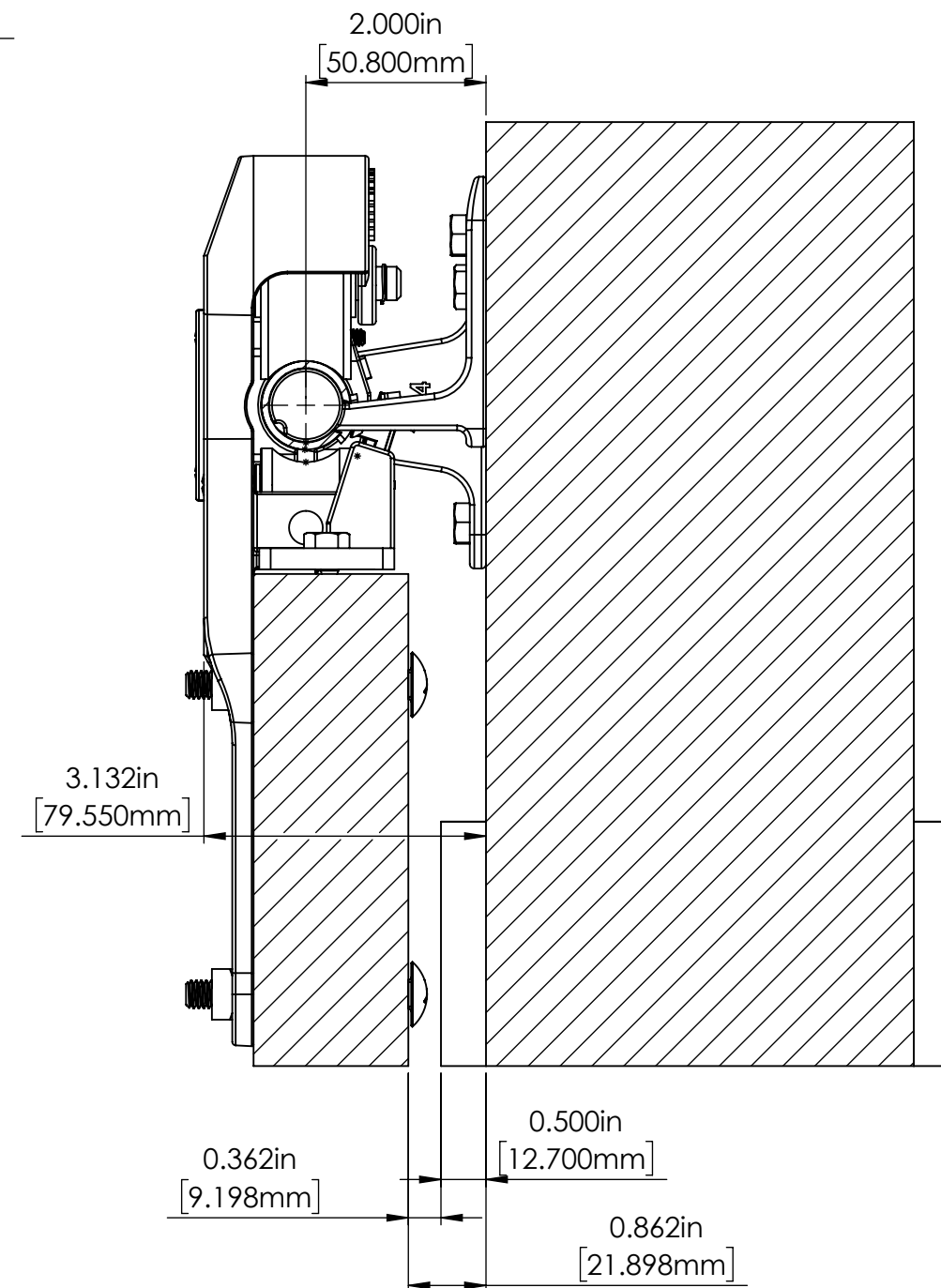
ALLITH MANUFACTURING COMPANY	
DESCRIPTION No.101 Allith Sliding Door Soft-Stop Track System For Door Openings 42" Wide And Under.	
SIZE B	P/N 310-10-230
REV.	



DETAIL C
SCALE 1 : 3



DETAIL E
SCALE 1 : 2



SECTION D-D
SCALE 1 : 2

REV.	DESCRIPTION	DATE	BY	APPR'D
REVISION				
THE INFORMATION CONTAINED IN THIS DRAWING IS THE SOLE PROPERTY OF SCOTT WILLO SOLUTION ANY REPRODUCTION IN PART OR WHOLE WITHOUT THE WRITTEN PERMISSION OF SWS IS STRICTLY PROHIBITED.				

UNLESS OTHERWISE SPECIFIED
DIMENSIONS ARE IN INCHES
TOLERANCES ARE:
.X= ± 0.030
.XX= ± 0.015
.XXX= ± 0.005
ANGULAR= $\pm 1^\circ$
MACHINED SURFACES TO HAVE
125 RMS FINISH
CONCENTRICITY= ± 0.002 T.I.R.
BREAK ALL SHARP EDGES

COPYRIGHTED CAD GENERATED DRAWING, DO NOT MANUALLY UPDATE	
DRAWN BY HT	DRAWN DATE 10/1/2024
CHECKED BY	CHECKED BY
APPROVED BY	APPROVED DATE
SHEET 5 OF 5	THIRD ANGLE PROJECTION
SCALE: 1:15	

ALLITH MANUFACTURING COMPANY	
DESCRIPTION No.101 Allith Sliding Door Soft-Stop Track System For Door Openings 42" Wide And Under.	
SIZE B	P/N 310-10-230
REV.	