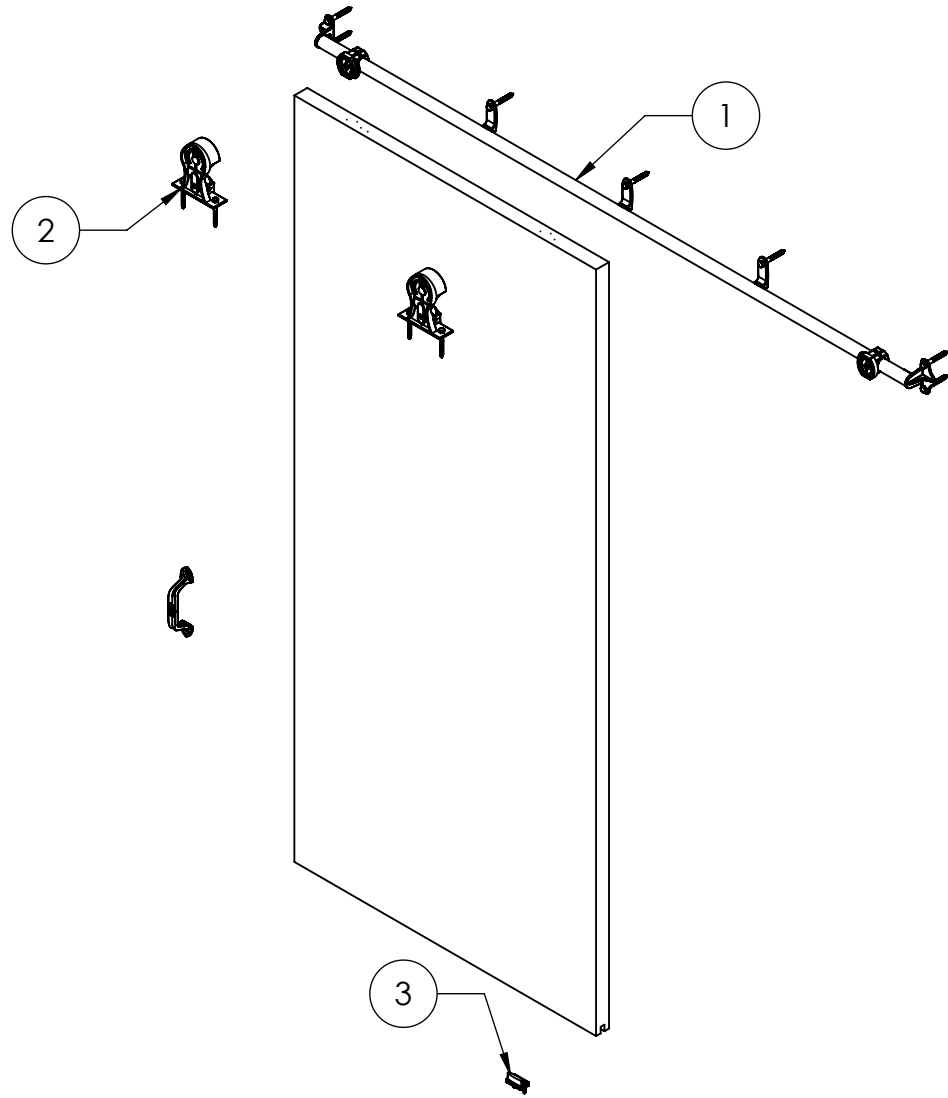
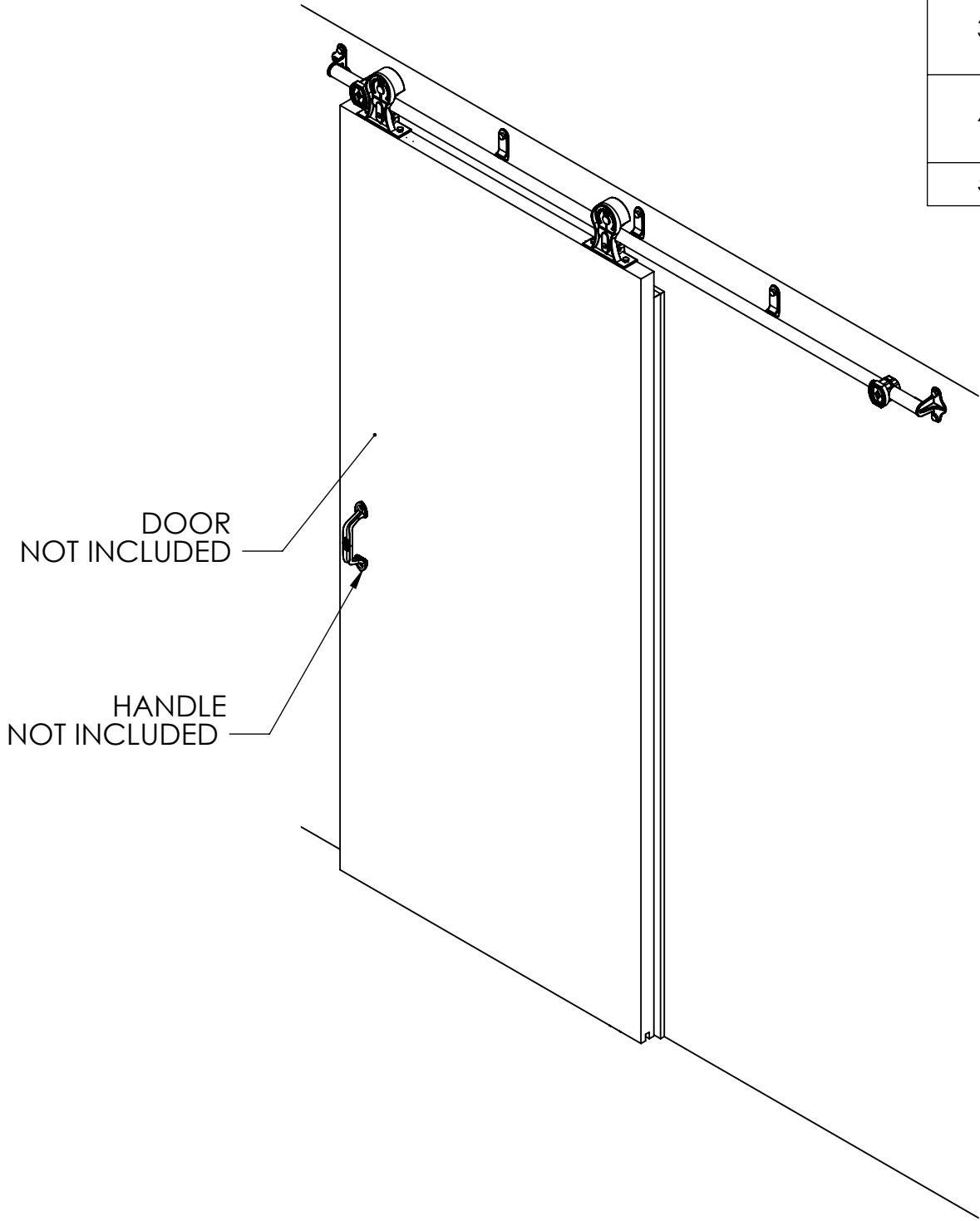


ITEM NO.	PART NUMBER	DESCRIPTION	MATERIAL	COLOR	SIZE	QTY.
1	312-20-180	No.2 Allith sliding track assembly with 1-5/8" offset for door openings 36" wide and under	Cast Iron and Steel	Black RAL 9005 (25-35 satin black)	78"	1
2	312-30-220	Hanger No.18-H4	Cast Iron	Black RAL 9005 (25-35 satin black)	0	2
3	370-60-121	Door guide No.50	Steel	Black RAL 9005 (25-35 gloss)	0	1
4	720-10-140	Retail packaging Scheme 010 for Series 200 track system	Cardboard Grade 200# Min.	Kraft Brown	0	1
5	780-10-210	Labor for track boxing	0	0	0	1



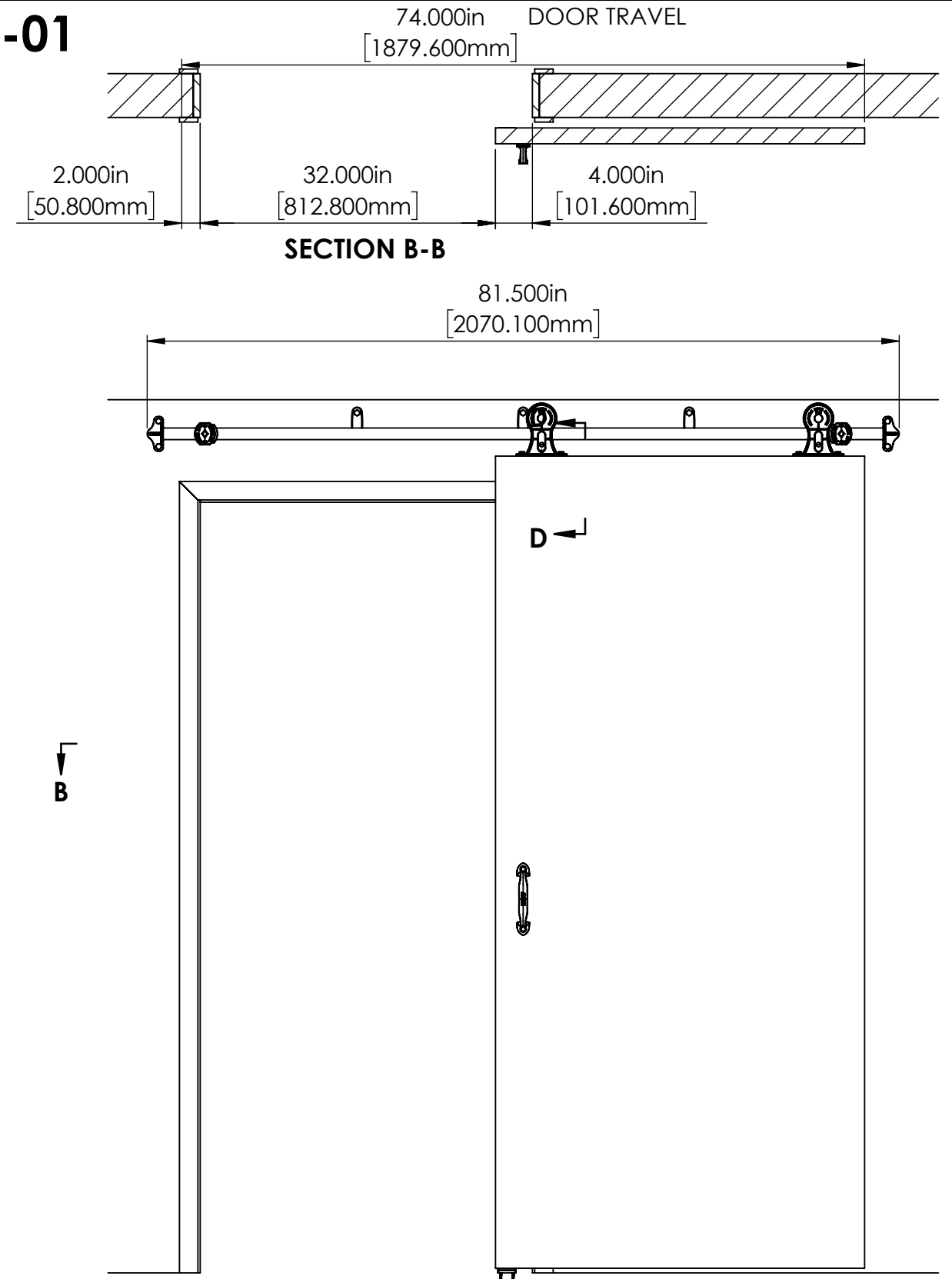
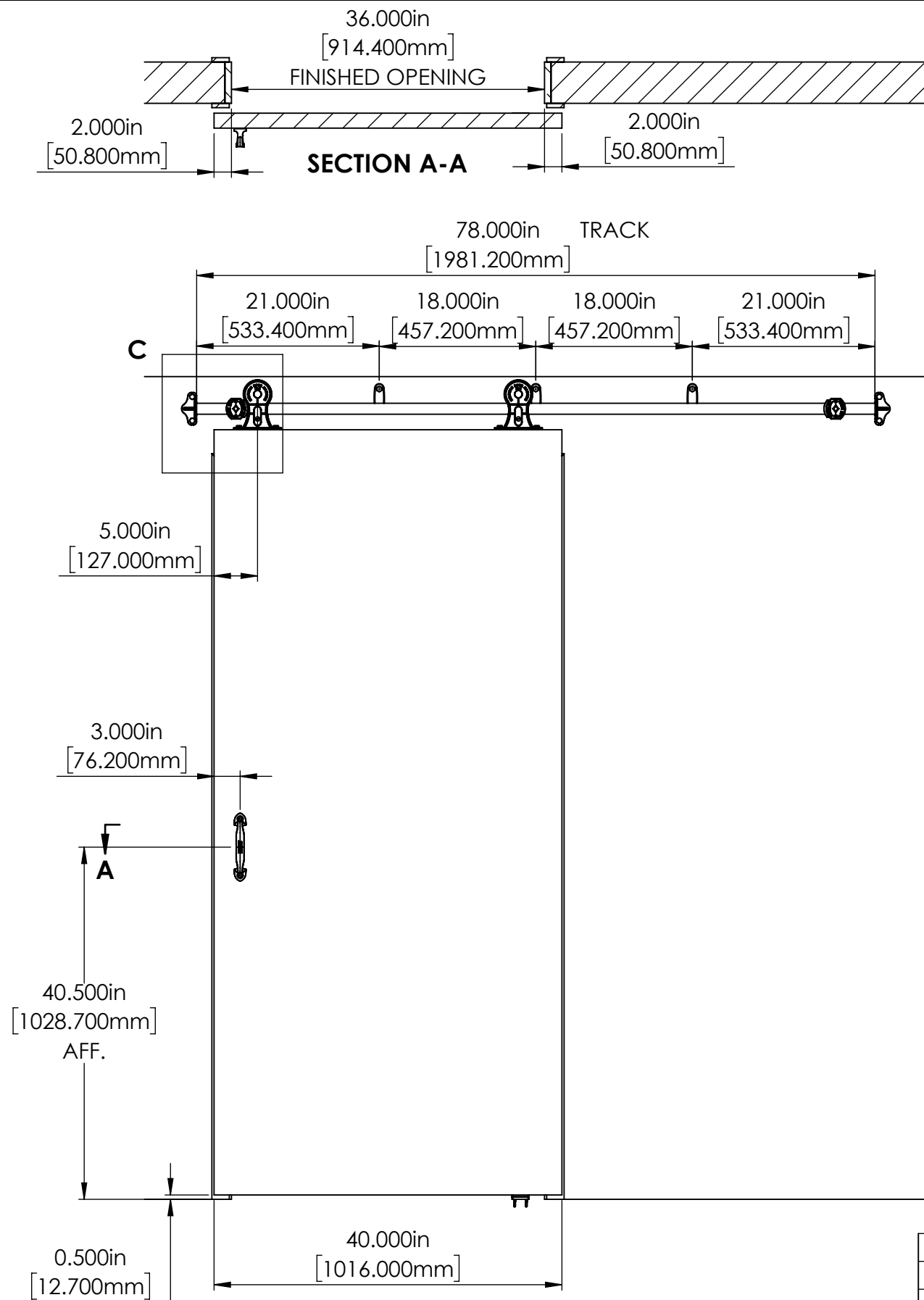
REV.	DESCRIPTION	DATE	BY	APPR'D
REVISION				
THE INFORMATION CONTAINED IN THIS DRAWING IS THE SOLE PROPERTY OF SCOTT WILLO SOLUTION ANY REPRODUCTION IN PART OR WHOLE WITHOUT THE WRITTEN PERMISSION OF SWS IS STRICTLY PROHIBITED.				

UNLESS OTHERWISE SPECIFIED
DIMENSIONS ARE IN INCHES
TOLERANCES ARE:
.X= ±.030
.XX= ±.015
.XXX= ±.005
ANGULAR= ±1°
MACHINED SURFACES TO HAVE
125 RMS FINISH
CONCENTRICITY= ±.002 T.I.R.
BREAK ALL SHARP EDGES

COPYRIGHTED CAD GENERATED DRAWING, DO NOT MANUALLY UPDATE	
DRAWN BY HT	DRAWN DATE 10/4/2024
CHECKED BY	CHECKED BY
APPROVED BY	APPROVED DATE
SHEET 1 OF 5	THIRD ANGLE PROJECTION
SCALE: 1:15	

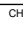
ALLITH MANUFACTURING COMPANY	
DESCRIPTION No.218 Allith sliding door track system for door openings 36" wide and under	
SIZE B	P/N 312-10-570
REV.	

CONDITION-01



REV.	DESCRIPTION	DATE	BY	APPR'D
REVISION				
THE INFORMATION CONTAINED IN THIS DRAWING IS THE SOLE PROPERTY OF SCOTT WILLO SOLUTION ANY REPRODUCTION IN PART OR WHOLE WITHOUT THE WRITTEN PERMISSION OF SWS IS STRICTLY PROHIBITED.				

UNLESS OTHERWISE SPECIFIED
DIMENSIONS ARE IN INCHES
TOLERANCES ARE:
.X= $\pm .030$
.XX= $\pm .015$
.XXX= $\pm .005$
ANGULAR= $\pm 1^\circ$
MACHINED SURFACES TO HAVE
125 RMS FINISH
CONCENTRICITY= $\pm .002$ T.I.R.
BREAK ALL SHARP EDGES

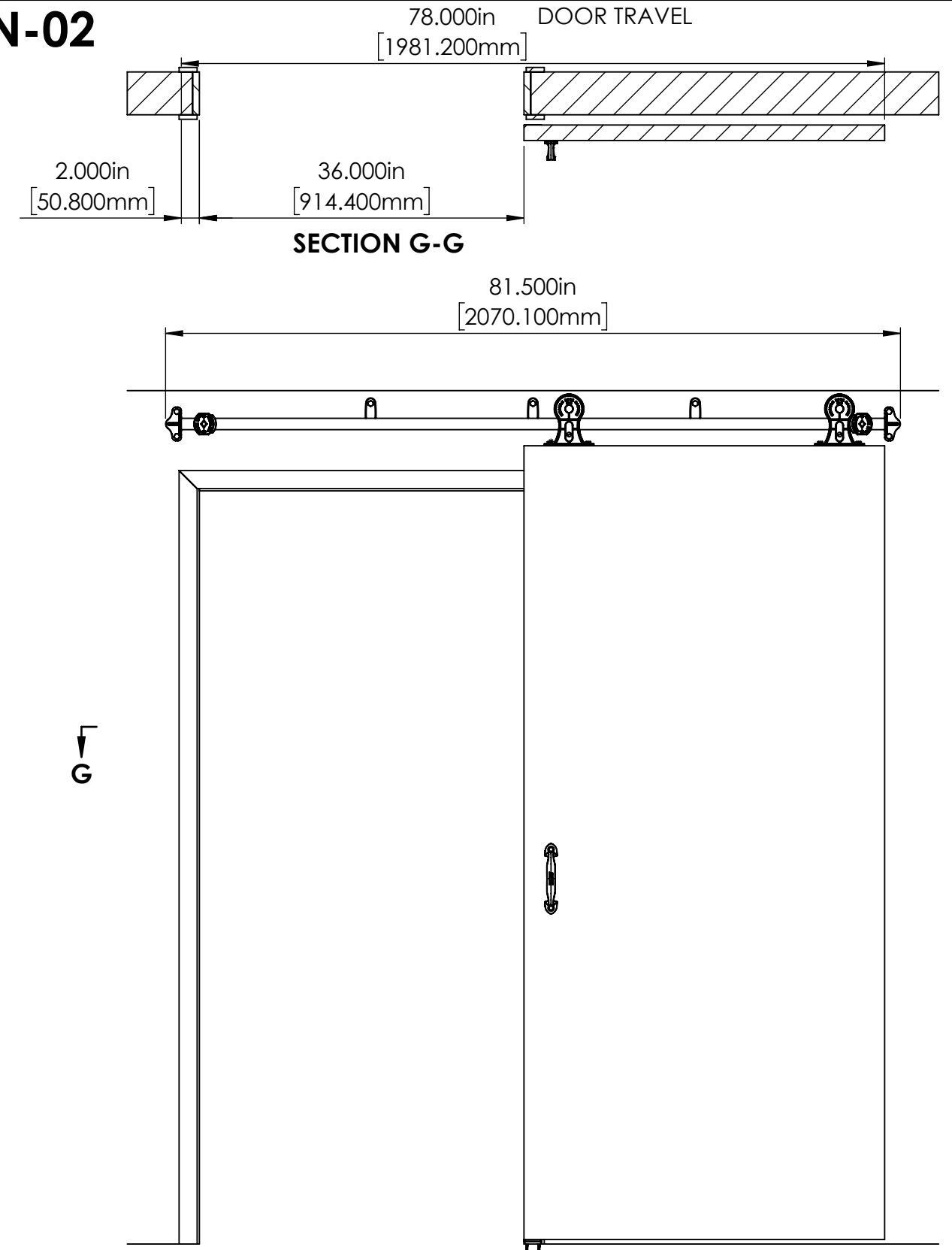
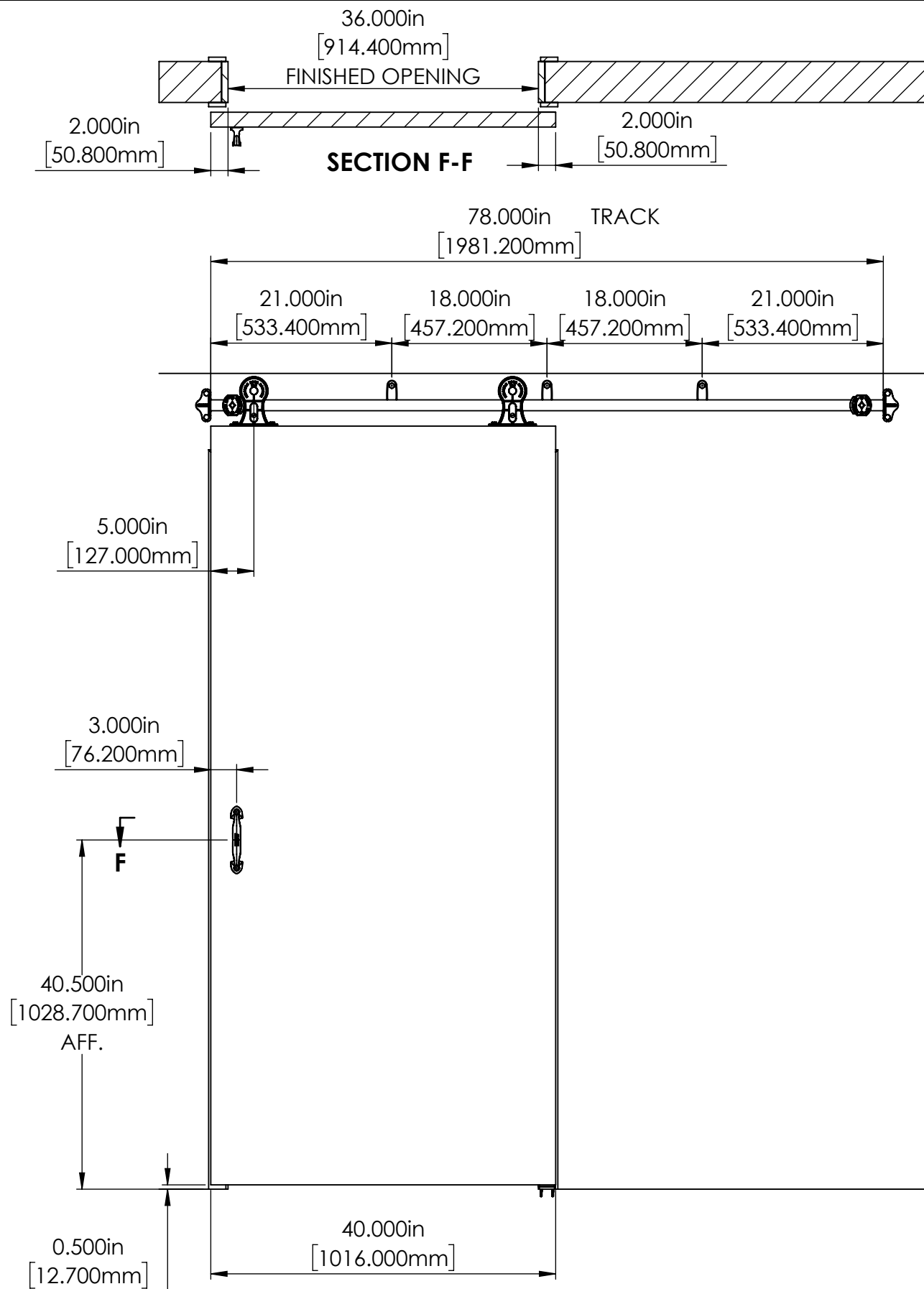
COPYRIGHTED CAD GENERATED DRAWING, DO NOT MANUALLY UPDATE	
DRAWN BY	DRAWN DATE
HT	10/4/2024
CHECKED BY	CHECKED DATE
APPROVED BY	APPROVED DATE
SHEET 2 OF 5	 THIRD ANGLE PROJECTION
SCALE: 1:16	

**ALLITH
MANUFACTURING
COMPANY**

DESCRIPTION	
DATE	No.218 Allith sliding door track system for door openings 36" wide and under


SIZE	P/N	RE
B	312-10-570	

CONDITION-02



REV.	DESCRIPTION	DATE	BY	APPR.
REVISION				
THE INFORMATION CONTAINED IN THIS DRAWING IS THE SOLE PROPERTY OF SCOTT WILLO SOLUTION ANY REPRODUCTION IN PART OR WHOLE WITHOUT THE WRITTEN PERMISSION OF SWS IS STRICTLY PROHIBITED.				

UNLESS OTHERWISE SPECIFIED
DIMENSIONS ARE IN INCHES
TOLERANCES ARE:
.X= $\pm .030$
.XX= $\pm .015$
.XXX= $\pm .005$
ANGULAR= $\pm 1^\circ$
MACHINED SURFACES TO HAVE
125 RMS FINISH
CONCENTRICITY= $\pm .002$ T.I.R.
BREAK ALL SHARP EDGES

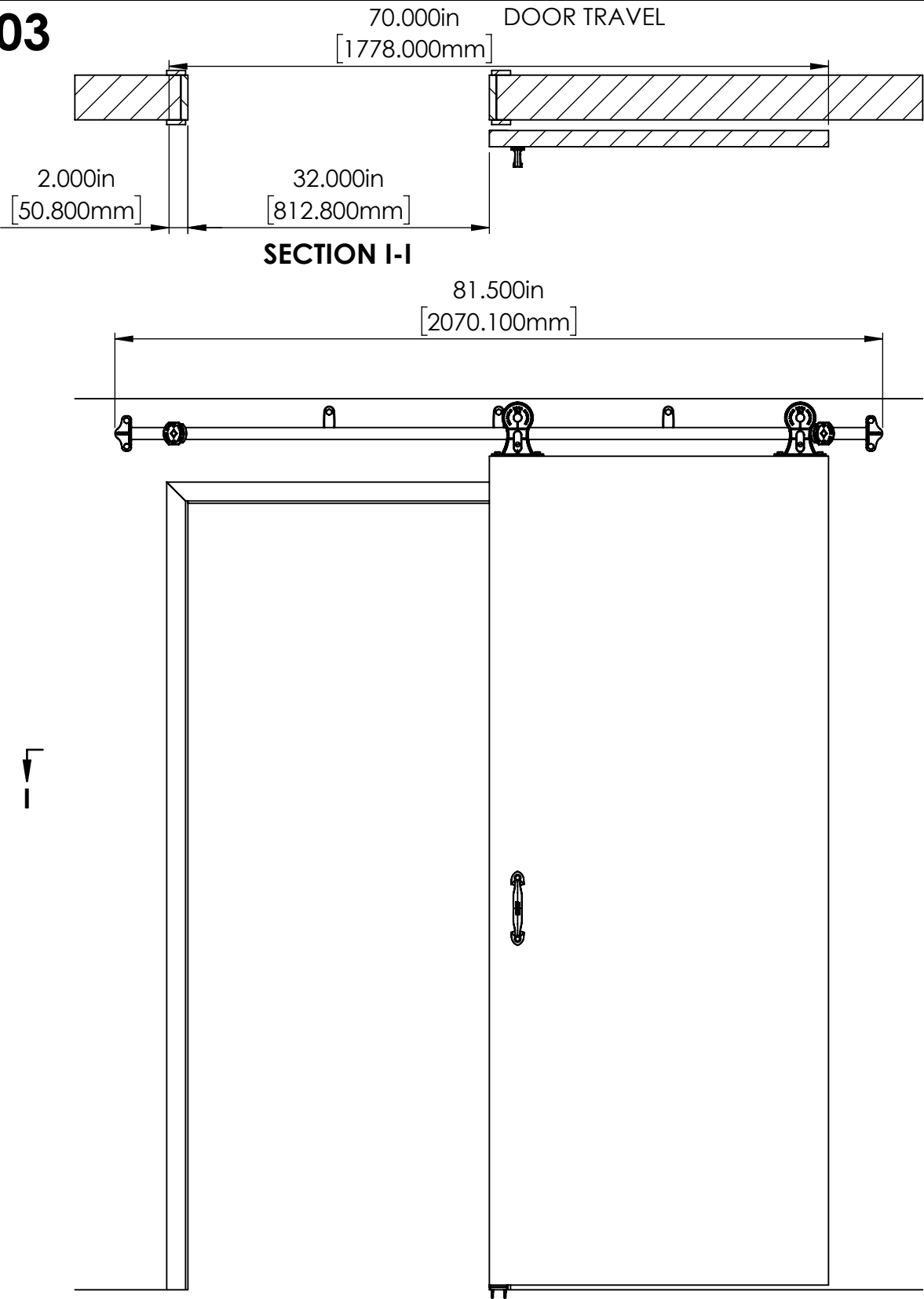
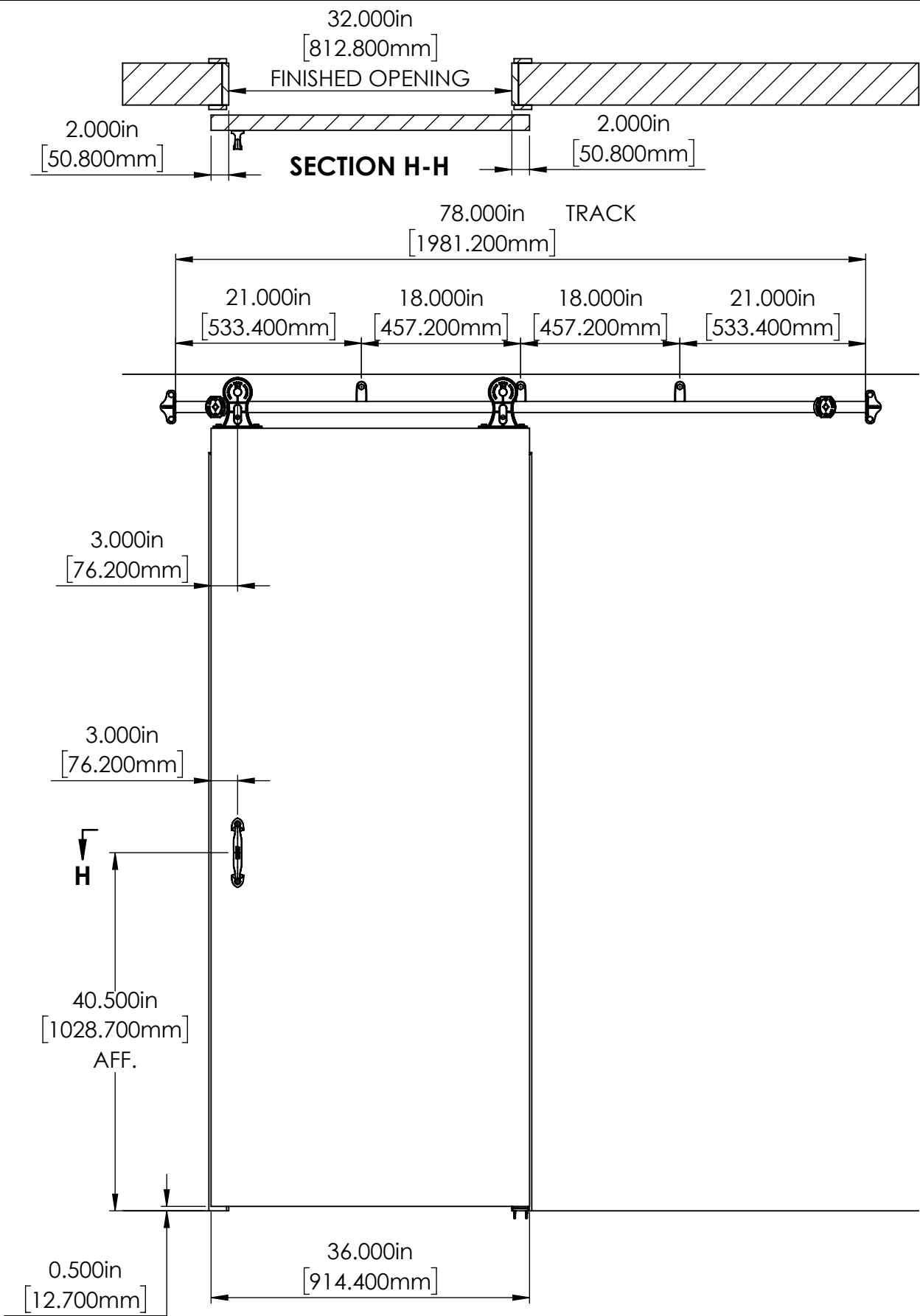
COPYRIGHTED CAD GENERATED DRAWING, DO NOT MANUALLY UPDATE	
DRAWN BY HT	DRAWN DATE 10/4/2024
CHECKED BY	CHECKED BY
APPROVED BY	APPROVED DATE
SHEET 3 OF 5	
SCALE: 1:16	 THIRD ANGLE PROJECTION

**ALLITH
MANUFACTURING
COMPANY**

DESCRIPTION	
DATE	No.218 Allith sliding door track system for door openings 36" wide and under

SIZE	P/N	RE
B	312-10-570	

CONDITION-03

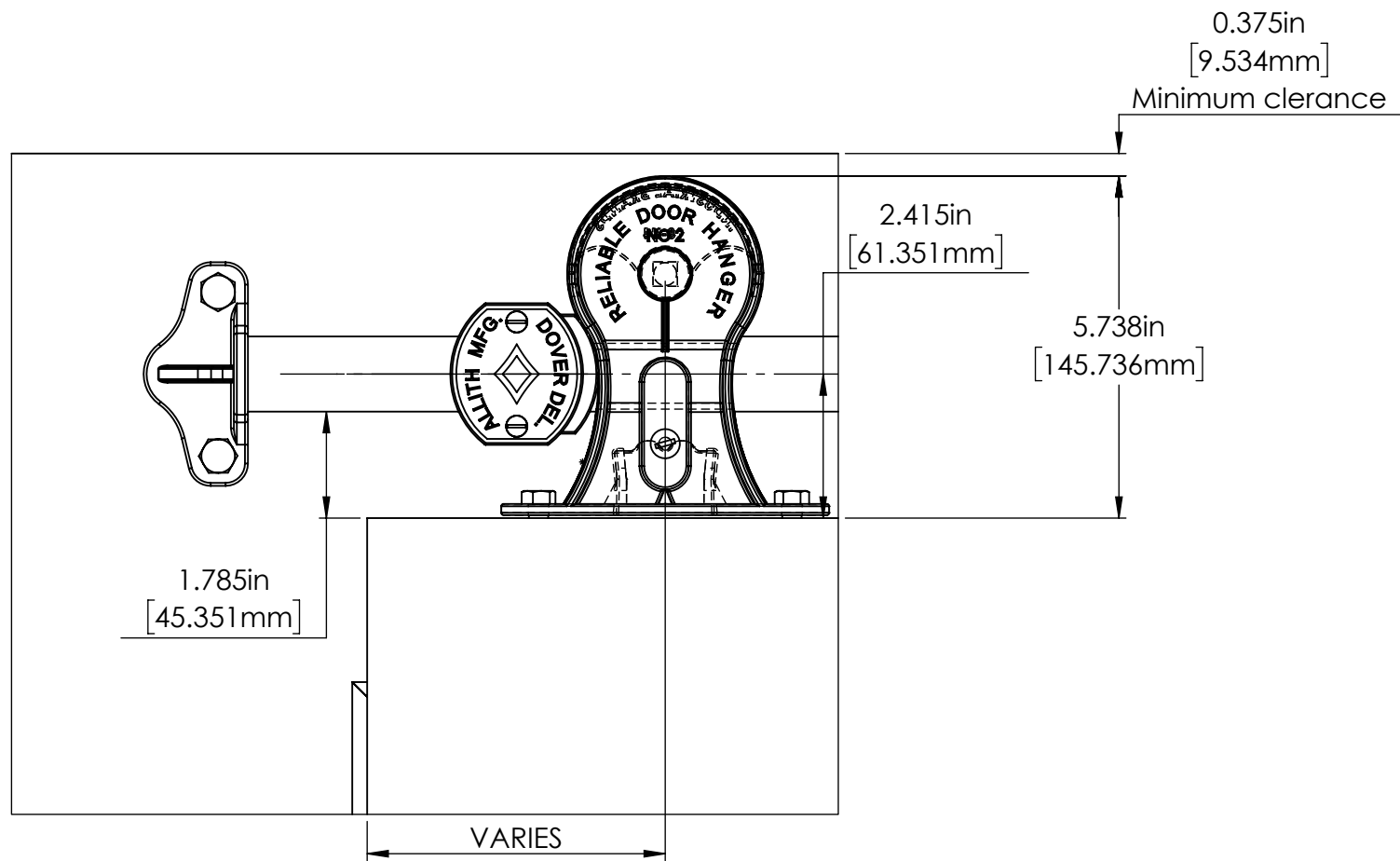


REV.	DESCRIPTION	DATE	BY	APPR'D
REVISION				
THE INFORMATION CONTAINED IN THIS DRAWING IS THE SOLE PROPERTY OF SCOTT WILLO SOLUTION ANY REPRODUCTION IN PART OR WHOLE WITHOUT THE WRITTEN PERMISSION OF SWS IS STRICTLY PROHIBITED.				

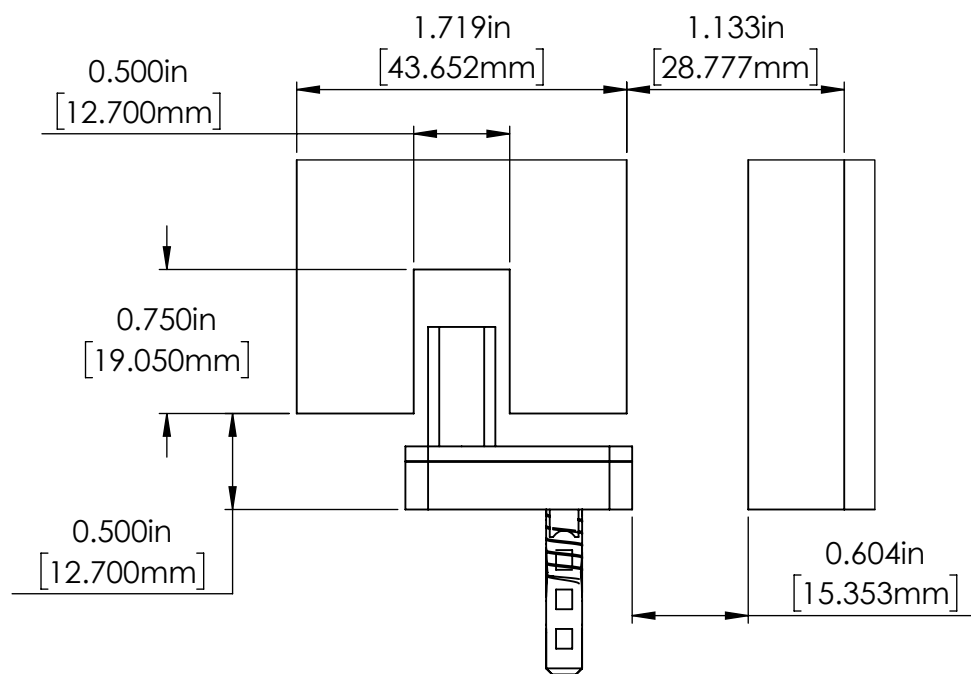
UNLESS OTHERWISE SPECIFIED
DIMENSIONS ARE IN INCHES
TOLERANCES ARE:
.X= ±.030
.XX= ±.015
.XXX= ±.005
ANGULAR= ±1°
MACHINED SURFACES TO HAVE
125 RMS FINISH
CONCENTRICITY= ±.002 T.I.R.
BREAK ALL SHARP EDGES

COPYRIGHTED CAD GENERATED DRAWING. DO NOT MANUALLY UPDATE	
DRAWN BY HT	DRAWN DATE 10/4/2024
CHECKED BY	CHECKED BY
APPROVED BY	APPROVED DATE
SHEET 4 OF 5	THIRD ANGLE PROJECTION
SCALE: 1:16	

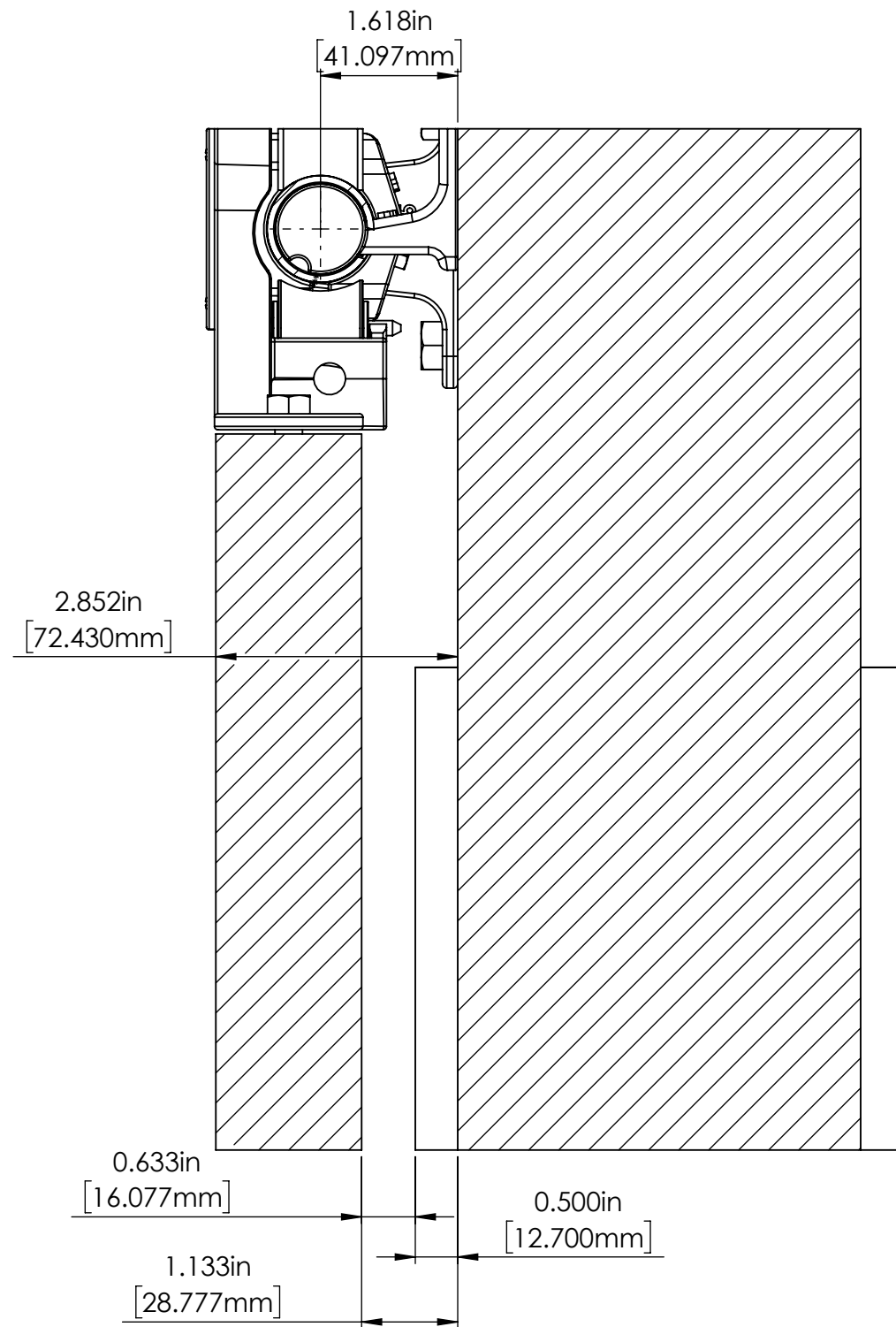
ALLITH MANUFACTURING COMPANY	
DESCRIPTION No.218 Allith sliding door track system for door openings 36" wide and under	
SIZE B	P/N 312-10-570
REV.	



DETAIL C
SCALE 1 : 3



DETAIL E
SCALE 1 : 1



SECTION D-D
SCALE 1 : 2

REV.	DESCRIPTION	DATE	BY	APPR'D
REVISION				
THE INFORMATION CONTAINED IN THIS DRAWING IS THE SOLE PROPERTY OF SCOTT WILLO SOLUTION ANY REPRODUCTION IN PART OR WHOLE WITHOUT THE WRITTEN PERMISSION OF SWS IS STRICTLY PROHIBITED.				

UNLESS OTHERWISE SPECIFIED
DIMENSIONS ARE IN INCHES
TOLERANCES ARE:
.X= ±.030
.XX= ±.015
.XXX= ±.005
ANGULAR= ±1°
MACHINED SURFACES TO HAVE
125 RMS FINISH
CONCENTRICITY= ±.002 T.I.R.
BREAK ALL SHARP EDGES

COPYRIGHTED CAD GENERATED DRAWING, DO NOT MANUALLY UPDATE	
DRAWN BY HT	DRAWN DATE 10/4/2024
CHECKED BY	CHECKED BY
APPROVED BY	APPROVED DATE
SHEET 5 OF 5	
SCALE: 1:15	THIRD ANGLE PROJECTION

ALLITH MANUFACTURING COMPANY	
DESCRIPTION No.218 Allith sliding door track system for door openings 36" wide and under	
SIZE B	P/N 312-10-570
REV.	