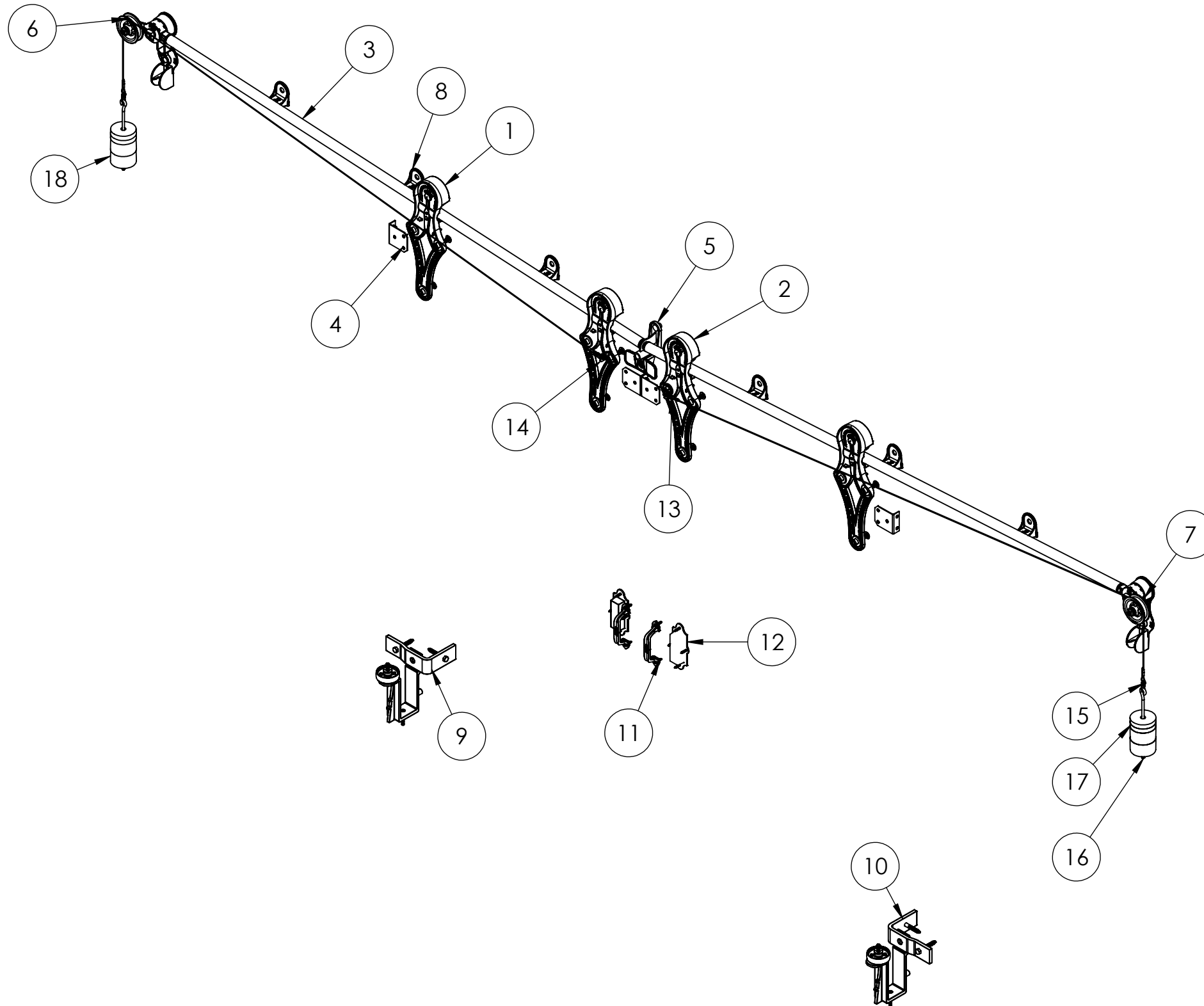


ITEM NO.	PART NUMBER	TITLE LINE 1	MATERIAL	COLOR	SIZE	QTY.
1	314-30-121	Hanger No.3-H4 boxed	Cast iron	Black RAL 9005 (25-35 gloss)	0	2
2	314-30-121	Hanger No.3-H4 boxed	Cast iron	Black RAL 9005 (25-35 gloss)	0	2
3	314-40-471	Track No.3-T4 1-1/2" round track without brackets for 44" single/96" double door opening	1020 (DOM) steel tubing	Black RAL 9005 (25-35 gloss)	1-1/2" x 98"	2
4	314-50-135	Bumper shoe L-bracket set no. 313	Steel	Black RAL 9005 (25-35 gloss)	0	4
5	314-50-223	Center stop fixture No.331	Cast iron	Black RAL 9005 (25-35 gloss)	0	1
6	314-50-242	Combined bumper, cord pulley and end track support No.347	Steel	Black RAL 9005 (25-35 gloss)	0	1
7	314-50-242	Combined bumper, cord pulley and end track support No.347	Steel	Black RAL 9005 (25-35 gloss)	0	1
8	314-60-120	Track to wall center mount bracket No.3-C4	Steel	Black RAL 9005 (25-35 gloss)	0	6
9	370-60-233	Door guide No.364	Steel	Black RAL 9005 (25-35 gloss)	0	1
10	370-60-233	Door guide No.364	Steel	Black RAL 9005 (25-35 gloss)	0	1
11	380-30-121	Raised Door Pull No.305	Cast iron	Black RAL 9005 (25-35 gloss)	0	2
12	380-30-223	Flush door pull No.306 Shallow	Cast iron	Black RAL 9005 (25-35 gloss)	0	2
13	380-70-125	Wire rope sash cord assembled with crimping sleeve, No.323	Stainless steel 18-8	Mill finish	1 10" x 1/8"	2
14	380-70-151	Wire rope cable or chain bracket No.403	Steel	Black RAL 9005 (25-35 gloss)	0	2
15	380-70-156	Threaded connecting link	Steel	Galvanized	0	4
16	380-70-220	Weight holder No.374	Steel	Black RAL 9005 (25-35 gloss)	0	2
17	380-70-230	Counterbalance weight No.384	Ductile iron 65-45-12	Black RAL 9005 (25-35 gloss)	4-1/8" x 13/16"	4
18	380-70-250	Counterbalance weight No.384	Ductile iron 65-45-12	Black RAL 9005 (25-35 gloss)	4-1/8" x - 2-13/16"	4

					UNLESS OTHERWISE SPECIFIED DIMENSIONS ARE IN INCHES TOLERANCES ARE: .X= ±.030 .XX= ±.015 .XXX= ±.005 ANGULAR= ±1° MACHINED SURFACES TO HAVE 125 RMS FINISH CONCENTRICITY= ±.002 T.I.R. BREAK ALL SHARP EDGES	COPYRIGHTED CAD GENERATED DRAWING. DO NOT MANUALLY UPDATE		ALLLITH MANUFACTURING COMPANY	
						DRAWN BY HT	DRAWN DATE 27-05-2025		
						CHECKED BY	CHECKED BY	DESCRIPTION No. 1796 Bi-parting Allith sliding fire door track system for 96" wide opening	
						APPROVED BY	APPROVED DATE		
REV. DESCRIPTION DATE BY APPR'D						SHEET 1 OF 4	SCALE: 1:32	THIRD ANGLE PROJECTION	SIZE P/N B 316-10-550

THE INFORMATION CONTAINED IN THIS DRAWING IS THE SOLE PROPERTY OF SCOTT WILLO SOLUTION ANY REPRODUCTION IN PART OR WHOLE WITHOUT THE WRITTEN PERMISSION OF SWS IS STRICTLY PROHIBITED.



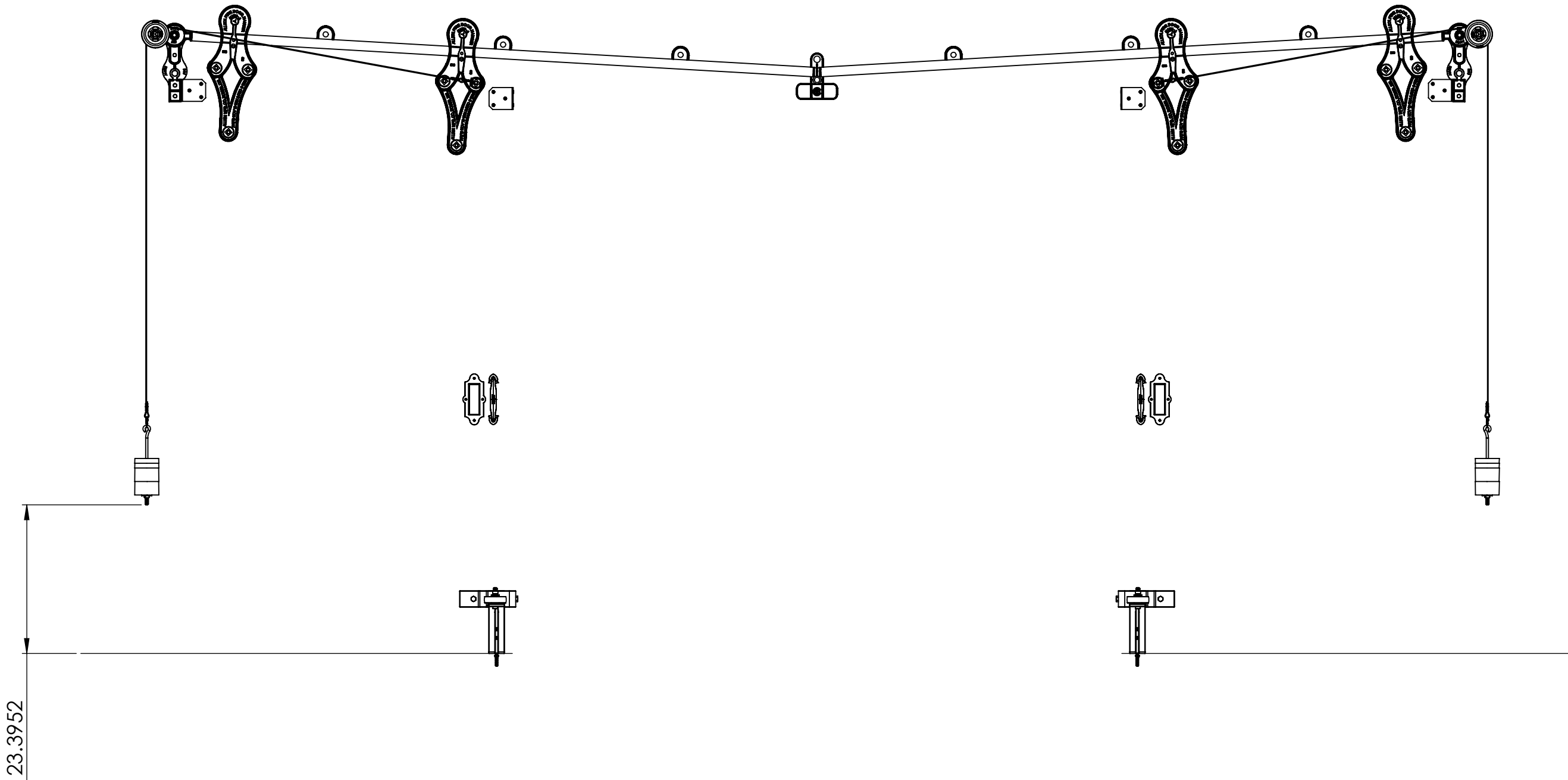
REV.	DESCRIPTION	DATE	BY	APPR'D
REVISION				
THE INFORMATION CONTAINED IN THIS DRAWING IS THE SOLE PROPERTY OF SCOTT WILLO SOLUTION ANY REPRODUCTION IN PART OR WHOLE WITHOUT THE WRITTEN PERMISSION OF SWS IS STRICTLY PROHIBITED.				

UNLESS OTHERWISE SPECIFIED
DIMENSIONS ARE IN INCHES
TOLERANCES ARE:
.X= $\pm .030$
.XX= $\pm .015$
.XXX= $\pm .005$
ANGULAR= $\pm 1^\circ$
MACHINED SURFACES TO HAVE
125 RMS FINISH
CONCENTRICITY= $\pm .002$ T.I.R.
BREAK ALL SHARP EDGES

COPYRIGHTED CAD GENERATED DRAWING, DO NOT MANUALLY UPDATE	
DRAWN BY HT	DRAWN DATE 27-05-2025
CHECKED BY	CHECKED BY
APPROVED BY	APPROVED DATE
SHEET 2 OF 4	THIRD ANGLE PROJECTION
SCALE: 1:18	

ALLITH MANUFACTURING COMPANY	
DESCRIPTION No. 1796 Bi-parting Allith sliding fire door track system for 96" wide opening	
SIZE B	P/N 316-10-550
REV.	

OPEN CONDITION



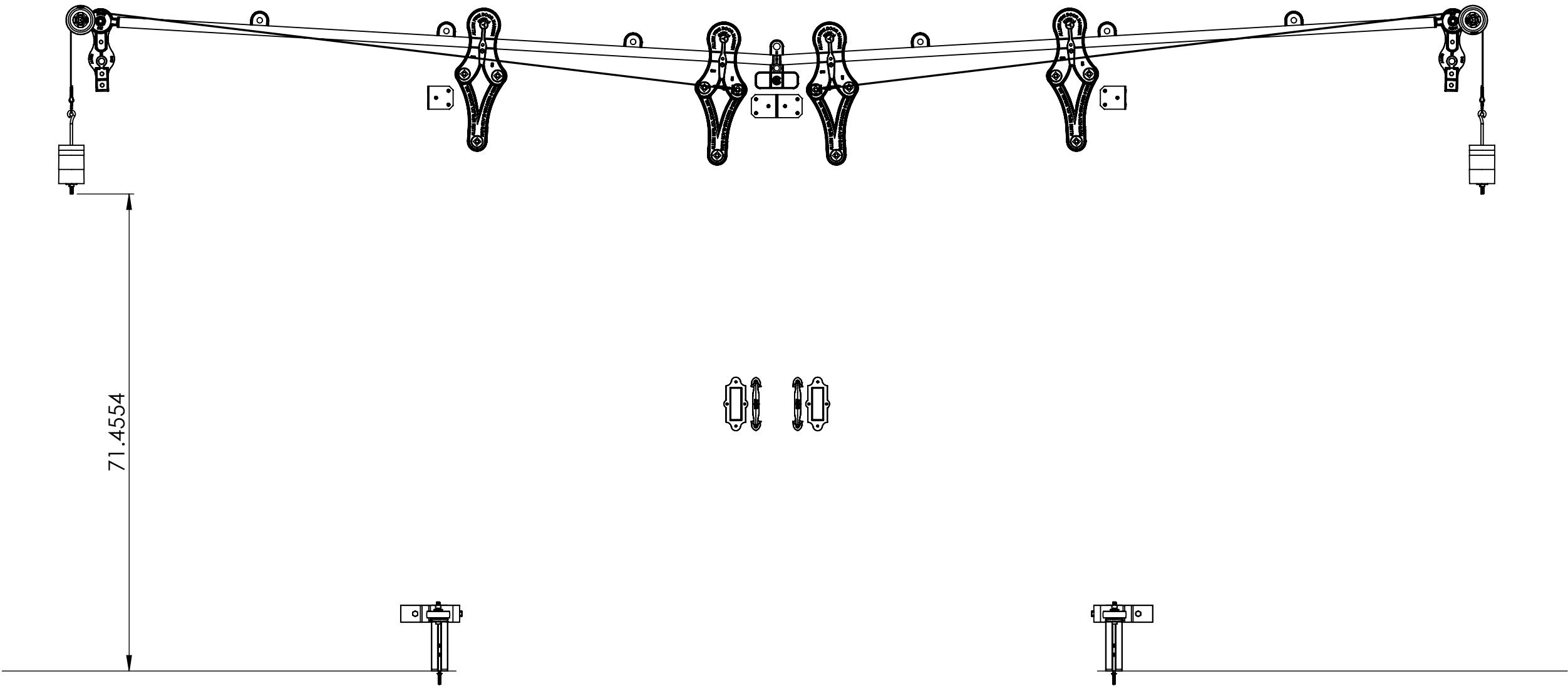
REV.	DESCRIPTION	DATE	BY	APPR'D
REVISION				
THE INFORMATION CONTAINED IN THIS DRAWING IS THE SOLE PROPERTY OF SCOTT WILLO SOLUTION ANY REPRODUCTION IN PART OR WHOLE WITHOUT THE WRITTEN PERMISSION OF SWS IS STRICTLY PROHIBITED.				

UNLESS OTHERWISE SPECIFIED
DIMENSIONS ARE IN INCHES
TOLERANCES ARE:
.X= ±.030
.XX= ±.015
.XXX= ±.005
ANGULAR= ±1°
MACHINED SURFACES TO HAVE
125 RMS FINISH
CONCENTRICITY= ±.002 T.I.R.
BREAK ALL SHARP EDGES

COPYRIGHTED CAD GENERATED DRAWING. DO NOT MANUALLY UPDATE	
DRAWN BY HT	DRAWN DATE 27-05-2025
CHECKED BY	CHECKED BY
APPROVED BY	APPROVED DATE
SHEET 3 OF 4	
SCALE: 1:18	

ALLITH MANUFACTURING COMPANY	
DESCRIPTION No. 1796 Bi-parting Allith sliding fire door track system for 96" wide opening	
SIZE B	P/N 316-10-550
REV.	

CLOSE CONDITION



REV.	DESCRIPTION	DATE	BY	APPR'D

REVISION

THE INFORMATION CONTAINED IN THIS DRAWING IS THE SOLE PROPERTY OF SCOTT WILLO SOLUTION ANY REPRODUCTION IN PART OR WHOLE WITHOUT THE WRITTEN PERMISSION OF SWS IS STRICTLY PROHIBITED.

UNLESS OTHERWISE SPECIFIED
DIMENSIONS ARE IN INCHES
TOLERANCES ARE:
.X= ±.030
.XX= ±.015
.XXX= ±.005
ANGULAR= ±1°
MACHINED SURFACES TO HAVE
125 RMS FINISH
CONCENTRICITY= ±.002 T.I.R.
BREAK ALL SHARP EDGES

COPYRIGHTED CAD GENERATED DRAWING. DO NOT MANUALLY UPDATE	
DRAWN BY HT	DRAWN DATE 27-05-2025
CHECKED BY	CHECKED BY
APPROVED BY	APPROVED DATE
SHEET 4 OF 4	
SCALE: 1:18	

ALLITH MANUFACTURING COMPANY	
DESCRIPTION No. 1796 Bi-parting Allith sliding fire door track system for 96" wide opening	
SIZE B	P/N 316-10-550
REV.	