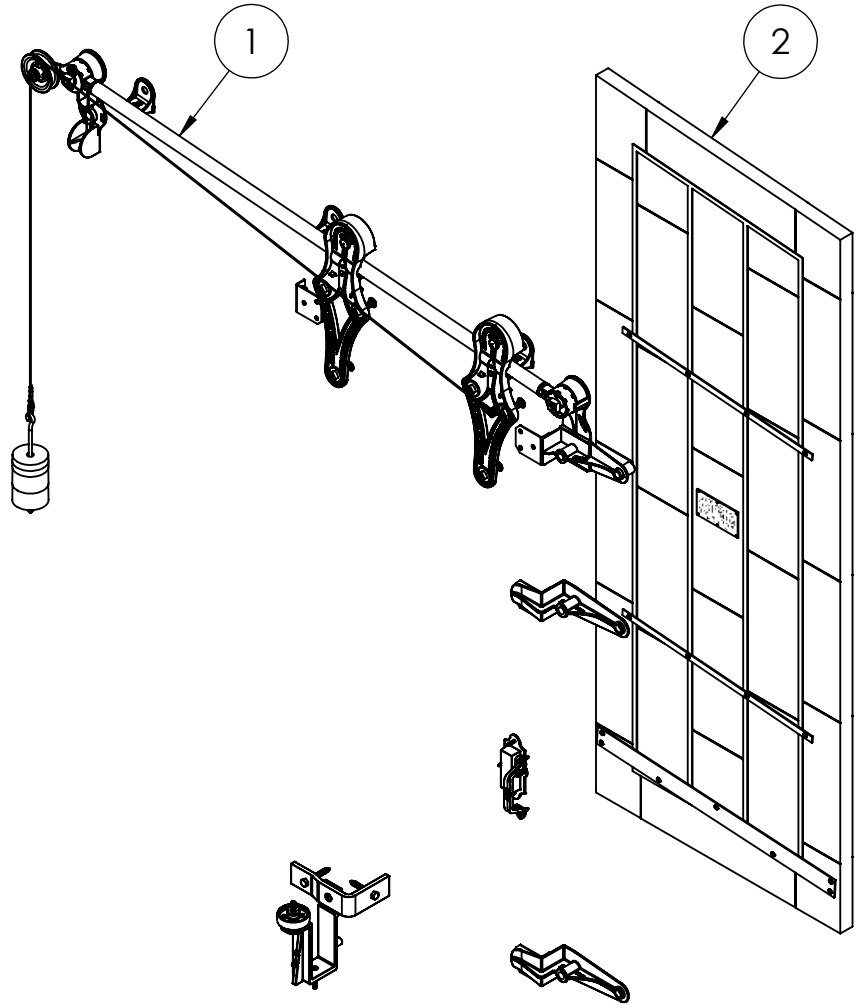
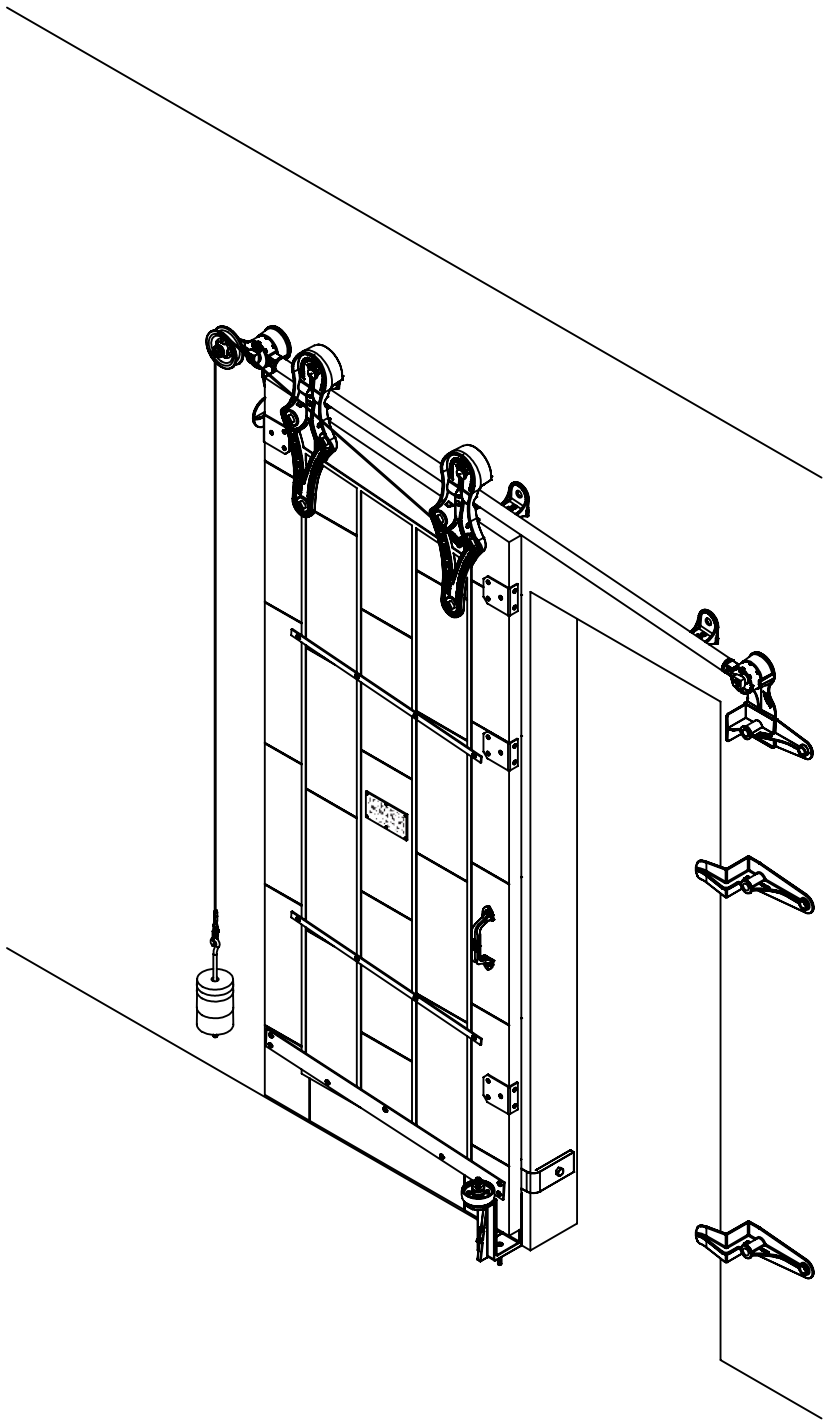


ITEM NO.	PART NUMBER	DESCRIPTION	MATERIAL	COLOR	SIZE	QTY.
1	316-10-130	No.728 Allith sliding fire door track system for 28" wide opening	Cast iron and steel	Black RAL 9005 (25-35 gloss)	0	1
2	820-20-430	Metal Clad Door for No.728 Series Hardware with Sloped Top for 28"x 84" Opening, left hand	Sheet metal	Galvalume	36" x 90" centerline x 1-3/4"	1



REV.	DESCRIPTION	DATE	BY	APPR'D

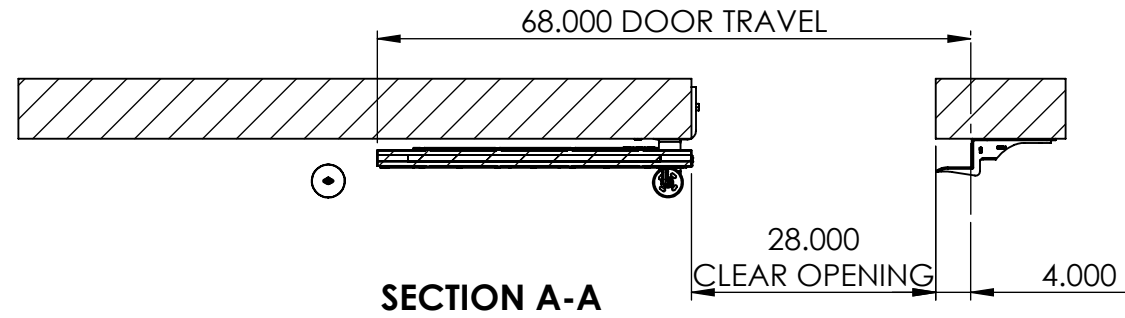
REVISION

THE INFORMATION CONTAINED IN THIS DRAWING IS THE SOLE PROPERTY OF SCOTT WILLO SOLUTION ANY REPRODUCTION IN PART OR WHOLE WITHOUT THE WRITTEN PERMISSION OF SWS IS STRICTLY PROHIBITED.

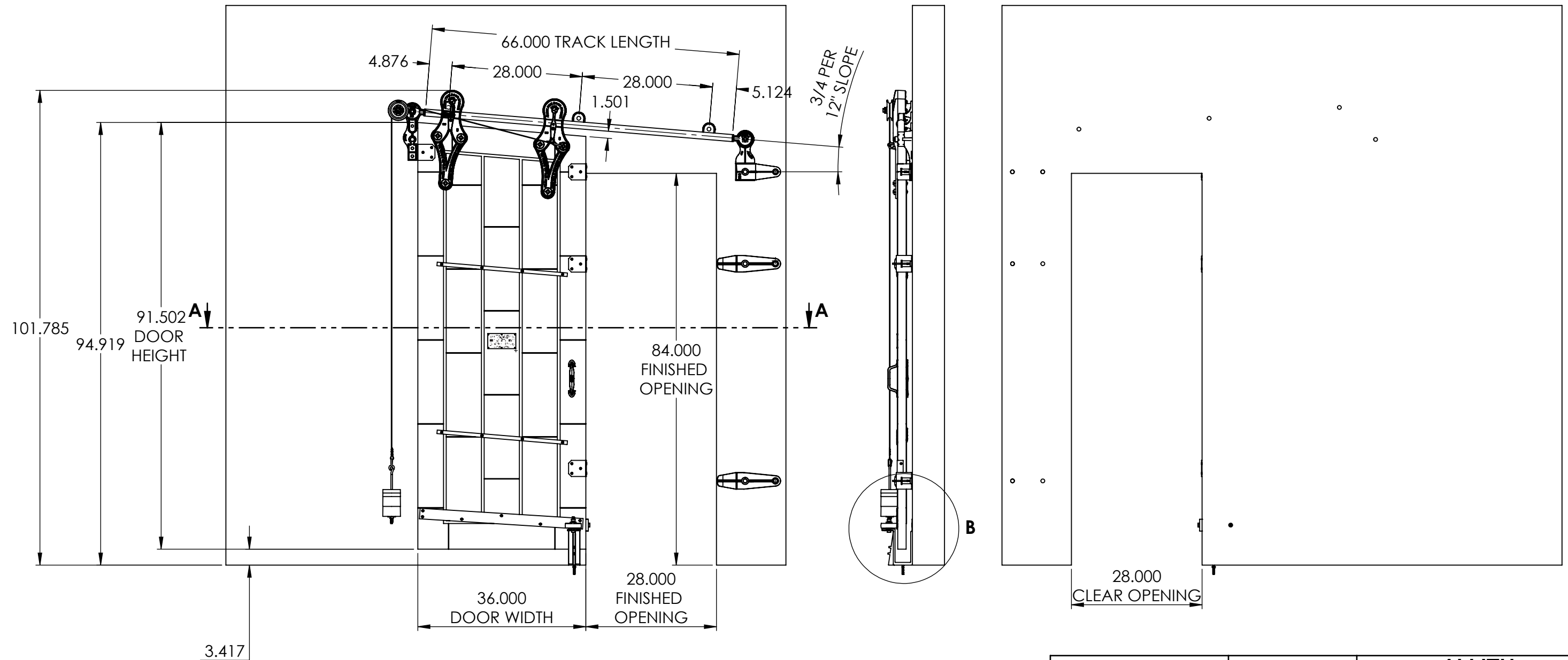
UNLESS OTHERWISE SPECIFIED
DIMENSIONS ARE IN INCHES
TOLERANCES ARE:
.X= ±.030
.XX= ±.015
.XXX= ±.005
ANGULAR= ±1°
MACHINED SURFACES TO HAVE
125 RMS FINISH
CONCENTRICITY= ±.002 T.I.R.
BREAK ALL SHARP EDGES

COPYRIGHTED CAD GENERATED DRAWING. DO NOT MANUALLY UPDATE	
DRAWN BY HT	DRAWN DATE 21-04-2025
CHECKED BY	CHECKED BY
APPROVED BY	APPROVED DATE
SHEET 1 OF 5	THIRD ANGLE PROJECTION
SCALE: 1:20	

ALLITH MANUFACTURING COMPANY	
DESCRIPTION Series 728 Allith track system with Durand's metal-clad door for 28"w x 84"h opening, left hand	
SIZE B	P/N 416-10-130
REV.	



INSIDE DOOR OPEN POSITION



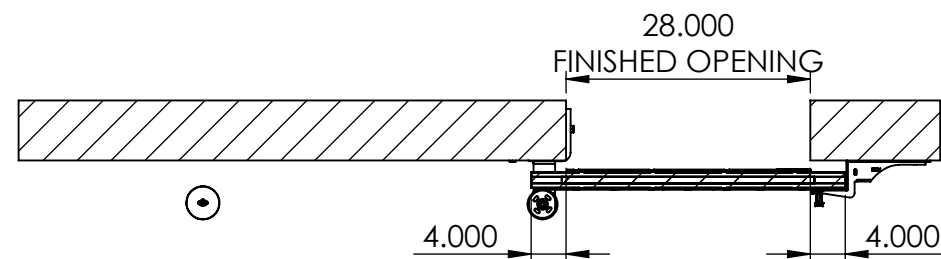
OPEN CONDITION

REV.	DESCRIPTION	DATE	BY	APPR'D
REVISION				
THE INFORMATION CONTAINED IN THIS DRAWING IS THE SOLE PROPERTY OF SCOTT WILLO SOLUTION ANY REPRODUCTION IN PART OR WHOLE WITHOUT THE WRITTEN PERMISSION OF SWS IS STRICTLY PROHIBITED.				

UNLESS OTHERWISE SPECIFIED
DIMENSIONS ARE IN INCHES
TOLERANCES ARE:
.X= $\pm .030$
.XX= $\pm .015$
.XXX= $\pm .005$
ANGULAR= $\pm 1^\circ$
MACHINED SURFACES TO HAVE
125 RMS FINISH
CONCENTRICITY= $\pm .002$ T.I.R.
BREAK ALL SHARP EDGES

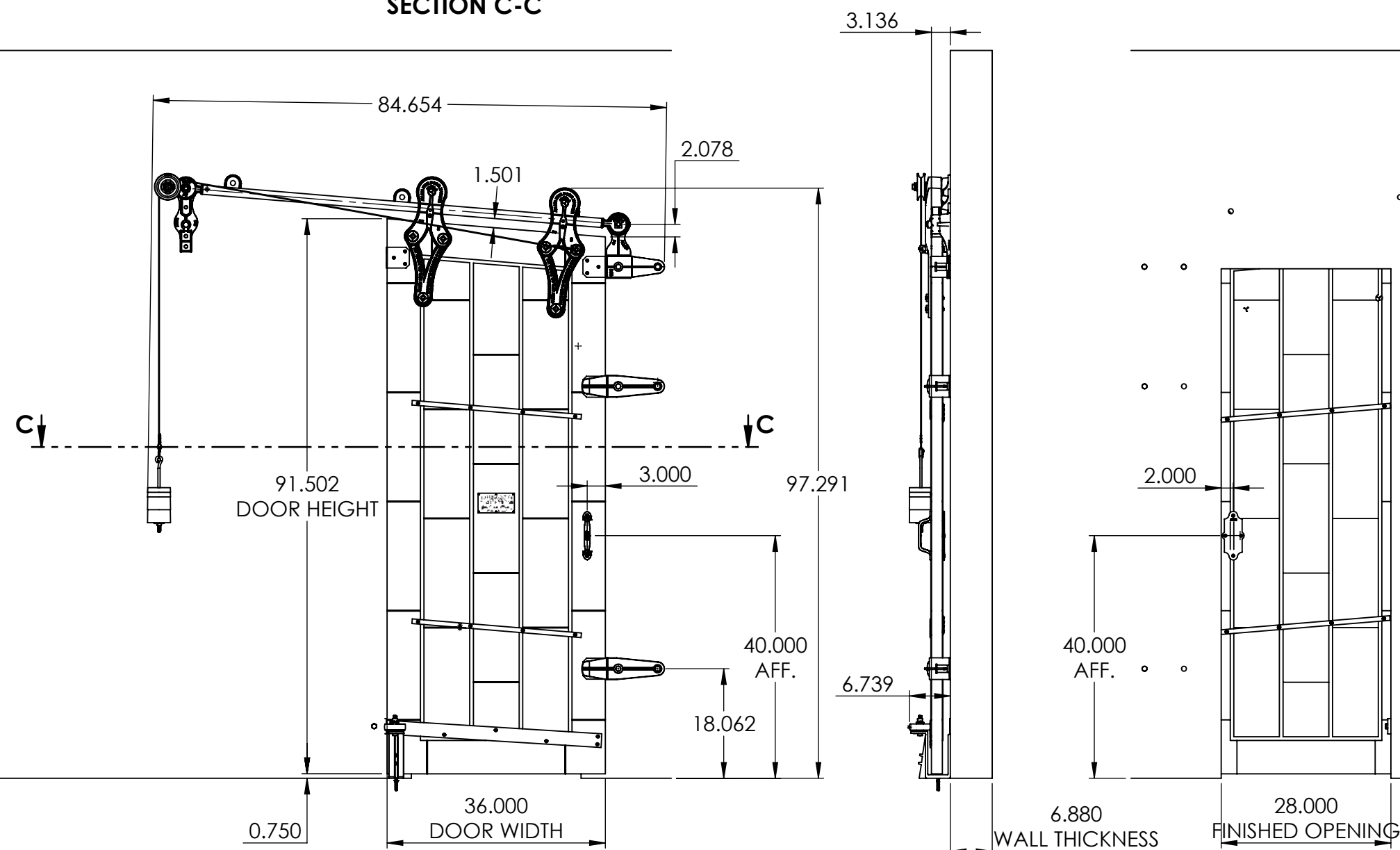
COPYRIGHTED CAD GENERATED DRAWING, DO NOT MANUALLY UPDATE	
DRAWN BY HT	DRAWN DATE 21-04-2025
CHECKED BY	CHECKED BY
APPROVED BY	APPROVED DATE
SHEET 2 OF 5	THIRD ANGLE PROJECTION
SCALE: 1:22	

ALLITH MANUFACTURING COMPANY	
DESCRIPTION Series 728 Allith track system with Durand's metal-clad door for 28"w x 84"h opening, left hand	
SIZE B	P/N 416-10-130
REV.	



SECTION C-C

INSIDE DOOR CLOSED POSITION



CLOSED CONDITION

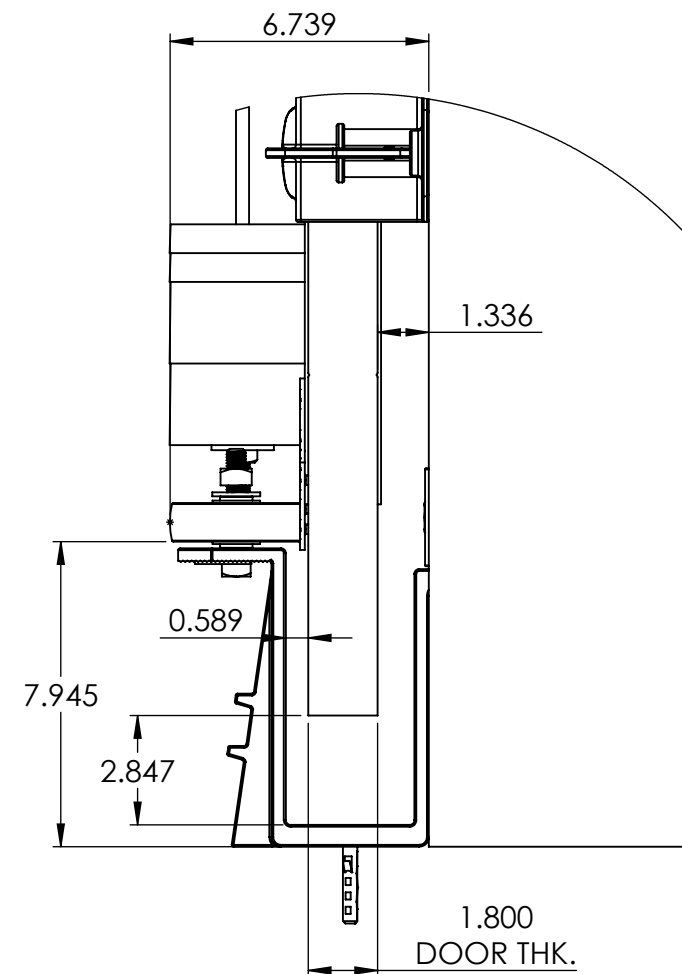
REV.	DESCRIPTION	DATE	BY	APP'D
REVISION				
THE INFORMATION CONTAINED IN THIS DRAWING IS THE SOLE PROPERTY OF SCOTT WILLO SOLUTION ANY REPRODUCTION IN PART OR WHOLE WITHOUT THE WRITTEN PERMISSION OF SWS IS STRICTLY PROHIBITED.				

UNLESS OTHERWISE SPECIFIED
DIMENSIONS ARE IN INCHES
TOLERANCES ARE:
.X= $\pm .030$
.XX= $\pm .015$
.XXX= $\pm .005$
ANGULAR= $\pm 1^\circ$
MACHINED SURFACES TO HAVE
125 RMS FINISH
CONCENTRICITY= $\pm .002$ T.I.R.
BREAK ALL SHARP EDGES

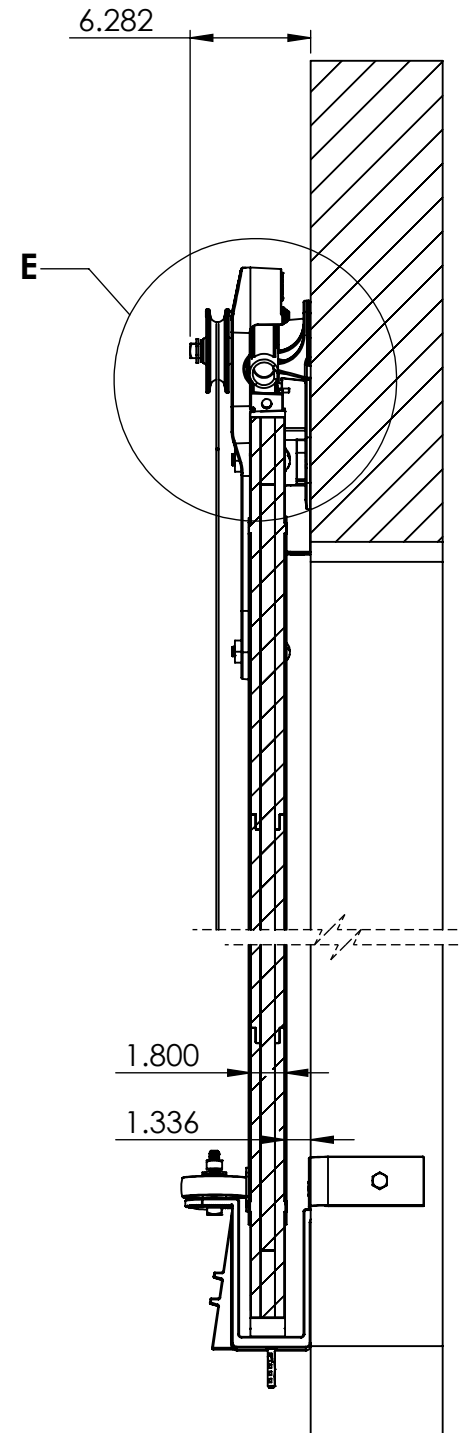
COPYRIGHTED CAD GENERATED DRAWING. DO NOT MANUALLY UPDATE	
DRAWN BY HT	DRAWN DATE 21-04-2025
CHECKED BY	CHECKED BY
APPROVED BY	APPROVED DATE
SHEET 3 OF 5	THIRD ANGLE PROJECTION
SCALE: 1:22	

**ALLITH
MANUFACTURING
COMPANY**

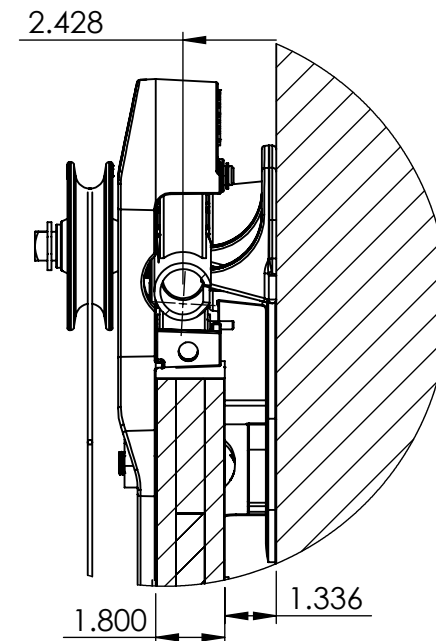
DESCRIPTION Series 728 Allith track system with Durand's metal-clad door for 28"w x 84"h opening, left hand	
SIZE B	P/N 416-10-130
REV.	



DETAIL B
SCALE 1 : 5



SECTION D-D
SCALE 1 : 10



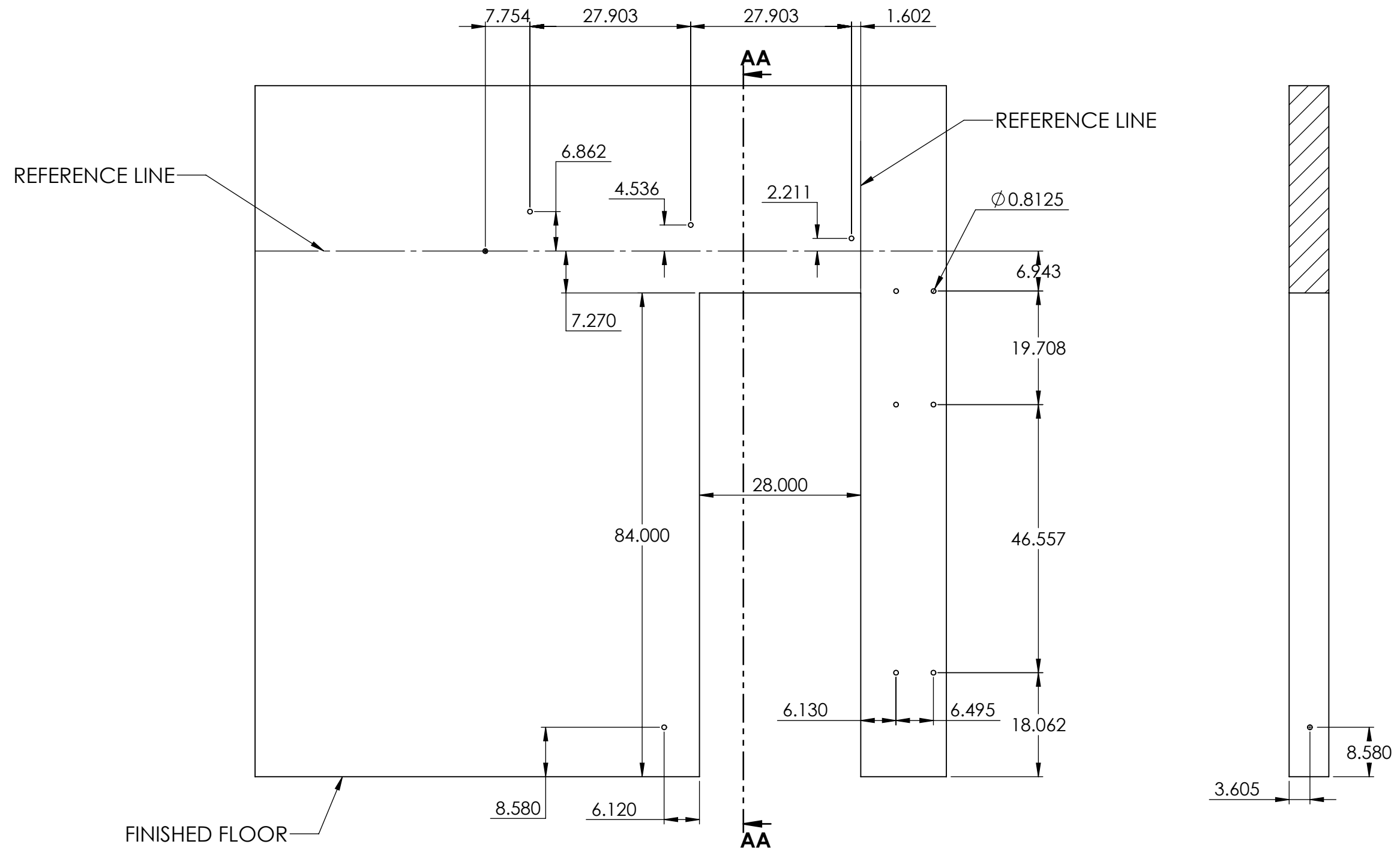
DETAIL E
SCALE 1 : 5

REV.	DESCRIPTION	DATE	BY	APPR'D
REVISION				
THE INFORMATION CONTAINED IN THIS DRAWING IS THE SOLE PROPERTY OF SCOTT WILLO SOLUTION ANY REPRODUCTION IN PART OR WHOLE WITHOUT THE WRITTEN PERMISSION OF SWS IS STRICTLY PROHIBITED.				

UNLESS OTHERWISE SPECIFIED
DIMENSIONS ARE IN INCHES
TOLERANCES ARE:
.X= $\pm .030$
.XX= $\pm .015$
.XXX= $\pm .005$
ANGULAR= $\pm 1^\circ$
MACHINED SURFACES TO HAVE
125 RMS FINISH
CONCENTRICITY= $\pm .002$ T.I.R.
BREAK ALL SHARP EDGES

COPYRIGHTED CAD GENERATED DRAWING, DO NOT MANUALLY UPDATE	
DRAWN BY HT	DRAWN DATE 21-04-2025
CHECKED BY	CHECKED BY
APPROVED BY	APPROVED DATE
SHEET 4 OF 5	THIRD ANGLE PROJECTION
SCALE: 1:22	

ALLITH MANUFACTURING COMPANY	
DESCRIPTION Series 728 Allith track system with Durand's metal-clad door for 28"w x 84"h opening, left hand	
SIZE B	P/N 416-10-130
REV.	



SECTION AA-AA
SCALE 1 : 20

WALL PENETRATION HOLE CENTERS

REV.	DESCRIPTION	DATE	BY	APPR'D
REVISION				
THE INFORMATION CONTAINED IN THIS DRAWING IS THE SOLE PROPERTY OF SCOTT WILLO SOLUTION ANY REPRODUCTION IN PART OR WHOLE WITHOUT THE WRITTEN PERMISSION OF SWS IS STRICTLY PROHIBITED.				

UNLESS OTHERWISE SPECIFIED
DIMENSIONS ARE IN INCHES
TOLERANCES ARE:
.X= $\pm .030$
.XX= $\pm .015$
.XXX= $\pm .005$
ANGULAR= $\pm 1^\circ$
MACHINED SURFACES TO HAVE
125 RMS FINISH
CONCENTRICITY= $\pm .002$ T.I.R.
BREAK ALL SHARP EDGES

COPYRIGHTED CAD GENERATED DRAWING, DO NOT MANUALLY UPDATE	
DRAWN BY HT	DRAWN DATE 21-04-2025
CHECKED BY	CHECKED BY
APPROVED BY	APPROVED DATE
SHEET 5 OF 5	THIRD ANGLE PROJECTION
SCALE: 1:50	

**ALLITH
MANUFACTURING
COMPANY**

DESCRIPTION
Series 728 Allith track system with Durand's metal-clad door for
28"w x 84"h opening, left hand

SIZE P/N
B 416-10-130

REV.