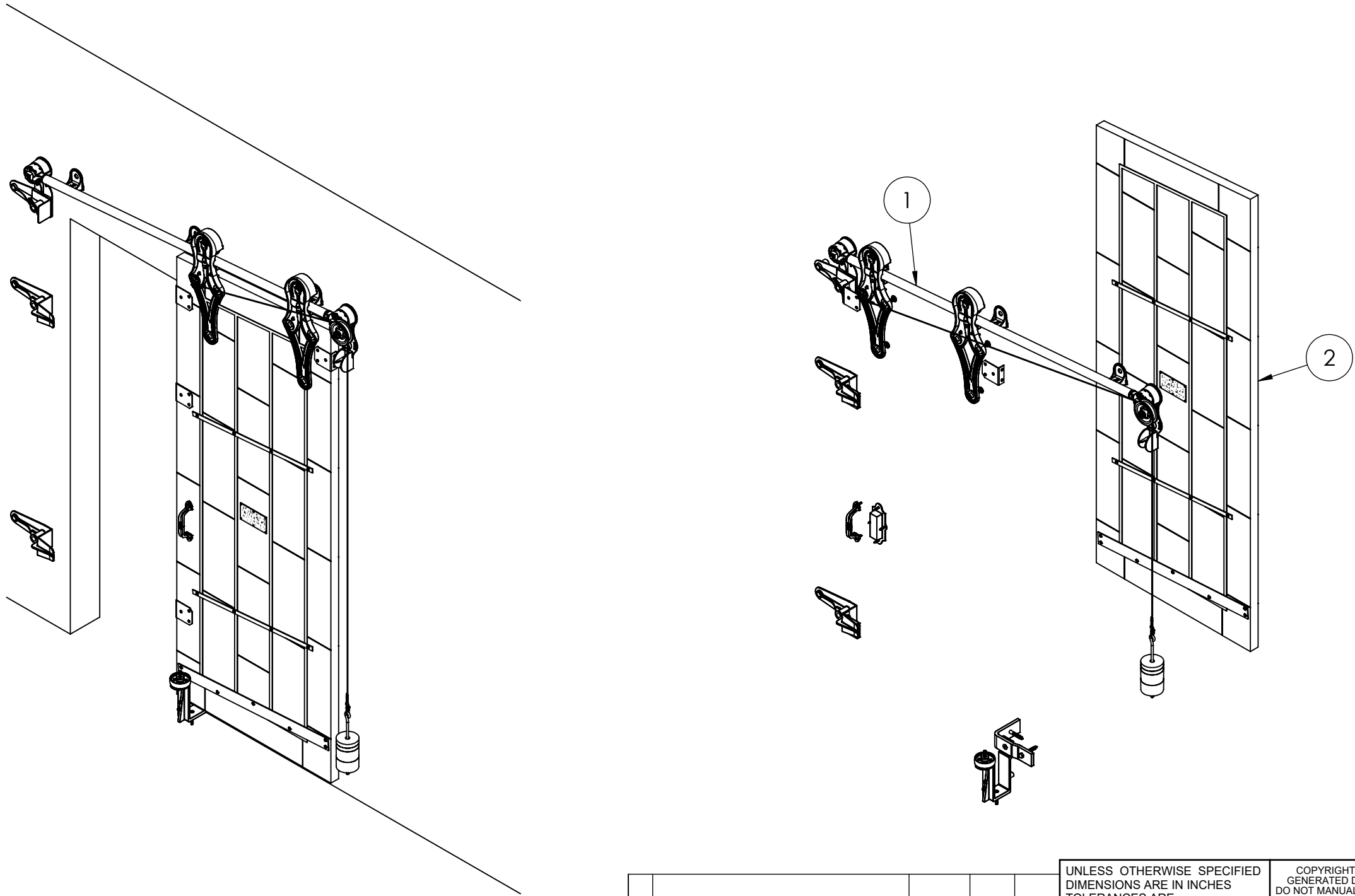


ITEM NO.	PART NUMBER	DESCRIPTION	MATERIAL	COLOR	SIZE	QTY.
1	316-10-130	No.728 Allith sliding fire door track system for 28" wide opening	Cast iron and steel	Black RAL 9005 (25-35 gloss)	0	1
2	820-20-432	Metal Clad Door for No.728 Series Hardware with Sloped Top for 28"x 84" Opening, right hand	Sheet metal	Galvalume	36" x 90" centerline x 1-3/4"	1

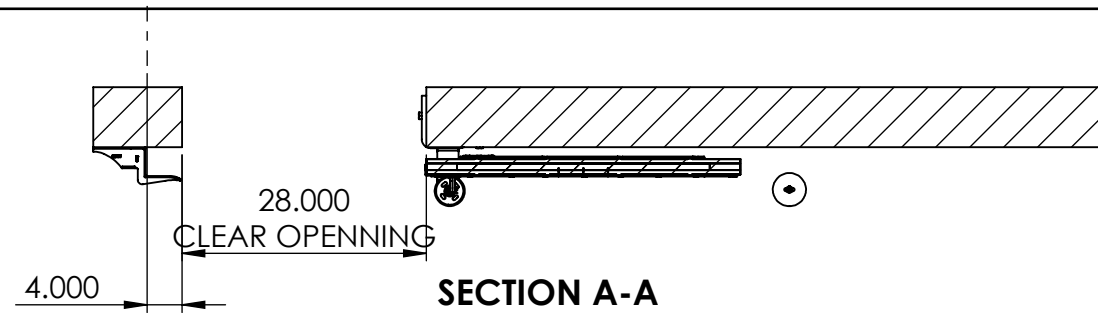


REV.	DESCRIPTION	DATE	BY	APPR'D
REVISION				
THE INFORMATION CONTAINED IN THIS DRAWING IS THE SOLE PROPERTY OF SCOTT WILLO SOLUTION ANY REPRODUCTION IN PART OR WHOLE WITHOUT THE WRITTEN PERMISSION OF SWS IS STRICTLY PROHIBITED.				

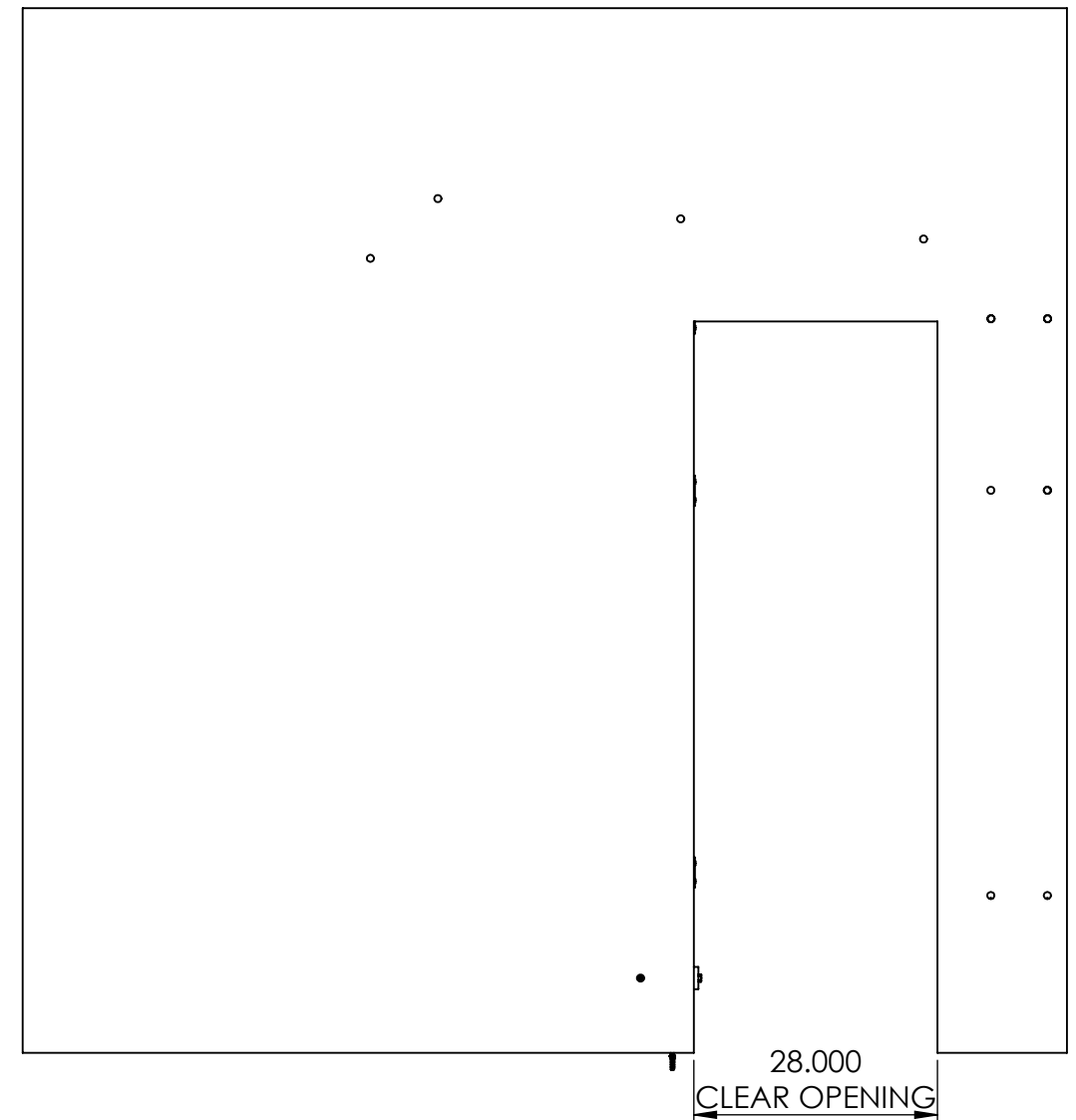
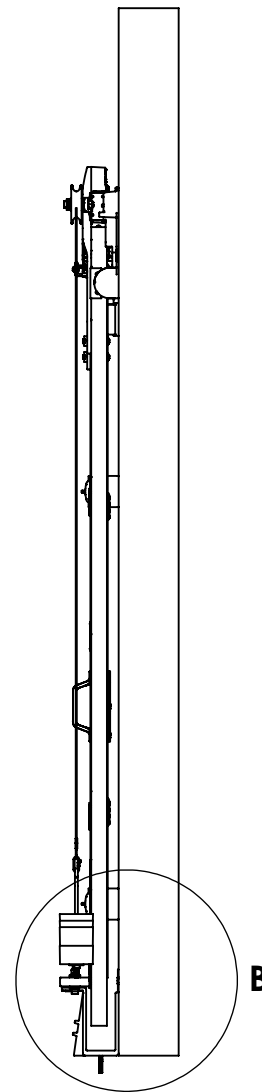
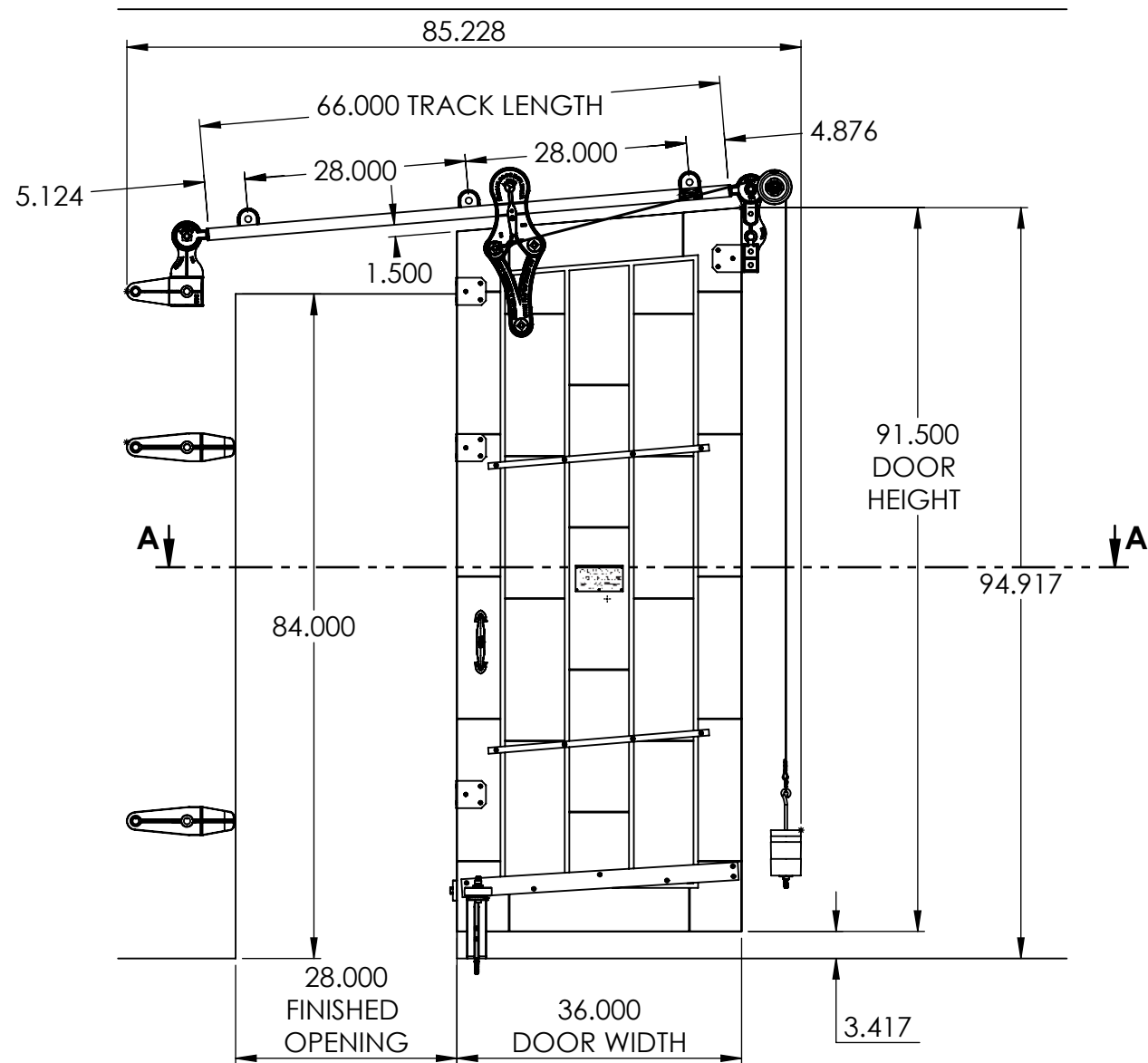
UNLESS OTHERWISE SPECIFIED  
DIMENSIONS ARE IN INCHES  
TOLERANCES ARE:  
.X= ±.030  
.XX= ±.015  
.XXX= ±.005  
ANGULAR= ±1°  
MACHINED SURFACES TO HAVE  
125 RMS FINISH  
CONCENTRICITY= ±.002 T.I.R.  
BREAK ALL SHARP EDGES

COPYRIGHTED CAD GENERATED DRAWING, DO NOT MANUALLY UPDATE	
DRAWN BY HT	DRAWN DATE 23-04-2025
CHECKED BY	CHECKED BY
APPROVED BY	APPROVED DATE
SHEET 1 OF 5	THIRD ANGLE PROJECTION
SCALE: 1:20	

ALLITH MANUFACTURING COMPANY	
DESCRIPTION Series 728 Allith track system with Durand's metal-clad door for 28"w x 84"h opening, right hand	
SIZE B	P/N 416-10-132
REV.	



## INSIDE DOOR OPEN POSITION



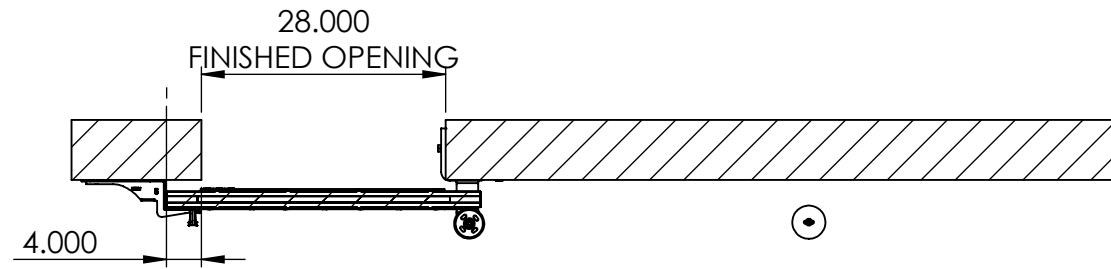
## OPEN CONDITION

REV.	DESCRIPTION	DATE	BY	APPR'D
<b>REVISION</b>				
THE INFORMATION CONTAINED IN THIS DRAWING IS THE SOLE PROPERTY OF SCOTT WILLO SOLUTION ANY REPRODUCTION IN PART OR WHOLE WITHOUT THE WRITTEN PERMISSION OF SWS IS STRICTLY PROHIBITED.				

UNLESS OTHERWISE SPECIFIED  
DIMENSIONS ARE IN INCHES  
TOLERANCES ARE:  
.X=  $\pm .030$   
.XX=  $\pm .015$   
.XXX=  $\pm .005$   
ANGULAR=  $\pm 1^\circ$   
MACHINED SURFACES TO HAVE  
125 RMS FINISH  
CONCENTRICITY=  $\pm .002$  T.I.R.  
BREAK ALL SHARP EDGES

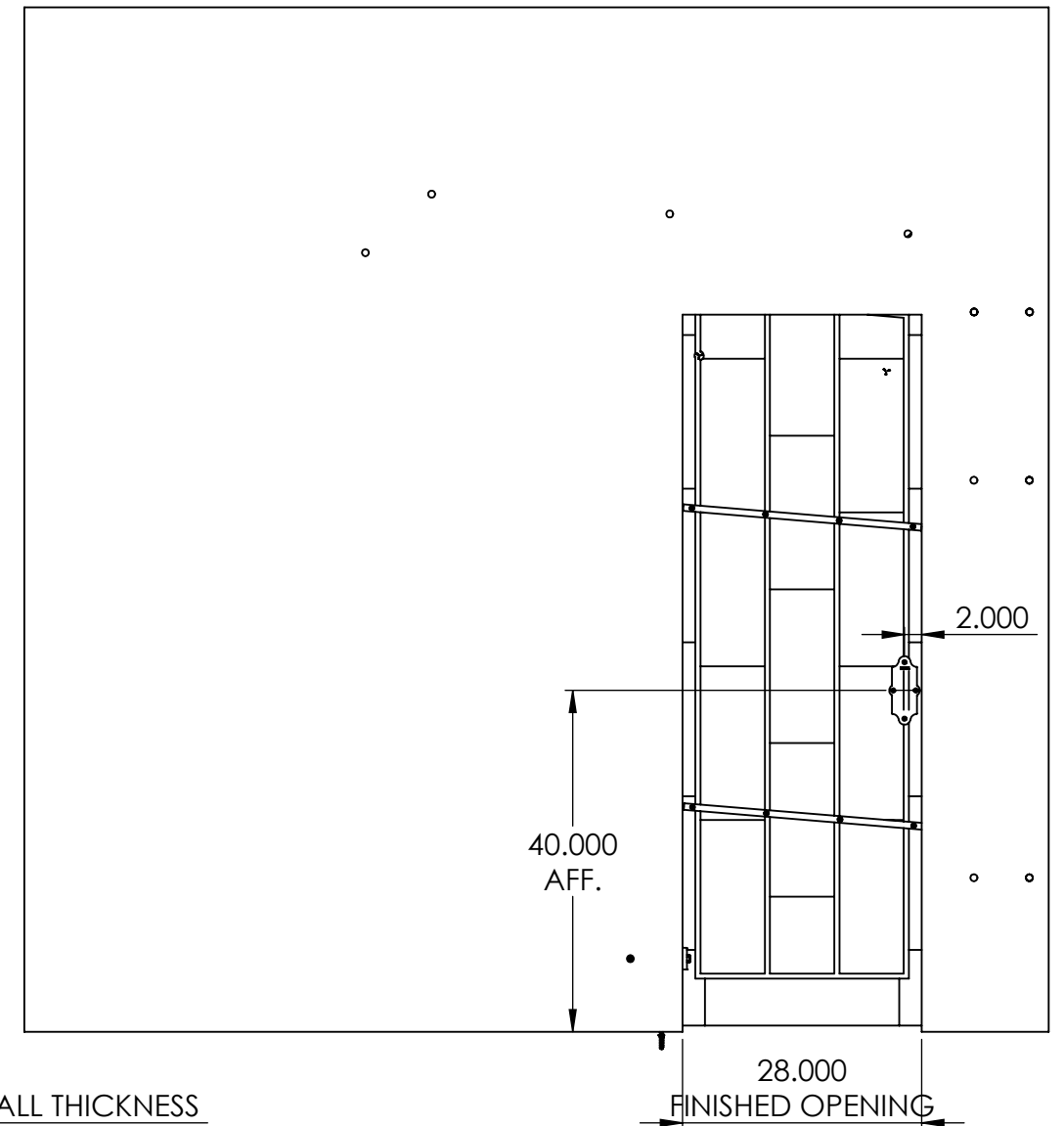
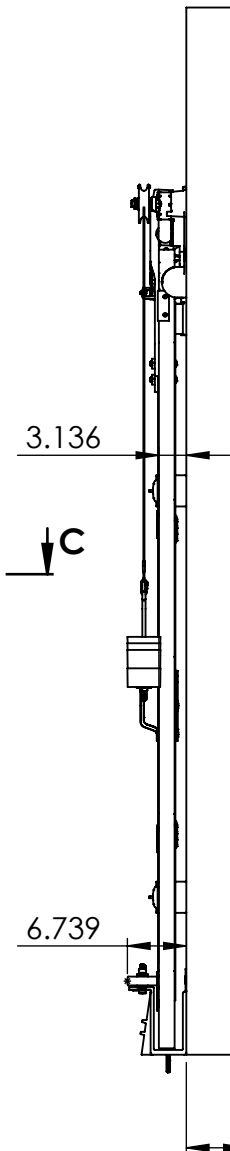
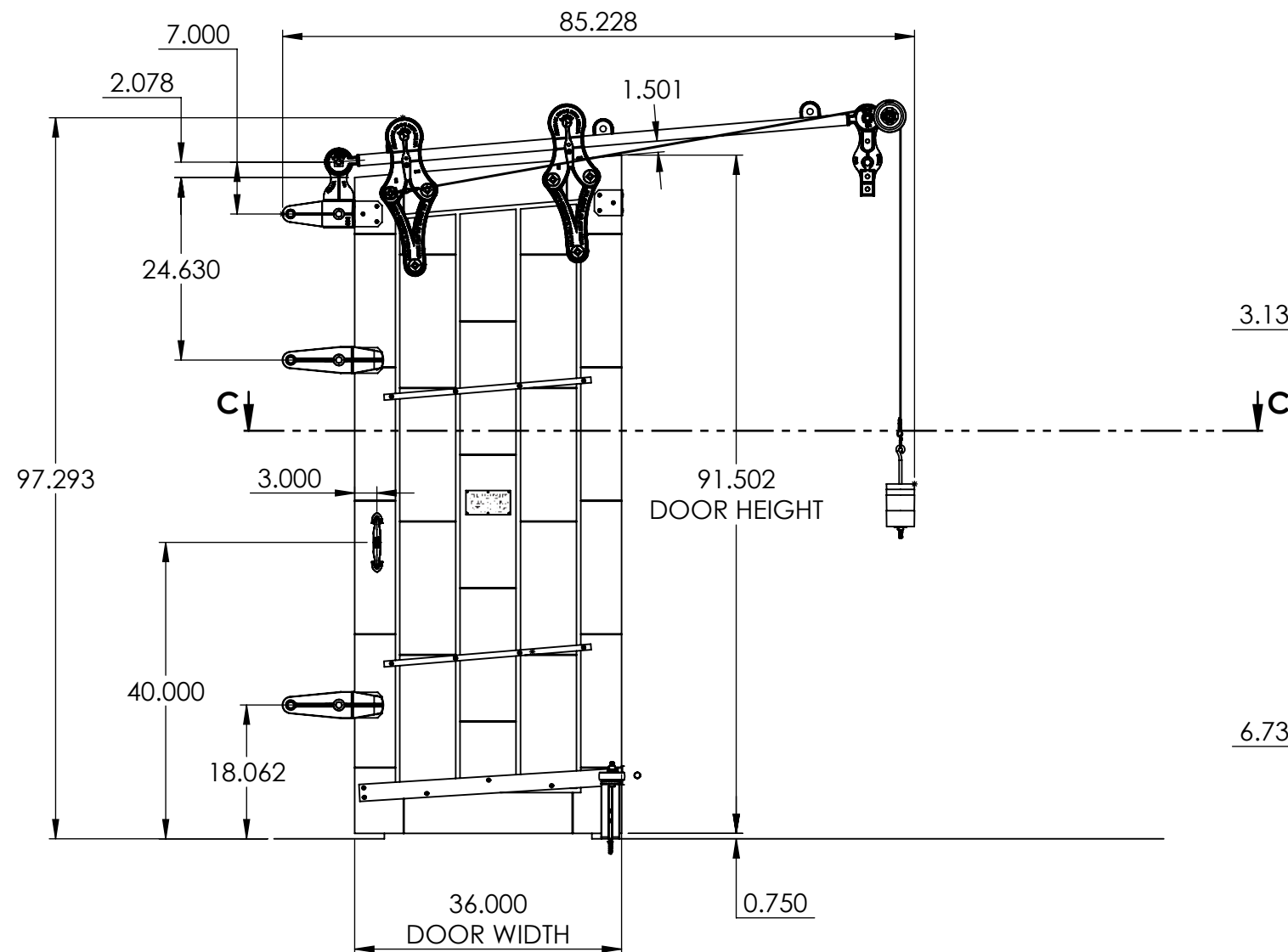
COPYRIGHTED CAD GENERATED DRAWING. DO NOT MANUALLY UPDATE	
DRAWN BY HT	DRAWN DATE 23-04-2025
CHECKED BY	CHECKED BY
APPROVED BY	APPROVED DATE
SHEET 2 OF 5	THIRD ANGLE PROJECTION
SCALE: 1:22	

<b>ALLITH MANUFACTURING COMPANY</b>	
DESCRIPTION Series 728 Allith track system with Durand's metal-clad door for 28"w x 84"h opening, right hand	
SIZE <b>B</b>	P/N <b>416-10-132</b>
REV.	



SECTION C-C

INSIDE DOOR CLOSED POSITION



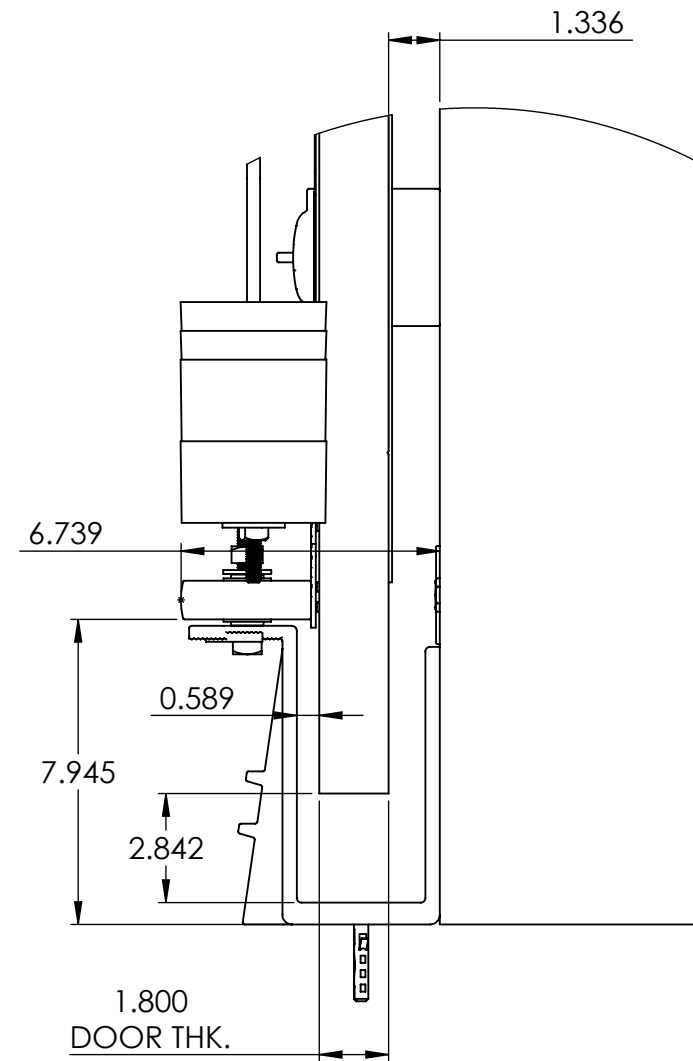
CLOSED CONDITION

REV.	DESCRIPTION	DATE	BY	APPR'D
REVISION				
THE INFORMATION CONTAINED IN THIS DRAWING IS THE SOLE PROPERTY OF SCOTT WILLO SOLUTION ANY REPRODUCTION IN PART OR WHOLE WITHOUT THE WRITTEN PERMISSION OF SWS IS STRICTLY PROHIBITED.				

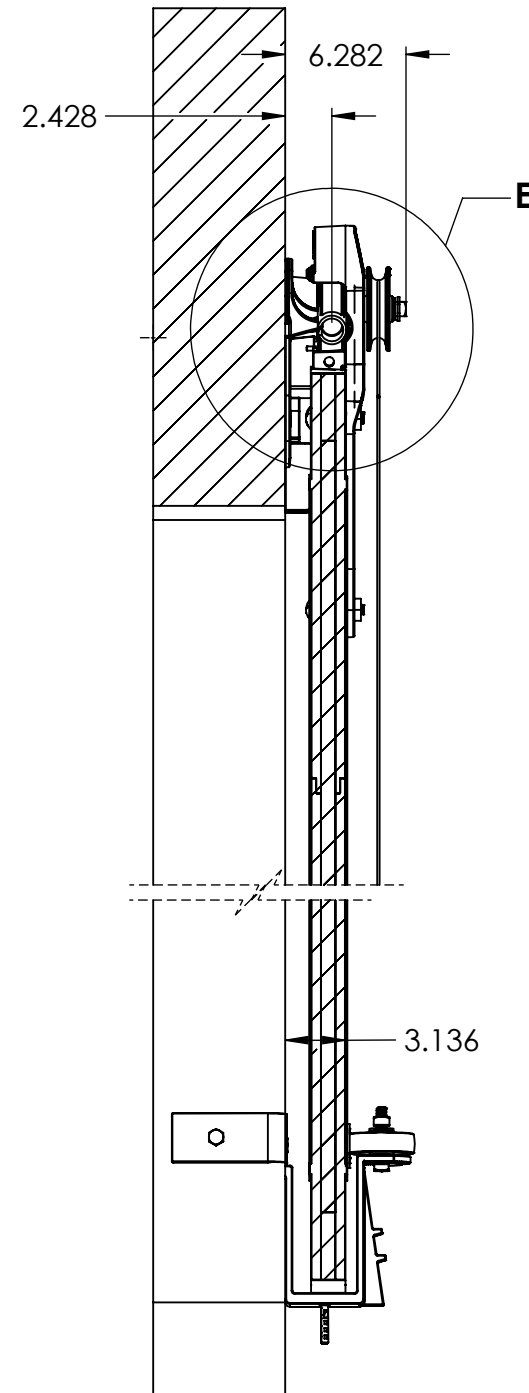
UNLESS OTHERWISE SPECIFIED  
DIMENSIONS ARE IN INCHES  
TOLERANCES ARE:  
.X=  $\pm .030$   
.XX=  $\pm .015$   
.XXX=  $\pm .005$   
ANGULAR=  $\pm 1^\circ$   
MACHINED SURFACES TO HAVE  
125 RMS FINISH  
CONCENTRICITY=  $\pm .002$  T.I.R.  
BREAK ALL SHARP EDGES

COPYRIGHTED CAD GENERATED DRAWING, DO NOT MANUALLY UPDATE	
DRAWN BY HT	DRAWN DATE 23-04-2025
CHECKED BY	CHECKED BY
APPROVED BY	APPROVED DATE
SHEET 3 OF 5	THIRD ANGLE PROJECTION
SCALE: 1:22	

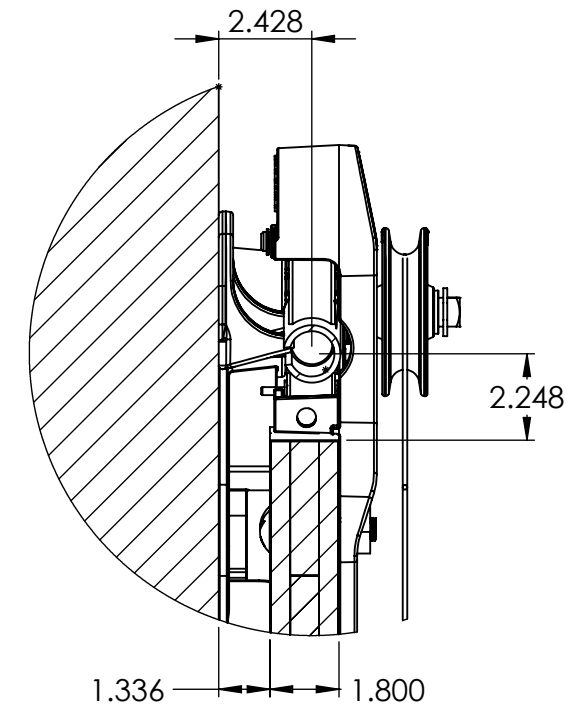
ALLITH MANUFACTURING COMPANY	
DESCRIPTION Series 728 Allith track system with Durand's metal-clad door for 28"w x 84"h opening, right hand	
SIZE B	P/N 416-10-132
REV.	



**DETAIL B**  
**SCALE 1 : 5**



**SECTION D-D**  
**SCALE 1 : 10**



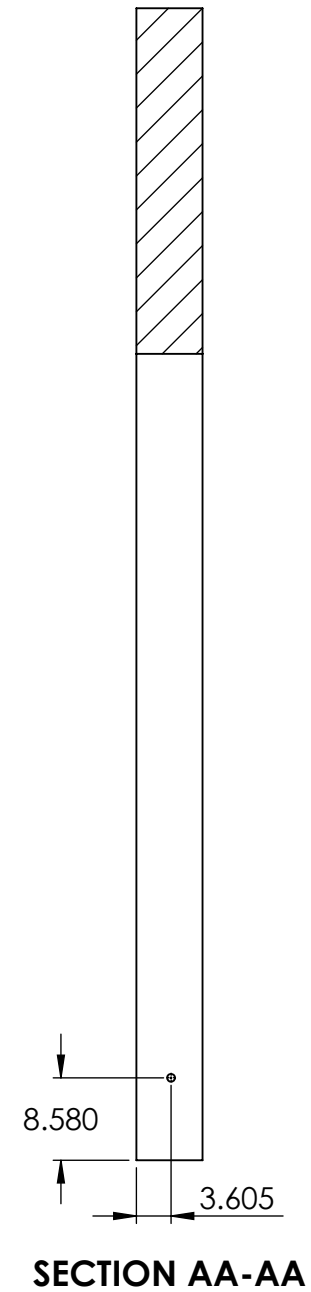
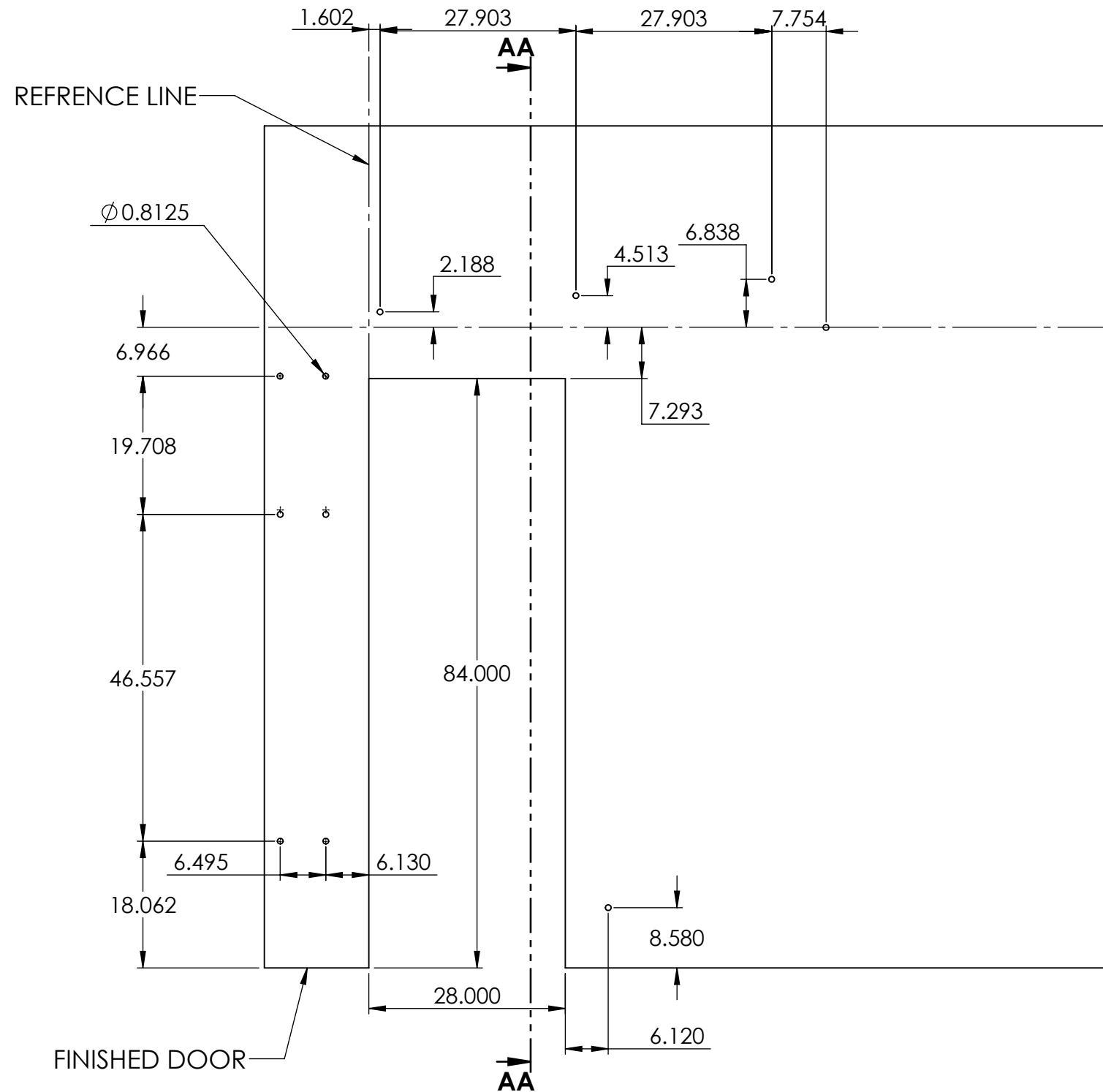
**DETAIL E**  
**SCALE 1 : 5**

REV.	DESCRIPTION	DATE	BY	APPR'D
<b>REVISION</b>				
THE INFORMATION CONTAINED IN THIS DRAWING IS THE SOLE PROPERTY OF SCOTT WILLO SOLUTION ANY REPRODUCTION IN PART OR WHOLE WITHOUT THE WRITTEN PERMISSION OF SWS IS STRICTLY PROHIBITED.				

UNLESS OTHERWISE SPECIFIED  
DIMENSIONS ARE IN INCHES  
TOLERANCES ARE:  
.X=  $\pm 0.030$   
.XX=  $\pm 0.015$   
.XXX=  $\pm 0.005$   
ANGULAR=  $\pm 1^\circ$   
MACHINED SURFACES TO HAVE  
125 RMS FINISH  
CONCENTRICITY=  $\pm 0.002$  T.I.R.  
BREAK ALL SHARP EDGES

COPYRIGHTED CAD GENERATED DRAWING, DO NOT MANUALLY UPDATE	
DRAWN BY HT	DRAWN DATE 23-04-2025
CHECKED BY	CHECKED BY
APPROVED BY	APPROVED DATE
SHEET 4 OF 5	THIRD ANGLE PROJECTION
SCALE: 1:22	

<b>ALLITH MANUFACTURING COMPANY</b>	
DESCRIPTION Series 728 Allith track system with Durand's metal-clad door for 28"w x 84"h opening, right hand	
SIZE <b>B</b>	P/N <b>416-10-132</b>
REV.	



## WALL PENETRATION HOLE CENTERS

REV.	DESCRIPTION	DATE	BY	APPR'D
REVISION				
THE INFORMATION CONTAINED IN THIS DRAWING IS THE SOLE PROPERTY OF SCOTT WILLO SOLUTION ANY REPRODUCTION IN PART OR WHOLE WITHOUT THE WRITTEN PERMISSION OF SWS IS STRICTLY PROHIBITED.				

UNLESS OTHERWISE SPECIFIED  
DIMENSIONS ARE IN INCHES  
TOLERANCES ARE:  
.X= ±.030  
.XX= ±.015  
.XXX= ±.005  
ANGULAR= ±1°  
MACHINED SURFACES TO HAVE  
125 RMS FINISH  
CONCENTRICITY= ±.002 T.I.R.  
BREAK ALL SHARP EDGES

COPYRIGHTED CAD GENERATED DRAWING, DO NOT MANUALLY UPDATE	
DRAWN BY HT	DRAWN DATE 23-04-2025
CHECKED BY	CHECKED BY
APPROVED BY	APPROVED DATE
SHEET 5 OF 5	THIRD ANGLE PROJECTION
SCALE: 1:20	

ALLITH MANUFACTURING COMPANY	
DESCRIPTION Series 728 Allith track system with Durand's metal-clad door for 28"w x 84"h opening, right hand	
SIZE B	P/N 416-10-132
REV.	