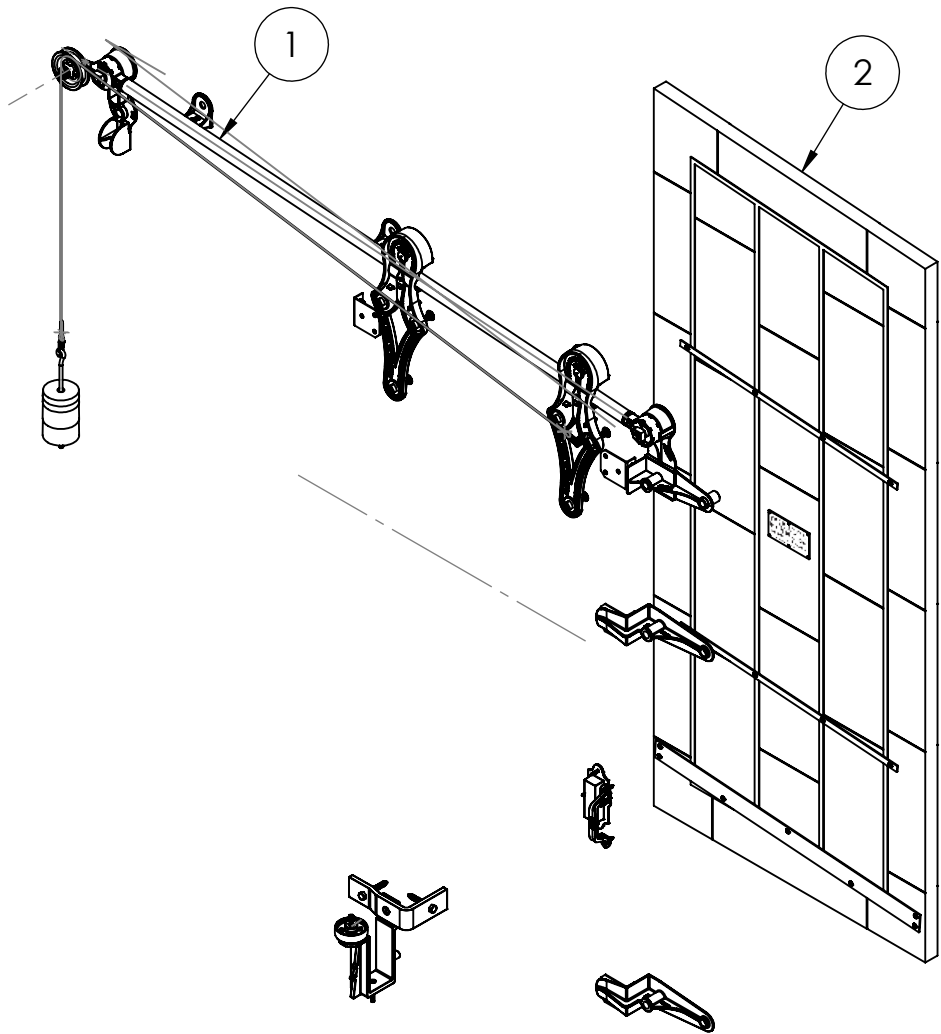
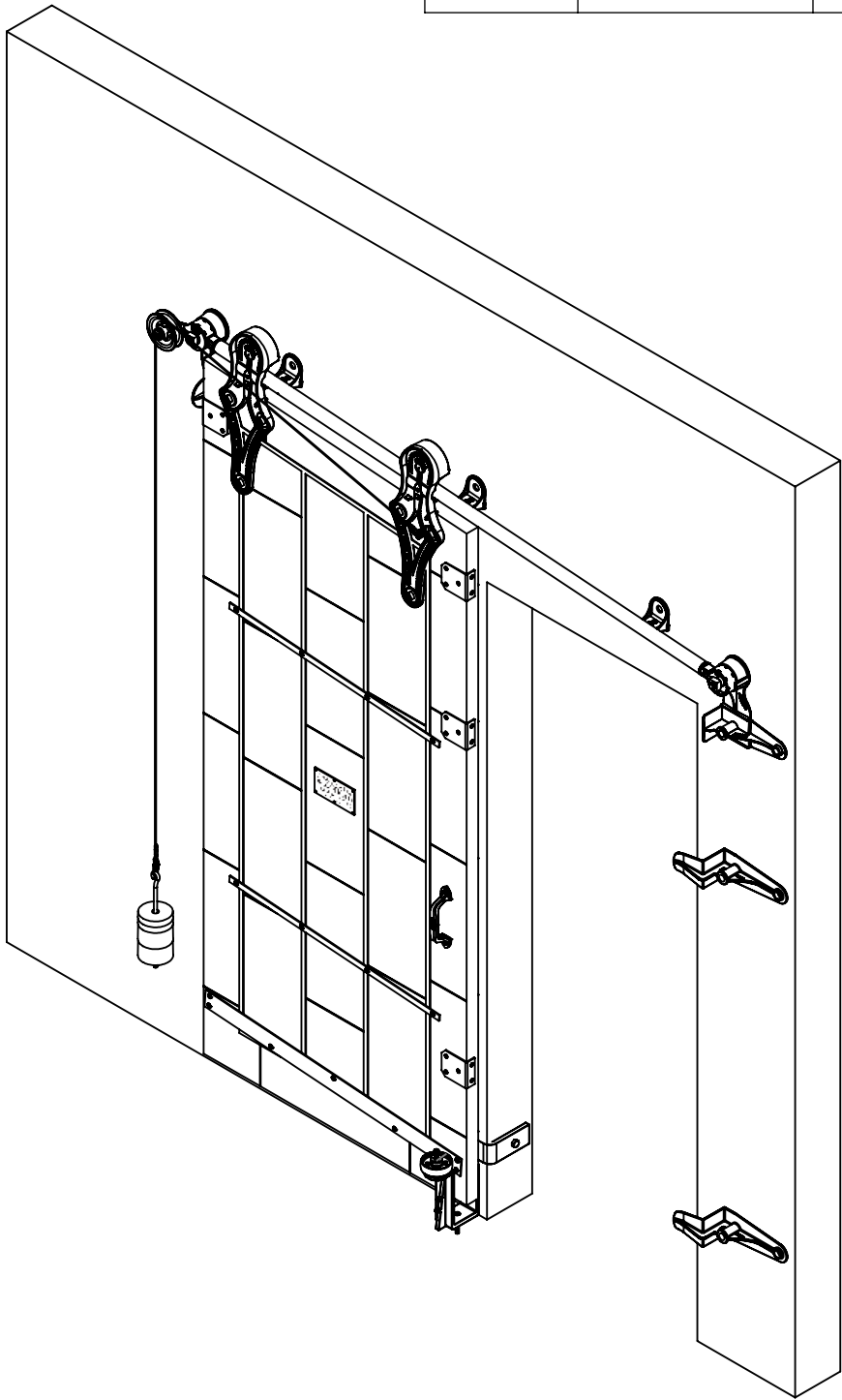


ITEM NO.	PART NUMBER	DESCRIPTION	MATERIAL	COLOR	SIZE	QTY.
1	316-10-150	No.732 Allith sliding fire door track system for 32" wide opening	Cast iron and steel	Black RAL 9005 (25-35 gloss)	0	1
2	820-20-440	Metal Clad Door for No.732 Series Hardware with Sloped Top for 32" x 84" Opening, left hand	Sheet metal	Galvalume	40" x 90" centerline x 1-3/4"	1



REV.	DESCRIPTION	DATE	BY	APPR'D

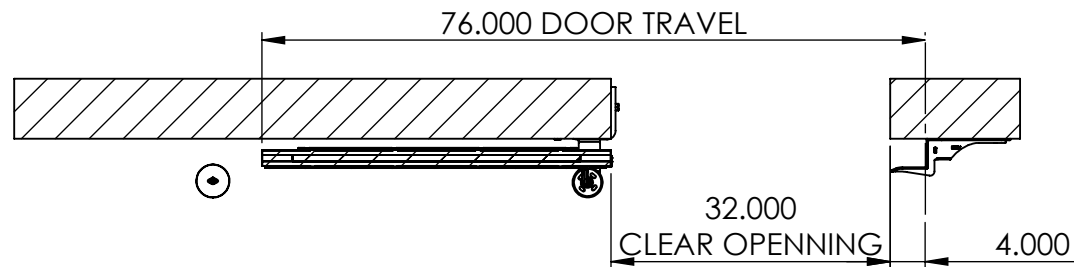
**REVISION**

THE INFORMATION CONTAINED IN THIS DRAWING IS THE SOLE PROPERTY OF SCOTT WILLO SOLUTION ANY REPRODUCTION IN PART OR WHOLE WITHOUT THE WRITTEN PERMISSION OF SWS IS STRICTLY PROHIBITED.

UNLESS OTHERWISE SPECIFIED  
DIMENSIONS ARE IN INCHES  
TOLERANCES ARE:  
.X= ±.030  
.XX= ±.015  
.XXX= ±.005  
ANGULAR= ±1°  
MACHINED SURFACES TO HAVE  
125 RMS FINISH  
CONCENTRICITY= ±.002 T.I.R.  
BREAK ALL SHARP EDGES

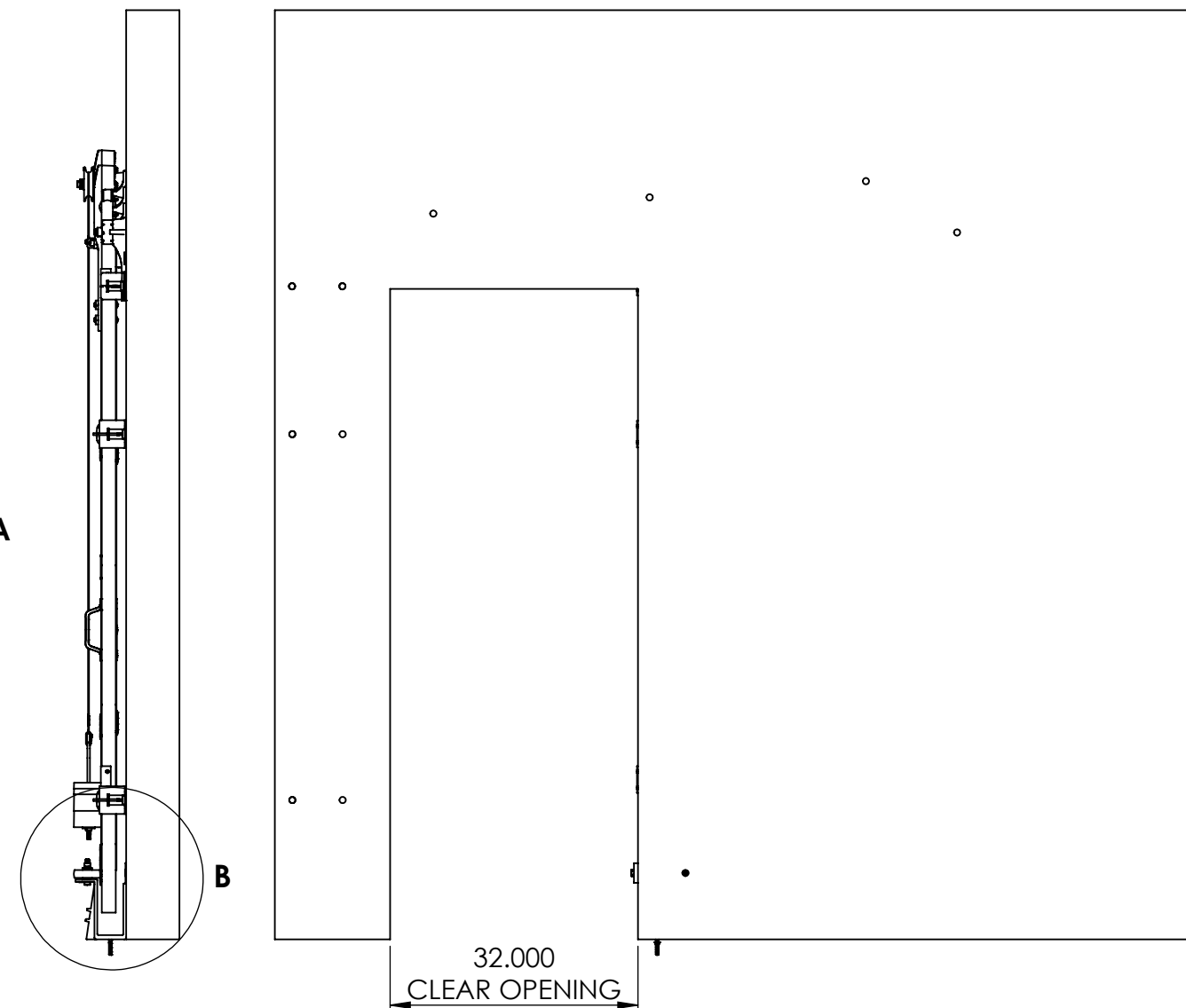
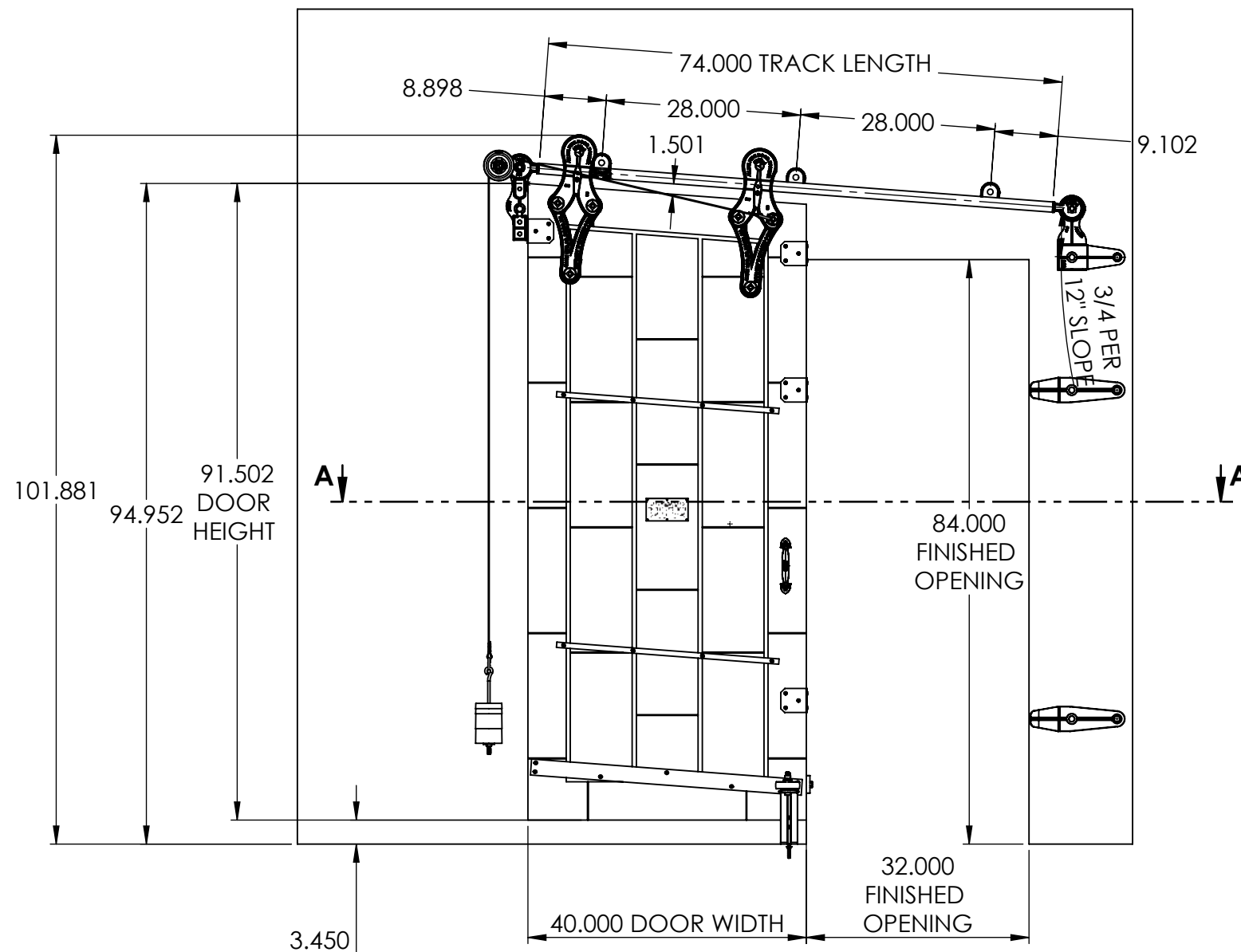
COPYRIGHTED CAD GENERATED DRAWING. DO NOT MANUALLY UPDATE	
DRAWN BY HT	DRAWN DATE 23-04-2025
CHECKED BY	CHECKED BY
APPROVED BY	APPROVED DATE
SHEET 1 OF 5	THIRD ANGLE PROJECTION
SCALE: 1:20	

<b>ALLITH MANUFACTURING COMPANY</b>	
DESCRIPTION Series 732 Allith track system with Durand's metal-clad door for 32"w x 84"h opening, left hand	
SIZE B	P/N <b>416-10-150</b>
REV.	



SECTION A-A

INSIDE DOOR OPEN POSITION



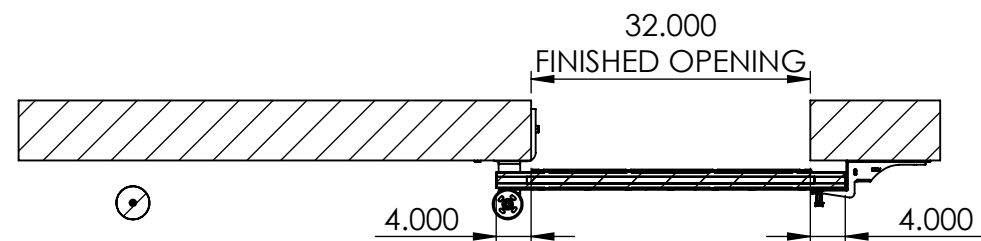
OPEN CONDITION

REV.	DESCRIPTION	DATE	BY	APPR'D
REVISION				
THE INFORMATION CONTAINED IN THIS DRAWING IS THE SOLE PROPERTY OF SCOTT WILLO SOLUTION ANY REPRODUCTION IN PART OR WHOLE WITHOUT THE WRITTEN PERMISSION OF SWS IS STRICTLY PROHIBITED.				

UNLESS OTHERWISE SPECIFIED  
DIMENSIONS ARE IN INCHES  
TOLERANCES ARE:  
.X=  $\pm .030$   
.XX=  $\pm .015$   
.XXX=  $\pm .005$   
ANGULAR=  $\pm 1^\circ$   
MACHINED SURFACES TO HAVE  
125 RMS FINISH  
CONCENTRICITY=  $\pm .002$  T.I.R.  
BREAK ALL SHARP EDGES

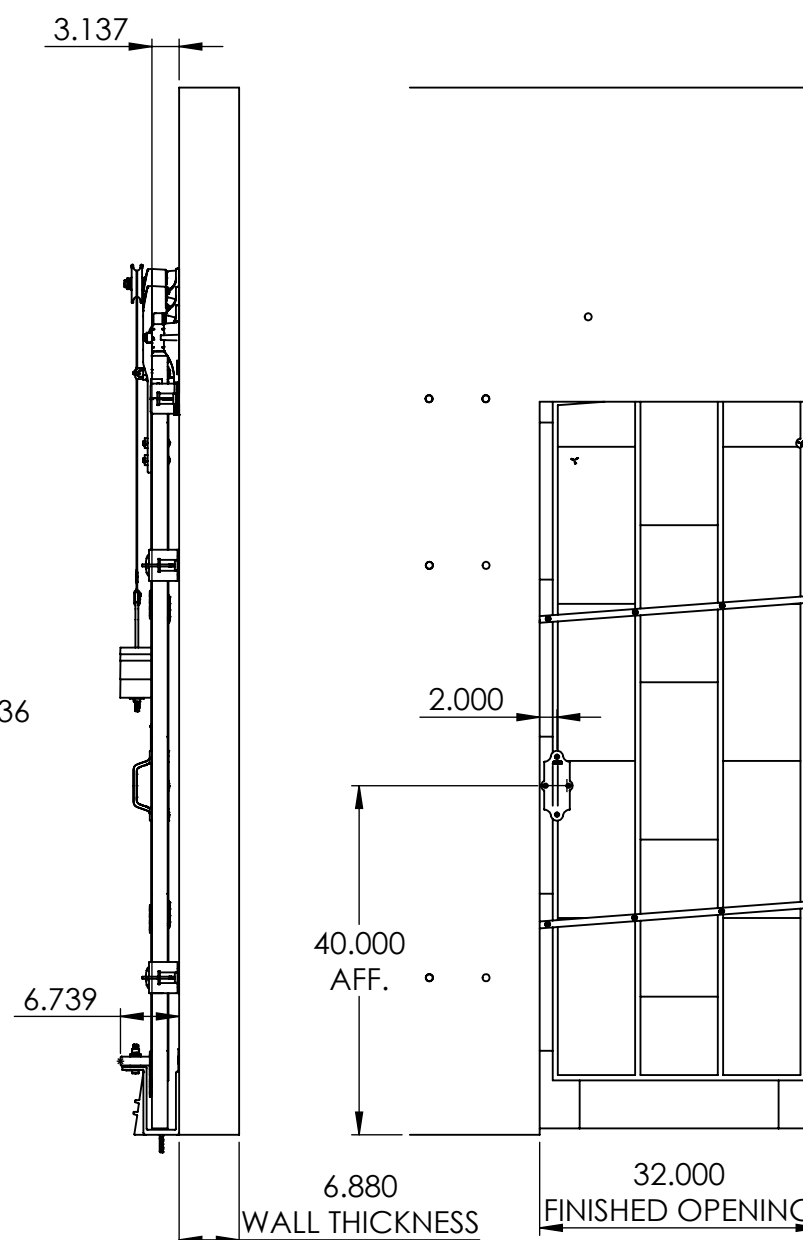
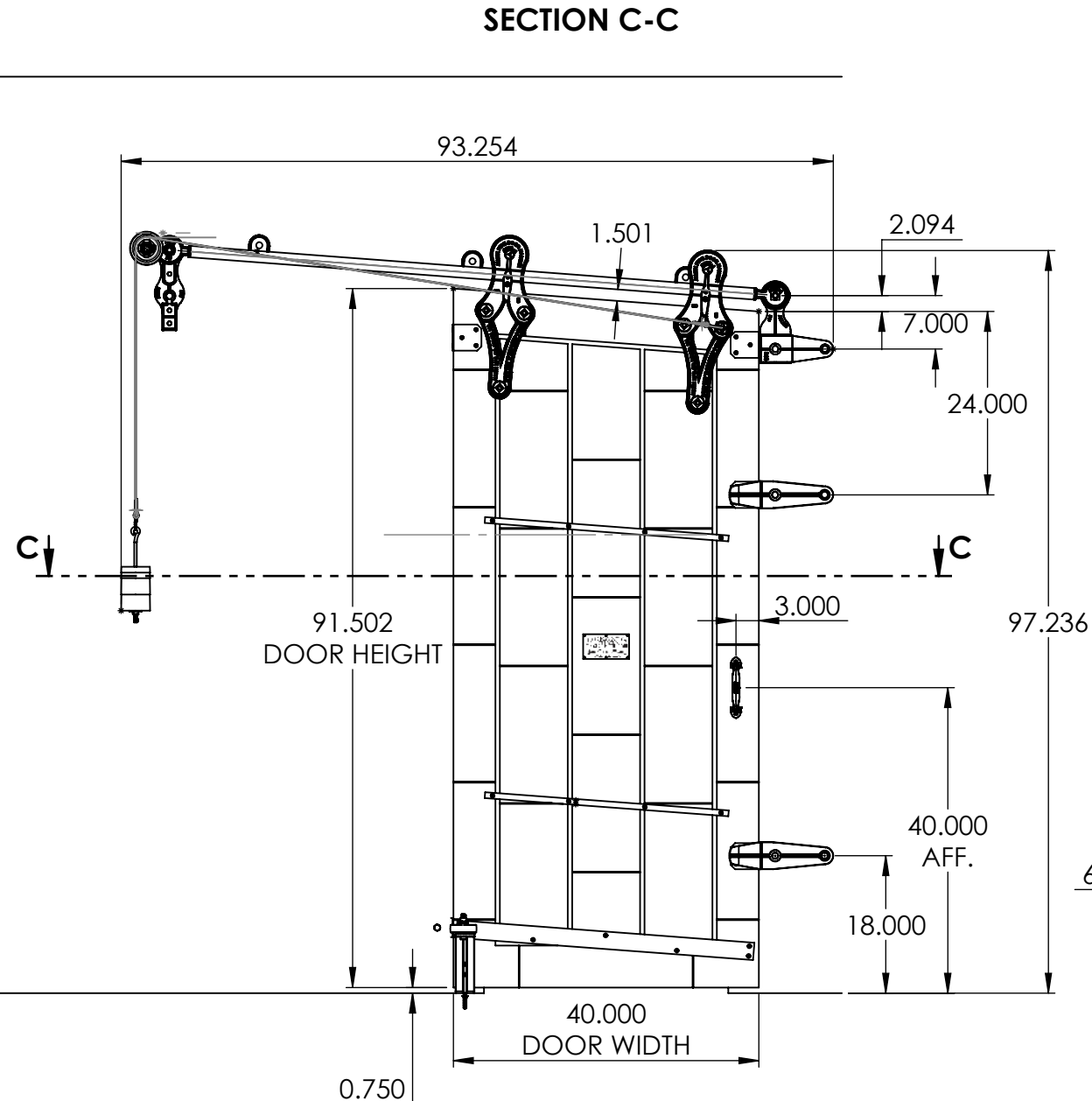
COPYRIGHTED CAD GENERATED DRAWING. DO NOT MANUALLY UPDATE	
DRAWN BY HT	DRAWN DATE 23-04-2025
CHECKED BY	CHECKED BY
APPROVED BY	APPROVED DATE
SHEET 2 OF 5	THIRD ANGLE PROJECTION
SCALE: 1:22	

ALLITH MANUFACTURING COMPANY	
DESCRIPTION Series 732 Allith track system with Durand's metal-clad door for 32"w x 84"h opening, left hand	
SIZE B	P/N 416-10-150
	REV.



SECTION C-C

# INSIDE DOOR CLOSED POSITION



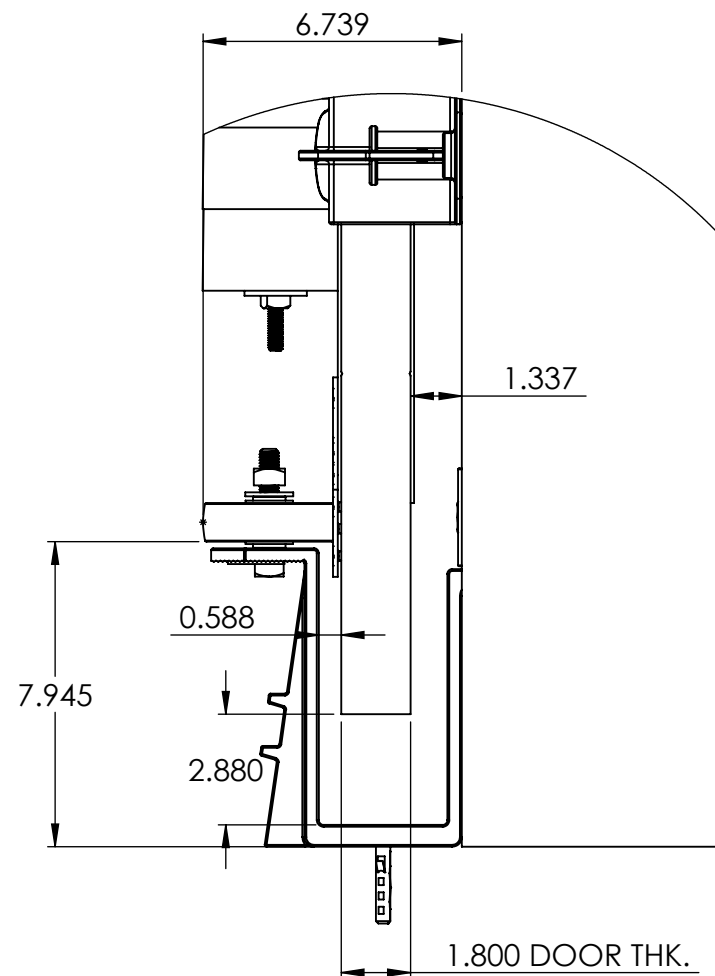
# CLOSED CONDITION

REV.	DESCRIPTION	DATE	BY	APPR'D
REVISION				
THE INFORMATION CONTAINED IN THIS DRAWING IS THE SOLE PROPERTY OF SCOTT WILLO SOLUTION ANY REPRODUCTION IN PART OR WHOLE WITHOUT THE WRITTEN PERMISSION OF SWS IS STRICTLY PROHIBITED.				

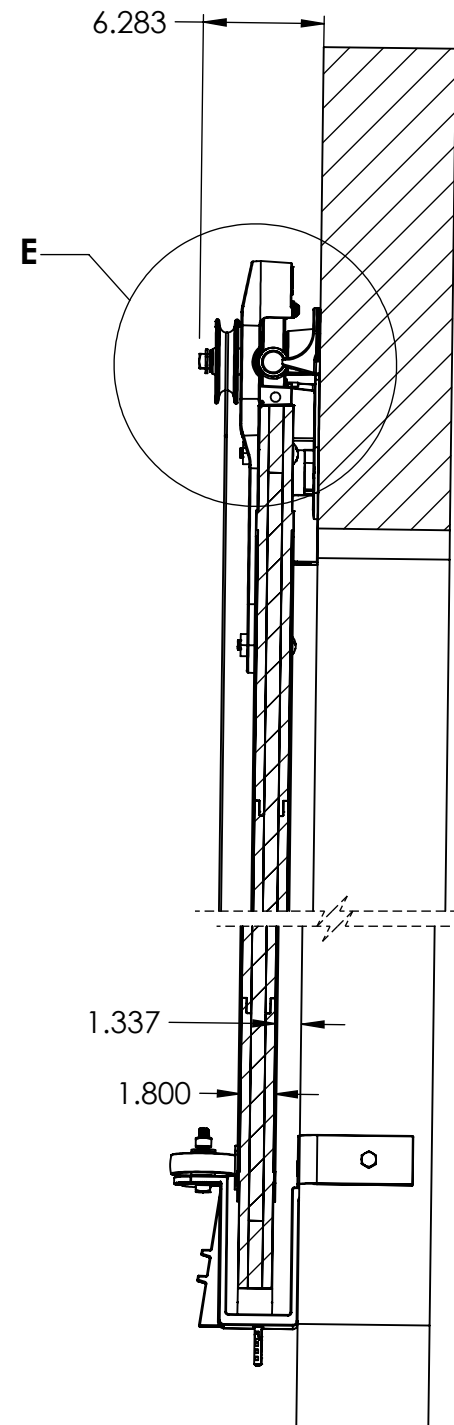
UNLESS OTHERWISE SPECIFIED  
DIMENSIONS ARE IN INCHES  
TOLERANCES ARE:  
.X= ±.030  
.XX= ±.015  
.XXX= ±.005  
ANGULAR= ±1°  
MACHINED SURFACES TO HAVE  
125 RMS FINISH  
CONCENTRICITY= ±.002 T.I.R.  
BREAK ALL SHARP EDGES

COPYRIGHTED CAD GENERATED DRAWING, DO NOT MANUALLY UPDATE	
DRAWN BY HT	DRAWN DATE 23-04-2025
CHECKED BY	CHECKED BY
APPROVED BY	APPROVED DATE
SHEET 3 OF 5	THIRD ANGLE PROJECTION
SCALE: 1:22	

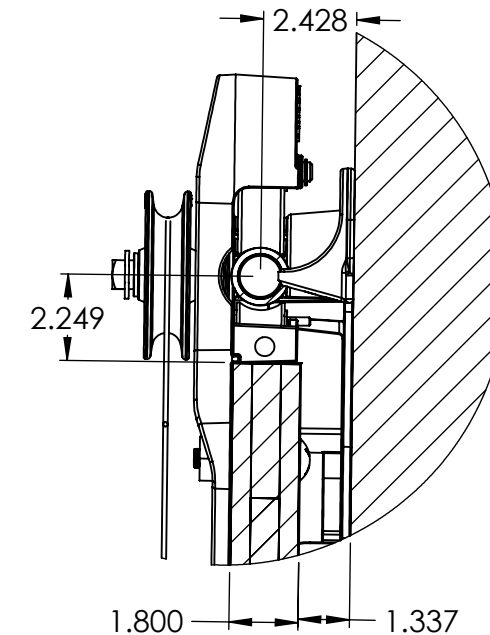
ALLITH MANUFACTURING COMPANY	
DESCRIPTION Series 732 Allith track system with Durand's metal-clad door for 32"w x 84"h opening, left hand	
SIZE B	P/N 416-10-150
REV.	



**DETAIL B**  
**SCALE 1 : 5**



**SECTION D-D**  
**SCALE 1 : 10**



**DETAIL E**  
**SCALE 1 : 5**

REV.	DESCRIPTION	DATE	BY	APPR'D
<b>REVISION</b>				
THE INFORMATION CONTAINED IN THIS DRAWING IS THE SOLE PROPERTY OF SCOTT WILLO SOLUTION ANY REPRODUCTION IN PART OR WHOLE WITHOUT THE WRITTEN PERMISSION OF SWS IS STRICTLY PROHIBITED.				

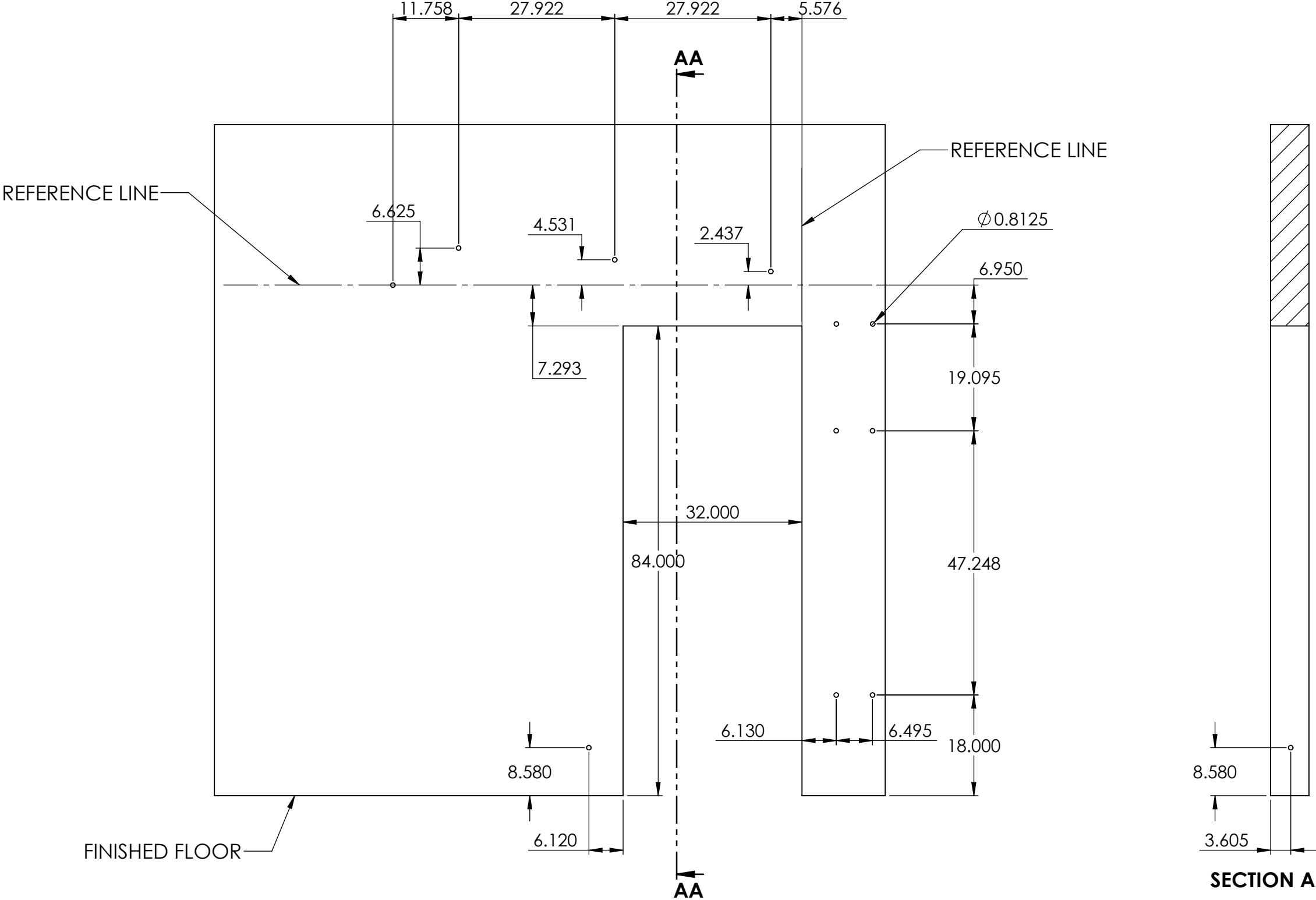
UNLESS OTHERWISE SPECIFIED  
DIMENSIONS ARE IN INCHES  
TOLERANCES ARE:  
.X=  $\pm .030$   
.XX=  $\pm .015$   
.XXX=  $\pm .005$   
ANGULAR=  $\pm 1^\circ$   
MACHINED SURFACES TO HAVE  
125 RMS FINISH  
CONCENTRICITY=  $\pm .002$  T.I.R.  
BREAK ALL SHARP EDGES

COPYRIGHTED CAD GENERATED DRAWING, DO NOT MANUALLY UPDATE	
DRAWN BY HT	DRAWN DATE 23-04-2025
CHECKED BY	CHECKED BY
APPROVED BY	APPROVED DATE
SHEET 4 OF 5	THIRD ANGLE PROJECTION
SCALE: 1:22	

**ALLLITH  
MANUFACTURING  
COMPANY**

DESCRIPTION  
Series 732 Allith track system with Durand's metal-clad door for 32"w x 84"h opening, left hand

SIZE P/N **416-10-150** REV.



WALL PENETRATION HOLE CENTERS

REV.	DESCRIPTION	DATE	BY	APPR'D
REVISION				
THE INFORMATION CONTAINED IN THIS DRAWING IS THE SOLE PROPERTY OF SCOTT WILLO SOLUTION ANY REPRODUCTION IN PART OR WHOLE WITHOUT THE WRITTEN PERMISSION OF SWS IS STRICTLY PROHIBITED.				

UNLESS OTHERWISE SPECIFIED  
DIMENSIONS ARE IN INCHES  
TOLERANCES ARE:  
.X= ±.030  
.XX= ±.015  
.XXX= ±.005  
ANGULAR= ±1°  
MACHINED SURFACES TO HAVE  
125 RMS FINISH  
CONCENTRICITY= ±.002 T.I.R.  
BREAK ALL SHARP EDGES

COPYRIGHTED CAD GENERATED DRAWING, DO NOT MANUALLY UPDATE	
DRAWN BY HT	DRAWN DATE 23-04-2025
CHECKED BY	CHECKED BY
APPROVED BY	APPROVED DATE
SHEET 5 OF 5	THIRD ANGLE PROJECTION
SCALE: 1:50	

ALLITH MANUFACTURING COMPANY	
DESCRIPTION Series 732 Allith track system with Durand's metal-clad door for 32"w x 84"h opening, left hand	
SIZE B	P/N 416-10-150
REV.	