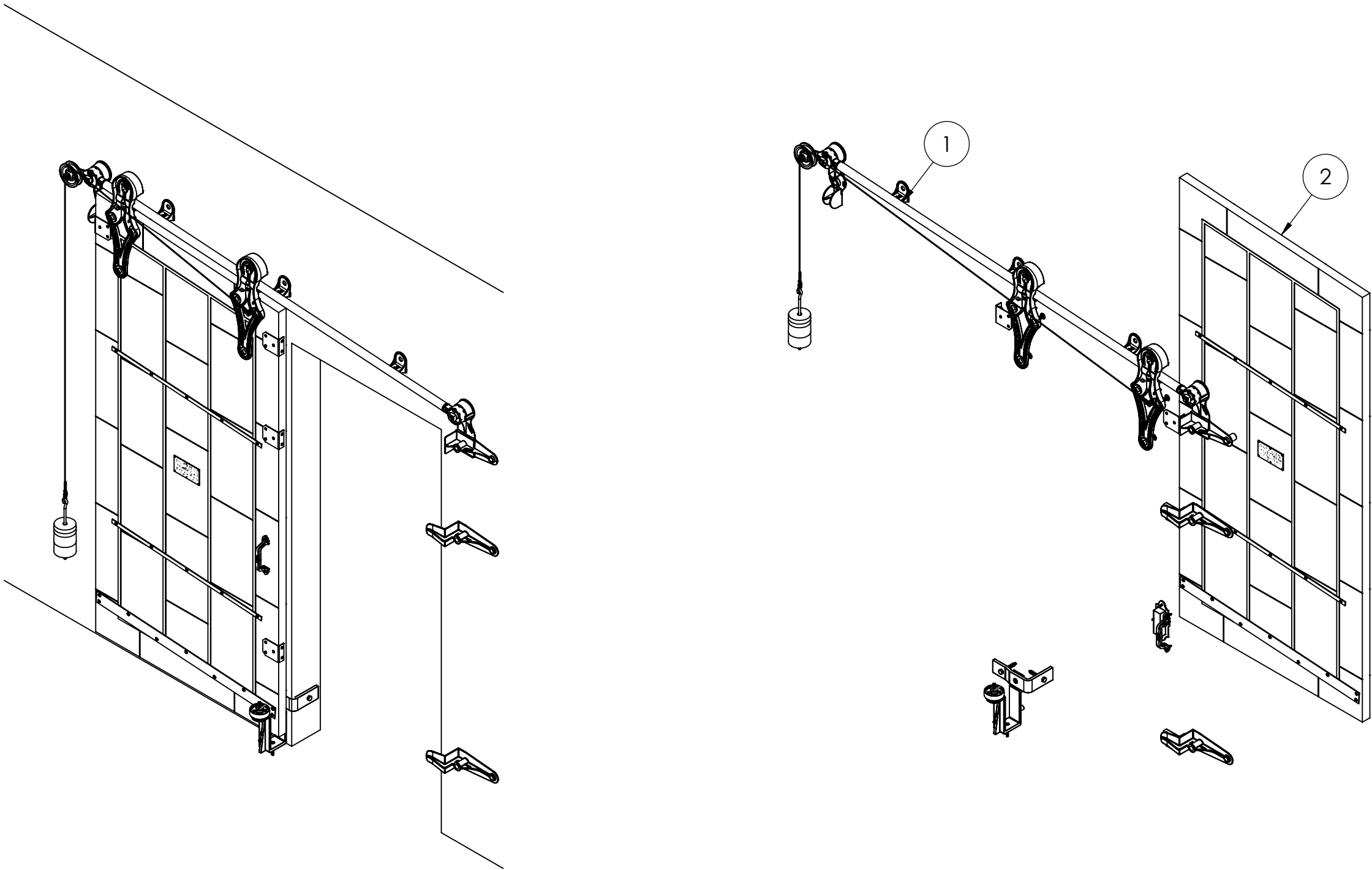


ITEM NO.	PART NUMBER	DESCRIPTION	MATERIAL	COLOR	SIZE	QTY.
1	316-10-170	No.736 Allith sliding fire door track system for 36" wide opening	Cast iron and steel	Black RAL 9005 (25-35 gloss)	0	1
2	820-20-450	Metal Clad Door for No.736 Series Hardware with Sloped Top for 36" x 84" Opening, left hand	Sheet metal	Galvalume	44" x 90" centerline x 1-3/4"	1



REV.	DESCRIPTION	DATE	BY	APPR'D
REVISION				
THE INFORMATION CONTAINED IN THIS DRAWING IS THE SOLE PROPERTY OF SCOTT WILLO SOLUTION ANY REPRODUCTION IN PART OR WHOLE WITHOUT THE WRITTEN PERMISSION OF SWS IS STRICTLY PROHIBITED.				

UNLESS OTHERWISE SPECIFIED  
DIMENSIONS ARE IN INCHES  
TOLERANCES ARE:  
.X= ±.030  
.XX= ±.015  
.XXX= ±.005  
ANGULAR= ±1°  
MACHINED SURFACES TO HAVE  
125 RMS FINISH  
CONCENTRICITY= ±.002 T.I.R.  
BREAK ALL SHARP EDGES

COPYRIGHTED CAD GENERATED DRAWING. DO NOT MANUALLY UPDATE	
DRAWN BY HT	DRAWN DATE 21-04-2025
CHECKED BY	CHECKED BY
APPROVED BY	APPROVED DATE
SHEET 1 OF 5	THIRD ANGLE PROJECTION
SCALE: 1:20	

ALLITH MANUFACTURING COMPANY	
DESCRIPTION Series 736 Allith track system with Durand's metal-clad door for 36"w x 84"h opening, left hand	
SIZE B	P/N 416-10-170
REV.	



Technical drawing of a door assembly, showing a cross-section (A) and a plan view (B).


**View A (Cross-section):** Shows the door frame, hinge, and handle. The door is shown in a closed position.

**View B (Plan view):** Shows the door's dimensions. The door is labeled with a width of 36.000 and a height of 36.000. The clear opening is indicated as 36.000.

## OPEN CONDITION

REV.	DESCRIPTION	DATE	BY	APPR.
<b>REVISION</b>				
THE INFORMATION CONTAINED IN THIS DRAWING IS THE SOLE PROPERTY OF SCOTT WILLO SOLUTION ANY REPRODUCTION IN PART OR WHOLE WITHOUT THE WRITTEN PERMISSION OF SWS IS STRICTLY PROHIBITED.				

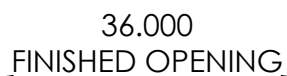
UNLESS OTHERWISE SPECIFIED  
DIMENSIONS ARE IN INCHES  
TOLERANCES ARE:  
.X=  $\pm .030$   
.XX=  $\pm .015$   
.XXX=  $\pm .005$   
ANGULAR=  $\pm 1^\circ$   
MACHINED SURFACES TO HAVE  
125 RMS FINISH  
CONCENTRICITY=  $\pm .002$  T.I.R.  
BREAK ALL SHARP EDGES

COPYRIGHTED CAD GENERATED DRAWING, DO NOT MANUALLY UPDATE	
DRAWN BY HT	DRAWN DATE 21-04-2025
CHECKED BY	CHECKED BY
APPROVED BY	APPROVED DATE
SHEET 2 OF 5	 THIRD ANGLE PROJECTION
SCALE: 1:22	

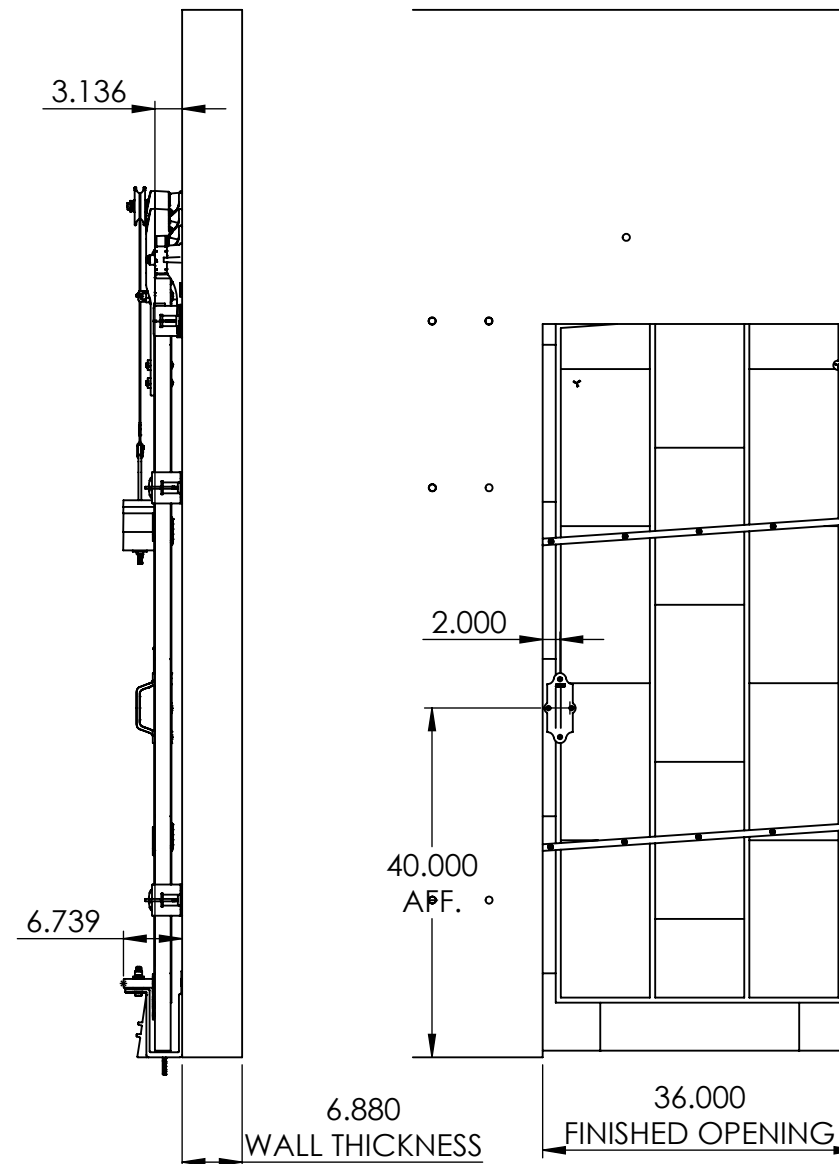
**ALLITH  
MANUFACTURING  
COMPANY**

Y	DESCRIPTION
DATE	Series 736 Allith track system with Durand's metal-clad door for 36"w x 84"h opening, left hand

SIZE B	P/N <b>416-10-170</b>	REV.
-----------	--------------------------	------




## INSIDE DOOR CLOSED POSITION



## CLOSED CONDITION

REV.	DESCRIPTION	DATE	BY	APPR.
<b>REVISION</b>				
THE INFORMATION CONTAINED IN THIS DRAWING IS THE SOLE PROPERTY OF SCOTT WILLO SOLUTION ANY REPRODUCTION IN PART OR WHOLE WITHOUT THE WRITTEN PERMISSION OF SWS IS STRICTLY PROHIBITED.				

UNLESS OTHERWISE SPECIFIED  
DIMENSIONS ARE IN INCHES  
TOLERANCES ARE:  
.X=  $\pm .030$   
.XX=  $\pm .015$   
.XXX=  $\pm .005$   
ANGULAR=  $\pm 1^\circ$   
MACHINED SURFACES TO HAVE  
125 RMS FINISH  
CONCENTRICITY=  $\pm .002$  T.I.R.  
BREAK ALL SHARP EDGES

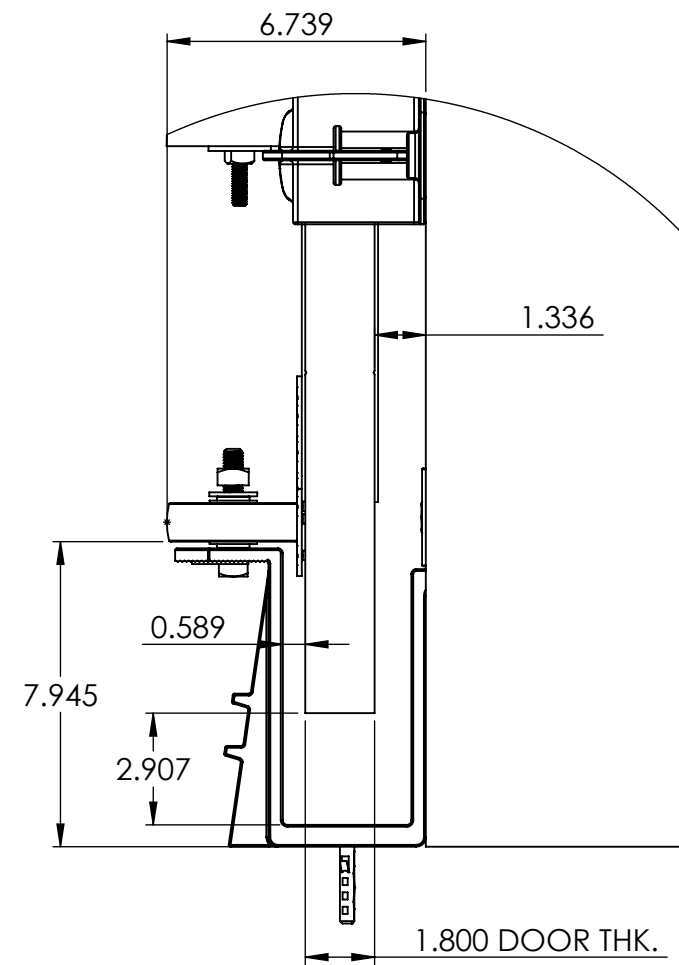
COPYRIGHTED CAD GENERATED DRAWING, DO NOT MANUALLY UPDATE	
DRAWN BY HT	DRAWN DATE 21-04-2025
CHECKED BY	CHECKED BY
APPROVED BY	APPROVED DATE
SHEET 3 OF 5	 THIRD ANGLE PROJECTION
SCALE: 1:22	

**ALLITH  
MANUFACTURING  
COMPANY**

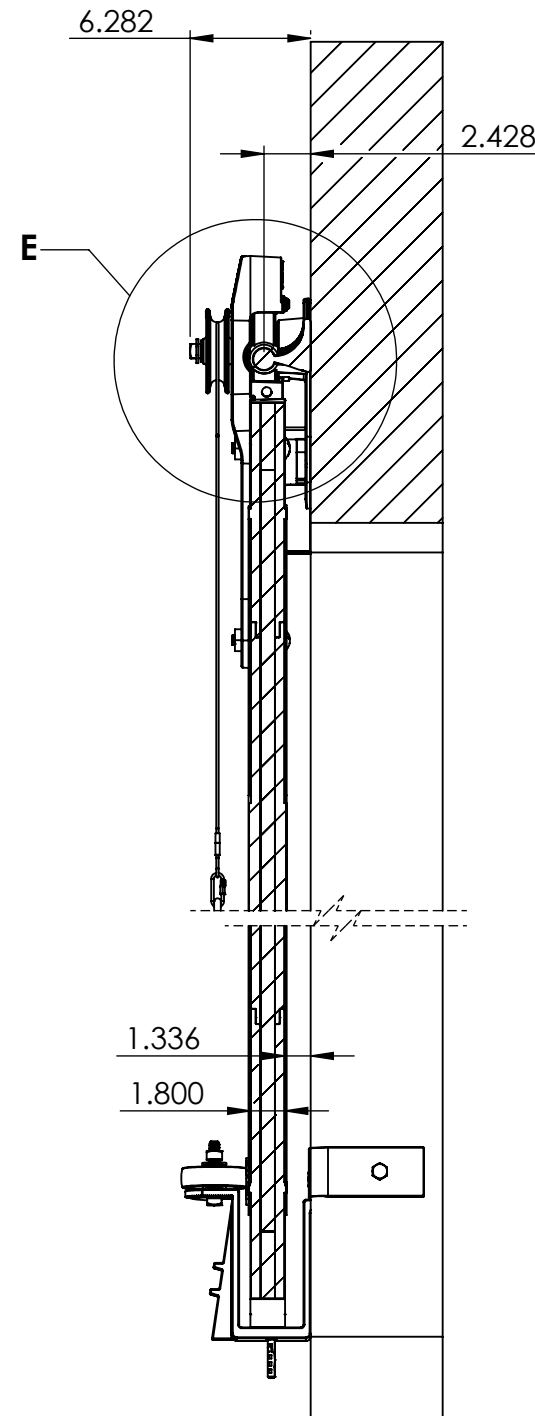
Y	DESCRIPTION
DATE	Series 736 Allith track system with Durand's metal-clad door for 36"w x 84"h opening, left hand

SIZE B	P/N <b>416-10-170</b>
-----------	--------------------------

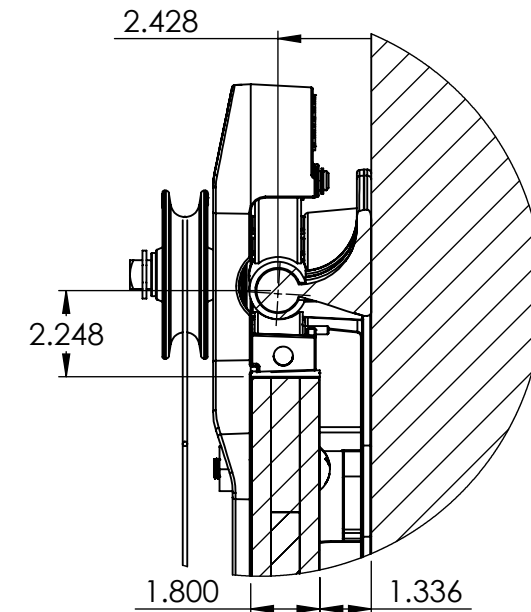
EV.



**DETAIL B**  
**SCALE 1 : 5**



**SECTION D-D**  
**SCALE 1 : 10**



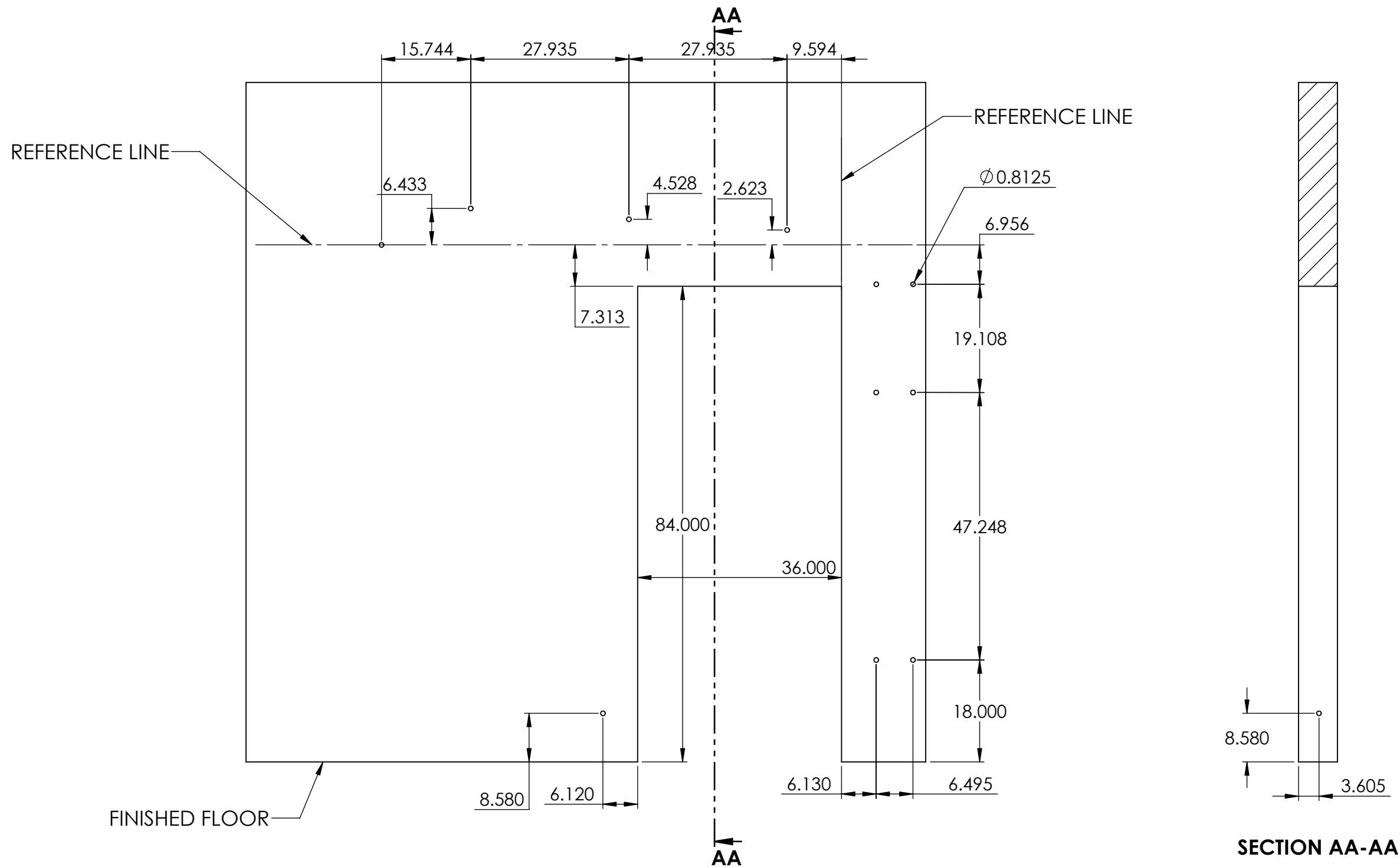
**DETAIL E**  
**SCALE 1 : 5**

REV.	DESCRIPTION	DATE	BY	APPR'D
<b>REVISION</b>				
THE INFORMATION CONTAINED IN THIS DRAWING IS THE SOLE PROPERTY OF SCOTT WILLO SOLUTION ANY REPRODUCTION IN PART OR WHOLE WITHOUT THE WRITTEN PERMISSION OF SWS IS STRICTLY PROHIBITED.				

UNLESS OTHERWISE SPECIFIED  
DIMENSIONS ARE IN INCHES  
TOLERANCES ARE:  
.X=  $\pm .030$   
.XX=  $\pm .015$   
.XXX=  $\pm .005$   
ANGULAR=  $\pm 1^\circ$   
MACHINED SURFACES TO HAVE  
125 RMS FINISH  
CONCENTRICITY=  $\pm .002$  T.I.R.  
BREAK ALL SHARP EDGES

COPYRIGHTED CAD GENERATED DRAWING, DO NOT MANUALLY UPDATE	
DRAWN BY HT	DRAWN DATE 21-04-2025
CHECKED BY	CHECKED BY
APPROVED BY	APPROVED DATE
SHEET 4 OF 5	THIRD ANGLE PROJECTION
SCALE: 1:22	

<b>ALLITH MANUFACTURING COMPANY</b>	
DESCRIPTION Series 736 Allith track system with Durand's metal-clad door for 36"w x 84"h opening, left hand	
SIZE <b>B</b>	P/N <b>416-10-170</b>
REV.	



# WALL PENETRATION HOLE CENTERS

REV.	DESCRIPTION	DATE	BY	APPR'D
REVISION				
THE INFORMATION CONTAINED IN THIS DRAWING IS THE SOLE PROPERTY OF SCOTT WILLO SOLUTION ANY REPRODUCTION IN PART OR WHOLE WITHOUT THE WRITTEN PERMISSION OF SWS IS STRICTLY PROHIBITED.				

UNLESS OTHERWISE SPECIFIED  
DIMENSIONS ARE IN INCHES  
TOLERANCES ARE:  
.X= ±.030  
.XX= ±.015  
.XXX= ±.005  
ANGULAR= ±1°  
MACHINED SURFACES TO HAVE  
125 RMS FINISH  
CONCENTRICITY= ±.002 T.I.R.  
BREAK ALL SHARP EDGES

COPYRIGHTED CAD GENERATED DRAWING, DO NOT MANUALLY UPDATE	
DRAWN BY HT	DRAWN DATE 21-04-2025
CHECKED BY	CHECKED BY
APPROVED BY	APPROVED DATE
SHEET 5 OF 5	THIRD ANGLE PROJECTION
SCALE: 1:50	

ALLITH MANUFACTURING COMPANY	
DESCRIPTION Series 736 Allith track system with Durand's metal-clad door for 36"w x 84"h opening, left hand	
SIZE B	P/N 416-10-170
REV.	