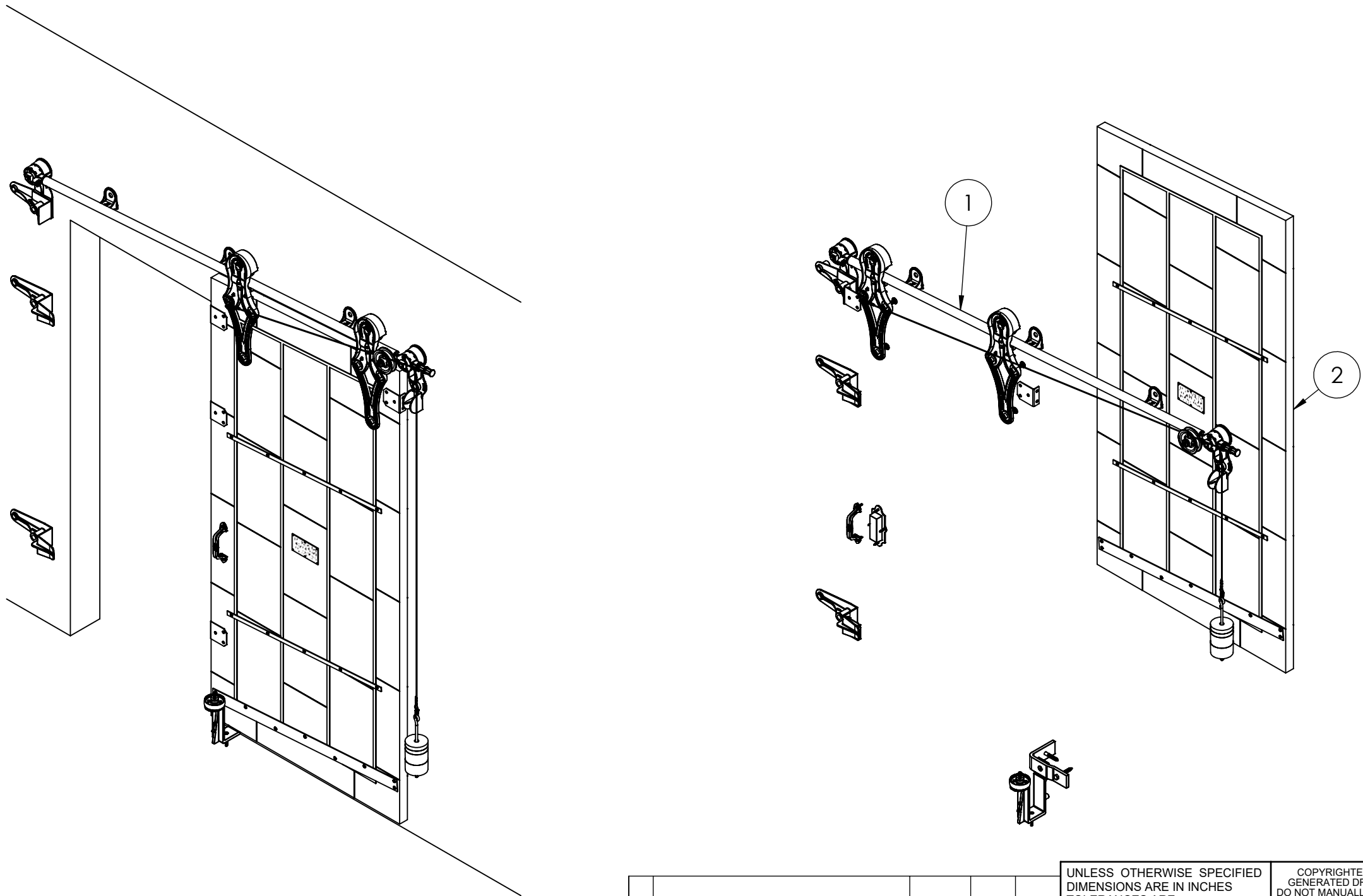


ITEM NO.	PART NUMBER	DESCRIPTION	MATERIAL	COLOR	SIZE	QTY.
1	316-10-170	No.736 Allith sliding fire door track system for 36" wide opening	Cast iron and steel	Black RAL 9005 (25-35 gloss)	0	1
2	820-20-452	Metal Clad Door for No.736 Series Hardware with Sloped Top for 36" x 84" Opening, right hand	Sheet metal	Galvalume	44" x 90" centerline x 1-3/4"	1



REV.	DESCRIPTION	DATE	BY	APPR'D
REVISION				
THE INFORMATION CONTAINED IN THIS DRAWING IS THE SOLE PROPERTY OF SCOTT WILLO SOLUTION ANY REPRODUCTION IN PART OR WHOLE WITHOUT THE WRITTEN PERMISSION OF SWS IS STRICTLY PROHIBITED.				

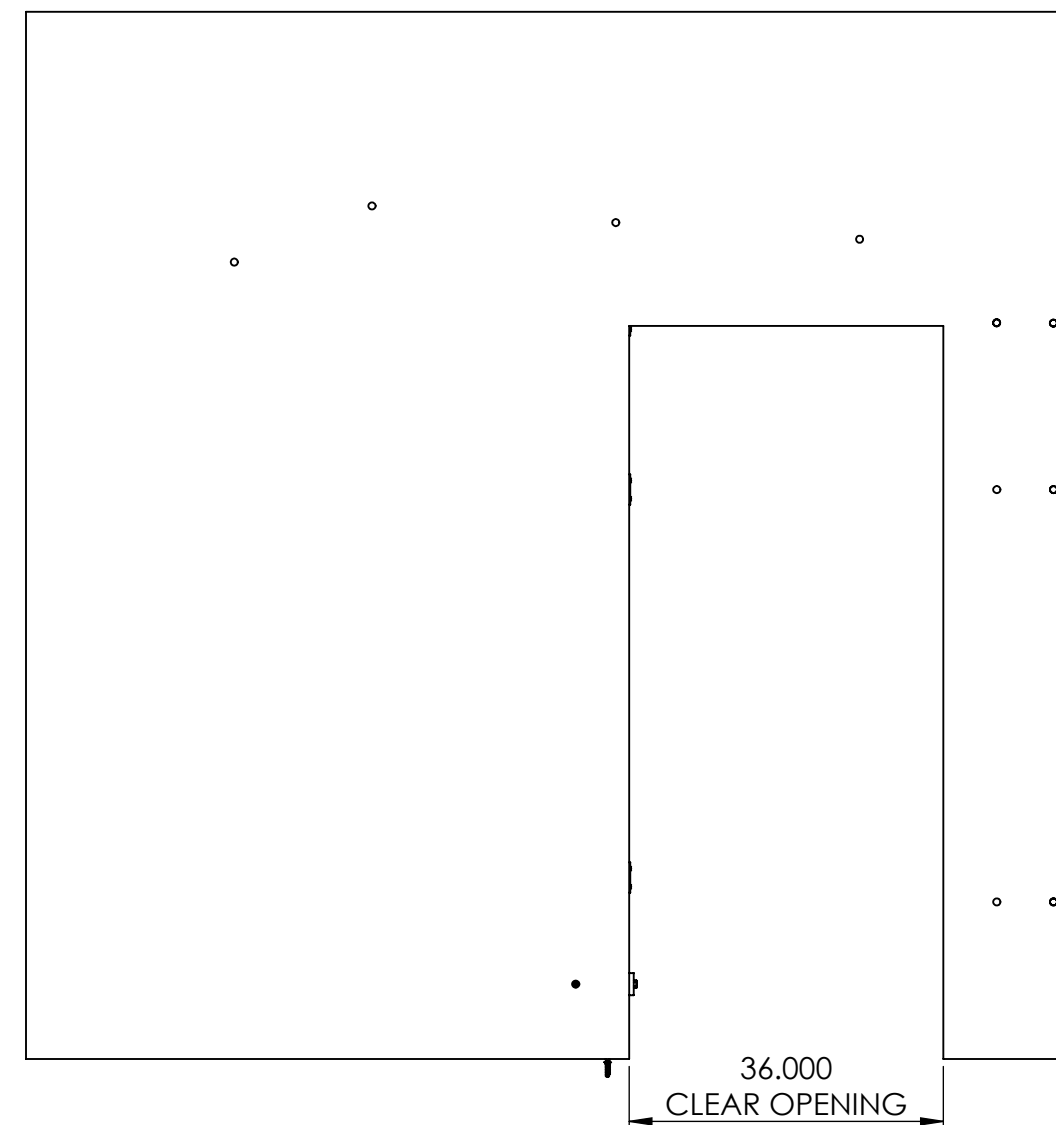
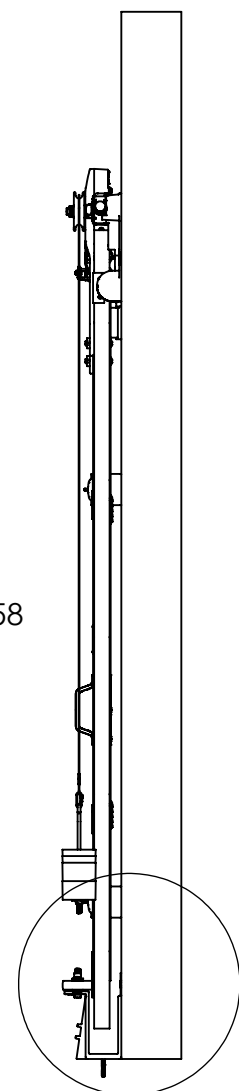
UNLESS OTHERWISE SPECIFIED
DIMENSIONS ARE IN INCHES
TOLERANCES ARE:
.X= ±.030
.XX= ±.015
.XXX= ±.005
ANGULAR= ±1°
MACHINED SURFACES TO HAVE
125 RMS FINISH
CONCENTRICITY= ±.002 T.I.R.
BREAK ALL SHARP EDGES

COPYRIGHTED CAD GENERATED DRAWING, DO NOT MANUALLY UPDATE	
DRAWN BY HT	DRAWN DATE 23-04-2025
CHECKED BY	CHECKED BY
APPROVED BY	APPROVED DATE
SHEET 1 OF 5	THIRD ANGLE PROJECTION
SCALE: 1:20	

ALLITH MANUFACTURING COMPANY	
DESCRIPTION Series 736 Allith track system with Durand's metal-clad door for 36"w x 84"h opening, right hand	
SIZE B	P/N 416-10-172
REV.	




INSIDE DOOR OPEN POSITION



OPEN CONDITION

REV.	DESCRIPTION	DATE	BY	APPROVED
REVISION				
THE INFORMATION CONTAINED IN THIS DRAWING IS THE SOLE PROPERTY OF SCOTT WILLO SOLUTION ANY REPRODUCTION IN PART OR WHOLE WITHOUT THE WRITTEN PERMISSION OF SWS IS STRICTLY PROHIBITED				

UNLESS OTHERWISE SPECIFIED
DIMENSIONS ARE IN INCHES
TOLERANCES ARE:
.X= $\pm .030$
.XX= $\pm .015$
.XXX= $\pm .005$
ANGULAR= $\pm 1^\circ$
MACHINED SURFACES TO HAVE
125 RMS FINISH
CONCENTRICITY= $\pm .002$ T.I.R.
BREAK ALL SHARP EDGES

COPYRIGHTED CAD GENERATED DRAWING, DO NOT MANUALLY UPDATE	
DRAWN BY HT	DRAWN DATE 23-04-2025
CHECKED BY	CHECKED BY
APPROVED BY	APPROVED DATE
SHEET 2 OF 5	 THIRD ANGLE PROJECTION
SCALE: 1:22	

**ALLITH
MANUFACTURING
COMPANY**

Y	DESCRIPTION
DATE	Series 736 Allith track system with Durand's metal-clad door for 36"w x 84"h opening, right hand

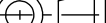
SIZE	P/N
B	416-10-172

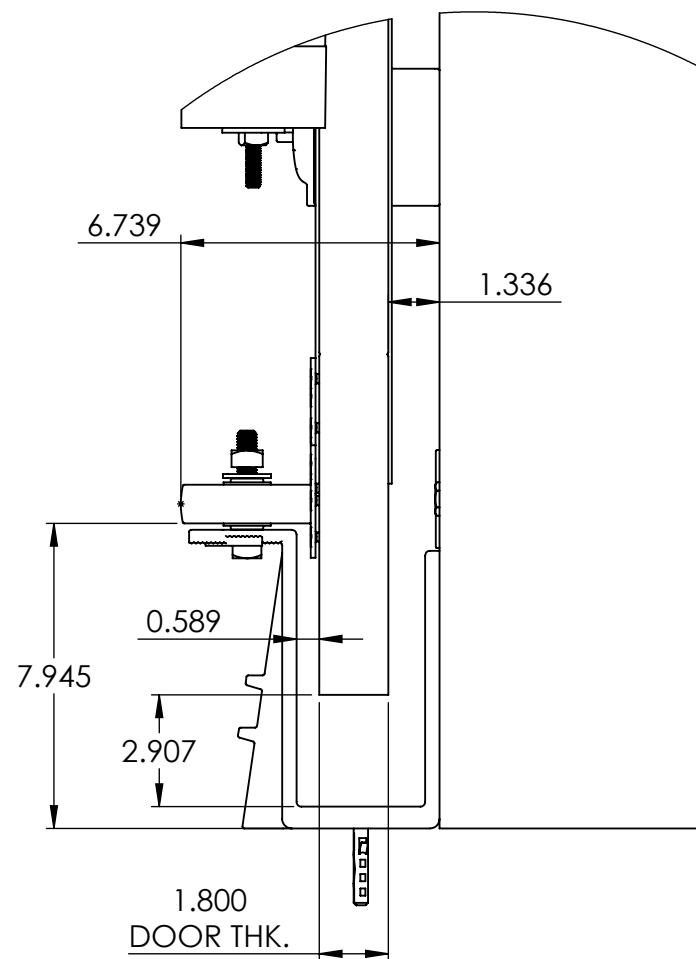
	REV.
--	------



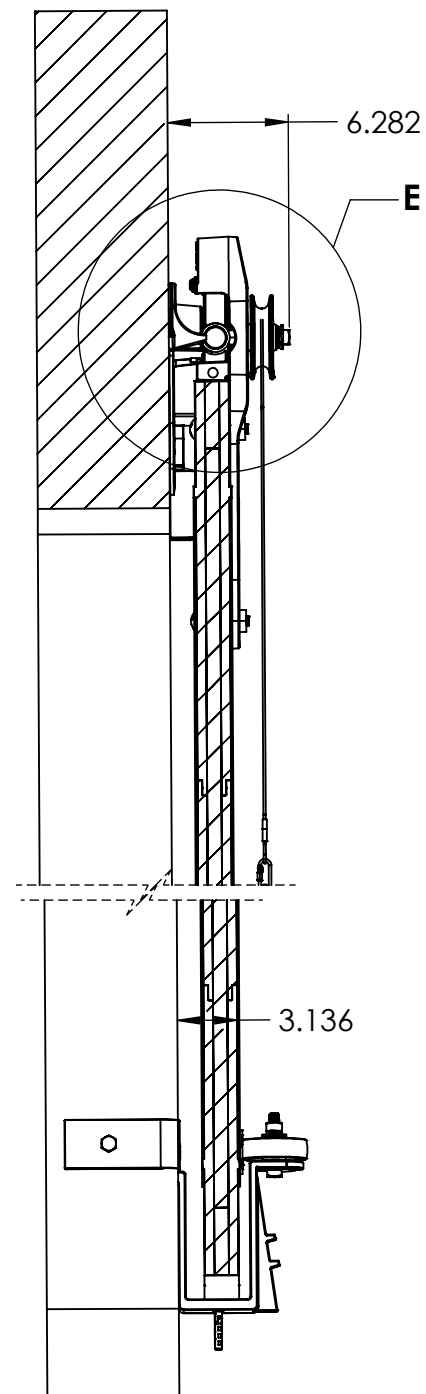
INSIDE DOOR CLOSED POSITION



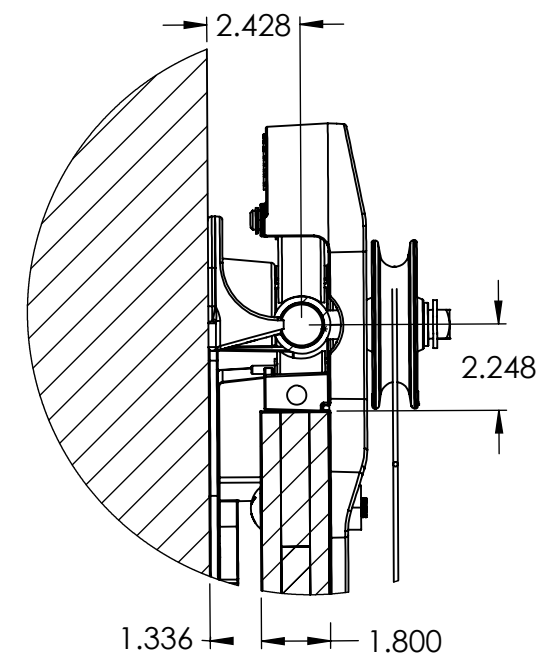
					<p>ALL DIMENSIONS ARE IN INCHES TOLERANCES ARE:</p> <p>X= ±.030 .XX= ±.015 .XXX= ±.005 ANGULAR= ±1°</p> <p>MACHINED SURFACES TO HAVE 125 RMS FINISH CONCENTRICITY= ±.002 T.I.R. BREAK ALL SHARP EDGES</p>		<p>GENERATED DRAWING, DO NOT MANUALLY UPDATE</p>		<p>ALLIETH MANUFACTURING COMPANY</p>	
					<p>DRAWN BY HT CHECKED BY APPROVED BY</p>		<p>DRAWN DATE 23-04-2025 CHECKED BY APPROVED DATE</p>		<p>DESCRIPTION</p> <p>Series 736 Allith track system with Durand's metal-clad door for 36" w x 84" h opening, right hand</p>	
<p>REV. DESCRIPTION DATE BY APPR'D</p>					<p>SHEET 3 OF 5</p>		 <p>THIRD ANGLE PROJECTION</p>		<p>SIZE B</p>	
<p>REVISION</p> <p>THE INFORMATION CONTAINED IN THIS DRAWING IS THE SOLE PROPERTY OF SCOTT WILLO SOLUTION ANY REPRODUCTION IN PART OR WHOLE WITHOUT THE WRITTEN PERMISSION OF SWS IS STRICTLY PROHIBITED.</p>					<p>SCALE: 1:22</p>		<p>P/N 416-10-172</p>		<p>REV.</p>	



DETAIL B
SCALE 1 : 5



SECTION D-D
SCALE 1 : 10



DETAIL E
SCALE 1 : 5

REV.	DESCRIPTION	DATE	BY	APPR'D
REVISION				
THE INFORMATION CONTAINED IN THIS DRAWING IS THE SOLE PROPERTY OF SCOTT WILLO SOLUTION ANY REPRODUCTION IN PART OR WHOLE WITHOUT THE WRITTEN PERMISSION OF SWS IS STRICTLY PROHIBITED.				

UNLESS OTHERWISE SPECIFIED
DIMENSIONS ARE IN INCHES
TOLERANCES ARE:
.X= $\pm .030$
.XX= $\pm .015$
.XXX= $\pm .005$
ANGULAR= $\pm 1^\circ$
MACHINED SURFACES TO HAVE
125 RMS FINISH
CONCENTRICITY= $\pm .002$ T.I.R.
BREAK ALL SHARP EDGES

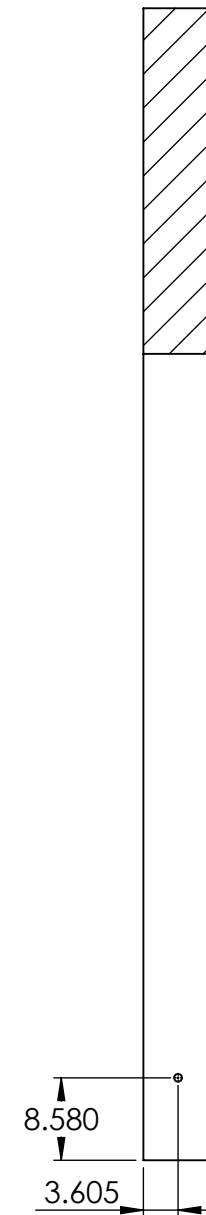
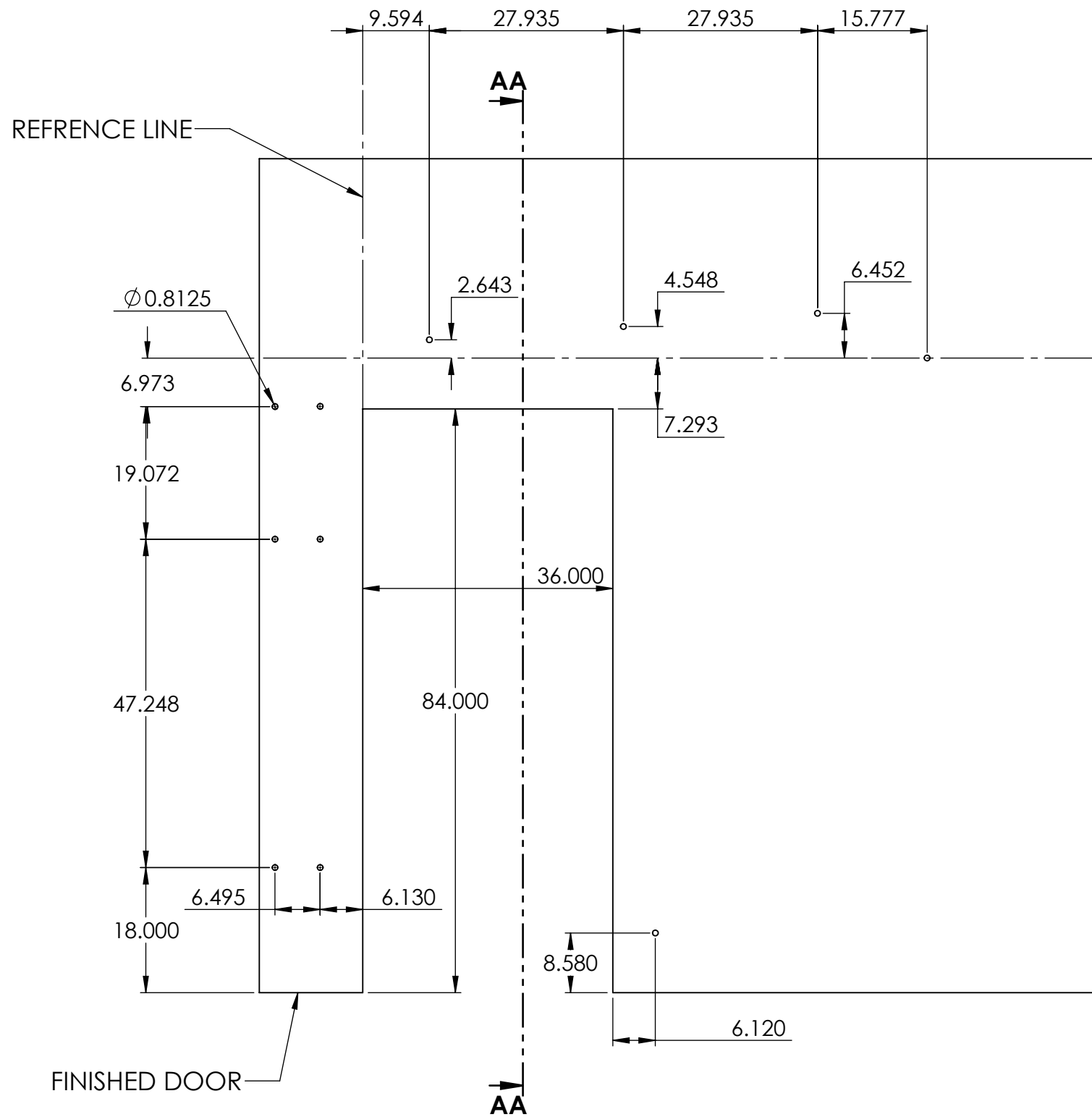
COPYRIGHTED CAD GENERATED DRAWING. DO NOT MANUALLY UPDATE	
DRAWN BY HT	DRAWN DATE 23-04-2025
CHECKED BY	CHECKED BY
APPROVED BY	APPROVED DATE
SHEET 4 OF 5	THIRD ANGLE PROJECTION
SCALE: 1:22	

**ALLITH
MANUFACTURING
COMPANY**

DESCRIPTION
Series 736 Allith track system with Durand's metal-clad door for
36"w x 84"h opening, right hand

SIZE P/N
B 416-10-172

REV.



SECTION AA-AA

WALL PENETRATION HOLE CENTERS

REV.	DESCRIPTION	DATE	BY	APPR'D
REVISION				
THE INFORMATION CONTAINED IN THIS DRAWING IS THE SOLE PROPERTY OF SCOTT WILLO SOLUTION ANY REPRODUCTION IN PART OR WHOLE WITHOUT THE WRITTEN PERMISSION OF SWS IS STRICTLY PROHIBITED.				

UNLESS OTHERWISE SPECIFIED
DIMENSIONS ARE IN INCHES
TOLERANCES ARE:
.X= $\pm .030$
.XX= $\pm .015$
.XXX= $\pm .005$
ANGULAR= $\pm 1^\circ$
MACHINED SURFACES TO HAVE
125 RMS FINISH
CONCENTRICITY= $\pm .002$ T.I.R.
BREAK ALL SHARP EDGES

COPYRIGHTED CAD GENERATED DRAWING, DO NOT MANUALLY UPDATE	
DRAWN BY HT	DRAWN DATE 23-04-2025
CHECKED BY	CHECKED BY
APPROVED BY	APPROVED DATE
SHEET 5 OF 5	THIRD ANGLE PROJECTION
SCALE: 1:20	

ALLITH MANUFACTURING COMPANY	
DESCRIPTION Series 736 Allith track system with Durand's metal-clad door for 36"w x 84"h opening, right hand	
SIZE B	P/N 416-10-172
REV.	