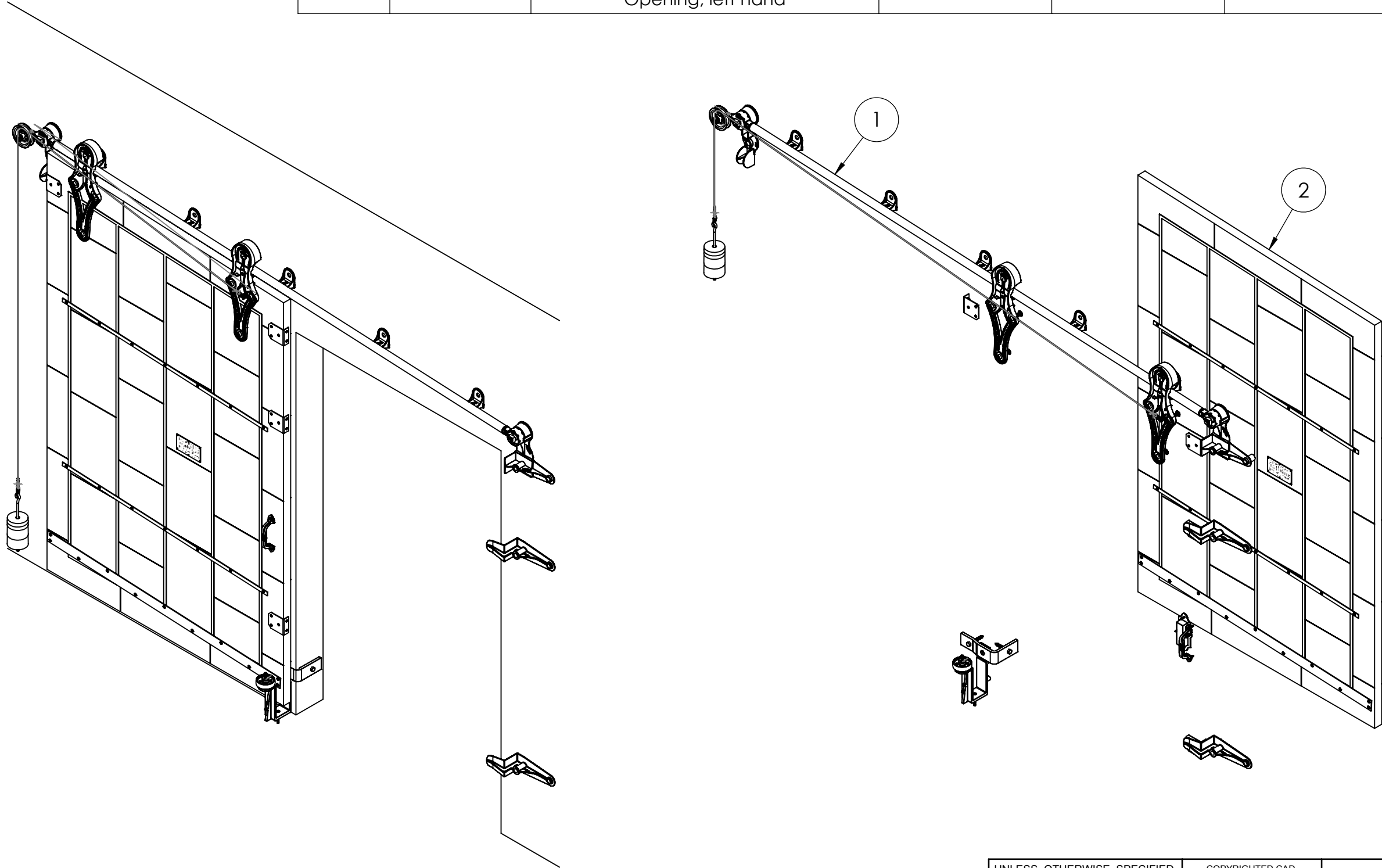


ITEM NO.	PART NUMBER	DESCRIPTION	MATERIAL	COLOR	SIZE	QTY.
1	316-10-250	No.752 Allith sliding fire door track system for 52" wide opening	Cast iron and steel	Black RAL 9005 (25-35 gloss)	0	1
2	820-20-490	Metal Clad Door for No.752 Series Hardware with Sloped Top for 52" x 84" Opening, left hand	Sheet metal	Galvalume	60" x 90" centerline x 1-3/4"	1



REV.	DESCRIPTION	DATE	BY	APPR'D
REVISION				
THE INFORMATION CONTAINED IN THIS DRAWING IS THE SOLE PROPERTY OF SCOTT WILLO SOLUTION ANY REPRODUCTION IN PART OR WHOLE WITHOUT THE WRITTEN PERMISSION OF SWS IS STRICTLY PROHIBITED.				


UNLESS OTHERWISE SPECIFIED
DIMENSIONS ARE IN INCHES
TOLERANCES ARE:
.X= ±.030
.XX= ±.015
.XXX= ±.005
ANGULAR= ±1°
MACHINED SURFACES TO HAVE
125 RMS FINISH
CONCENTRICITY= ±.002 T.I.R.
BREAK ALL SHARP EDGES

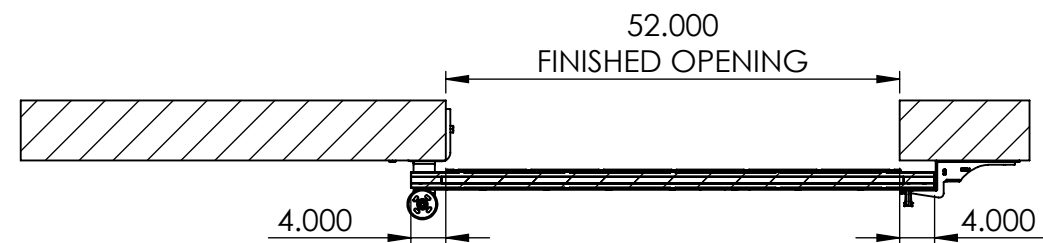
COPYRIGHTED CAD GENERATED DRAWING. DO NOT MANUALLY UPDATE	
DRAWN BY HT	DRAWN DATE 25-04-2025
CHECKED BY	CHECKED BY
APPROVED BY	APPROVED DATE
SHEET 1 OF 5	THIRD ANGLE PROJECTION
SCALE: 1:20	

ALLITH MANUFACTURING COMPANY	
DESCRIPTION Series 752 Allith track system with Durand's metal-clad door for 52" w x 84" h opening, left hand	
SIZE B	P/N 416-10-250
REV.	



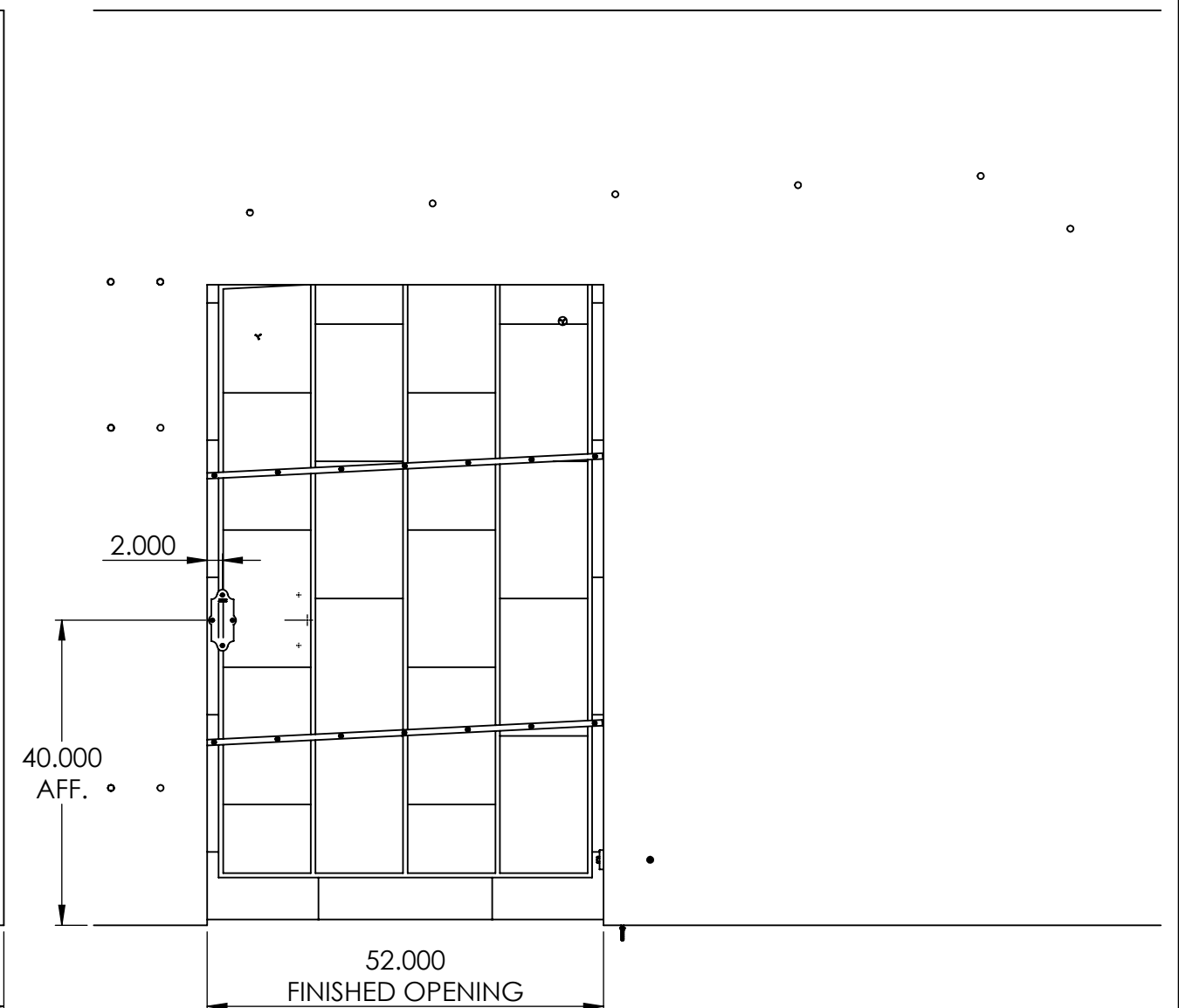
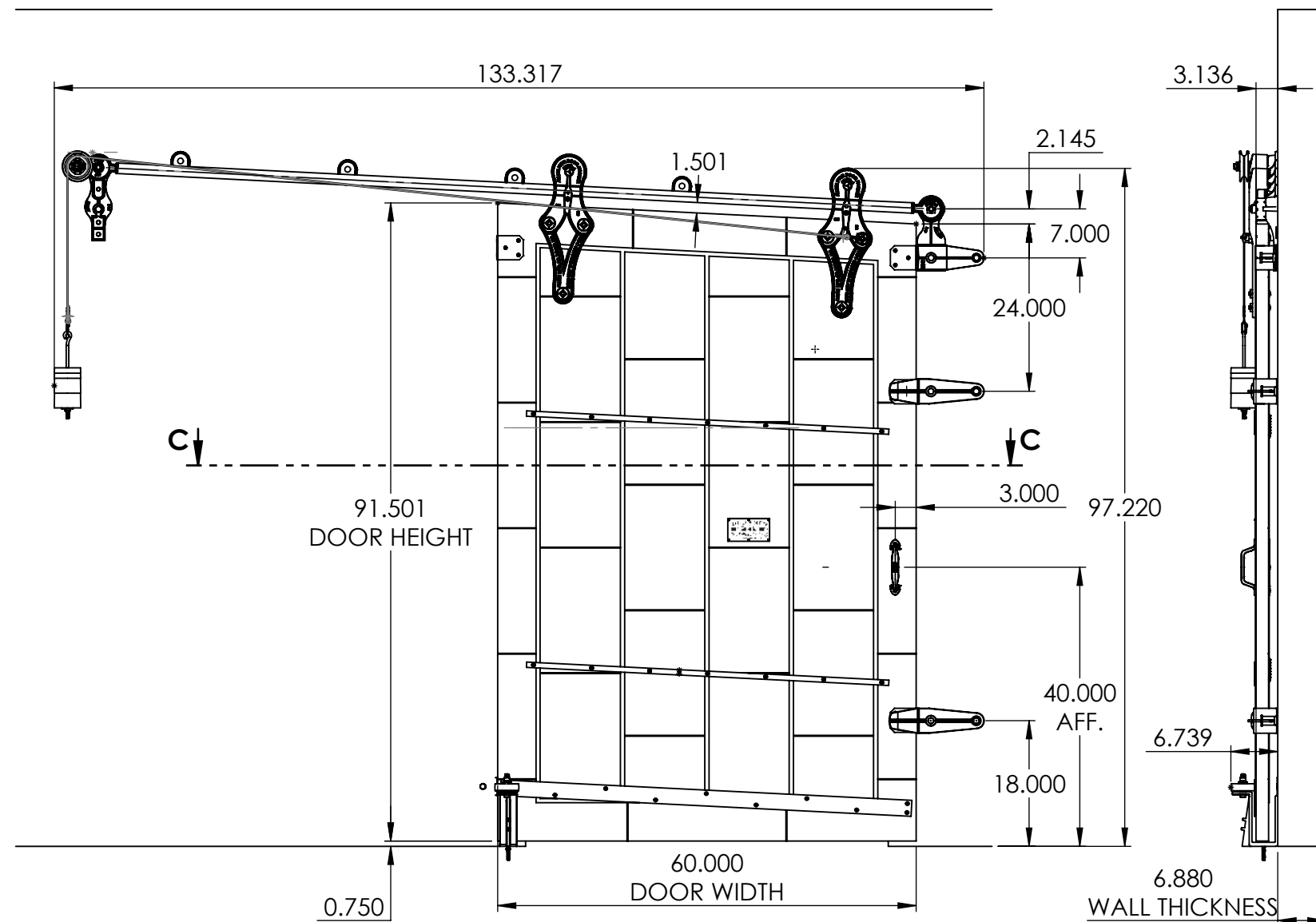
OPEN CONDITION

						<p>UNLESS OTHERWISE SPECIFIED DIMENSIONS ARE IN INCHES TOLERANCES ARE: .X= ±.030 .XX= ±.015 .XXX= ±.005 ANGULAR= ±1° MACHINED SURFACES TO HAVE 125 RMS FINISH CONCENTRICITY= ±.002 T.I.R. BREAK ALL SHARP EDGES</p>		<p>COPYRIGHTED CAD GENERATED DRAWING, DO NOT MANUALLY UPDATE</p>		<p>ALLITH MANUFACTURING COMPANY</p>	
						<p>DRAWN BY</p>		<p>DRAWN DATE</p>		<p>DESCRIPTION</p> <p>Series 752 Allith track system with Durand's metal-clad door for 52" w x 84" h opening, left hand</p>	
						<p>HT</p>		<p>25-04-2025</p>			
						<p>CHECKED BY</p>		<p>CHECKED BY</p>			
						<p>APPROVED BY</p>		<p>APPROVED DATE</p>			
<p>REV. DESCRIPTION DATE BY APPR'D</p>						<p>SHEET 2 OF 5</p>				<p>SIZE B P/N</p>	
<p>REVISION</p> <p>THE INFORMATION CONTAINED IN THIS DRAWING IS THE SOLE PROPERTY OF SCOTT WILLO SOLUTION ANY REPRODUCTION IN PART OR WHOLE WITHOUT THE WRITTEN PERMISSION OF SWS IS STRICTLY PROHIBITED.</p>						<p>SCALE: 1:22</p>		<p>THIRD ANGLE PROJECTION</p>		<p>416-10-250</p>	
										<p>REV.</p>	



SECTION C-C

INSIDE DOOR CLOSED POSITION



CLOSED CONDITION

REV.	DESCRIPTION	DATE	BY	APP'D
REVISION				
THE INFORMATION CONTAINED IN THIS DRAWING IS THE SOLE PROPERTY OF SCOTT WILLO SOLUTION ANY REPRODUCTION IN PART OR WHOLE WITHOUT THE WRITTEN PERMISSION OF SWS IS STRICTLY PROHIBITED.				

UNLESS OTHERWISE SPECIFIED
DIMENSIONS ARE IN INCHES
TOLERANCES ARE:
.X= ± 0.030
.XX= ± 0.015
.XXX= ± 0.005
ANGULAR= $\pm 1^\circ$
MACHINED SURFACES TO HAVE
125 RMS FINISH
CONCENTRICITY= ± 0.002 T.I.R.
BREAK ALL SHARP EDGES

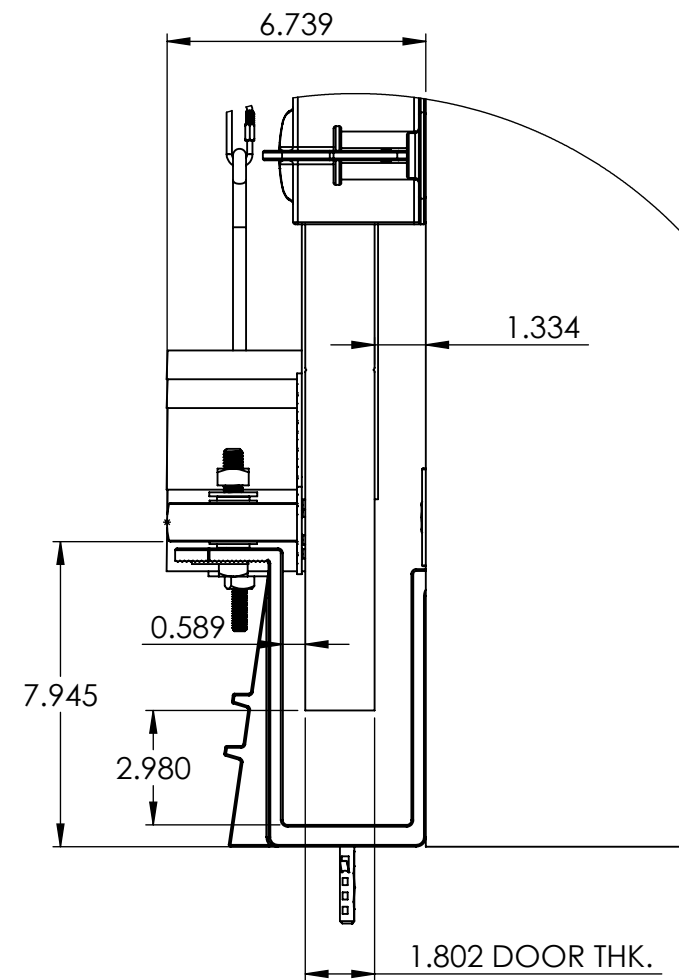
COPYRIGHTED CAD GENERATED DRAWING. DO NOT MANUALLY UPDATE	
DRAWN BY HT	DRAWN DATE 25-04-2025
CHECKED BY	CHECKED BY
APPROVED BY	APPROVED DATE
SHEET 3 OF 5	THIRD ANGLE PROJECTION
SCALE: 1:22	

**ALLITH
MANUFACTURING
COMPANY**

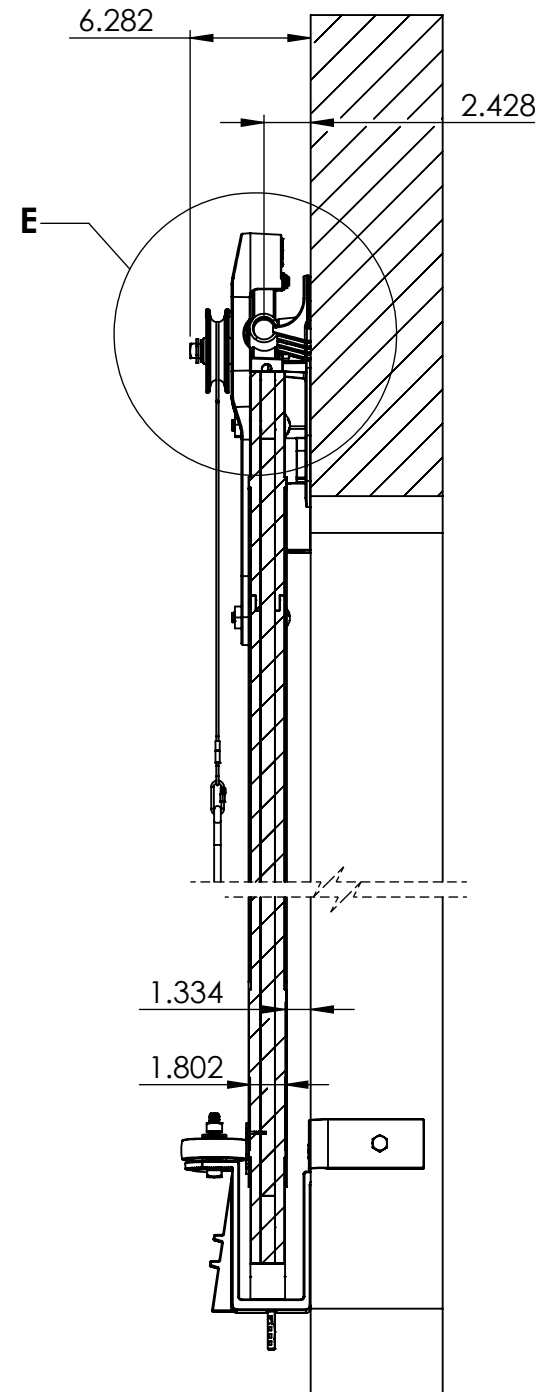
DESCRIPTION
Series 752 Allith track system with Durand's metal-clad door for
52" w x 84" h opening, left hand

SIZE P/N
B 416-10-250

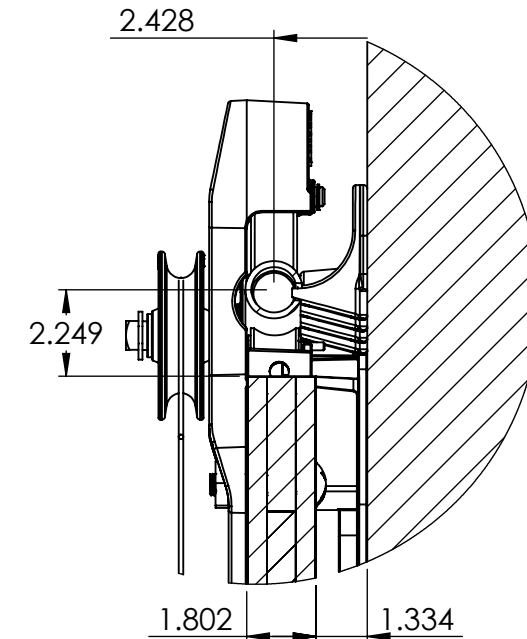
REV.



DETAIL B
SCALE 1 : 5



SECTION D-D
SCALE 1 : 10



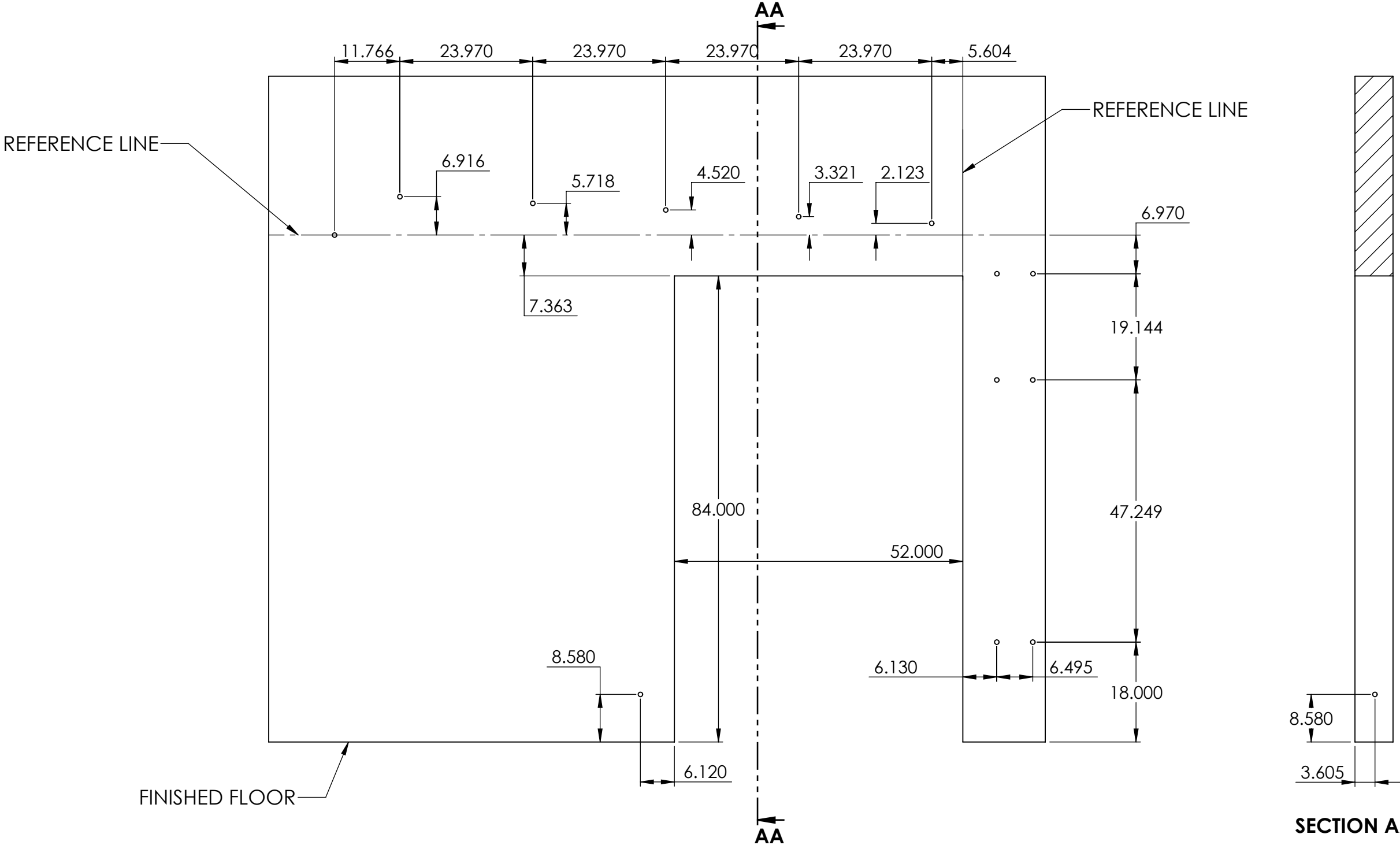
DETAIL E
SCALE 1 : 5

REV.	DESCRIPTION	DATE	BY	APPR'D
REVISION				
THE INFORMATION CONTAINED IN THIS DRAWING IS THE SOLE PROPERTY OF SCOTT WILLO SOLUTION ANY REPRODUCTION IN PART OR WHOLE WITHOUT THE WRITTEN PERMISSION OF SWS IS STRICTLY PROHIBITED.				

UNLESS OTHERWISE SPECIFIED
DIMENSIONS ARE IN INCHES
TOLERANCES ARE:
.X= $\pm .030$
.XX= $\pm .015$
.XXX= $\pm .005$
ANGULAR= $\pm 1^\circ$
MACHINED SURFACES TO HAVE
125 RMS FINISH
CONCENTRICITY= $\pm .002$ T.I.R.
BREAK ALL SHARP EDGES

COPYRIGHTED CAD GENERATED DRAWING, DO NOT MANUALLY UPDATE	
DRAWN BY HT	DRAWN DATE 25-04-2025
CHECKED BY	CHECKED BY
APPROVED BY	APPROVED DATE
SHEET 4 OF 5	THIRD ANGLE PROJECTION
SCALE: 1:22	

ALLITH MANUFACTURING COMPANY	
DESCRIPTION Series 752 Allith track system with Durand's metal-clad door for 52"w x 84"h opening, left hand	
SIZE B	P/N 416-10-250
REV.	



WALL PENETRATION HOLE CENTERS

REV.	DESCRIPTION	DATE	BY	APPR'D
REVISION				
THE INFORMATION CONTAINED IN THIS DRAWING IS THE SOLE PROPERTY OF SCOTT WILLO SOLUTION ANY REPRODUCTION IN PART OR WHOLE WITHOUT THE WRITTEN PERMISSION OF SWS IS STRICTLY PROHIBITED.				

UNLESS OTHERWISE SPECIFIED
DIMENSIONS ARE IN INCHES
TOLERANCES ARE:
.X= ±.030
.XX= ±.015
.XXX= ±.005
ANGULAR= ±1°
MACHINED SURFACES TO HAVE
125 RMS FINISH
CONCENTRICITY= ±.002 T.I.R.
BREAK ALL SHARP EDGES

COPYRIGHTED CAD GENERATED DRAWING, DO NOT MANUALLY UPDATE	
DRAWN BY HT	DRAWN DATE 25-04-2025
CHECKED BY	CHECKED BY
APPROVED BY	APPROVED DATE
SHEET 5 OF 5	THIRD ANGLE PROJECTION
SCALE: 1:50	

ALLITH MANUFACTURING COMPANY	
DESCRIPTION Series 752 Allith track system with Durand's metal-clad door for 52"w x 84"h opening, left hand	
SIZE B	P/N 416-10-250
REV.	