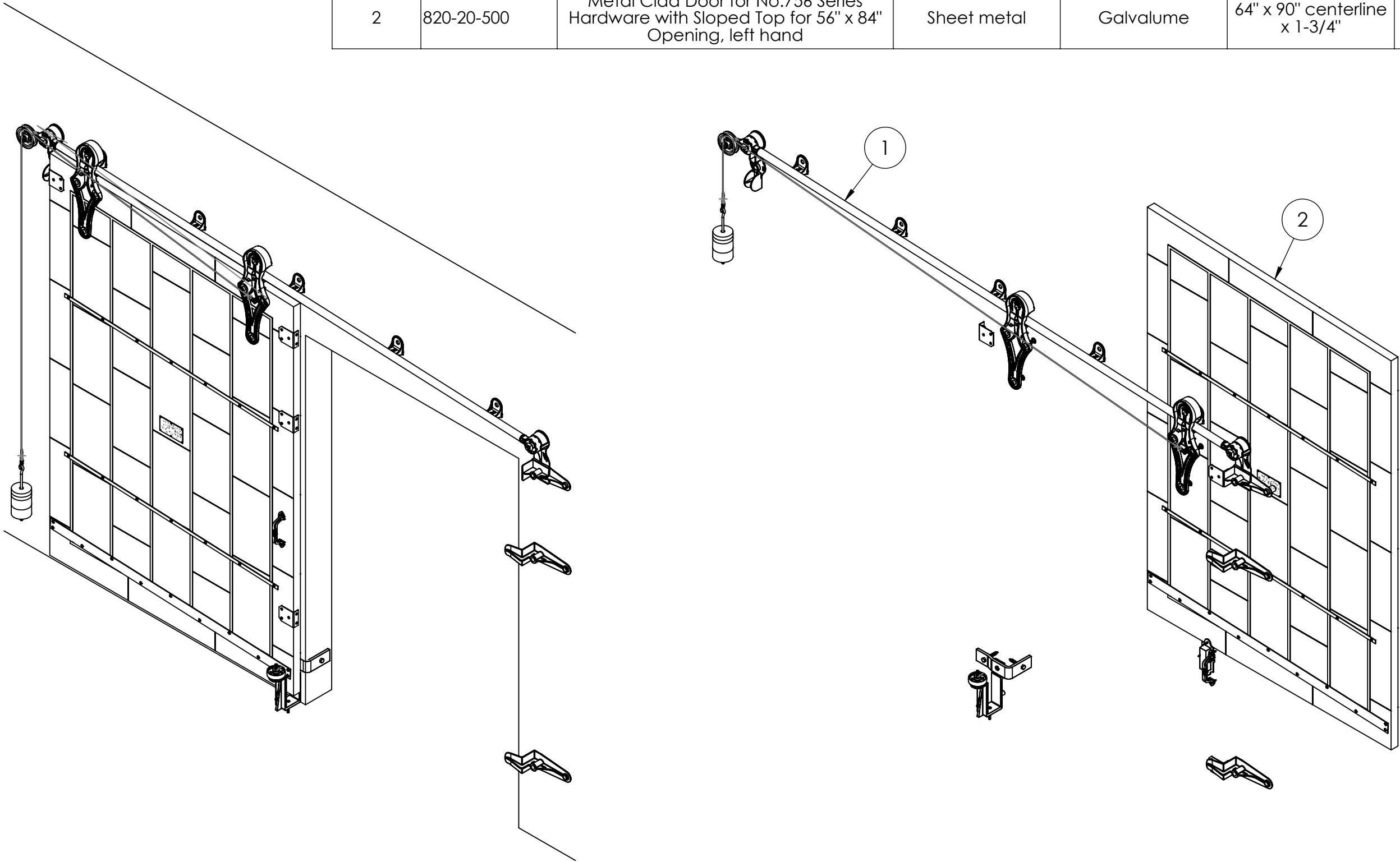


ITEM NO.	PART NUMBER	DESCRIPTION	MATERIAL	COLOR	SIZE	QTY.
1	316-10-270	No.756 Allith sliding fire door track system for 56" wide opening	Cast iron and steel	Black RAL 9005 (25-35 gloss)	0	1
2	820-20-500	Metal Clad Door for No.756 Series Hardware with Sloped Top for 56" x 84" Opening, left hand	Sheet metal	Galvalume	64" x 90" centerline x 1-3/4"	1



REV.	DESCRIPTION	DATE	BY	APPR'D
REVISION				
THE INFORMATION CONTAINED IN THIS DRAWING IS THE SOLE PROPERTY OF SCOTT WILLO SOLUTION ANY REPRODUCTION IN PART OR WHOLE WITHOUT THE WRITTEN PERMISSION OF SWS IS STRICTLY PROHIBITED.				

UNLESS OTHERWISE SPECIFIED
DIMENSIONS ARE IN INCHES
TOLERANCES ARE:
.X= ±.030
.XX= ±.015
.XXX= ±.005
ANGULAR= ±1°
MACHINED SURFACES TO HAVE
125 RMS FINISH
CONCENTRICITY= ±.002 T.I.R.
BREAK ALL SHARP EDGES

COPYRIGHTED CAD GENERATED DRAWING. DO NOT MANUALLY UPDATE	
DRAWN BY HT	DRAWN DATE 25-04-2025
CHECKED BY	CHECKED BY
APPROVED BY	APPROVED DATE
SHEET 1 OF 5	THIRD ANGLE PROJECTION
SCALE: 1:20	

ALLITH MANUFACTURING COMPANY	
DESCRIPTION Series 756 Allith track system with Durand's metal-clad door for 56" w x 84" h opening, left hand	
SIZE B	P/N 416-10-270
REV.	



3/4 PER

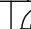
56.000
CLEAR OPENING

B

OPEN CONDITION

REV.	DESCRIPTION	DATE	BY	APP'D
REVISION				
THE INFORMATION CONTAINED IN THIS DRAWING IS THE SOLE PROPERTY OF SCOTT WILLO SOLUTION ANY REPRODUCTION IN PART OR WHOLE WITHOUT THE WRITTEN PERMISSION OF SWS IS STRICTLY PROHIBITED.				

UNLESS OTHERWISE SPECIFIED
DIMENSIONS ARE IN INCHES
TOLERANCES ARE:
.X= $\pm .030$
.XX= $\pm .015$
.XXX= $\pm .005$
ANGULAR= $\pm 1^\circ$
MACHINED SURFACES TO HAVE
125 RMS FINISH
CONCENTRICITY= $\pm .002$ T.I.R.
BREAK ALL SHARP EDGES

COPYRIGHTED CAD GENERATED DRAWING. DO NOT MANUALLY UPDATE	
DRAWN BY HT	DRAWN DATE 25-04-2025
CHECKED BY	CHECKED BY
APPROVED BY	APPROVED DATE
SHEET 2 OF 5	 SCALE: 1:24 THIRD ANGLE PROJECTION

**ALLITH
MANUFACTURING
COMPANY**

DESCRIPTION	
Series 756 Allith track system with Durand's metal-clad door for 56"w x 84"h opening, left hand	

SIZE B	P/N 416-10-270	REV.
-----------	--------------------------	------

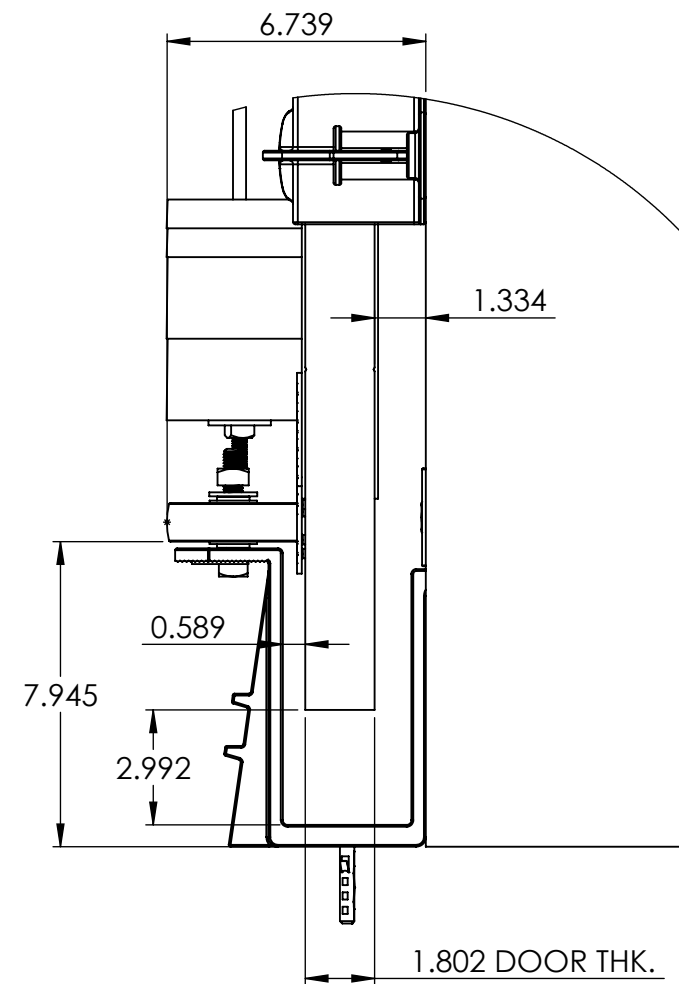


Architectural drawing of a window unit. The drawing shows a grid of window panes. Key dimensions and labels include:

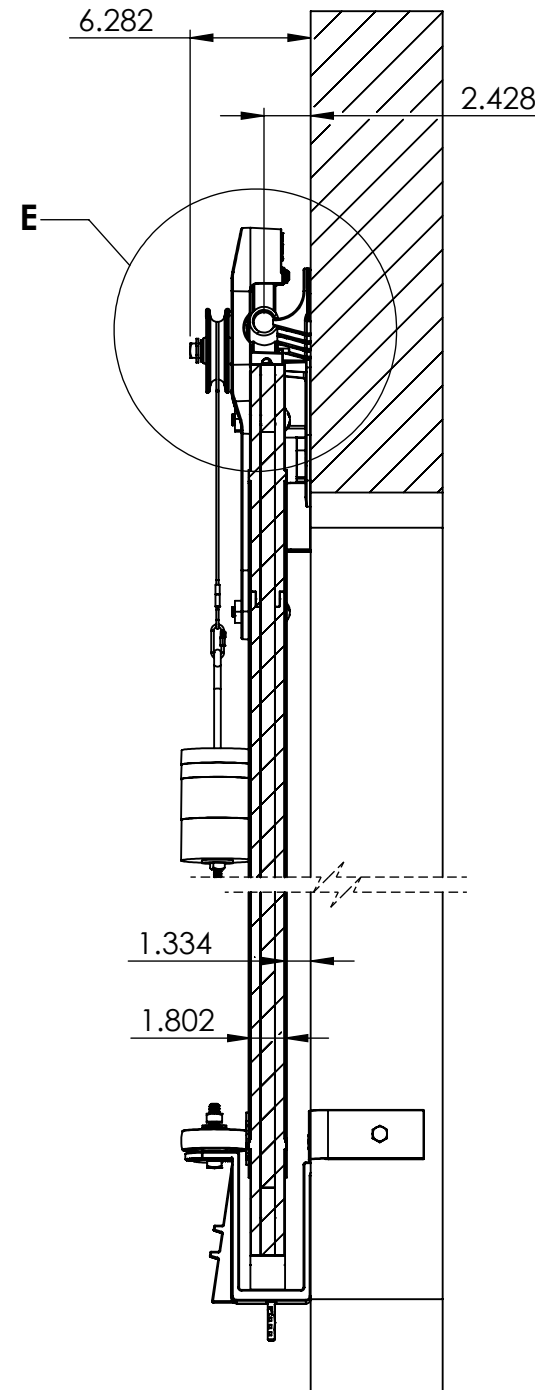
- 2.000**: Dimension for the width of the window frame or mullion.
- 40.000 AFF.**: Dimension for the height of the window frame or mullion.
- 56.000 FINISHED OPENING**: Dimension for the width of the finished opening.

CLOSED CONDITION

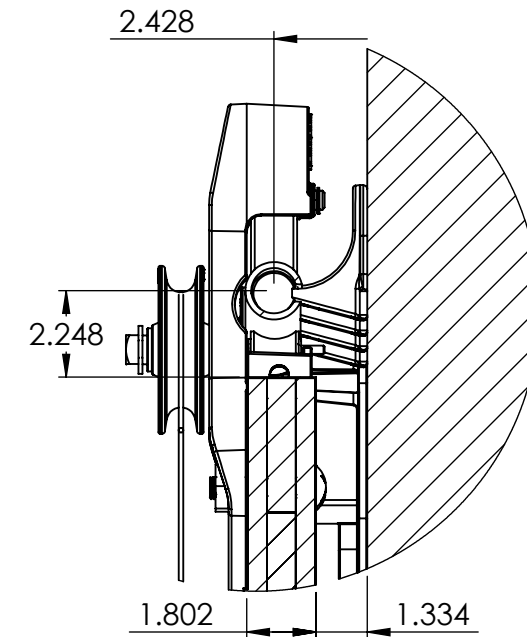
						<p>UNLESS OTHERWISE SPECIFIED DIMENSIONS ARE IN INCHES TOLERANCES ARE: .X= ±.030 .XX= ±.015 .XXX= ±.005 ANGULAR= ±1° MACHINED SURFACES TO HAVE 125 RMS FINISH CONCENTRICITY= ±.002 T.I.R. BREAK ALL SHARP EDGES</p>	<p>COPYRIGHTED CAD GENERATED DRAWING, DO NOT MANUALLY UPDATE</p> <table><tr><td>DRAWN BY</td><td>DRAWN DATE</td></tr><tr><td>HT</td><td>25-04-2025</td></tr><tr><td>CHECKED BY</td><td>CHECKED BY</td></tr><tr><td>APPROVED BY</td><td>APPROVED DATE</td></tr></table>	DRAWN BY	DRAWN DATE	HT	25-04-2025	CHECKED BY	CHECKED BY	APPROVED BY	APPROVED DATE	<p>ALLITH MANUFACTURING COMPANY</p>		<p>DESCRIPTION</p> <p>Series 756 Allith track system with Durand's metal-clad door for 56" w x 84"h opening, left hand</p>		<p>SIZE B</p>	<p>P/N 416-10-270</p>	<p>REV.</p>																																																																																																																																																																																																																																																																																																																																																																																																																																																																																																																																																																																																																																																																																																																																																																																																																																																																																																																																																																																																																																																																																																																																																																																																																																																																																																																																				
DRAWN BY	DRAWN DATE																																																																																																																																																																																																																																																																																																																																																																																																																																																																																																																																																																																																																																																																																																																																																																																																																																																																																																																																																																																																																																																																																																																																																																																																																																																																																																																																																									
HT	25-04-2025																																																																																																																																																																																																																																																																																																																																																																																																																																																																																																																																																																																																																																																																																																																																																																																																																																																																																																																																																																																																																																																																																																																																																																																																																																																																																																																																																									
CHECKED BY	CHECKED BY																																																																																																																																																																																																																																																																																																																																																																																																																																																																																																																																																																																																																																																																																																																																																																																																																																																																																																																																																																																																																																																																																																																																																																																																																																																																																																																																																									
APPROVED BY	APPROVED DATE																																																																																																																																																																																																																																																																																																																																																																																																																																																																																																																																																																																																																																																																																																																																																																																																																																																																																																																																																																																																																																																																																																																																																																																																																																																																																																																																																									
																																																																																																																																																																																																																																																																																																																																																																																																																																																																																																																																																																																																																																																																																																																																																																																																																																																																																																																																																																																																																																																																																																																																																																																																																																																																																																																																																										</



DETAIL B
SCALE 1 : 5



SECTION D-D
SCALE 1 : 10



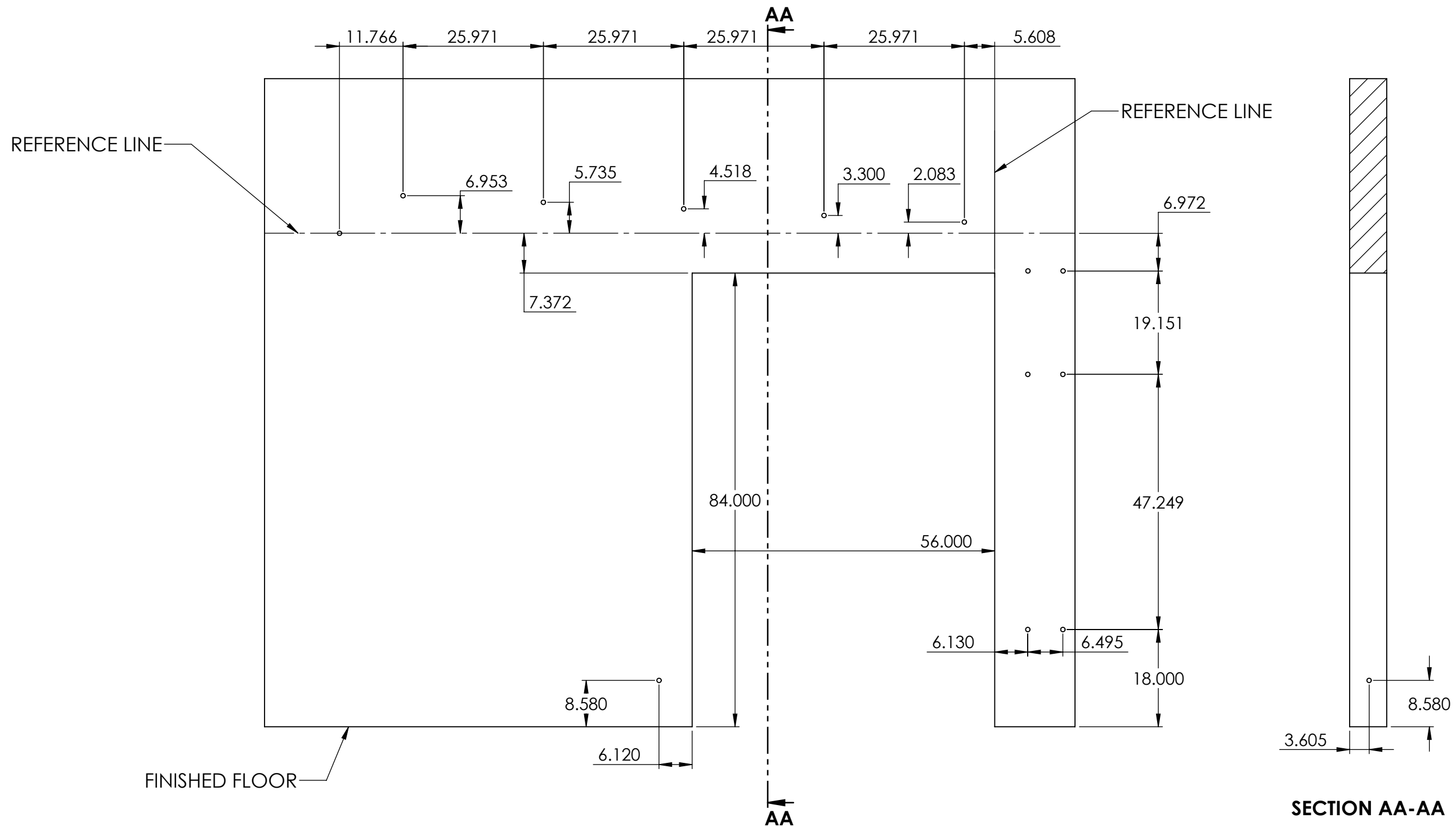
DETAIL E
SCALE 1 : 5

REV.	DESCRIPTION	DATE	BY	APPR'D
REVISION				
THE INFORMATION CONTAINED IN THIS DRAWING IS THE SOLE PROPERTY OF SCOTT WILLO SOLUTION ANY REPRODUCTION IN PART OR WHOLE WITHOUT THE WRITTEN PERMISSION OF SWS IS STRICTLY PROHIBITED.				

UNLESS OTHERWISE SPECIFIED
DIMENSIONS ARE IN INCHES
TOLERANCES ARE:
.X= $\pm .030$
.XX= $\pm .015$
.XXX= $\pm .005$
ANGULAR= $\pm 1^\circ$
MACHINED SURFACES TO HAVE
125 RMS FINISH
CONCENTRICITY= $\pm .002$ T.I.R.
BREAK ALL SHARP EDGES

COPYRIGHTED CAD GENERATED DRAWING, DO NOT MANUALLY UPDATE	
DRAWN BY HT	DRAWN DATE 25-04-2025
CHECKED BY	CHECKED BY
APPROVED BY	APPROVED DATE
SHEET 4 OF 5	THIRD ANGLE PROJECTION
SCALE: 1:22	

ALLITH MANUFACTURING COMPANY	
DESCRIPTION Series 756 Allith track system with Durand's metal-clad door for 56"w x 84"h opening, left hand	
SIZE B	P/N 416-10-270
REV.	



WALL PENETRATION HOLE CENTERS

REV.	DESCRIPTION	DATE	BY	APPR'D
REVISION				
THE INFORMATION CONTAINED IN THIS DRAWING IS THE SOLE PROPERTY OF SCOTT WILLO SOLUTION ANY REPRODUCTION IN PART OR WHOLE WITHOUT THE WRITTEN PERMISSION OF SWS IS STRICTLY PROHIBITED.				

UNLESS OTHERWISE SPECIFIED
DIMENSIONS ARE IN INCHES
TOLERANCES ARE:
.X= ±.030
.XX= ±.015
.XXX= ±.005
ANGULAR= ±1°
MACHINED SURFACES TO HAVE
125 RMS FINISH
CONCENTRICITY= ±.002 T.I.R.
BREAK ALL SHARP EDGES

COPYRIGHTED CAD GENERATED DRAWING, DO NOT MANUALLY UPDATE	
DRAWN BY HT	DRAWN DATE 25-04-2025
CHECKED BY	CHECKED BY
APPROVED BY	APPROVED DATE
SHEET 5 OF 5	THIRD ANGLE PROJECTION
SCALE: 1:50	

ALLITH MANUFACTURING COMPANY	
DESCRIPTION Series 756 Allith track system with Durand's metal-clad door for 56"w x 84"h opening, left hand	
SIZE B	P/N 416-10-270
REV.	