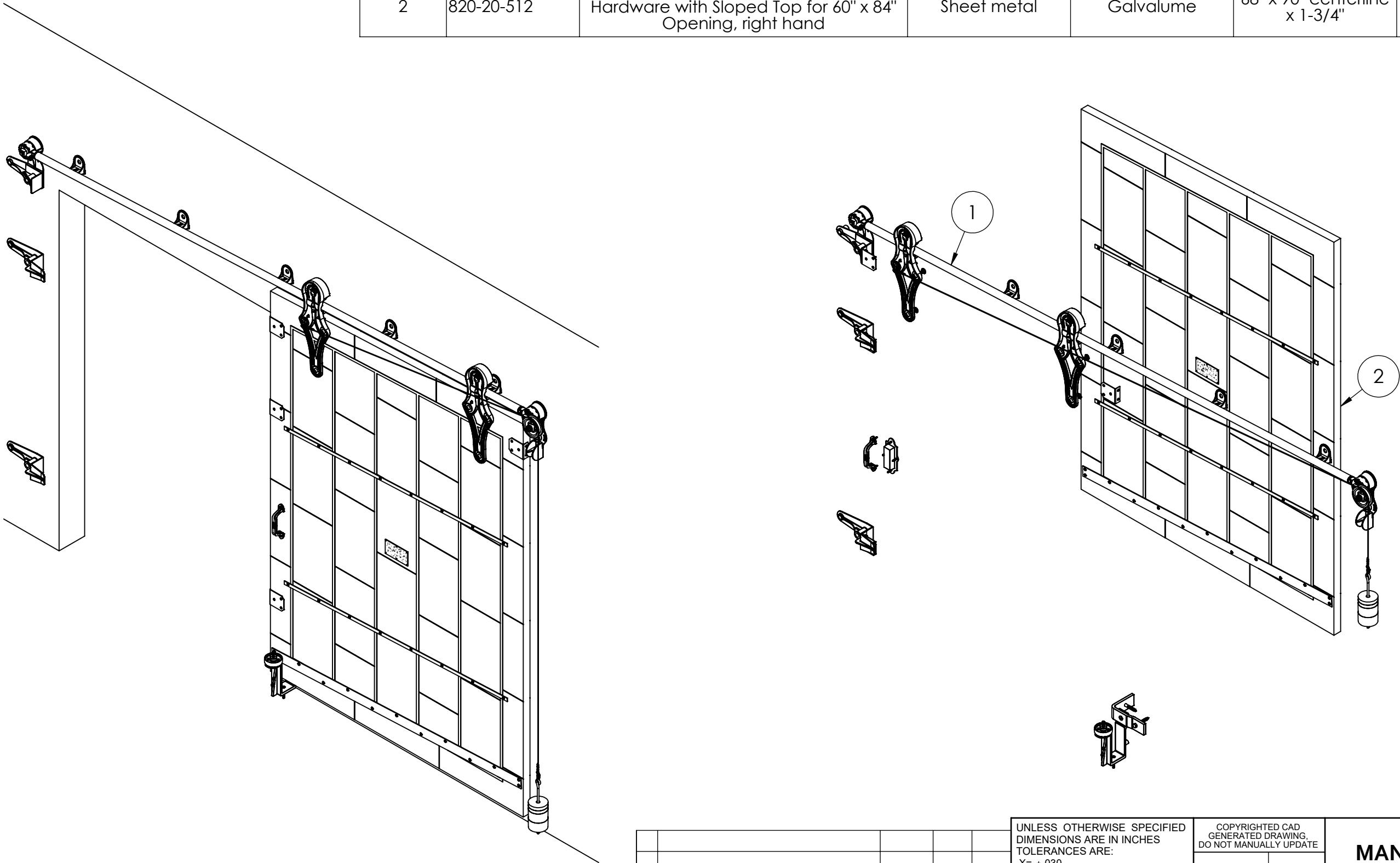


ITEM NO.	PART NUMBER	DESCRIPTION	MATERIAL	COLOR	SIZE	QTY.
1	316-10-290	No.760 Allith sliding fire door track system for 60" wide opening	Cast iron and steel	Black RAL 9005 (25-35 gloss)	0	1
2	820-20-512	Metal Clad Door for No.760 Series Hardware with Sloped Top for 60" x 84" Opening, right hand	Sheet metal	Galvalume	68" x 90" centerline x 1-3/4"	1



REV.	DESCRIPTION	DATE	BY	APPR'D
REVISION				
THE INFORMATION CONTAINED IN THIS DRAWING IS THE SOLE PROPERTY OF SCOTT WILLO SOLUTION ANY REPRODUCTION IN PART OR WHOLE WITHOUT THE WRITTEN PERMISSION OF SWS IS STRICTLY PROHIBITED.				

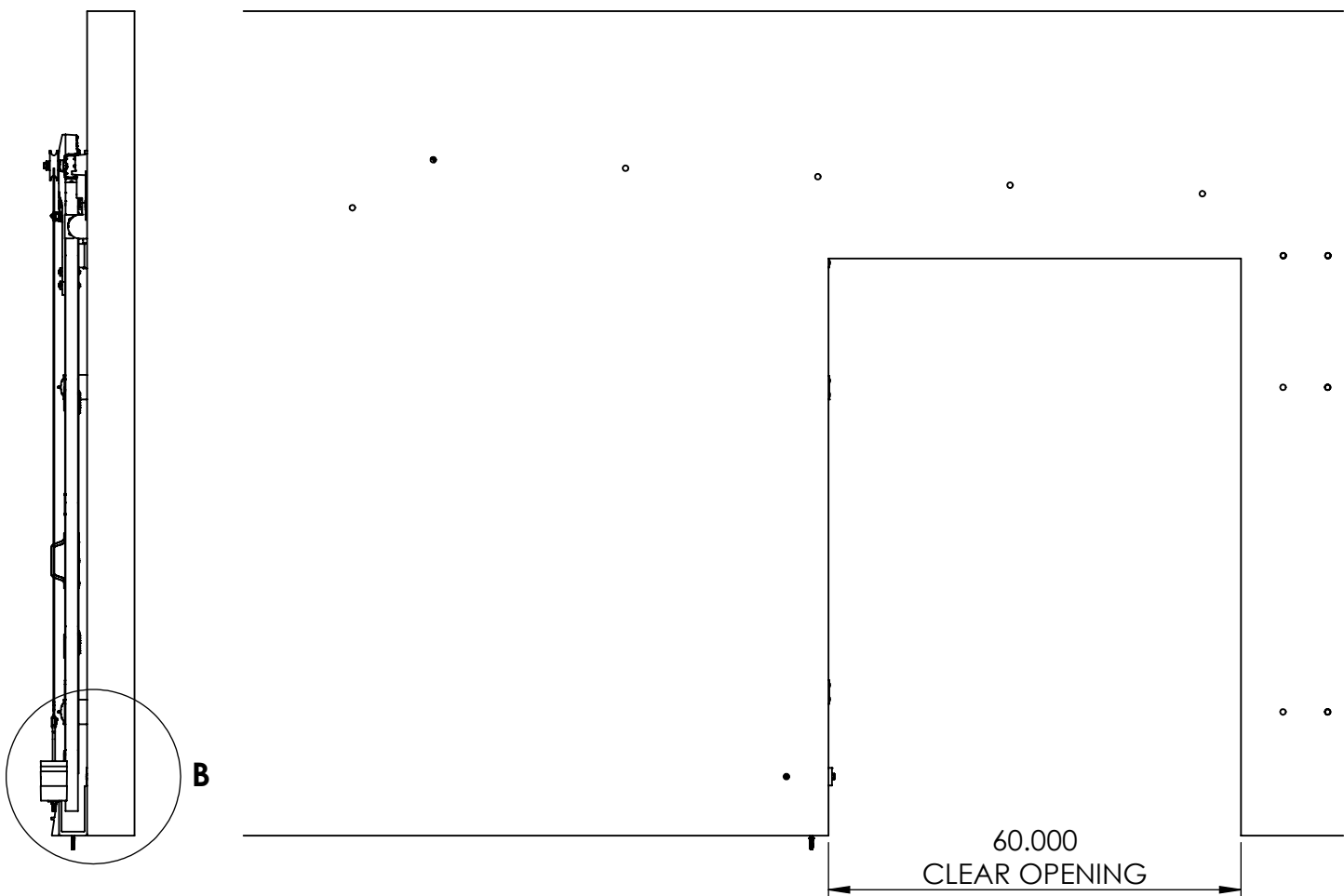
UNLESS OTHERWISE SPECIFIED
DIMENSIONS ARE IN INCHES
TOLERANCES ARE:
.X= ±.030
.XX= ±.015
.XXX= ±.005
ANGULAR= ±1°
MACHINED SURFACES TO HAVE
125 RMS FINISH
CONCENTRICITY= ±.002 T.I.R.
BREAK ALL SHARP EDGES

COPYRIGHTED CAD GENERATED DRAWING. DO NOT MANUALLY UPDATE	
DRAWN BY HT	DRAWN DATE 06-05-2025
CHECKED BY	CHECKED BY
APPROVED BY	APPROVED DATE
SHEET 1 OF 5	THIRD ANGLE PROJECTION
SCALE: 1:20	

ALLITH MANUFACTURING COMPANY	
DESCRIPTION Series 760 Allith track system with Durand's metal-clad door for 60"w x 84"h opening, right hand	
SIZE B	P/N 416-10-292
REV.	

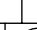


INSIDE DOOR OPEN POSITION



REV.	DESCRIPTION	DATE	BY	APPR'D
REVISION				
THE INFORMATION CONTAINED IN THIS DRAWING IS THE SOLE PROPERTY OF SCOTT WILLO SOLUTION ANY REPRODUCTION IN PART OR WHOLE WITHOUT THE WRITTEN PERMISSION OF SWS IS STRICTLY PROHIBITED.				

UNLESS OTHERWISE SPECIFIED
DIMENSIONS ARE IN INCHES
TOLERANCES ARE:
.X= $\pm .030$
.XX= $\pm .015$
.XXX= $\pm .005$
ANGULAR= $\pm 1^\circ$
MACHINED SURFACES TO HAVE
125 RMS FINISH
CONCENTRICITY= $\pm .002$ T.I.R.
BREAK ALL SHARP EDGES

<p align="center">COPYRIGHTED CAD GENERATED DRAWING DO NOT MANUALLY UPDATE</p>	
DRAWN BY	DRAWN DATE
HT	06-05-2025
CHECKED BY	CHECKED BY
APPROVED BY	APPROVED DATE
SHEET 2 OF 5	 <p align="center">THIRD ANGLE PROJECTION</p>
SCALE: 1:26	

**ALLITH
MANUFACTURING
COMPANY**

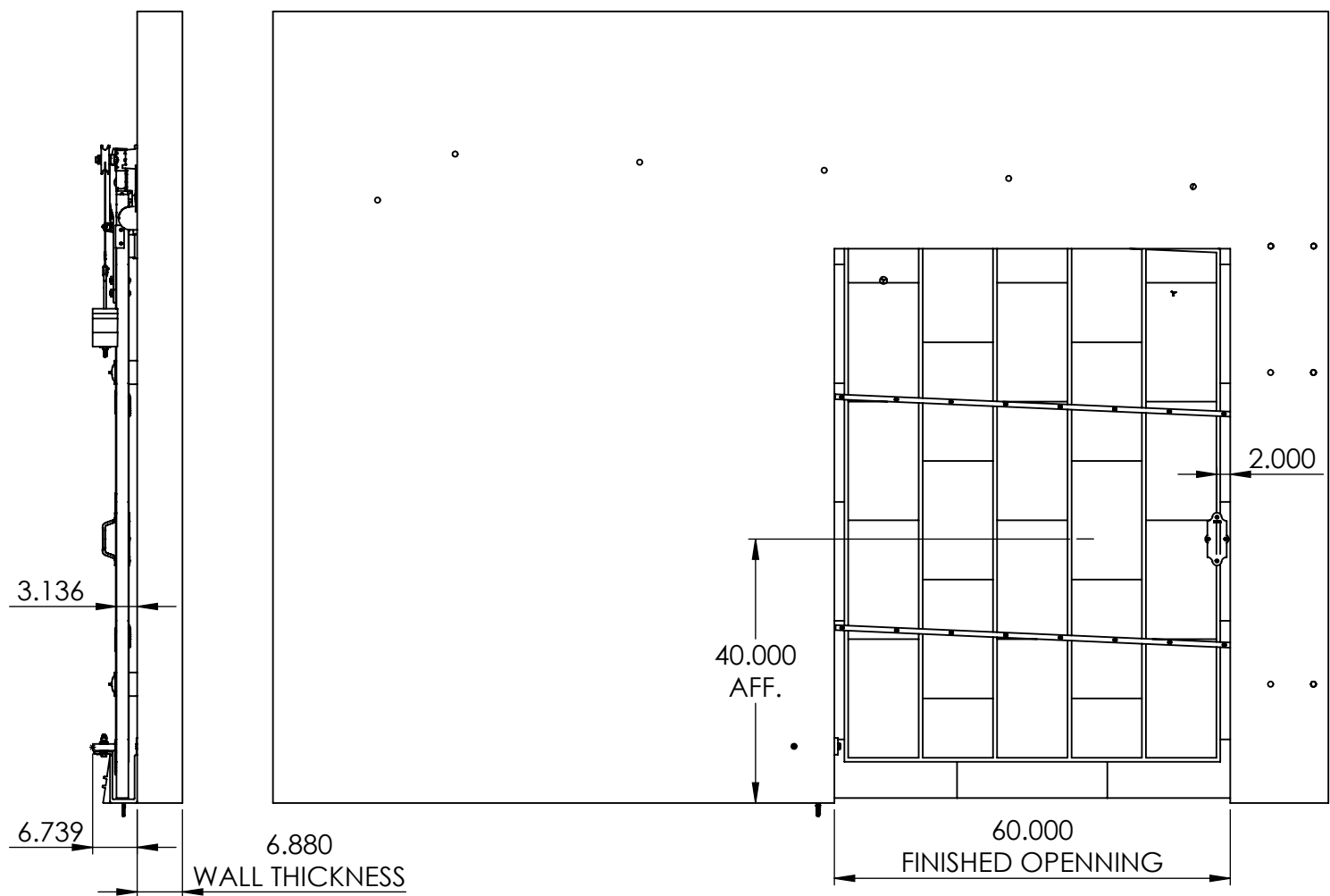
DESCRIPTION
Series 760 Allith track system with Durand's metal-clad door for 60"w x 84"h opening, right hand

SIZE	P/N
B	416-10-292


REV.

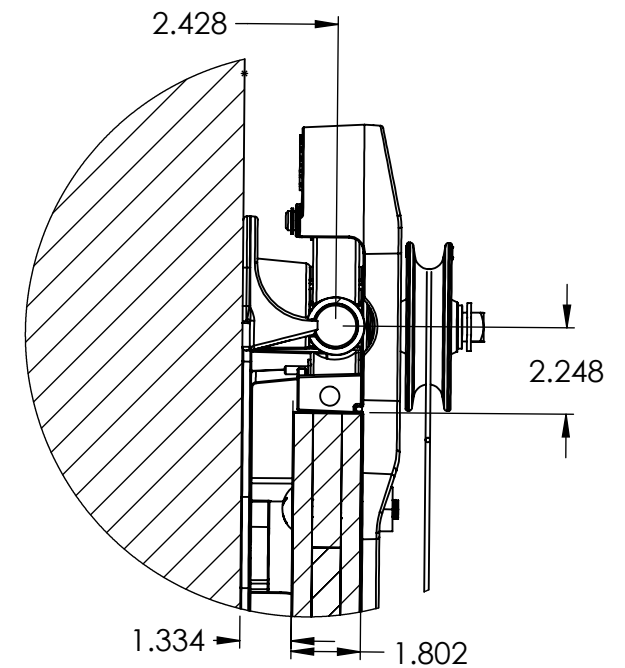
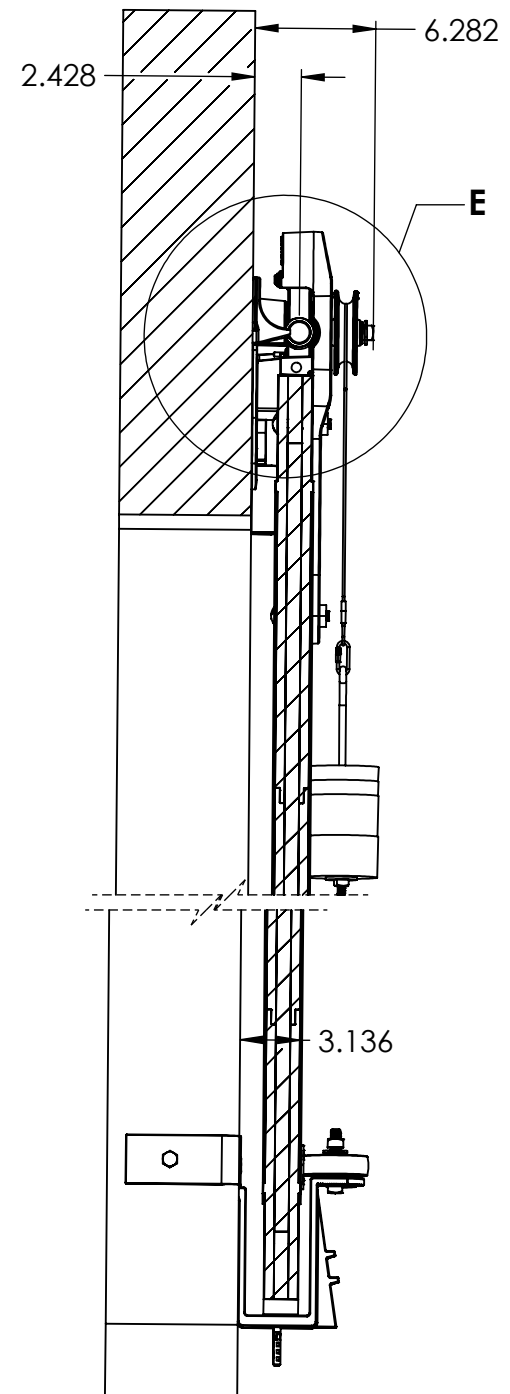
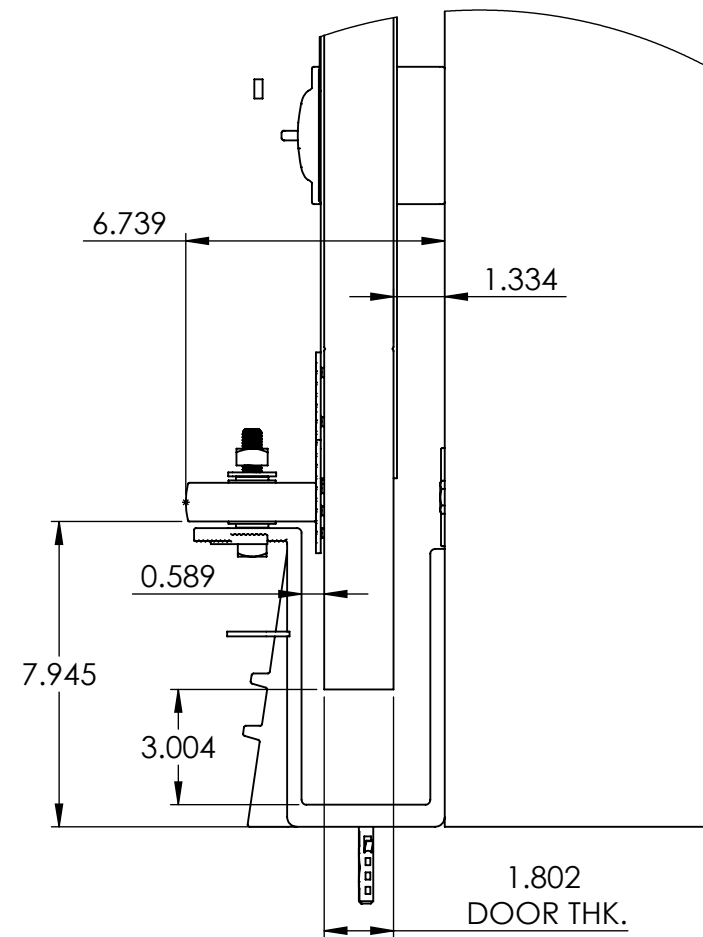


INSIDE DOOR CLOSED POSITION



CLOSED CONDITION

					DIMENSIONS ARE IN INCHES TOLERANCES ARE: X= ±.030 .XX= ±.015 .XXX= ±.005 ANGULAR= ±1° MACHINED SURFACES TO HAVE 125 RMS FINISH CONCENTRICITY= ±.002 T.I.R. BREAK ALL SHARP EDGES		GENERATED DRAWING, DO NOT MANUALLY UPDATE		ALLIETH MANUFACTURING COMPANY						
REV.					DESCRIPTION		DATE		BY		APPR'D		DESCRIPTION Series 760 Allith track system with Durand's metal-clad door for 60"x x 84"h opening, right hand		
REVISION															
THE INFORMATION CONTAINED IN THIS DRAWING IS THE SOLE PROPERTY OF SCOTT WILLO SOLUTION ANY REPRODUCTION IN PART OR WHOLE WITHOUT THE WRITTEN PERMISSION OF SWS IS STRICTLY PROHIBITED.															
					SHEET 3 OF 5		 THIRD ANGLE PROJECTION		SIZE		P/N		REV.		
					SCALE: 1:26				B		416-10-292				

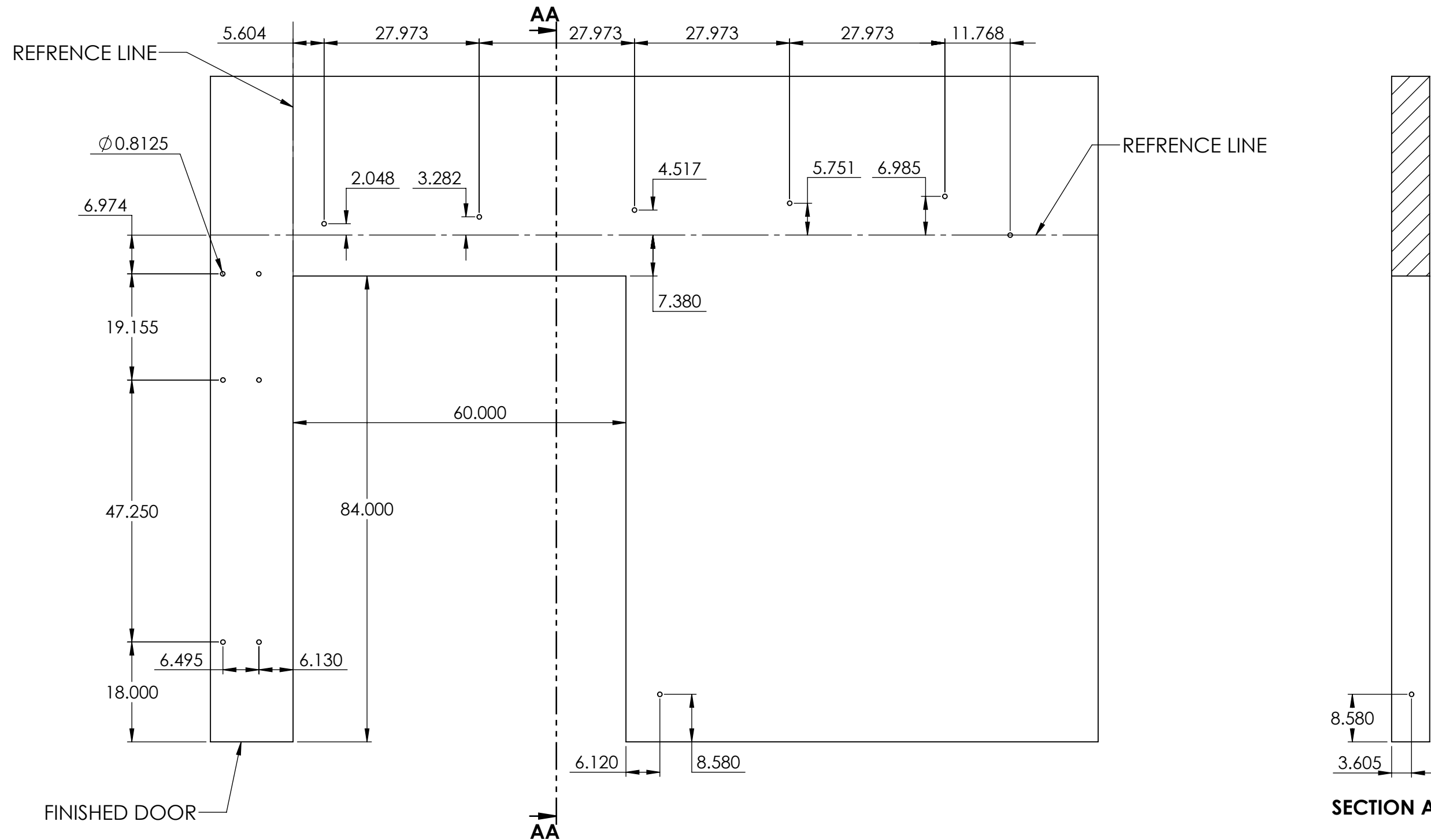


REV.	DESCRIPTION	DATE	BY	APPR'D
REVISION				
THE INFORMATION CONTAINED IN THIS DRAWING IS THE SOLE PROPERTY OF SCOTT WILLO SOLUTION ANY REPRODUCTION IN PART OR WHOLE WITHOUT THE WRITTEN PERMISSION OF SWS IS STRICTLY PROHIBITED.				

UNLESS OTHERWISE SPECIFIED
DIMENSIONS ARE IN INCHES
TOLERANCES ARE:
.X= ± 0.030
.XX= ± 0.015
.XXX= ± 0.005
ANGULAR= $\pm 1^\circ$
MACHINED SURFACES TO HAVE
125 RMS FINISH
CONCENTRICITY= ± 0.002 T.I.R.
BREAK ALL SHARP EDGES

COPYRIGHTED CAD GENERATED DRAWING. DO NOT MANUALLY UPDATE	
DRAWN BY HT	DRAWN DATE 06-05-2025
CHECKED BY	CHECKED BY
APPROVED BY	APPROVED DATE
SHEET 4 OF 5	THIRD ANGLE PROJECTION
SCALE: 1:22	

ALLITH MANUFACTURING COMPANY	
DESCRIPTION Series 760 Allith track system with Durand's metal-clad door for 60"w x 84"h opening, right hand	
SIZE B	P/N 416-10-292
REV.	



WALL PENETRATION HOLE CENTERS

REV.	DESCRIPTION	DATE	BY	APPR'D
REVISION				
THE INFORMATION CONTAINED IN THIS DRAWING IS THE SOLE PROPERTY OF SCOTT WILLO SOLUTION ANY REPRODUCTION IN PART OR WHOLE WITHOUT THE WRITTEN PERMISSION OF SWS IS STRICTLY PROHIBITED.				

UNLESS OTHERWISE SPECIFIED
DIMENSIONS ARE IN INCHES
TOLERANCES ARE:
.X= $\pm .030$
.XX= $\pm .015$
.XXX= $\pm .005$
ANGULAR= $\pm 1^\circ$
MACHINED SURFACES TO HAVE
125 RMS FINISH
CONCENTRICITY= $\pm .002$ T.I.R.
BREAK ALL SHARP EDGES

COPYRIGHTED CAD GENERATED DRAWING. DO NOT MANUALLY UPDATE	
DRAWN BY HT	DRAWN DATE 06-05-2025
CHECKED BY	CHECKED BY
APPROVED BY	APPROVED DATE
SHEET 5 OF 5	THIRD ANGLE PROJECTION
SCALE: 1:20	

ALLITH MANUFACTURING COMPANY	
DESCRIPTION Series 760 Allith track system with Durand's metal-clad door for 60"w x 84"h opening, right hand	
SIZE B	P/N 416-10-292
REV.	