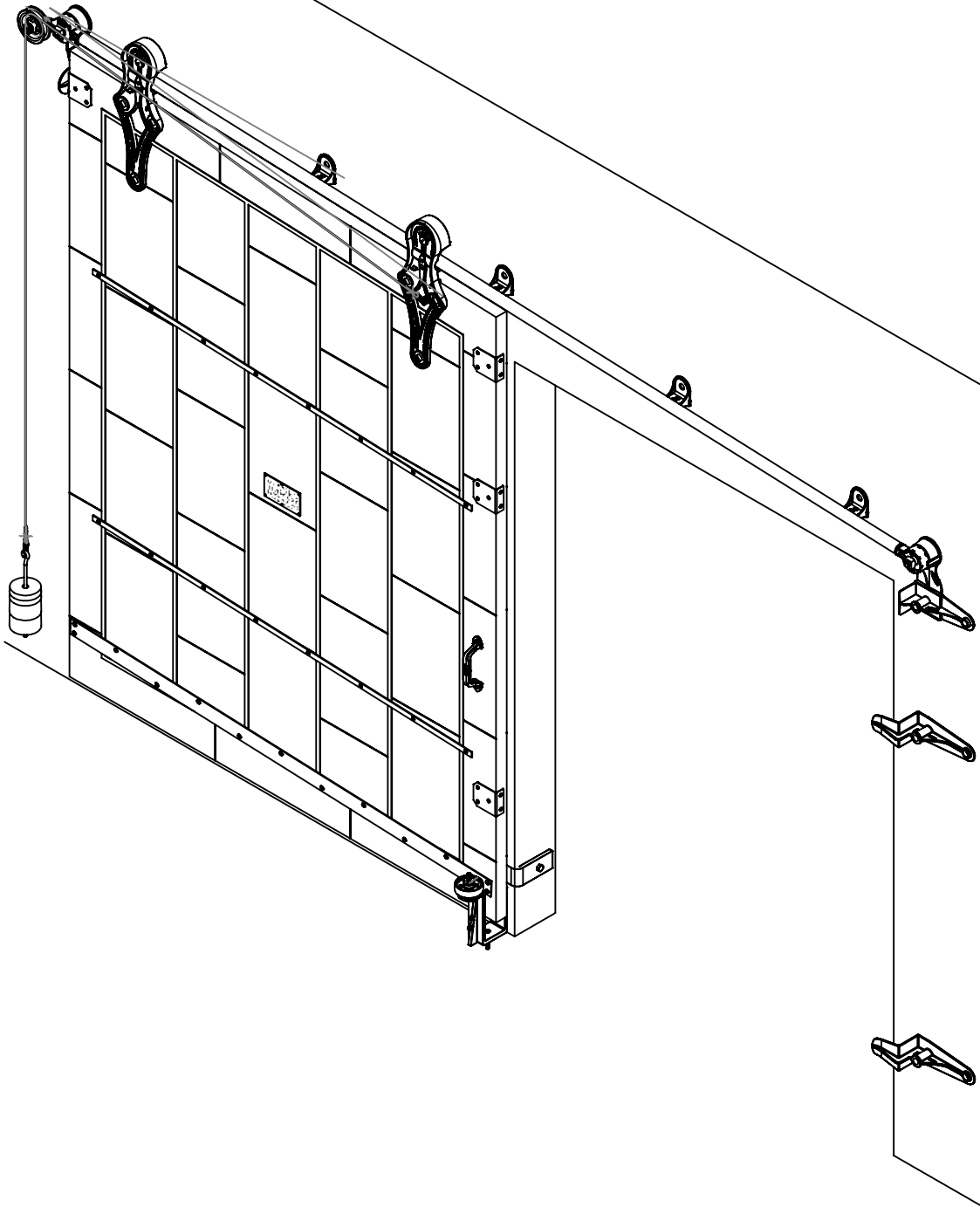


ITEM NO.	PART NUMBER	DESCRIPTION	MATERIAL	COLOR	SIZE	QTY.
1	316-10-310	No.764 Allith sliding fire door track system for 64" wide opening	Cast iron and steel	Black RAL 9005 (25-35 gloss)	0	1
2	820-20-520	Metal Clad Door for No.764 Series Hardware with Sloped Top for 64" x 84" Opening, left hand	Sheet metal	Galvalume	72" x 90" centerline x 1-3/4"	1



REV.	DESCRIPTION	DATE	BY	APPR'D
REVISION				
THE INFORMATION CONTAINED IN THIS DRAWING IS THE SOLE PROPERTY OF SCOTT WILLO SOLUTION ANY REPRODUCTION IN PART OR WHOLE WITHOUT THE WRITTEN PERMISSION OF SWS IS STRICTLY PROHIBITED.				

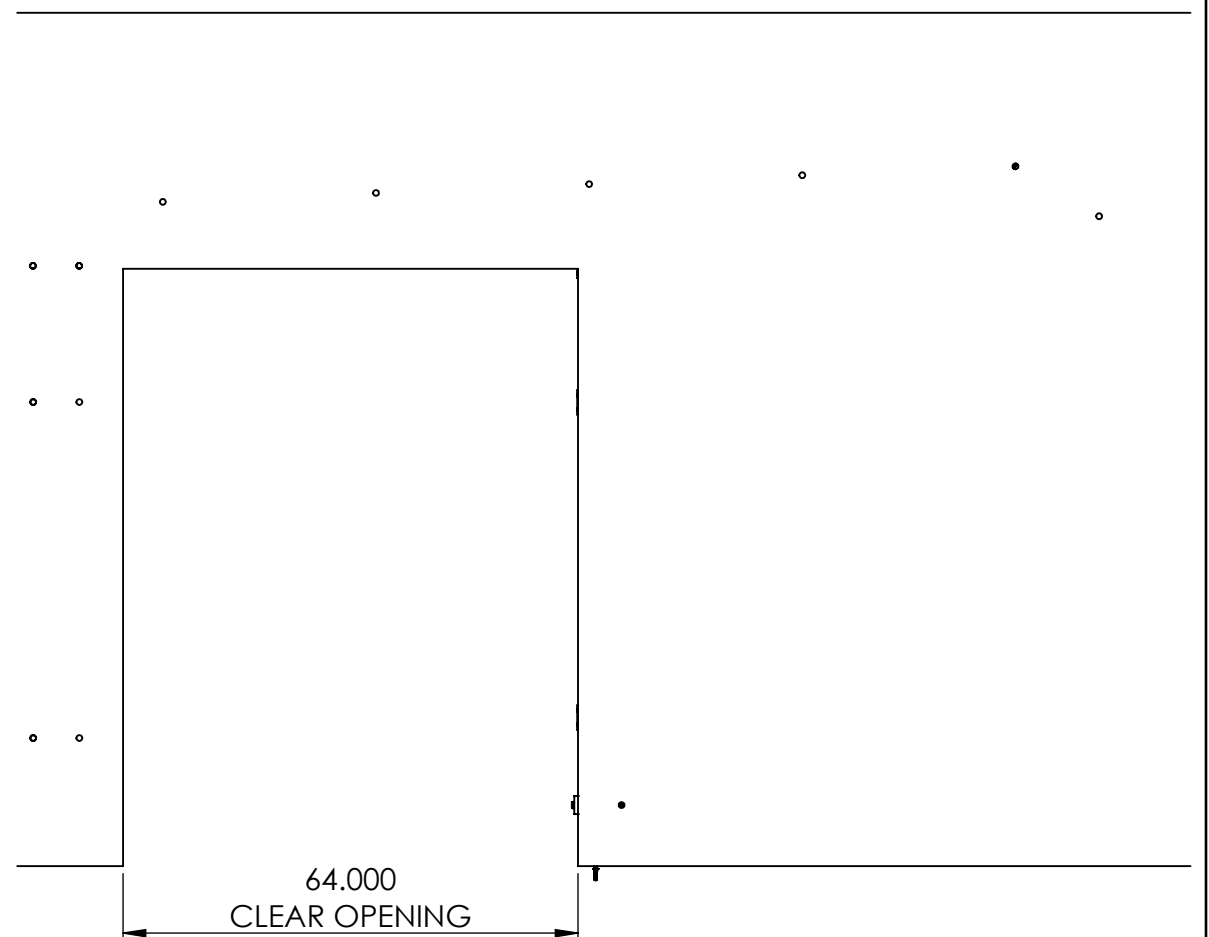
UNLESS OTHERWISE SPECIFIED
DIMENSIONS ARE IN INCHES
TOLERANCES ARE:
.X= ±.030
.XX= ±.015
.XXX= ±.005
ANGULAR= ±1°
MACHINED SURFACES TO HAVE
125 RMS FINISH
CONCENTRICITY= ±.002 T.I.R.
BREAK ALL SHARP EDGES

COPYRIGHTED CAD GENERATED DRAWING. DO NOT MANUALLY UPDATE	
DRAWN BY HT	DRAWN DATE 06-05-2025
CHECKED BY	CHECKED BY
APPROVED BY	APPROVED DATE
SHEET 1 OF 5	THIRD ANGLE PROJECTION
SCALE: 1:20	


ALLITH MANUFACTURING COMPANY	
DESCRIPTION Series 764 Allith track system with Durand's metal-clad door for 64"w x 84"h opening, left hand	
SIZE B	P/N 416-10-310
REV.	

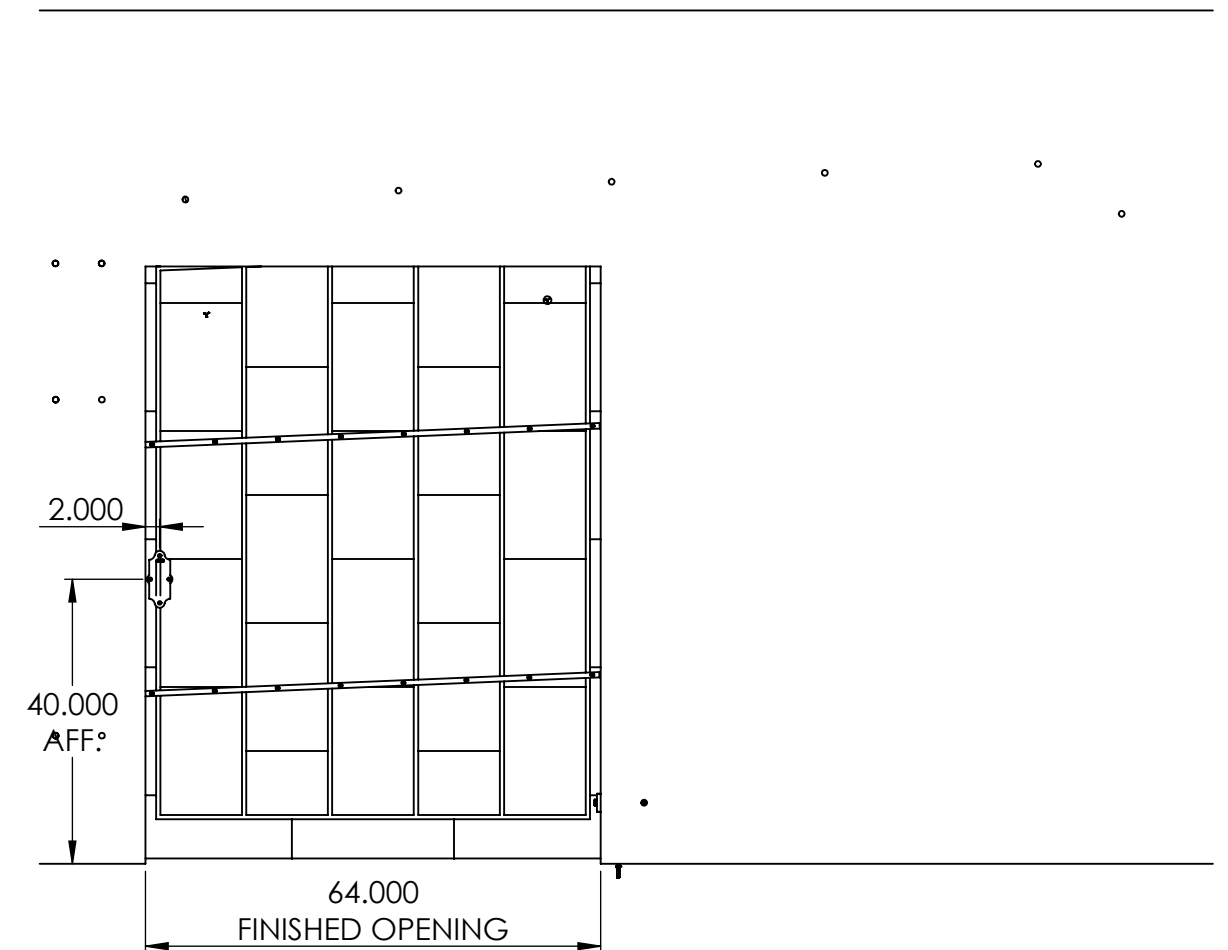


INSIDE DOOR OPEN POSITION

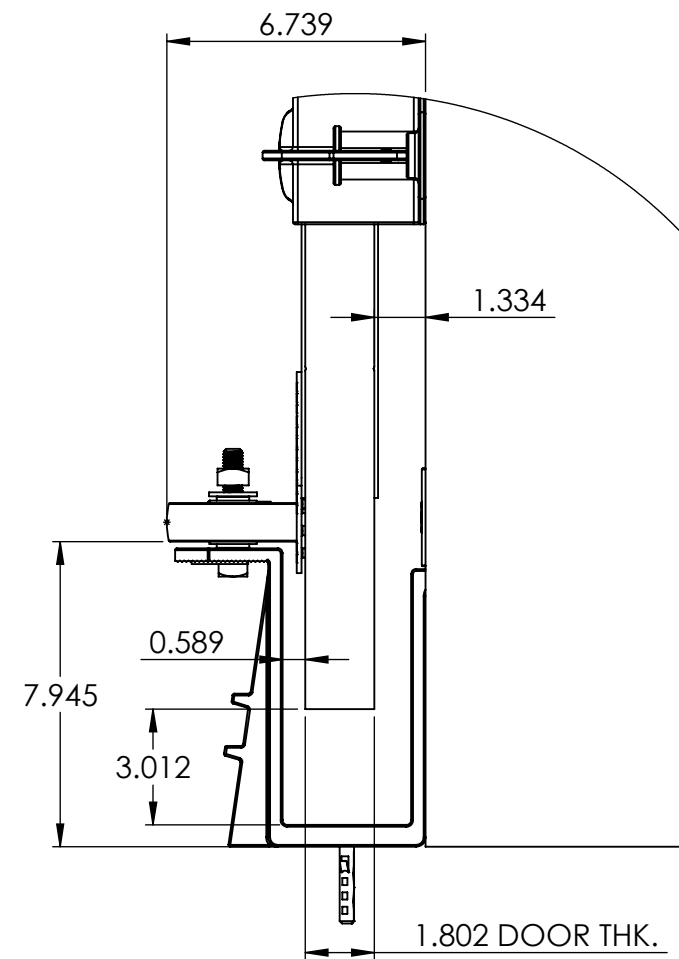


OPEN CONDITION

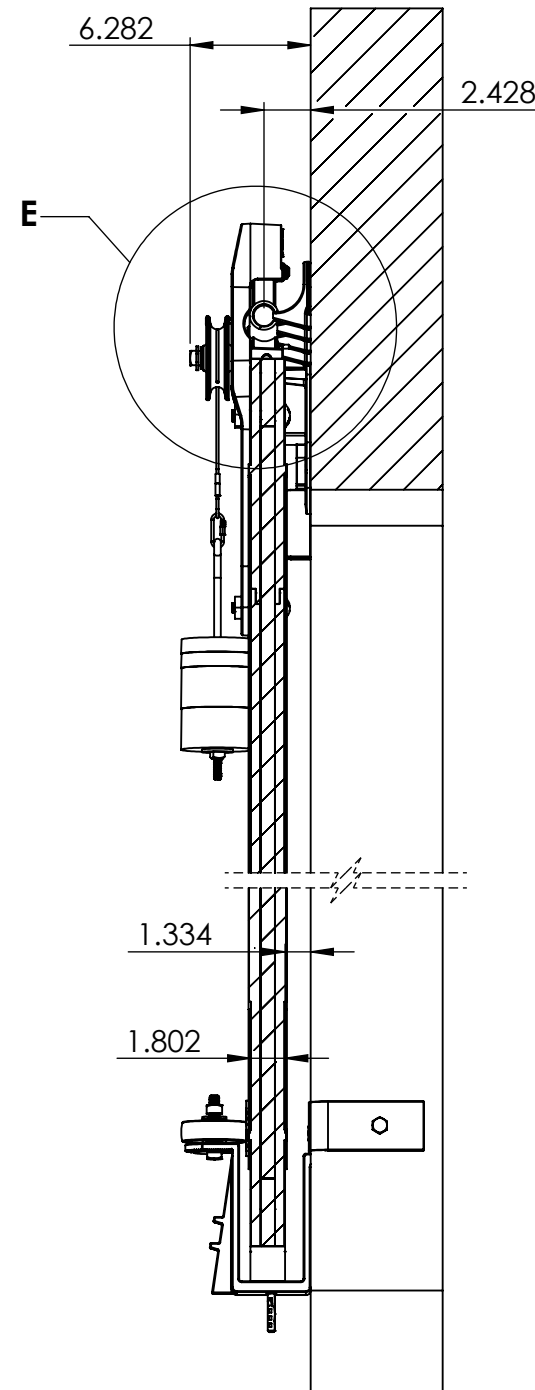
							COPYRIGHTED CAD GENERATED DRAWING, DO NOT MANUALLY UPDATE	<div style="text-align:center;">ALLITH MANUFACTURING COMPANY</div>	
						DRAWN BY	DRAWN DATE		
						HT	06-05-2025		
						CHECKED BY	CHECKED BY	DESCRIPTION	
						APPROVED BY	APPROVED DATE	Series 764 Allith track system with Durand's metal-clad door for 64"x w x 84"h opening, left hand	
						SHEET 2 OF 5		SIZE P/N	
						SCALE: 1:27		B	REV.
								416-10-310	



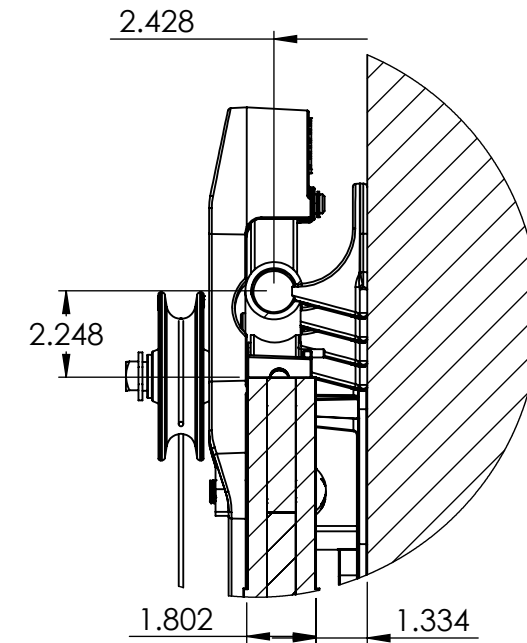
SIZE B	P/N 416-10-310	REV.
-----------	--------------------------	------



DETAIL B
SCALE 1 : 5



SECTION D-D
SCALE 1 : 10



DETAIL E
SCALE 1 : 5

REV.	DESCRIPTION	DATE	BY	APPR'D
REVISION				
THE INFORMATION CONTAINED IN THIS DRAWING IS THE SOLE PROPERTY OF SCOTT WILLO SOLUTION ANY REPRODUCTION IN PART OR WHOLE WITHOUT THE WRITTEN PERMISSION OF SWS IS STRICTLY PROHIBITED.				

UNLESS OTHERWISE SPECIFIED
DIMENSIONS ARE IN INCHES
TOLERANCES ARE:
.X= $\pm .030$
.XX= $\pm .015$
.XXX= $\pm .005$
ANGULAR= $\pm 1^\circ$
MACHINED SURFACES TO HAVE
125 RMS FINISH
CONCENTRICITY= $\pm .002$ T.I.R.
BREAK ALL SHARP EDGES

COPYRIGHTED CAD GENERATED DRAWING, DO NOT MANUALLY UPDATE	
DRAWN BY HT	DRAWN DATE 06-05-2025
CHECKED BY	CHECKED BY
APPROVED BY	APPROVED DATE
SHEET 4 OF 5	THIRD ANGLE PROJECTION
SCALE: 1:22	

ALLITH MANUFACTURING COMPANY	
DESCRIPTION Series 764 Allith track system with Durand's metal-clad door for 64"w x 84"h opening, left hand	
SIZE B	P/N 416-10-310
REV.	

