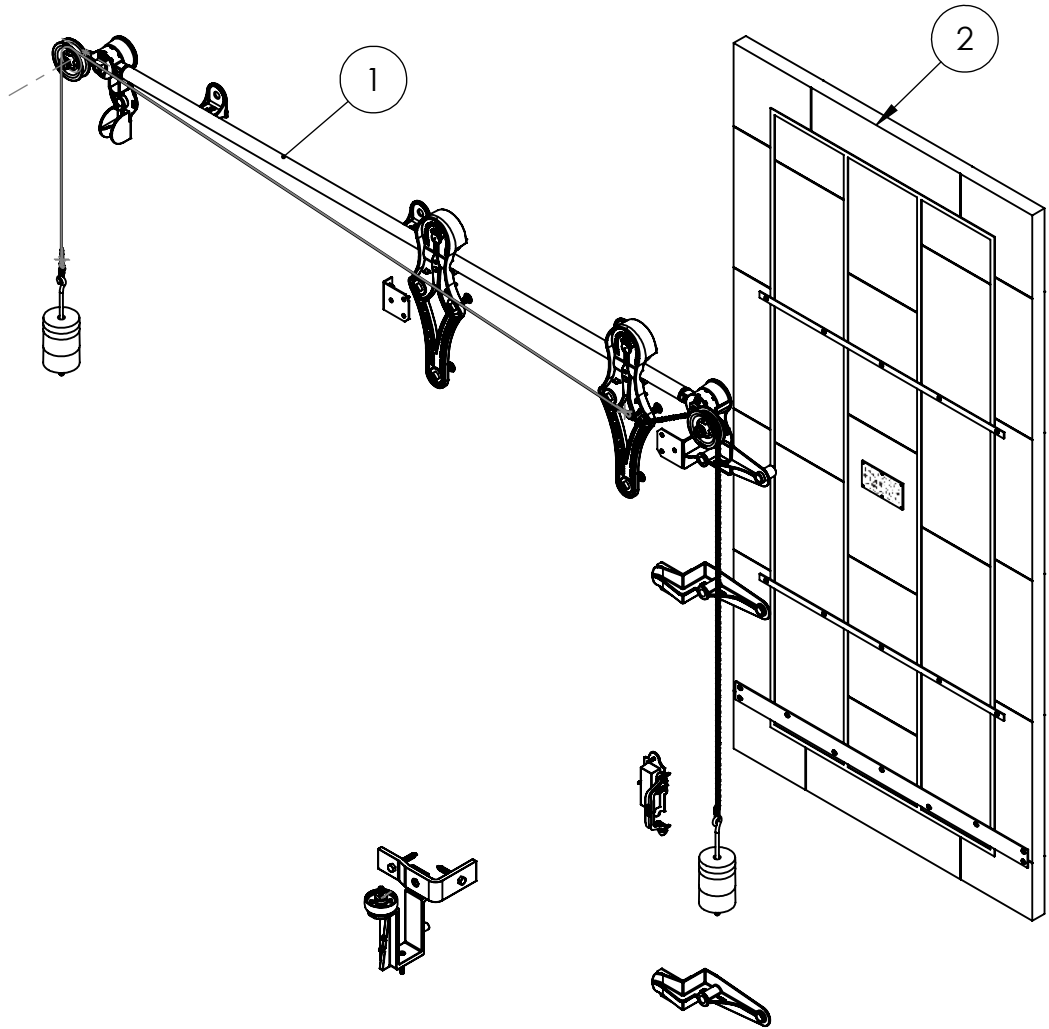
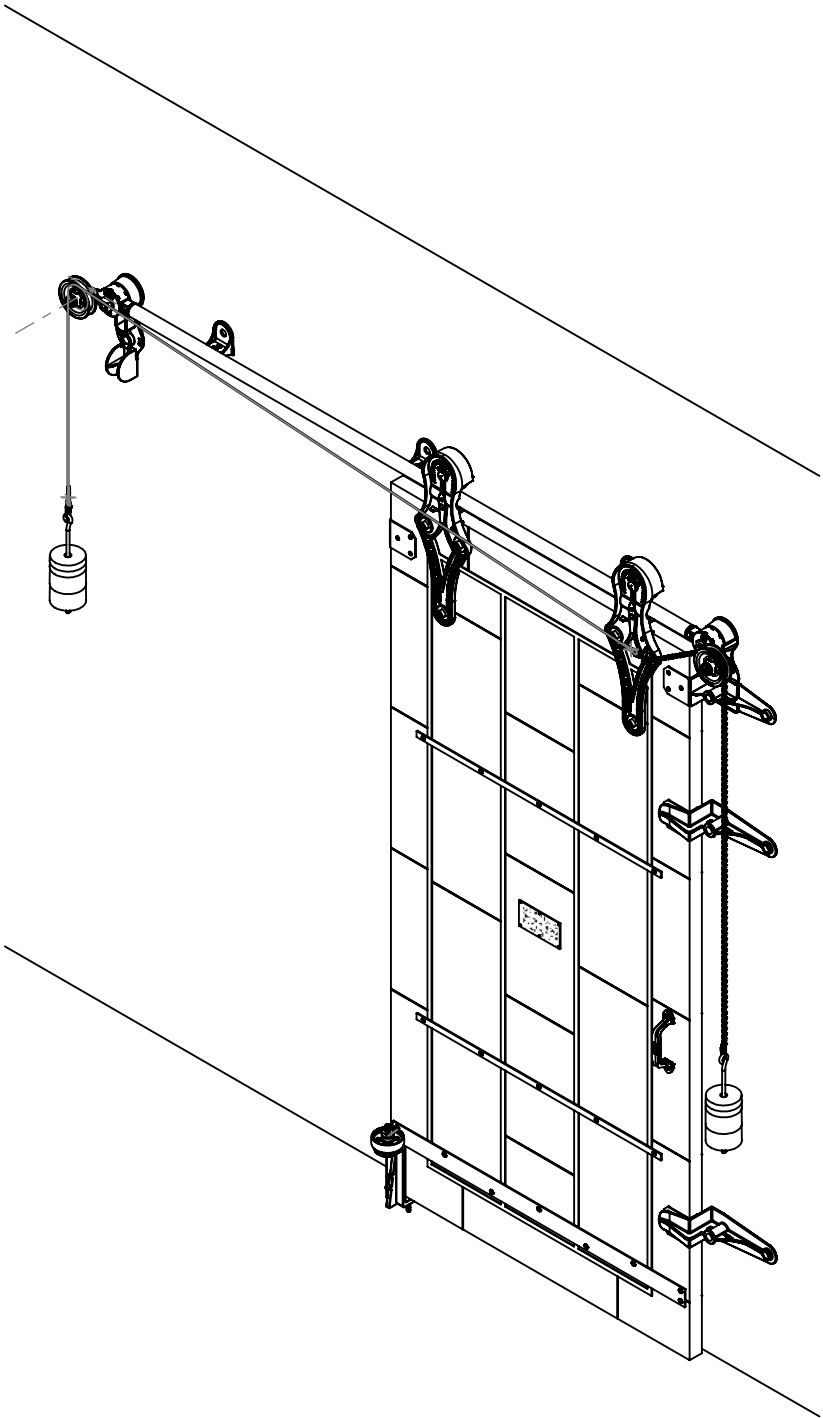


ITEM NO.	PART NUMBER	DESCRIPTION	MATERIAL	COLOR	SIZE	QTY.
1	316-12-170	No.836 Allith sliding fire door track system for 36" wide opening	Cast iron and steel	Black RAL 9005 (25-35 gloss)	0	1
2	820-30-450	Metal Clad Door for No.836 Series Hardware with Flat Top for 36" x 84" Opening, left hand	Sheet metal	Galvalume	44" x 90" x 1-3/4"	1

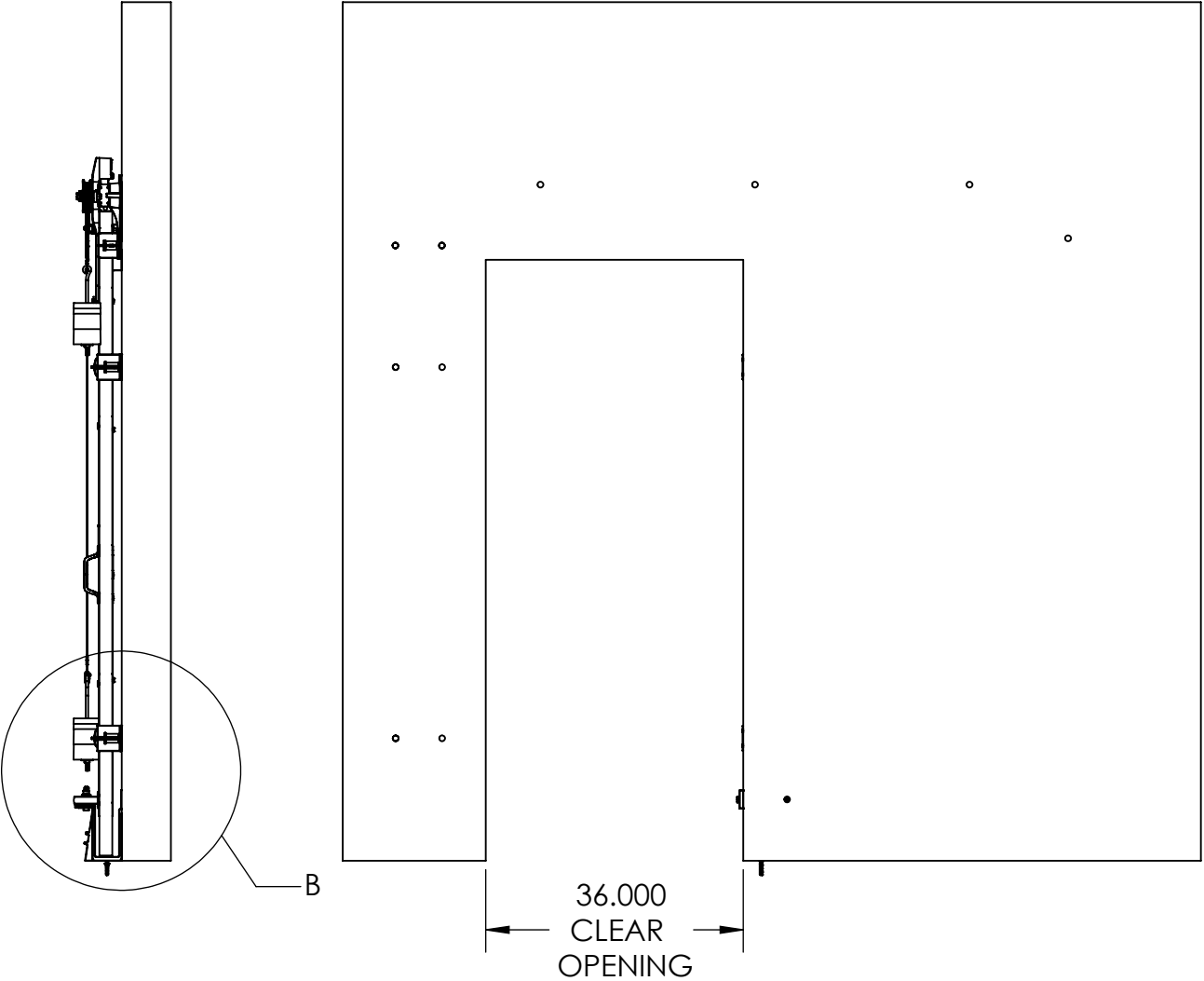


REV.	DESCRIPTION	DATE	BY	APPR'D
REVISION				
THE INFORMATION CONTAINED IN THIS DRAWING IS THE SOLE PROPERTY OF SCOTT WILLO SOLUTION ANY REPRODUCTION IN PART OR WHOLE WITHOUT THE WRITTEN PERMISSION OF SWS IS STRICTLY PROHIBITED.				

UNLESS OTHERWISE SPECIFIED
DIMENSIONS ARE IN INCHES
TOLERANCES ARE:
.X= ±.030
.XX= ±.015
.XXX= ±.005
ANGULAR= ±1°
MACHINED SURFACES TO HAVE
125 RMS FINISH
CONCENTRICITY= ±.002 T.I.R.
BREAK ALL SHARP EDGES

COPYRIGHTED CAD GENERATED DRAWING. DO NOT MANUALLY UPDATE	
DRAWN BY HT	DRAWN DATE 17-05-2025
CHECKED BY	CHECKED BY
APPROVED BY	APPROVED DATE
SHEET 1 OF 5	THIRD ANGLE PROJECTION
SCALE: 1:20	

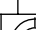
ALLITH MANUFACTURING COMPANY	
DESCRIPTION Series 836 Allith track system with Durand's metal-clad door for 36"w x 84"h opening, left hand	
SIZE B	P/N 416-12-170
REV.	



OPEN CONDITION

REV.	DESCRIPTION	DATE	BY	APPR'D
REVISION				
THE INFORMATION CONTAINED IN THIS DRAWING IS THE SOLE PROPERTY OF SCOTT WILLO SOLUTION ANY REPRODUCTION IN PART OR WHOLE WITHOUT THE WRITTEN PERMISSION OF SWS IS STRICTLY PROHIBITED.				

UNLESS OTHERWISE SPECIFIED
DIMENSIONS ARE IN INCHES
TOLERANCES ARE:
.X= $\pm .030$
.XX= $\pm .015$
.XXX= $\pm .005$
ANGULAR= $\pm 1^\circ$
MACHINED SURFACES TO HAVE
125 RMS FINISH
CONCENTRICITY= $\pm .002$ T.I.R.
BREAK ALL SHARP EDGES

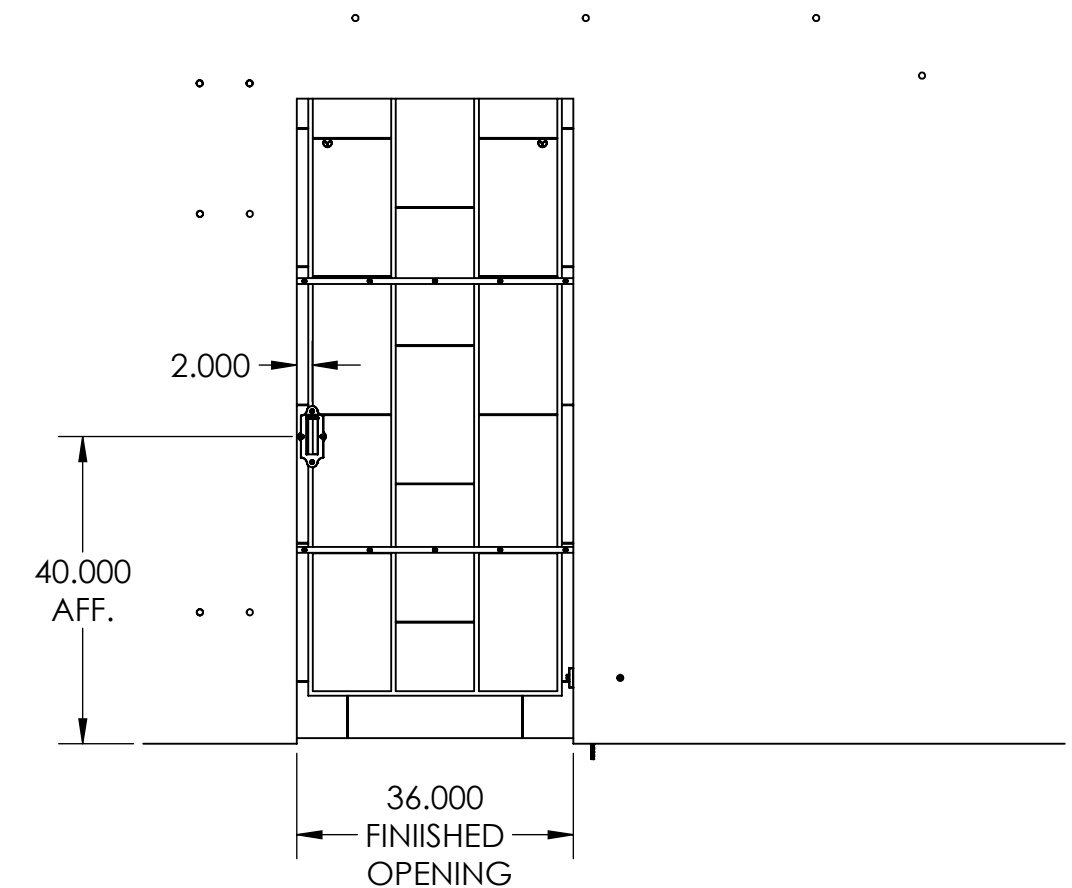
<p align="center">COPYRIGHTED CAD GENERATED DRAWING DO NOT MANUALLY UPDATE</p>	
DRAWN BY	DRAWN DATE
HT	17-05-2025
CHECKED BY	CHECKED BY
APPROVED BY	APPROVED DATE
SHEET 2 OF 5	 <p align="center">THIRD ANGLE PROJECTION</p>
SCALE: 1:25	

**ALLITH
MANUFACTURING
COMPANY**

DESCRIPTION
Series 836 Allith track system with Durand's metal-clad door for 36" w x 84" h opening, left hand


SIZE	P/N
B	416-12-170

REV.



REV.	DESCRIPTION	DATE	BY	APP.
REVISION				
THE INFORMATION CONTAINED IN THIS DRAWING IS THE SOLE PROPERTY OF SCOTT WILLO SOLUTION ANY REPRODUCTION IN PART OR WHOLE WITHOUT THE WRITTEN PERMISSION OF SWS IS STRICTLY PROHIBITED				

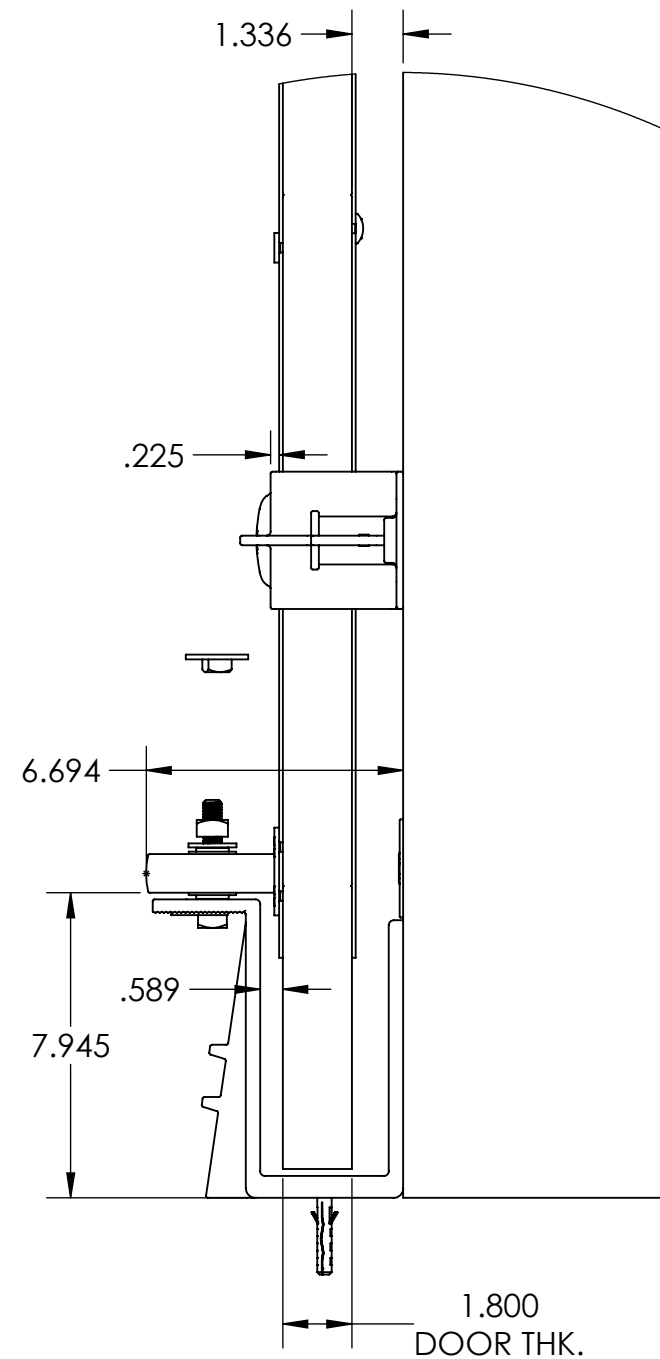
UNLESS OTHERWISE SPECIFIED
DIMENSIONS ARE IN INCHES
TOLERANCES ARE:
.X= $\pm .030$
.XX= $\pm .015$
.XXX= $\pm .005$
ANGULAR= $\pm 1^\circ$
MACHINED SURFACES TO HAVE
125 RMS FINISH
CONCENTRICITY= $\pm .002$ T.I.R.
BREAK ALL SHARP EDGES

D	COPYRIGHTED CAD GENERATED DRAWING. DO NOT MANUALLY UPDATE	
	DRAWN BY HT	DRAWN DATE 17-05-2025
	CHECKED BY	CHECKED BY
	APPROVED BY	APPROVED DA
	SHEET 3 OF 5	
	SCALE: 1:25	 THIRD ANGLE PROJECTION

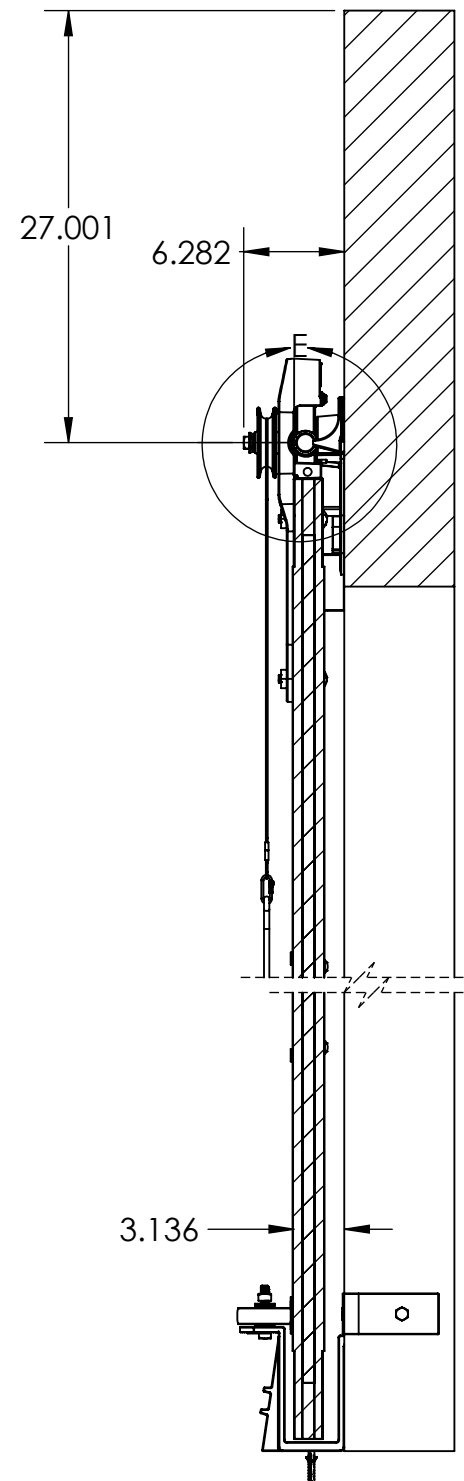
**ALLITH
MANUFACTURING
COMPANY**

Y	DESCRIPTION
DATE	Series 836 Allith track system with Durand's metal-clad door for 36"w x 84"h opening, left hand

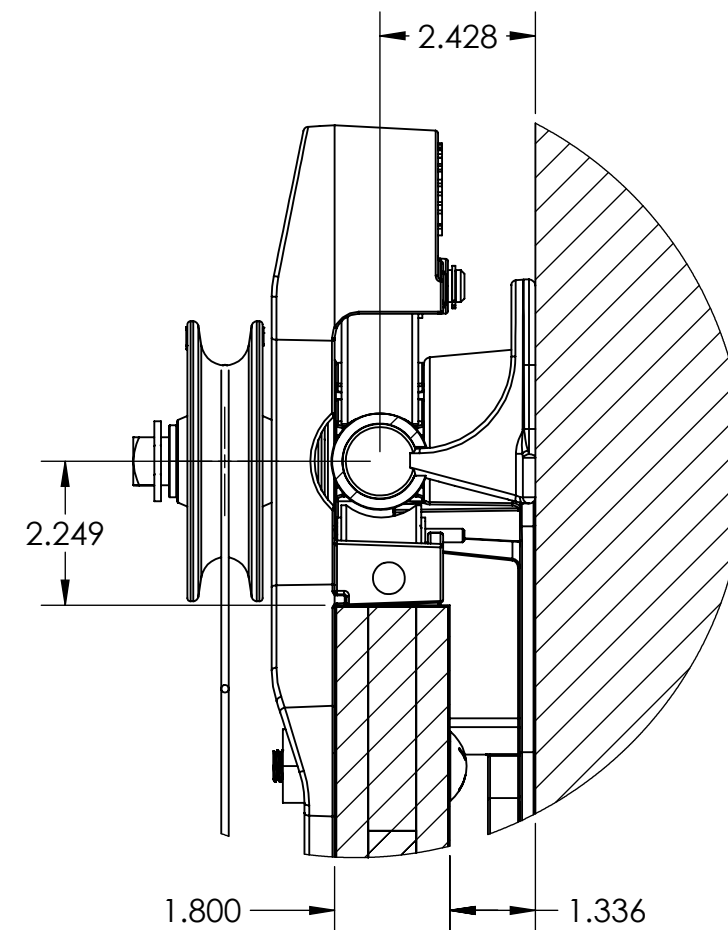
SIZE	P/N	REV.
B	416-12-170	



DETAIL B
SCALE 1 : 5



SECTION D-D
SCALE 1 : 12



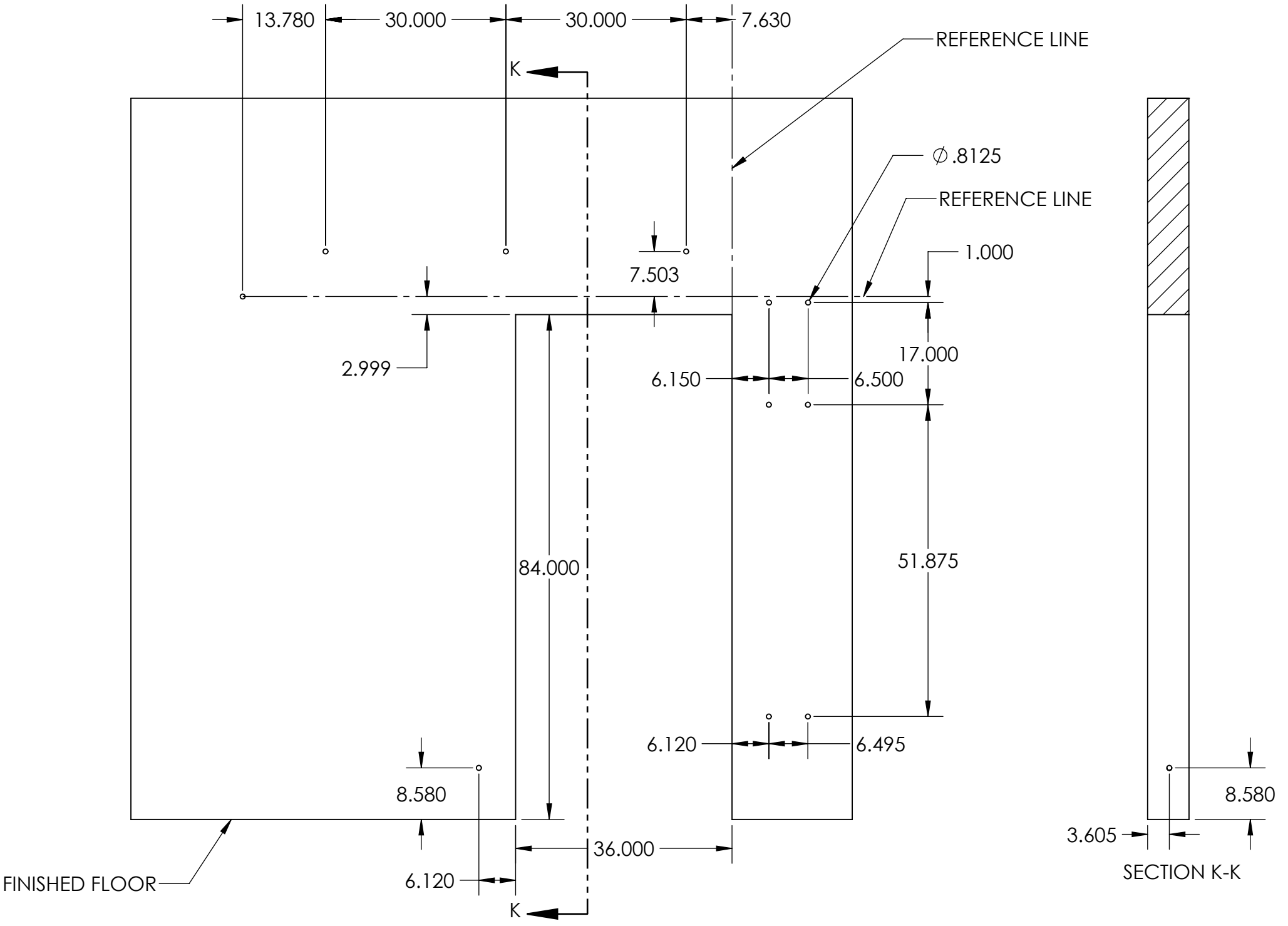
DETAIL E
SCALE 1 : 3

REV.	DESCRIPTION	DATE	BY	APPR'D
REVISION				
THE INFORMATION CONTAINED IN THIS DRAWING IS THE SOLE PROPERTY OF SCOTT WILLO SOLUTION ANY REPRODUCTION IN PART OR WHOLE WITHOUT THE WRITTEN PERMISSION OF SWS IS STRICTLY PROHIBITED.				

UNLESS OTHERWISE SPECIFIED
DIMENSIONS ARE IN INCHES
TOLERANCES ARE:
.X= $\pm .030$
.XX= $\pm .015$
.XXX= $\pm .005$
ANGULAR= $\pm 1^\circ$
MACHINED SURFACES TO HAVE
125 RMS FINISH
CONCENTRICITY= $\pm .002$ T.I.R.
BREAK ALL SHARP EDGES

COPYRIGHTED CAD GENERATED DRAWING, DO NOT MANUALLY UPDATE	
DRAWN BY HT	DRAWN DATE 17-05-2025
CHECKED BY	CHECKED BY
APPROVED BY	APPROVED DATE
SHEET 4 OF 5	THIRD ANGLE PROJECTION
SCALE: 1:30	

ALLITH MANUFACTURING COMPANY	
DESCRIPTION Series 836 Allith track system with Durand's metal-clad door for 36"w x 84"h opening, left hand	
SIZE B	P/N 416-12-170
REV.	



WALL PENETRATION HOLE CENTERS

REV.	DESCRIPTION	DATE	BY	APPR'D
REVISION				
THE INFORMATION CONTAINED IN THIS DRAWING IS THE SOLE PROPERTY OF SCOTT WILLO SOLUTION ANY REPRODUCTION IN PART OR WHOLE WITHOUT THE WRITTEN PERMISSION OF SWS IS STRICTLY PROHIBITED.				

UNLESS OTHERWISE SPECIFIED
DIMENSIONS ARE IN INCHES
TOLERANCES ARE:
.X= ±.030
.XX= ±.015
.XXX= ±.005
ANGULAR= ±1°
MACHINED SURFACES TO HAVE
125 RMS FINISH
CONCENTRICITY= ±.002 T.I.R.
BREAK ALL SHARP EDGES

COPYRIGHTED CAD GENERATED DRAWING, DO NOT MANUALLY UPDATE	
DRAWN BY HT	DRAWN DATE 17-05-2025
CHECKED BY	CHECKED BY
APPROVED BY	APPROVED DATE
SHEET 5 OF 5	THIRD ANGLE PROJECTION
SCALE: 1:30	

ALLITH MANUFACTURING COMPANY	
DESCRIPTION Series 836 Allith track system with Durand's metal-clad door for 36"w x 84"h opening, left hand	
SIZE B	P/N 416-12-170
REV.	