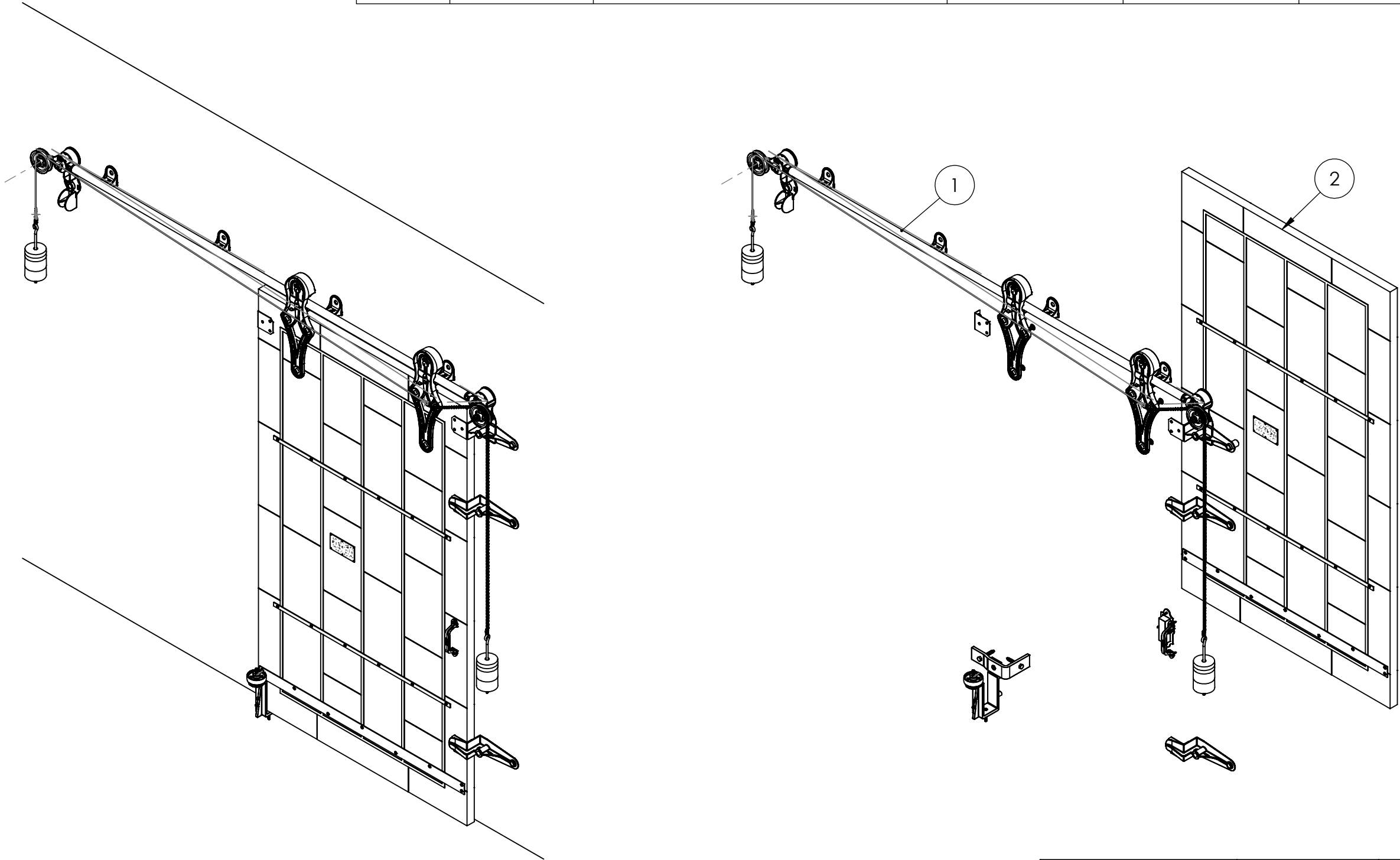


ITEM NO.	PART NUMBER	DESCRIPTION	MATERIAL	COLOR	SIZE	QTY.
1	316-12-210	No.844 Allith sliding fire door track system for 44" wide opening	Cast iron and steel	Black RAL 9005 (25-35 gloss)	0	1
2	820-30-470	Metal Clad Door for No.844 Series Hardware with Flat Top for 44" x 84" Opening, left hand	Sheet metal	Galvalume	52" x 90" x 1-3/4"	1

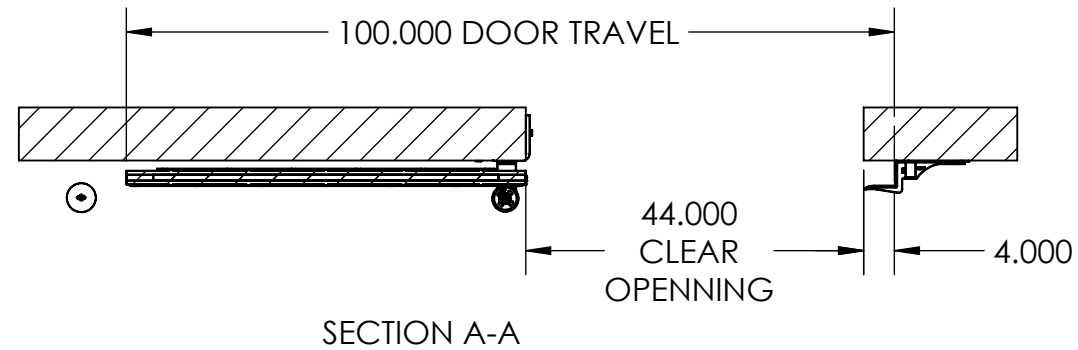


REV.	DESCRIPTION	DATE	BY	APPR'D
REVISION				
THE INFORMATION CONTAINED IN THIS DRAWING IS THE SOLE PROPERTY OF SCOTT WILLO SOLUTION ANY REPRODUCTION IN PART OR WHOLE WITHOUT THE WRITTEN PERMISSION OF SWS IS STRICTLY PROHIBITED.				

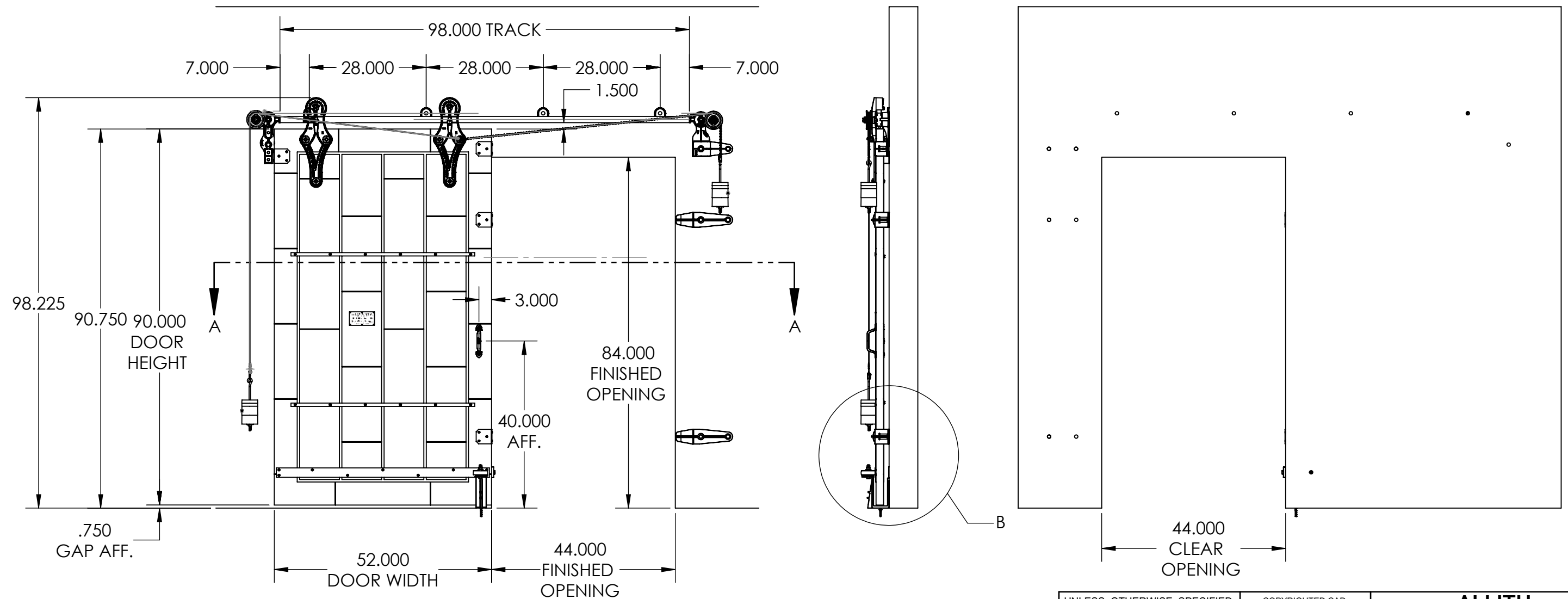
UNLESS OTHERWISE SPECIFIED  
DIMENSIONS ARE IN INCHES  
TOLERANCES ARE:  
.X= ±.030  
.XX= ±.015  
.XXX= ±.005  
ANGULAR= ±1°  
MACHINED SURFACES TO HAVE  
125 RMS FINISH  
CONCENTRICITY= ±.002 T.I.R.  
BREAK ALL SHARP EDGES

COPYRIGHTED CAD GENERATED DRAWING, DO NOT MANUALLY UPDATE	
DRAWN BY HT	DRAWN DATE 17-05-2025
CHECKED BY	CHECKED BY
APPROVED BY	APPROVED DATE
SHEET 1 OF 5	THIRD ANGLE PROJECTION
SCALE: 1:20	

ALLITH MANUFACTURING COMPANY	
DESCRIPTION Series 844 Allith track system with Durand's metal-clad door for 44"w x 84"h opening, left hand	
SIZE B	P/N 416-12-210
REV.	



INSIDE DOOR OPEN POSITION



OPEN CONDITION

REV.	DESCRIPTION	DATE	BY	APPR'D
REVISION				
THE INFORMATION CONTAINED IN THIS DRAWING IS THE SOLE PROPERTY OF SCOTT WILLO SOLUTION ANY REPRODUCTION IN PART OR WHOLE WITHOUT THE WRITTEN PERMISSION OF SWS IS STRICTLY PROHIBITED.				

UNLESS OTHERWISE SPECIFIED  
DIMENSIONS ARE IN INCHES  
TOLERANCES ARE:  
.X=  $\pm .030$   
.XX=  $\pm .015$   
.XXX=  $\pm .005$   
ANGULAR=  $\pm 1^\circ$   
MACHINED SURFACES TO HAVE  
125 RMS FINISH  
CONCENTRICITY=  $\pm .002$  T.I.R.  
BREAK ALL SHARP EDGES

COPYRIGHTED CAD GENERATED DRAWING, DO NOT MANUALLY UPDATE	
DRAWN BY HT	DRAWN DATE 17-05-2025
CHECKED BY	CHECKED BY
APPROVED BY	APPROVED DATE
SHEET 2 OF 5	THIRD ANGLE PROJECTION
SCALE: 1:25	

ALLITH MANUFACTURING COMPANY	
DESCRIPTION Series 844 Allith track system with Durand's metal-clad door for 44"w x 84"h opening, left hand	
SIZE B	P/N 416-12-210
REV.	



Technical drawing of a door assembly, showing front and side views with dimensions.

**Front View Dimensions:**

- Overall width: 116.345
- Top track offset: 7.000
- Top track offset: 2.249
- Top track offset: 1.500
- Door height: 90.000
- Door width: 52.000
- Bottom track offset: 17.124
- Gap allowance: .750
- Wall thickness: 6.880
- Section line C-C


**Side View Dimensions:**

- Top track offset: 3.136
- Bottom track offset: 6.694



REV.	DESCRIPTION	DATE	BY	APPROVED
<b>REVISION</b>				
THE INFORMATION CONTAINED IN THIS DRAWING IS THE SOLE PROPERTY OF SCOTT WILLO SOLUTION ANY REPRODUCTION IN PART OR WHOLE WITHOUT THE WRITTEN PERMISSION OF SWS IS STRICTLY PROHIBITED				

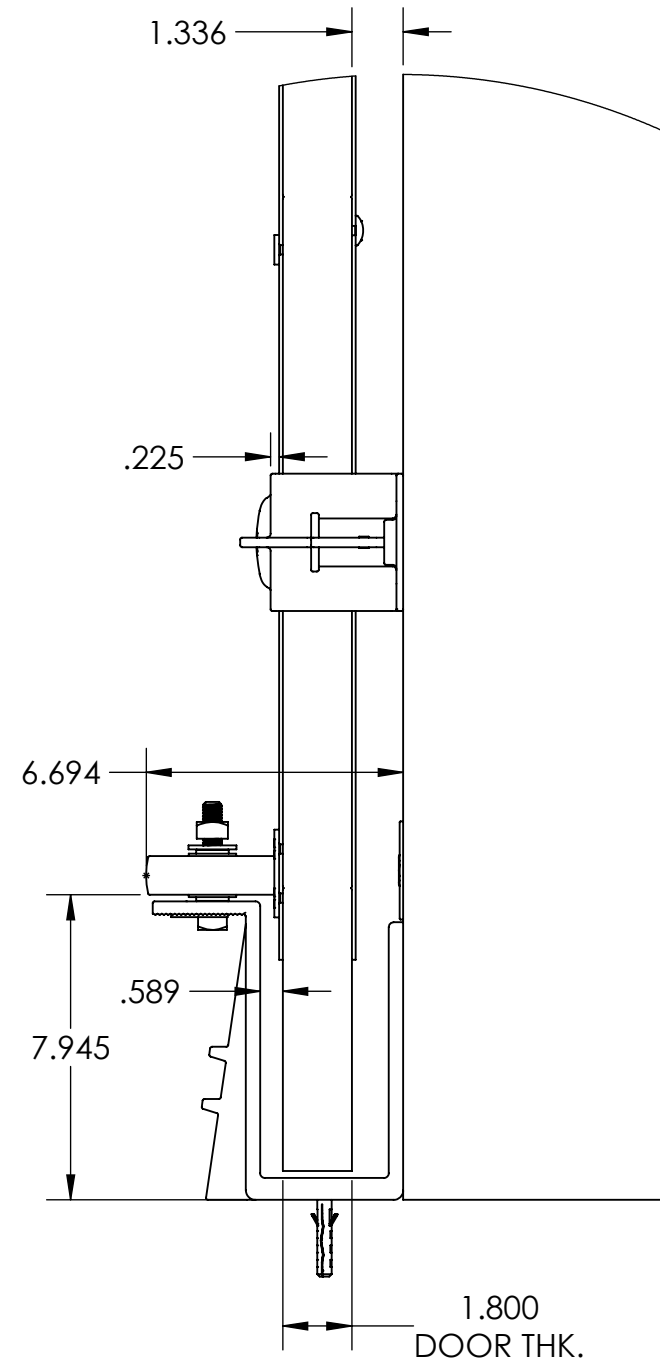
UNLESS OTHERWISE SPECIFIED  
DIMENSIONS ARE IN INCHES  
TOLERANCES ARE:  
.X=  $\pm .030$   
.XX=  $\pm .015$   
.XXX=  $\pm .005$   
ANGULAR=  $\pm 1^\circ$   
MACHINED SURFACES TO HAVE  
125 RMS FINISH  
CONCENTRICITY=  $\pm .002$  T.I.R.  
BREAK ALL SHARP EDGES

COPYRIGHTED CAD GENERATED DRAWING, DO NOT MANUALLY UPDATE	
DRAWN BY HT	DRAWN DATE 17-05-2025
CHECKED BY	CHECKED BY
APPROVED BY	APPROVED DATE
SHEET 3 OF 5	 <p>SCALE: 1:25</p> <p>THIRD ANGLE PROJECTION</p>

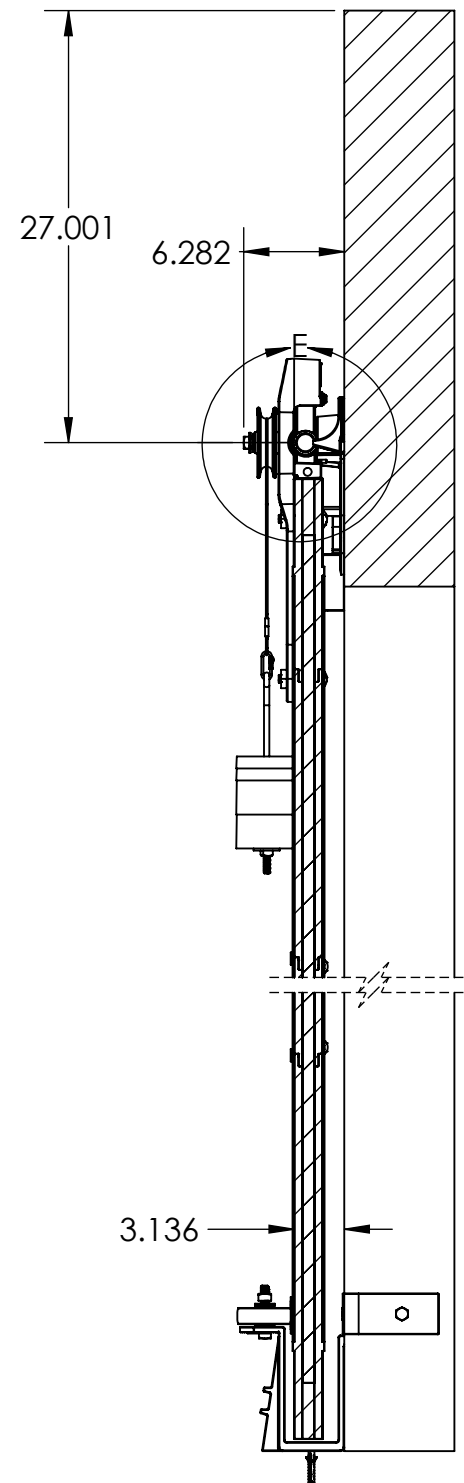
**ALLITH  
MANUFACTURING  
COMPANY**

DESCRIPTION	
Series 844 Allith track system with Durand's metal-clad door for 44"w x 84"h opening, left hand	

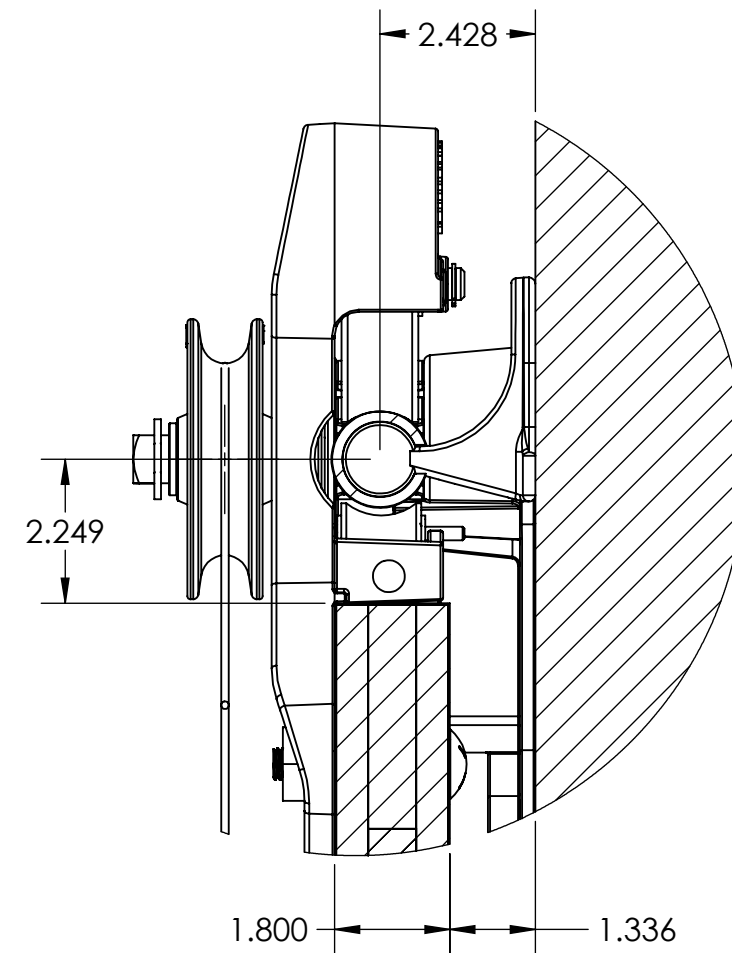
SIZE B	P/N <b>416-12-210</b>	REV.
-----------	--------------------------	------



DETAIL B  
SCALE 1 : 5



SECTION D-D  
SCALE 1 : 12



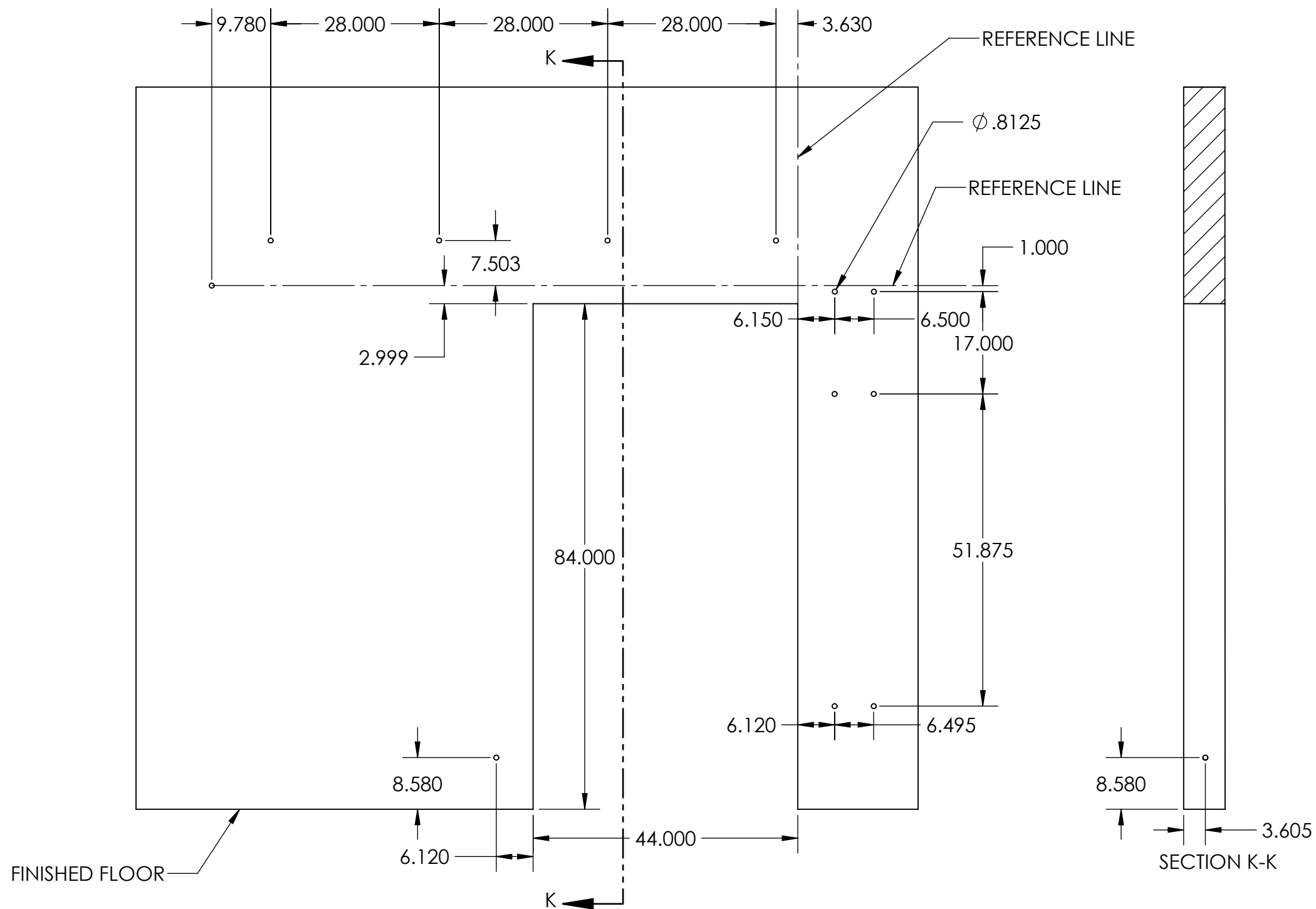
DETAIL E  
SCALE 1 : 3

REV.	DESCRIPTION	DATE	BY	APPR'D
REVISION				
THE INFORMATION CONTAINED IN THIS DRAWING IS THE SOLE PROPERTY OF SCOTT WILLO SOLUTION ANY REPRODUCTION IN PART OR WHOLE WITHOUT THE WRITTEN PERMISSION OF SWS IS STRICTLY PROHIBITED.				

UNLESS OTHERWISE SPECIFIED  
DIMENSIONS ARE IN INCHES  
TOLERANCES ARE:  
.X=  $\pm .030$   
.XX=  $\pm .015$   
.XXX=  $\pm .005$   
ANGULAR=  $\pm 1^\circ$   
MACHINED SURFACES TO HAVE  
125 RMS FINISH  
CONCENTRICITY=  $\pm .002$  T.I.R.  
BREAK ALL SHARP EDGES

COPYRIGHTED CAD GENERATED DRAWING. DO NOT MANUALLY UPDATE	
DRAWN BY HT	DRAWN DATE 17-05-2025
CHECKED BY	CHECKED BY
APPROVED BY	APPROVED DATE
SHEET 4 OF 5	THIRD ANGLE PROJECTION
SCALE: 1:30	

ALLITH MANUFACTURING COMPANY	
DESCRIPTION Series 844 Allith track system with Durand's metal-clad door for 44"w x 84"h opening, left hand	
SIZE B	P/N 416-12-210
REV.	



WALL PENETRATION HOLE CENTERS

REV.	DESCRIPTION	DATE	BY	APPR'D
REVISION				
THE INFORMATION CONTAINED IN THIS DRAWING IS THE SOLE PROPERTY OF SCOTT WILLO SOLUTION ANY REPRODUCTION IN PART OR WHOLE WITHOUT THE WRITTEN PERMISSION OF SWS IS STRICTLY PROHIBITED.				

UNLESS OTHERWISE SPECIFIED  
DIMENSIONS ARE IN INCHES  
TOLERANCES ARE:  
.X= ±.030  
.XX= ±.015  
.XXX= ±.005  
ANGULAR= ±1°  
MACHINED SURFACES TO HAVE  
125 RMS FINISH  
CONCENTRICITY= ±.002 T.I.R.  
BREAK ALL SHARP EDGES

COPYRIGHTED CAD GENERATED DRAWING, DO NOT MANUALLY UPDATE	
DRAWN BY HT	DRAWN DATE 17-05-2025
CHECKED BY	CHECKED BY
APPROVED BY	APPROVED DATE
SHEET 5 OF 5	THIRD ANGLE PROJECTION
SCALE: 1:30	

ALLITH MANUFACTURING COMPANY	
DESCRIPTION Series 844 Allith track system with Durand's metal-clad door for 44"w x 84"h opening, left hand	
SIZE B	P/N 416-12-210
REV.	