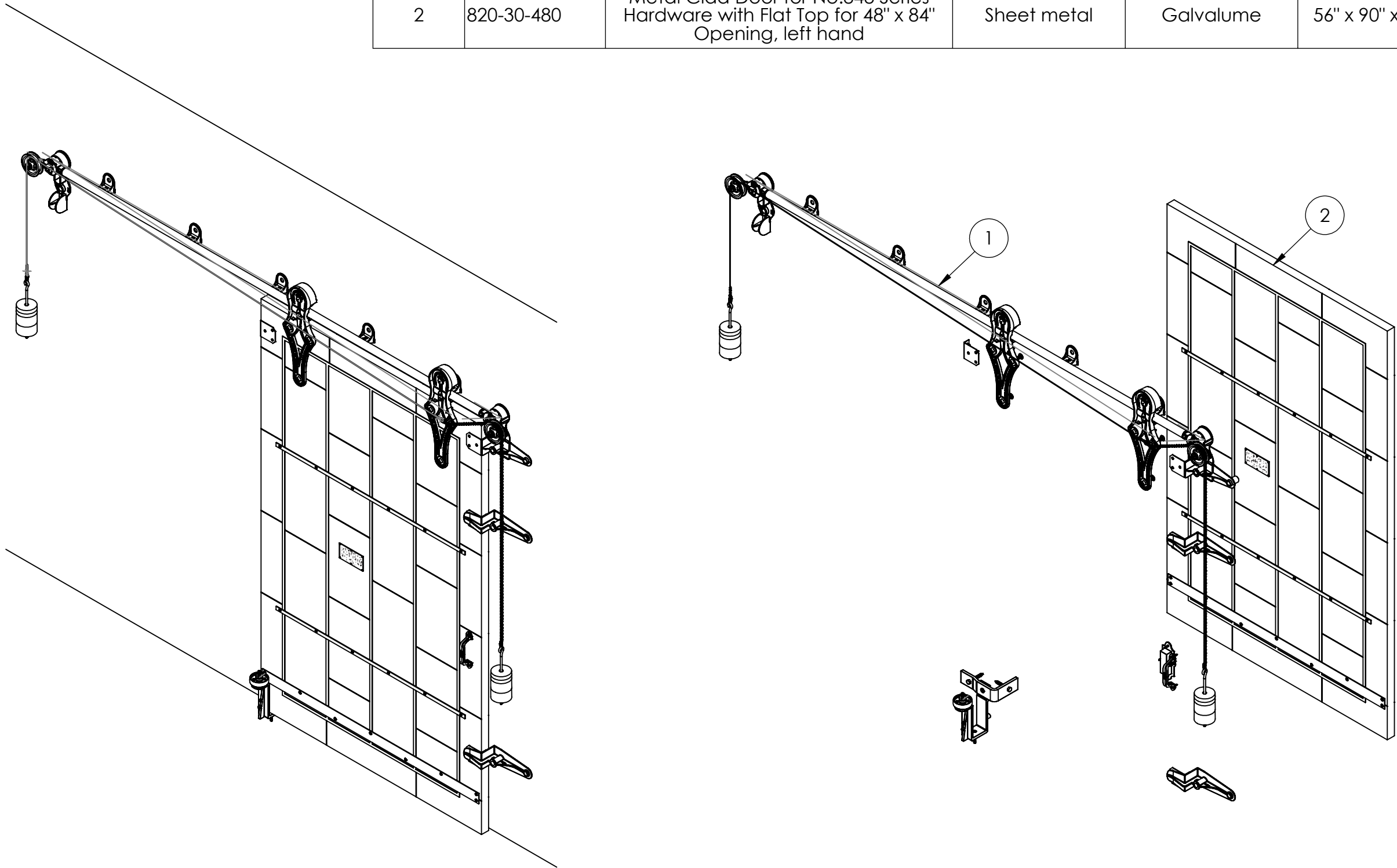


| ITEM NO. | PART NUMBER | DESCRIPTION | MATERIAL | COLOR | SIZE | QTY. |
|----------|-------------|---|---------------------|------------------------------|--------------------|------|
| 1 | 316-12-230 | No.848 Allith sliding fire door track system for 48" wide opening | Cast iron and steel | Black RAL 9005 (25-35 gloss) | 0 | 1 |
| 2 | 820-30-480 | Metal Clad Door for No.848 Series Hardware with Flat Top for 48" x 84" Opening, left hand | Sheet metal | Galvalume | 56" x 90" x 1-3/4" | 1 |



| | | | | |
|--|-------------|------|----|--------|
| | | | | |
| | | | | |
| | | | | |
| | | | | |
| REV. | DESCRIPTION | DATE | BY | APPR'D |
| REVISION | | | | |
| THE INFORMATION CONTAINED IN THIS DRAWING IS THE SOLE PROPERTY OF SCOTT WILLO SOLUTION ANY REPRODUCTION IN PART OR WHOLE WITHOUT THE WRITTEN PERMISSION OF SWS IS STRICTLY PROHIBITED. | | | | |

UNLESS OTHERWISE SPECIFIED
DIMENSIONS ARE IN INCHES
TOLERANCES ARE:
.X= ±.030
.XX= ±.015
.XXX= ±.005
ANGULAR= ±1°
MACHINED SURFACES TO HAVE
125 RMS FINISH
CONCENTRICITY= ±.002 T.I.R.
BREAK ALL SHARP EDGES


| | |
|---|---------------------------|
| COPYRIGHTED CAD GENERATED DRAWING. DO NOT MANUALLY UPDATE | |
| DRAWN BY HT | DRAWN DATE 17-05-2025 |
| CHECKED BY | CHECKED BY |
| APPROVED BY | APPROVED DATE |
| SHEET 1 OF 5 | THIRD ANGLE PROJECTION |
| SCALE: 1:20 | |

| | |
|--|-------------------|
| ALLITH MANUFACTURING COMPANY | |
| DESCRIPTION Series 848 Allith track system with Durand's metal-clad door for 48"w x 84"h opening, left hand | |
| SIZE B | P/N 416-12-230 |
| REV. | |



| | | | | |
|--|-------------|------|----|--------|
| | | | | |
| | | | | |
| | | | | |
| | | | | |
| REV. | DESCRIPTION | DATE | BY | APPR'D |
| REVISION | | | | |
| THE INFORMATION CONTAINED IN THIS DRAWING IS THE SOLE PROPERTY OF SCOTT WILLO SOLUTION ANY REPRODUCTION IN PART OR WHOLE WITHOUT THE WRITTEN PERMISSION OF SWS IS STRICTLY PROHIBITED. | | | | |

UNLESS OTHERWISE SPECIFIED
DIMENSIONS ARE IN INCHES
TOLERANCES ARE:
.X= $\pm .030$
.XX= $\pm .015$
.XXX= $\pm .005$
ANGULAR= $\pm 1^\circ$
MACHINED SURFACES TO HAVE
125 RMS FINISH
CONCENTRICITY= $\pm .002$ T.I.R.
BREAK ALL SHARP EDGES

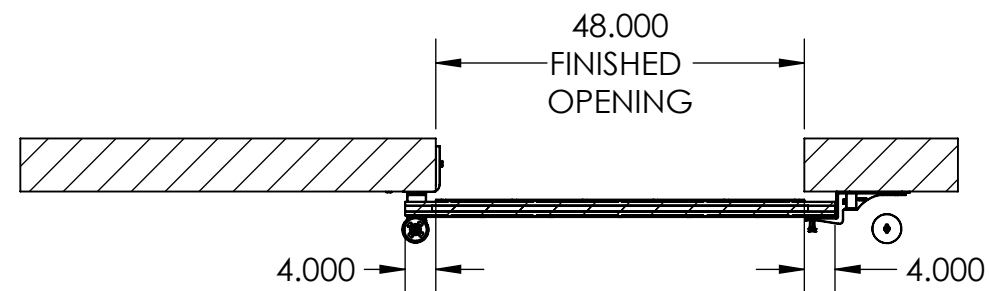
| | |
|--|---|
| <p align="center">GENERATED CAD DRAWING</p> <p align="center">DO NOT MANUALLY UPDATE</p> | |
| DRAWN BY | DRAWN DATE |
| HT | 17-05-2025 |
| CHECKED BY | CHECKED BY |
| APPROVED BY | APPROVED DATE |
| SHEET 2 OF 5 |  <p align="center">THIRD ANGLE PROJECTION</p> |
| SCALE: 1:25 | |

**ALLITH
MANUFACTURING
COMPANY**

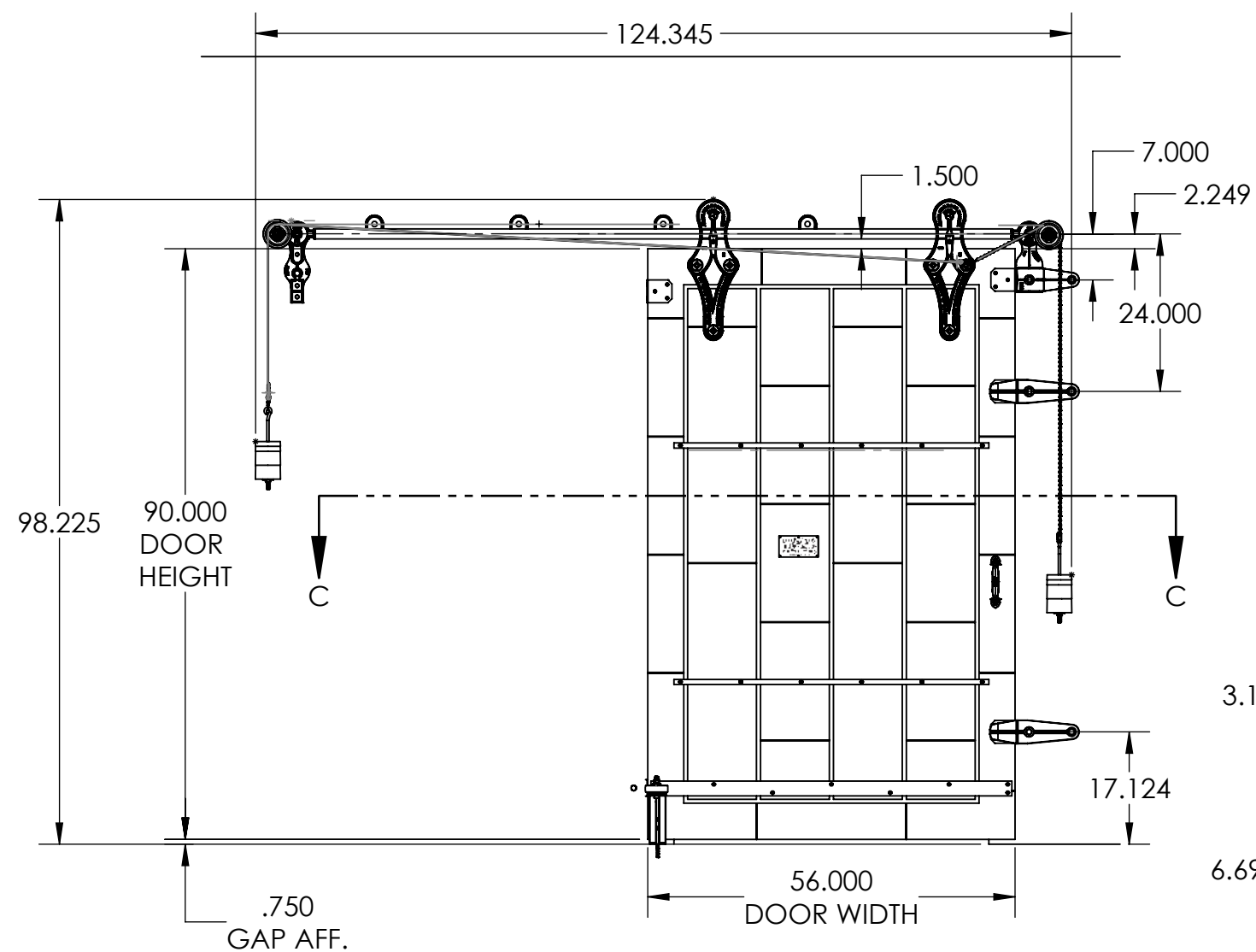
| DESCRIPTION |
|---|
| Series 848 Allith track system with Durand's metal-clad door for 48"w x 84"h opening, left hand |

| | |
|------|-------------------|
| SIZE | P/N |
| B | 416-12-230 |

REV.

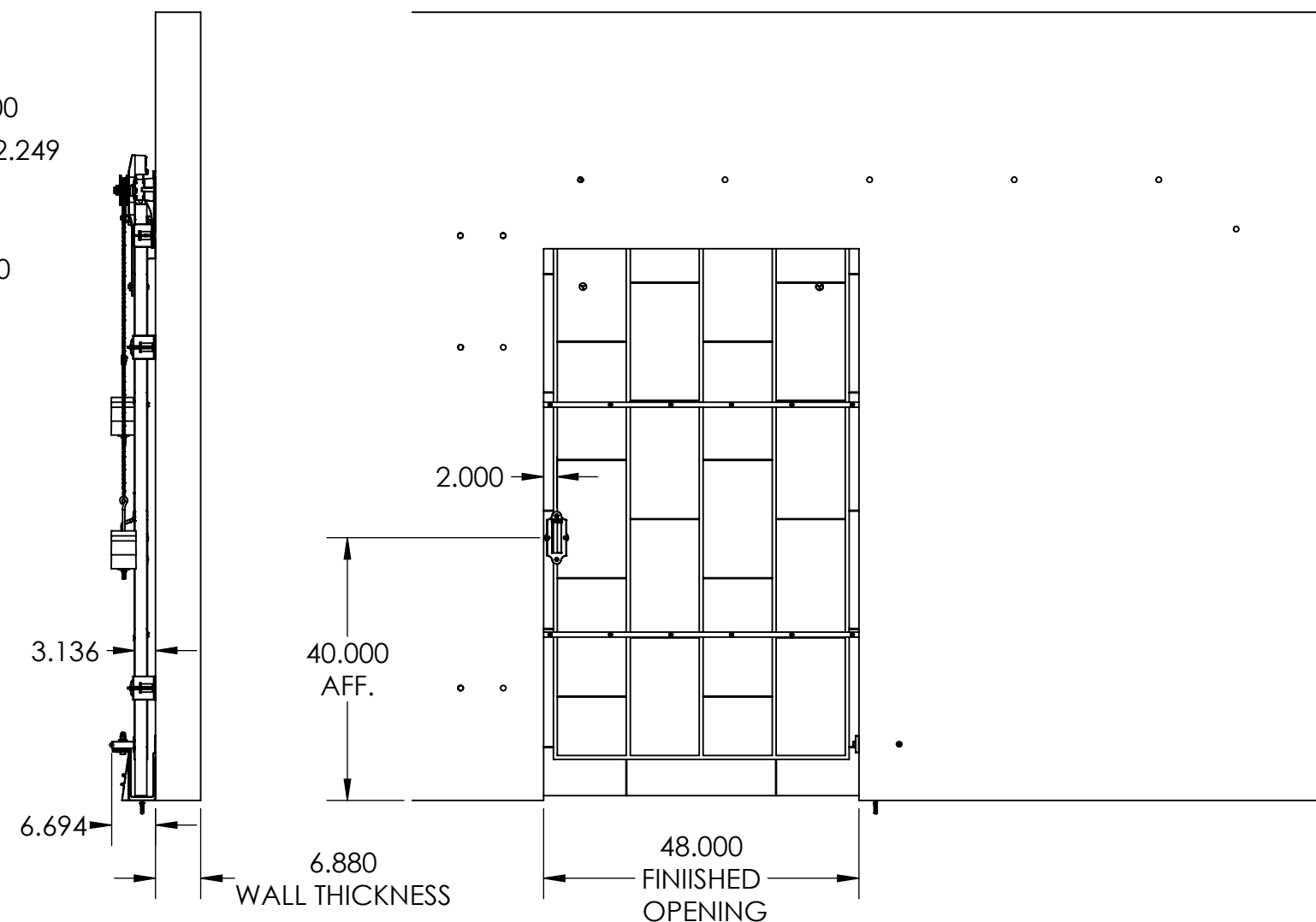


SECTION C-C



CLOSED CONDITION

INSIDE DOOR CLOSED POSITION



| REV. | DESCRIPTION | DATE | BY | APPR'D |
|--|-------------|------|----|--------|
| REVISION | | | | |
| THE INFORMATION CONTAINED IN THIS DRAWING IS THE SOLE PROPERTY OF SCOTT WILLO SOLUTION ANY REPRODUCTION IN PART OR WHOLE WITHOUT THE WRITTEN PERMISSION OF SWS IS STRICTLY PROHIBITED. | | | | |

UNLESS OTHERWISE SPECIFIED
DIMENSIONS ARE IN INCHES
TOLERANCES ARE:
.X= $\pm .030$
.XX= $\pm .015$
.XXX= $\pm .005$
ANGULAR= $\pm 1^\circ$
MACHINED SURFACES TO HAVE
125 RMS FINISH
CONCENTRICITY= $\pm .002$ T.I.R.
BREAK ALL SHARP EDGES

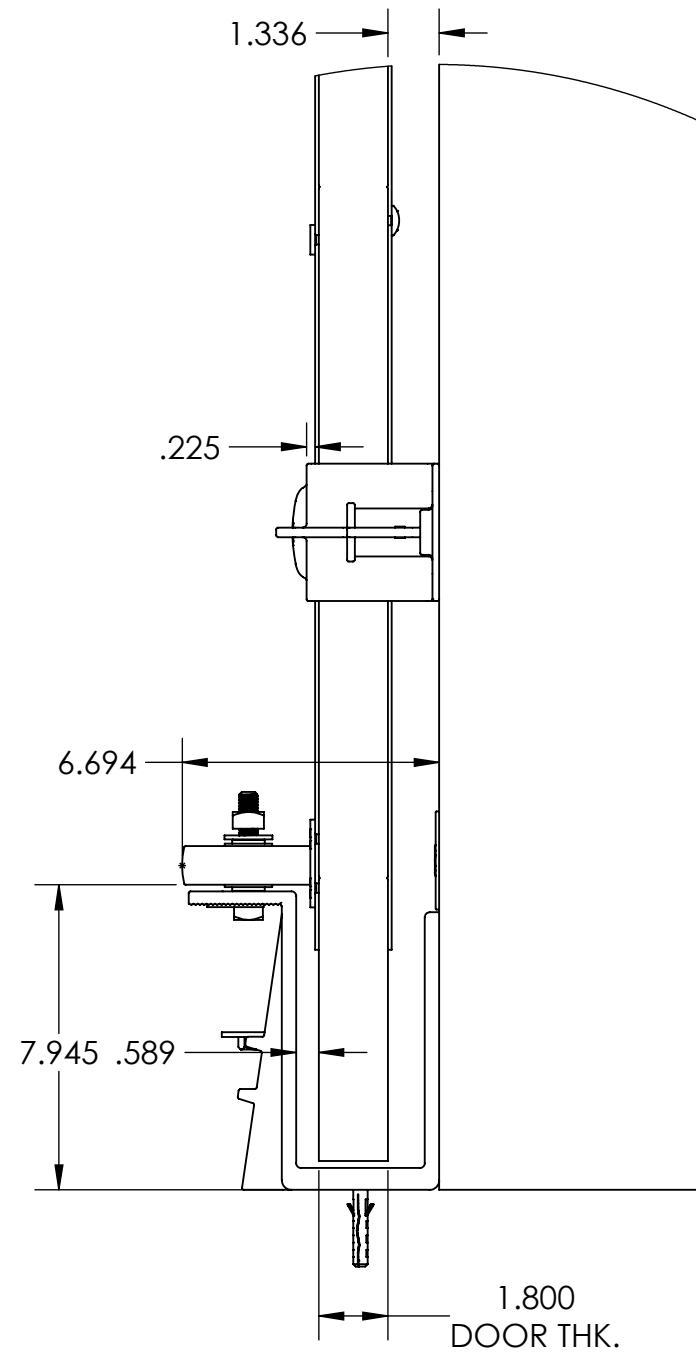
| | |
|---|---------------------------|
| COPYRIGHTED CAD GENERATED DRAWING. DO NOT MANUALLY UPDATE | |
| DRAWN BY HT | DRAWN DATE 17-05-2025 |
| CHECKED BY | CHECKED BY |
| APPROVED BY | APPROVED DATE |
| SHEET 3 OF 5 | THIRD ANGLE PROJECTION |
| SCALE: 1:25 | |

**ALLITH
MANUFACTURING
COMPANY**

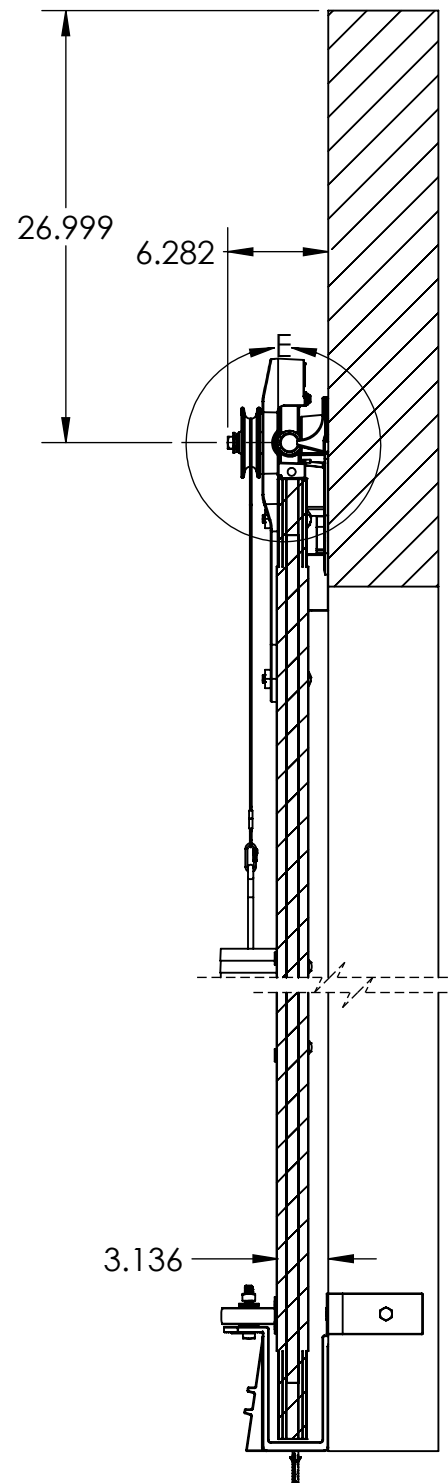
DESCRIPTION
Series 848 Allith track system with Durand's metal-clad door for
48"w x 84"h opening, left hand

SIZE P/N
B 416-12-230

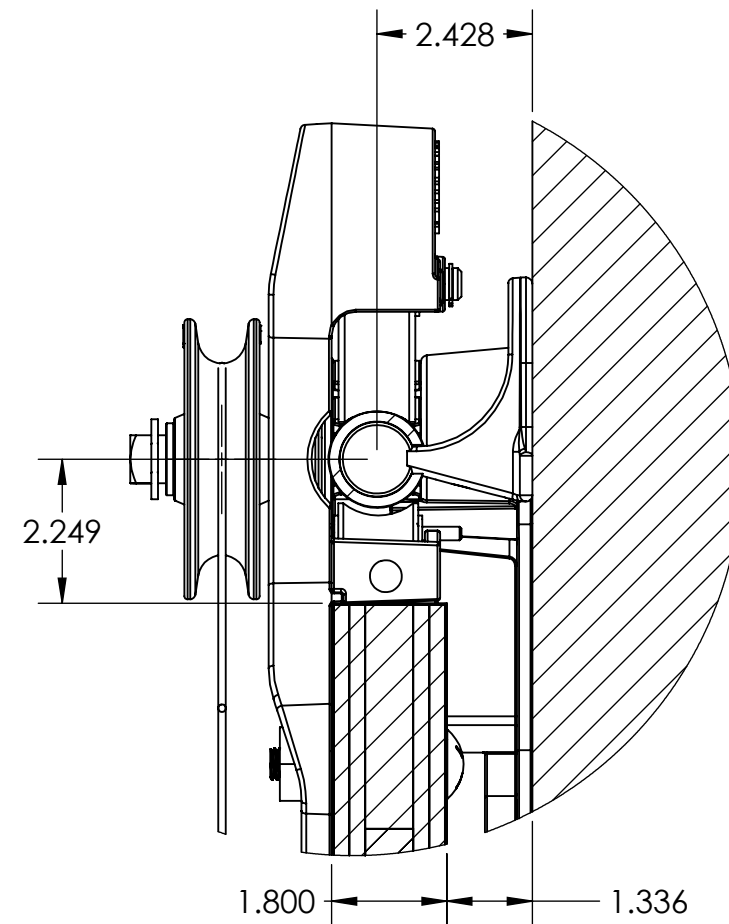
REV.



DETAIL B
SCALE 1 : 5



SECTION D-D
SCALE 1 : 12



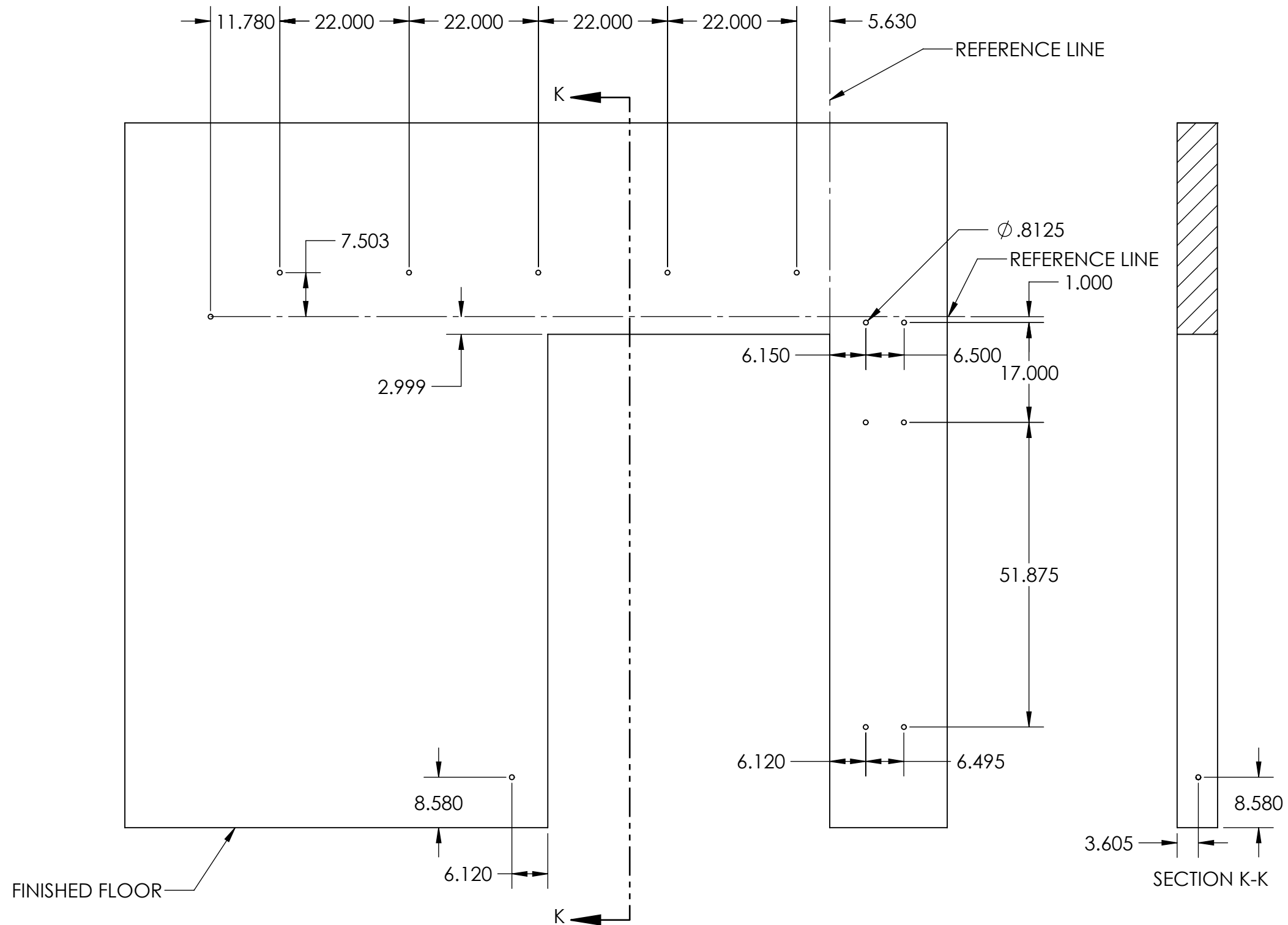
DETAIL E
SCALE 1 : 3

| REV. | DESCRIPTION | DATE | BY | APPR'D |
|--|-------------|------|----|--------|
| REVISION | | | | |
| THE INFORMATION CONTAINED IN THIS DRAWING IS THE SOLE PROPERTY OF SCOTT WILLO SOLUTION ANY REPRODUCTION IN PART OR WHOLE WITHOUT THE WRITTEN PERMISSION OF SWS IS STRICTLY PROHIBITED. | | | | |

UNLESS OTHERWISE SPECIFIED
DIMENSIONS ARE IN INCHES
TOLERANCES ARE:
.X= $\pm .030$
.XX= $\pm .015$
.XXX= $\pm .005$
ANGULAR= $\pm 1^\circ$
MACHINED SURFACES TO HAVE
125 RMS FINISH
CONCENTRICITY= $\pm .002$ T.I.R.
BREAK ALL SHARP EDGES

| | |
|---|---------------------------|
| COPYRIGHTED CAD GENERATED DRAWING, DO NOT MANUALLY UPDATE | |
| DRAWN BY HT | DRAWN DATE 17-05-2025 |
| CHECKED BY | CHECKED BY |
| APPROVED BY | APPROVED DATE |
| SHEET 4 OF 5 | THIRD ANGLE PROJECTION |
| SCALE: 1:30 | |

| | |
|--|-------------------|
| ALLITH MANUFACTURING COMPANY | |
| DESCRIPTION Series 848 Allith track system with Durand's metal-clad door for 48"w x 84"h opening, left hand | |
| SIZE B | P/N 416-12-230 |
| REV. | |



WALL PENETRATION HOLE CENTERS

| REV. | DESCRIPTION | DATE | BY | APPR'D |
|--|-------------|------|----|--------|
| REVISION | | | | |
| THE INFORMATION CONTAINED IN THIS DRAWING IS THE SOLE PROPERTY OF SCOTT WILLO SOLUTION ANY REPRODUCTION IN PART OR WHOLE WITHOUT THE WRITTEN PERMISSION OF SWS IS STRICTLY PROHIBITED. | | | | |

UNLESS OTHERWISE SPECIFIED
DIMENSIONS ARE IN INCHES
TOLERANCES ARE:
.X= $\pm .030$
.XX= $\pm .015$
.XXX= $\pm .005$
ANGULAR= $\pm 1^\circ$
MACHINED SURFACES TO HAVE
125 RMS FINISH
CONCENTRICITY= $\pm .002$ T.I.R.
BREAK ALL SHARP EDGES

| | |
|---|---------------------------|
| COPYRIGHTED CAD GENERATED DRAWING, DO NOT MANUALLY UPDATE | |
| DRAWN BY HT | DRAWN DATE 17-05-2025 |
| CHECKED BY | CHECKED BY |
| APPROVED BY | APPROVED DATE |
| SHEET 5 OF 5 | THIRD ANGLE PROJECTION |
| SCALE: 1:30 | |

| | |
|--|-------------------|
| ALLITH MANUFACTURING COMPANY | |
| DESCRIPTION Series 848 Allith track system with Durand's metal-clad door for 48"w x 84"h opening, left hand | |
| SIZE B | P/N 416-12-230 |
| REV. | |