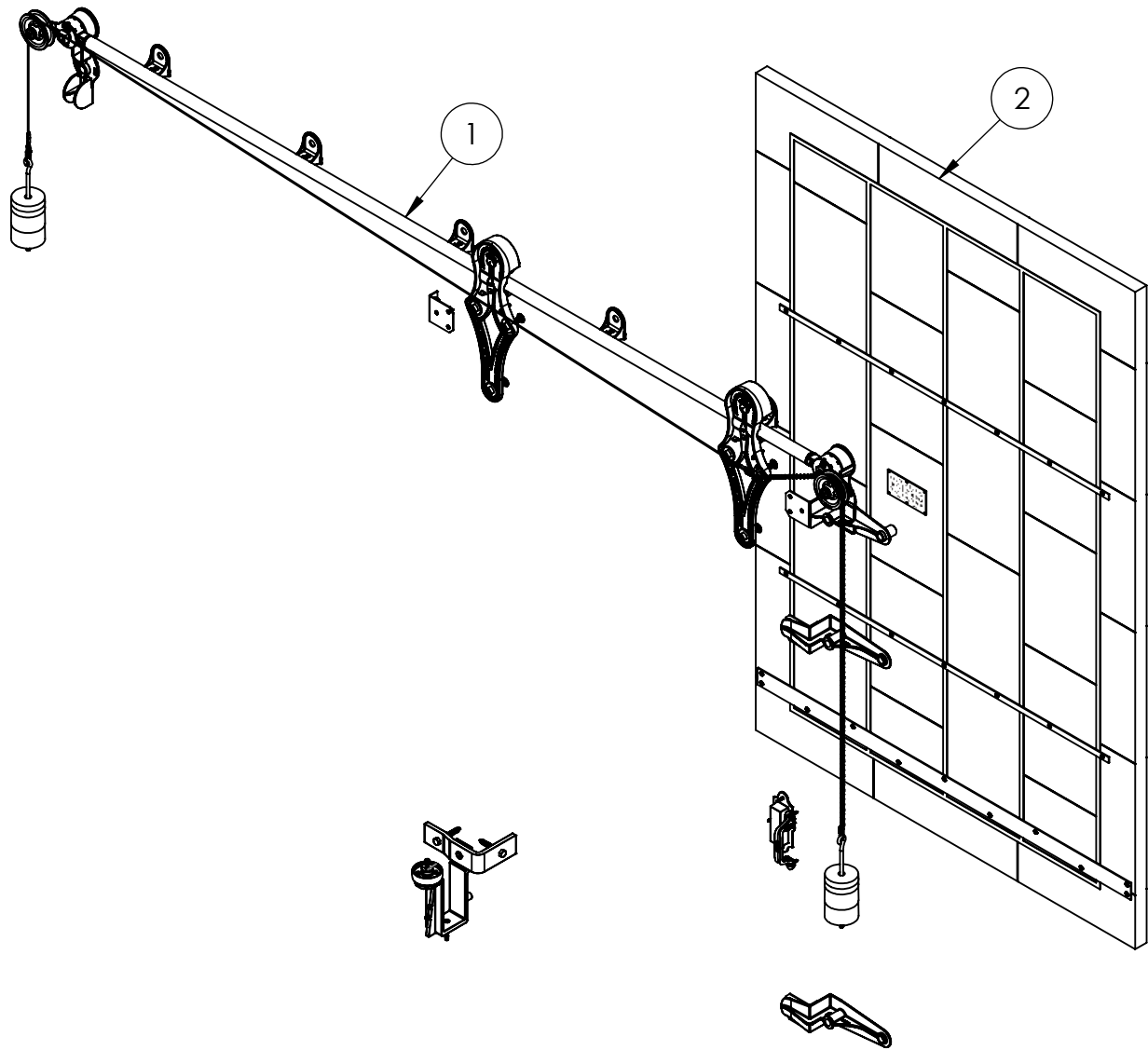
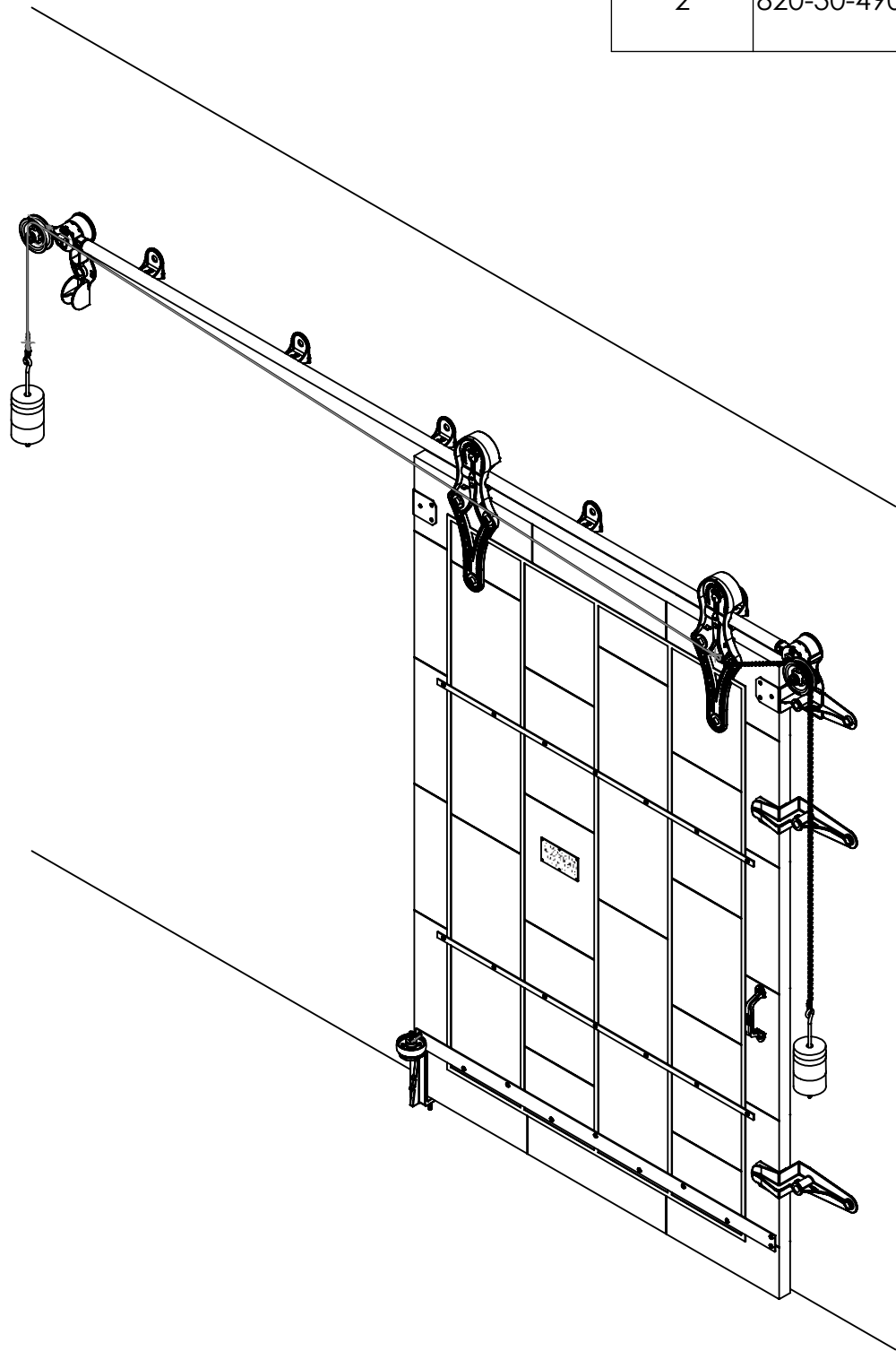


ITEM NO.	PART NUMBER	DESCRIPTION	MATERIAL	COLOR	SIZE	QTY.
1	316-12-250	No.852 Allith sliding fire door track system for 52" wide opening	Cast iron and steel	Black RAL 9005 (25-35 gloss)	0	1
2	820-30-490	Metal Clad Door for No.852 Series Hardware with Flat Top for 52" x 84" Opening, left hand	Sheet metal	Galvalume	60" x 90" x 1-3/4"	1



REV.	DESCRIPTION	DATE	BY	APPR'D
REVISION				
THE INFORMATION CONTAINED IN THIS DRAWING IS THE SOLE PROPERTY OF SCOTT WILLO SOLUTION ANY REPRODUCTION IN PART OR WHOLE WITHOUT THE WRITTEN PERMISSION OF SWS IS STRICTLY PROHIBITED.				

UNLESS OTHERWISE SPECIFIED
DIMENSIONS ARE IN INCHES
TOLERANCES ARE:
.X= ±.030
.XX= ±.015
.XXX= ±.005
ANGULAR= ±1°
MACHINED SURFACES TO HAVE
125 RMS FINISH
CONCENTRICITY= ±.002 T.I.R.
BREAK ALL SHARP EDGES

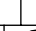
COPYRIGHTED CAD GENERATED DRAWING. DO NOT MANUALLY UPDATE	
DRAWN BY HT	DRAWN DATE 17-05-2025
CHECKED BY	CHECKED BY
APPROVED BY	APPROVED DATE
SHEET 1 OF 5	THIRD ANGLE PROJECTION
SCALE: 1:20	

ALLITH MANUFACTURING COMPANY	
DESCRIPTION Series 852 Allith track system with Durand's metal-clad door for 52"w x 84"h opening, left hand	
SIZE B	P/N 416-12-250
REV.	



REV.	DESCRIPTION	DATE	BY	APPRD
REVISION				
THE INFORMATION CONTAINED IN THIS DRAWING IS THE SOLE PROPERTY OF SCOTT WILLO SOLUTION ANY REPRODUCTION IN PART OR WHOLE WITHOUT THE WRITTEN PERMISSION OF SWS IS STRICTLY PROHIBITED.				

UNLESS OTHERWISE SPECIFIED
DIMENSIONS ARE IN INCHES
TOLERANCES ARE:
.X= $\pm .030$
.XX= $\pm .015$
.XXX= $\pm .005$
ANGULAR= $\pm 1^\circ$
MACHINED SURFACES TO HAVE
125 RMS FINISH
CONCENTRICITY= $\pm .002$ T.I.R.
BREAK ALL SHARP EDGES

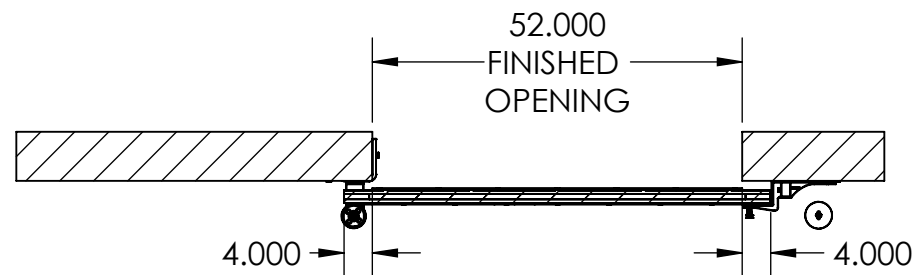
<p align="center">GENERATED CAD DO NOT MANUALLY UPDATE</p>	
<p>DRAWN BY</p> <p align="center">HT</p>	<p>DRAWN DATE</p> <p align="center">17-05-2025</p>
<p>CHECKED BY</p>	<p>CHECKED BY</p>
<p>APPROVED BY</p>	<p>APPROVED DATE</p>
<p>SHEET 2 OF 5</p>	<div style="display: flex; align-items: center; justify-content: center;">  </div> <p align="center">THIRD ANGLE PROJECTION</p>
<p>SCALE:</p> <p align="center">1:27</p>	

**ALLITH
MANUFACTURING
COMPANY**

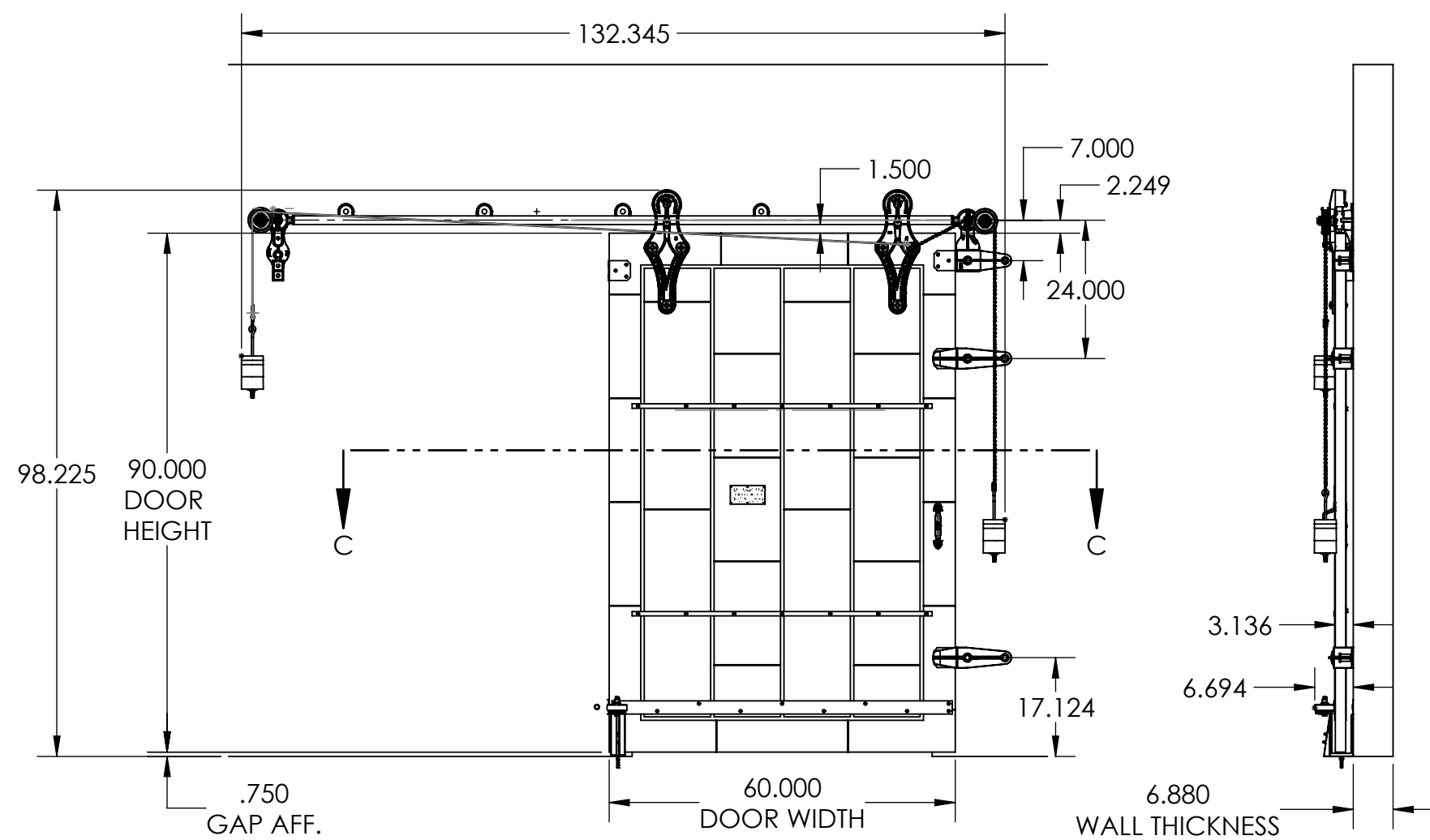
DESCRIPTION
Series 852 Allith track system with Durand's metal-clad door for 52"w x 84"h opening, left hand

SIZE	P/N
B	416-12-250

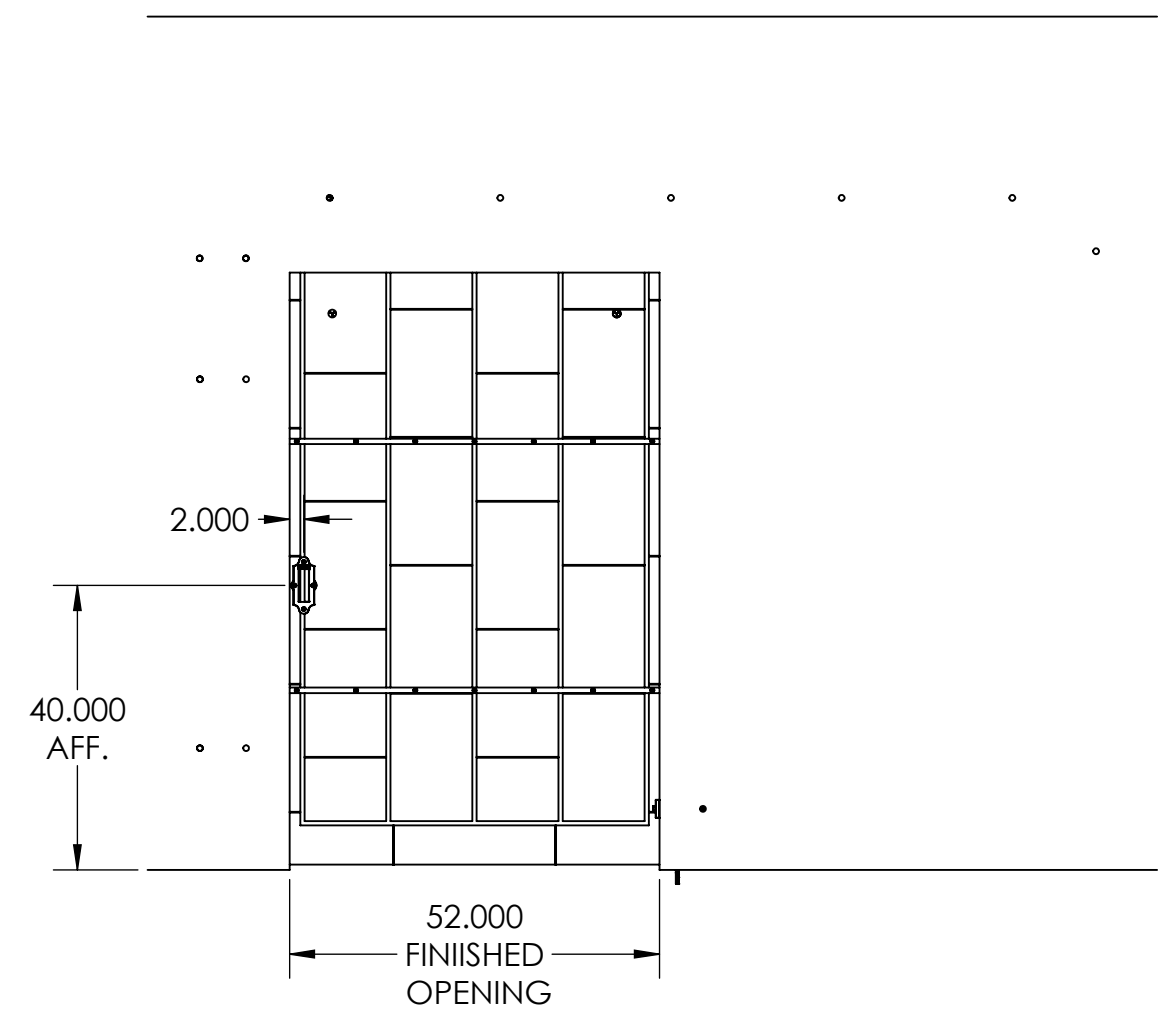
REV.



SECTION C-C



INSIDE DOOR CLOSED POSITION



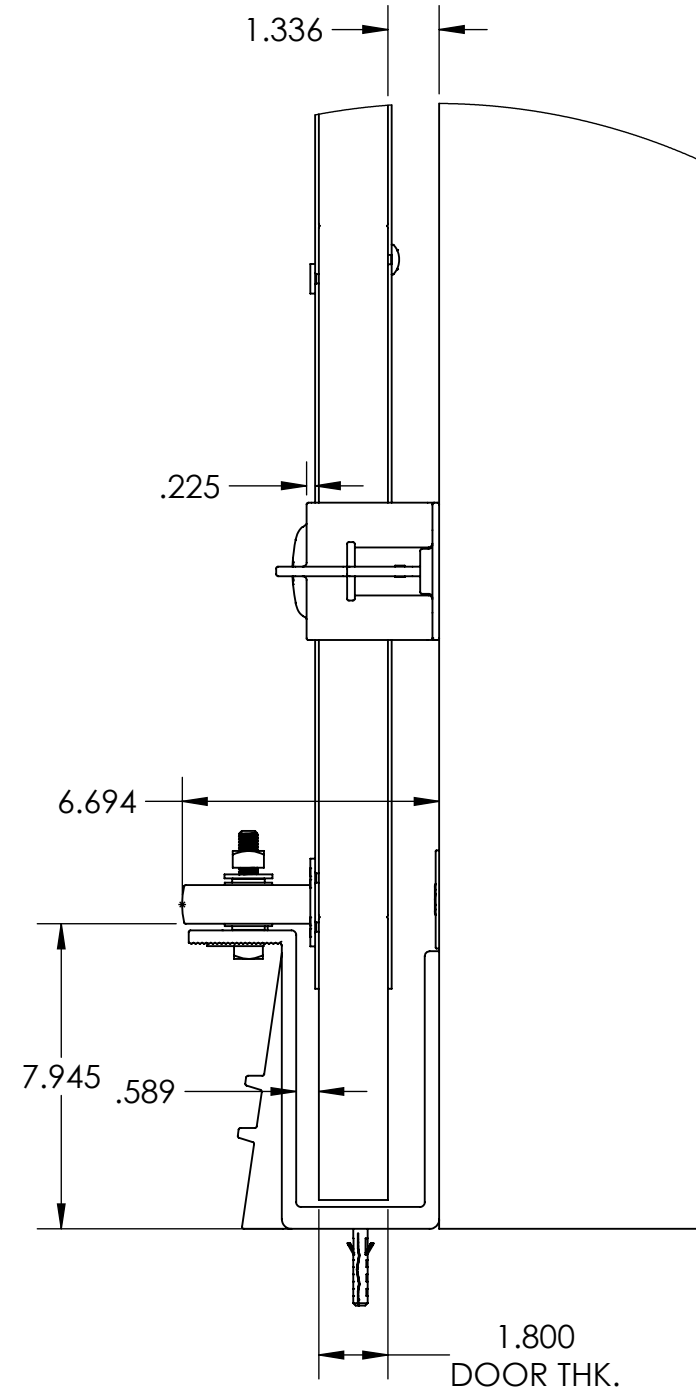
CLOSED CONDITION

REV.	DESCRIPTION	DATE	BY	APPR'D
REVISION				
THE INFORMATION CONTAINED IN THIS DRAWING IS THE SOLE PROPERTY OF SCOTT WILLO SOLUTION ANY REPRODUCTION IN PART OR WHOLE WITHOUT THE WRITTEN PERMISSION OF SWS IS STRICTLY PROHIBITED.				

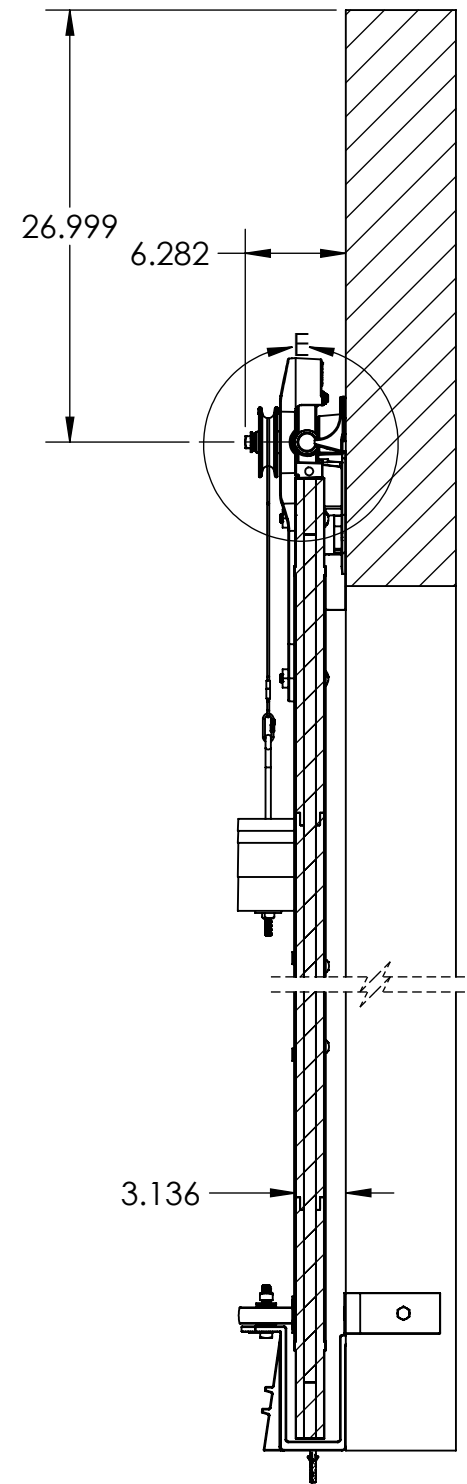
UNLESS OTHERWISE SPECIFIED
DIMENSIONS ARE IN INCHES
TOLERANCES ARE:
.X= ±.030
.XX= ±.015
.XXX= ±.005
ANGULAR= ±1°
MACHINED SURFACES TO HAVE
125 RMS FINISH
CONCENTRICITY= ±.002 T.I.R.
BREAK ALL SHARP EDGES

COPYRIGHTED CAD GENERATED DRAWING. DO NOT MANUALLY UPDATE	
DRAWN BY HT	DRAWN DATE 17-05-2025
CHECKED BY	CHECKED BY
APPROVED BY	APPROVED DATE
SHEET 3 OF 5	
SCALE: 1:27	THIRD ANGLE PROJECTION

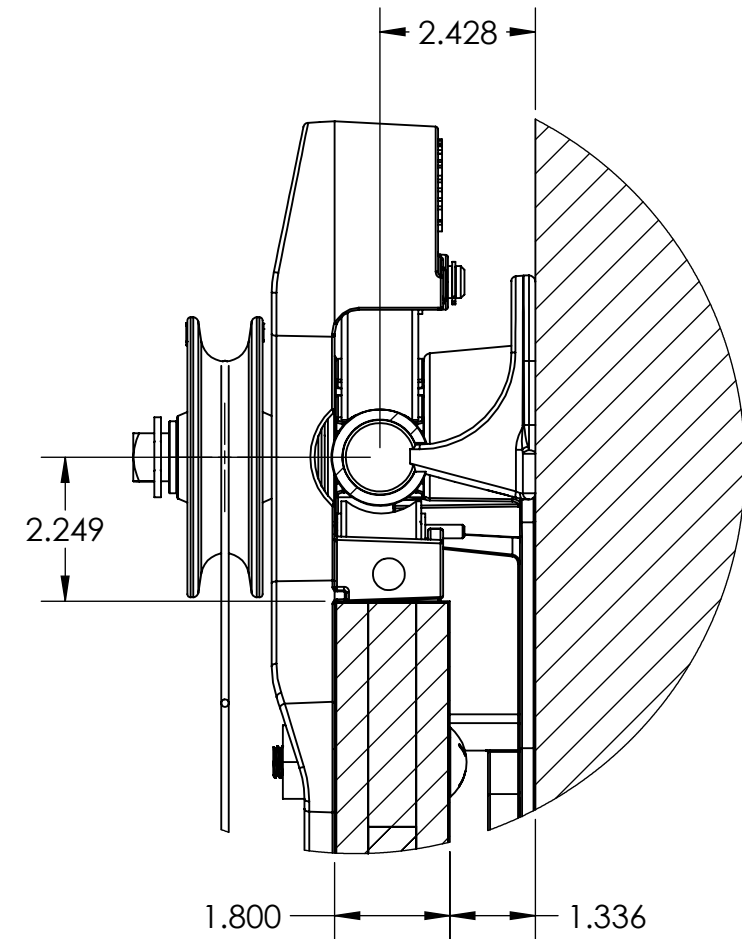
ALLITH MANUFACTURING COMPANY	
DESCRIPTION Series 852 Allith track system with Durand's metal-clad door for 52"w x 84"h opening, left hand	
SIZE B	P/N 416-12-250
REV.	



DETAIL B
SCALE 1 : 5



SECTION D-D
SCALE 1 : 12



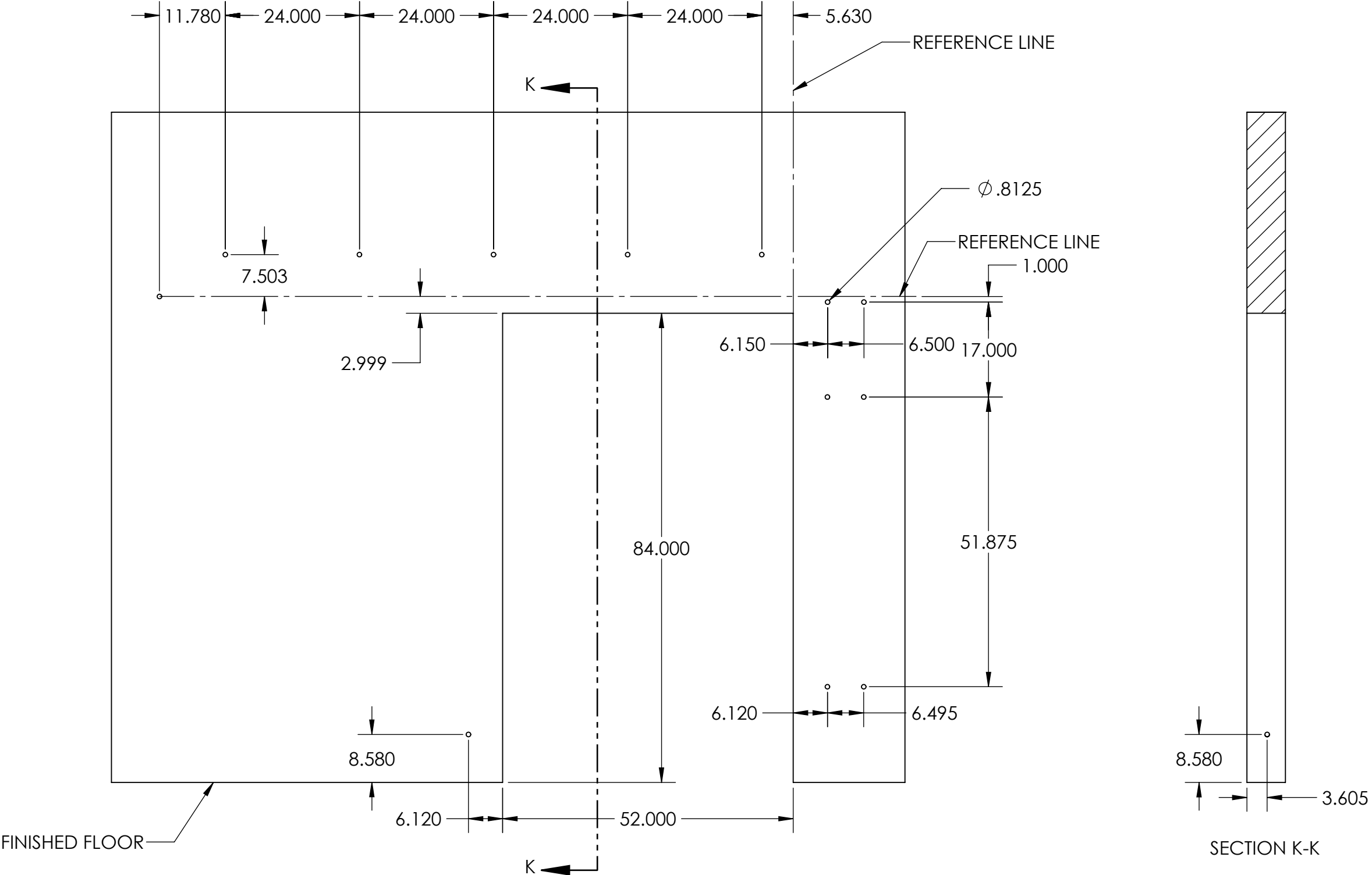
DETAIL E
SCALE 1 : 3

REV.	DESCRIPTION	DATE	BY	APPR'D
REVISION				
THE INFORMATION CONTAINED IN THIS DRAWING IS THE SOLE PROPERTY OF SCOTT WILLO SOLUTION ANY REPRODUCTION IN PART OR WHOLE WITHOUT THE WRITTEN PERMISSION OF SWS IS STRICTLY PROHIBITED.				

UNLESS OTHERWISE SPECIFIED
DIMENSIONS ARE IN INCHES
TOLERANCES ARE:
.X= $\pm .030$
.XX= $\pm .015$
.XXX= $\pm .005$
ANGULAR= $\pm 1^\circ$
MACHINED SURFACES TO HAVE
125 RMS FINISH
CONCENTRICITY= $\pm .002$ T.I.R.
BREAK ALL SHARP EDGES

COPYRIGHTED CAD GENERATED DRAWING. DO NOT MANUALLY UPDATE	
DRAWN BY HT	DRAWN DATE 17-05-2025
CHECKED BY	CHECKED BY
APPROVED BY	APPROVED DATE
SHEET 4 OF 5	THIRD ANGLE PROJECTION
SCALE: 1:30	

ALLITH MANUFACTURING COMPANY	
DESCRIPTION Series 852 Allith track system with Durand's metal-clad door for 52"w x 84"h opening, left hand	
SIZE B	P/N 416-12-250
REV.	



WALL PENETRATION HOLE CENTERS

REV.	DESCRIPTION	DATE	BY	APPR'D
REVISION				
THE INFORMATION CONTAINED IN THIS DRAWING IS THE SOLE PROPERTY OF SCOTT WILLO SOLUTION ANY REPRODUCTION IN PART OR WHOLE WITHOUT THE WRITTEN PERMISSION OF SWS IS STRICTLY PROHIBITED.				

UNLESS OTHERWISE SPECIFIED
DIMENSIONS ARE IN INCHES
TOLERANCES ARE:
.X= ±.030
.XX= ±.015
.XXX= ±.005
ANGULAR= ±1°
MACHINED SURFACES TO HAVE
125 RMS FINISH
CONCENTRICITY= ±.002 T.I.R.
BREAK ALL SHARP EDGES

COPYRIGHTED CAD GENERATED DRAWING, DO NOT MANUALLY UPDATE	
DRAWN BY HT	DRAWN DATE 17-05-2025
CHECKED BY	CHECKED BY
APPROVED BY	APPROVED DATE
SHEET 5 OF 5	THIRD ANGLE PROJECTION
SCALE: 1:30	

ALLITH MANUFACTURING COMPANY	
DESCRIPTION Series 852 Allith track system with Durand's metal-clad door for 52"w x 84"h opening, left hand	
SIZE B	P/N 416-12-250
REV.	