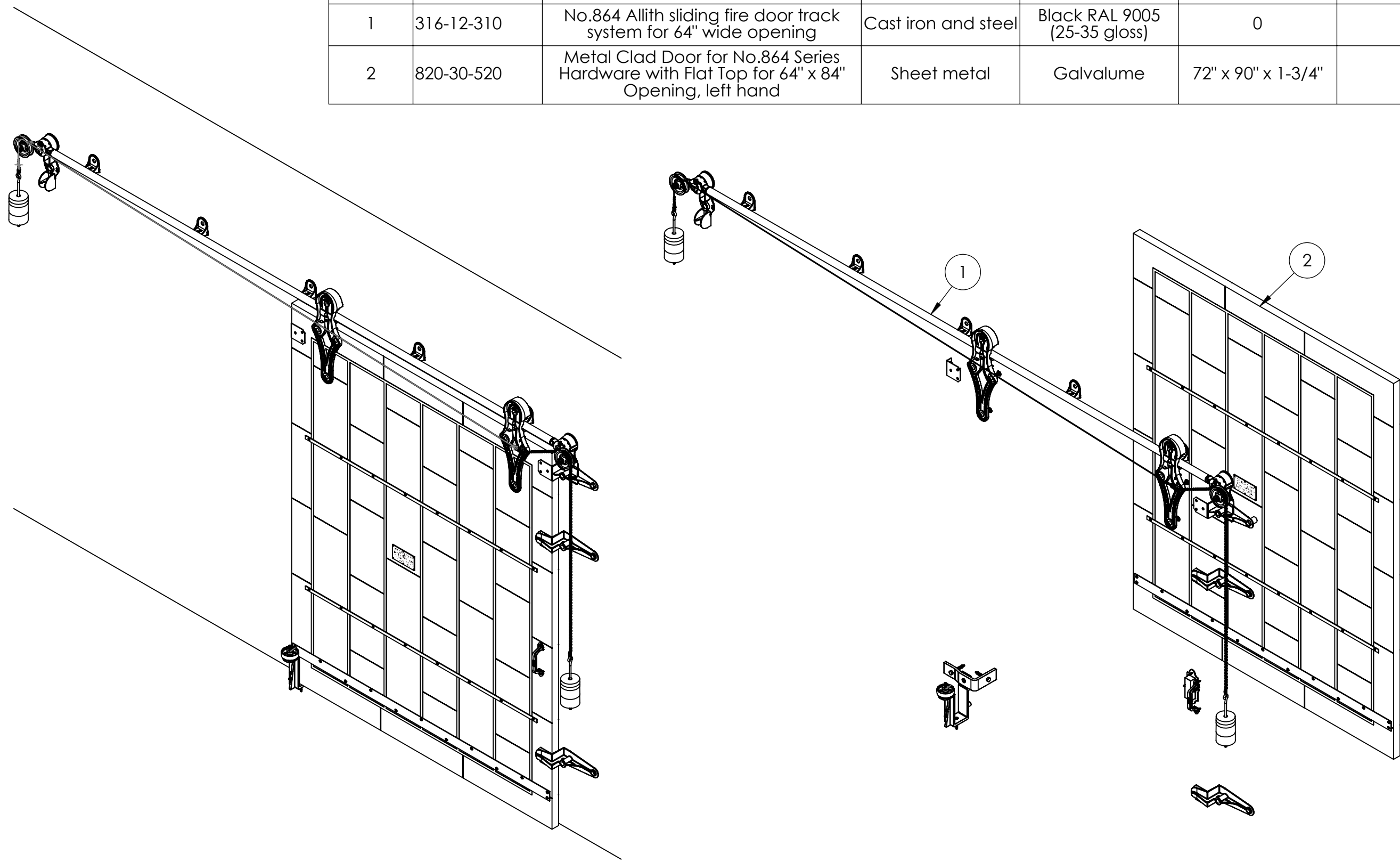


ITEM NO.	PART NUMBER	DESCRIPTION	MATERIAL	COLOR	SIZE	QTY.
1	316-12-310	No.864 Allith sliding fire door track system for 64" wide opening	Cast iron and steel	Black RAL 9005 (25-35 gloss)	0	1
2	820-30-520	Metal Clad Door for No.864 Series Hardware with Flat Top for 64" x 84" Opening, left hand	Sheet metal	Galvalume	72" x 90" x 1-3/4"	1

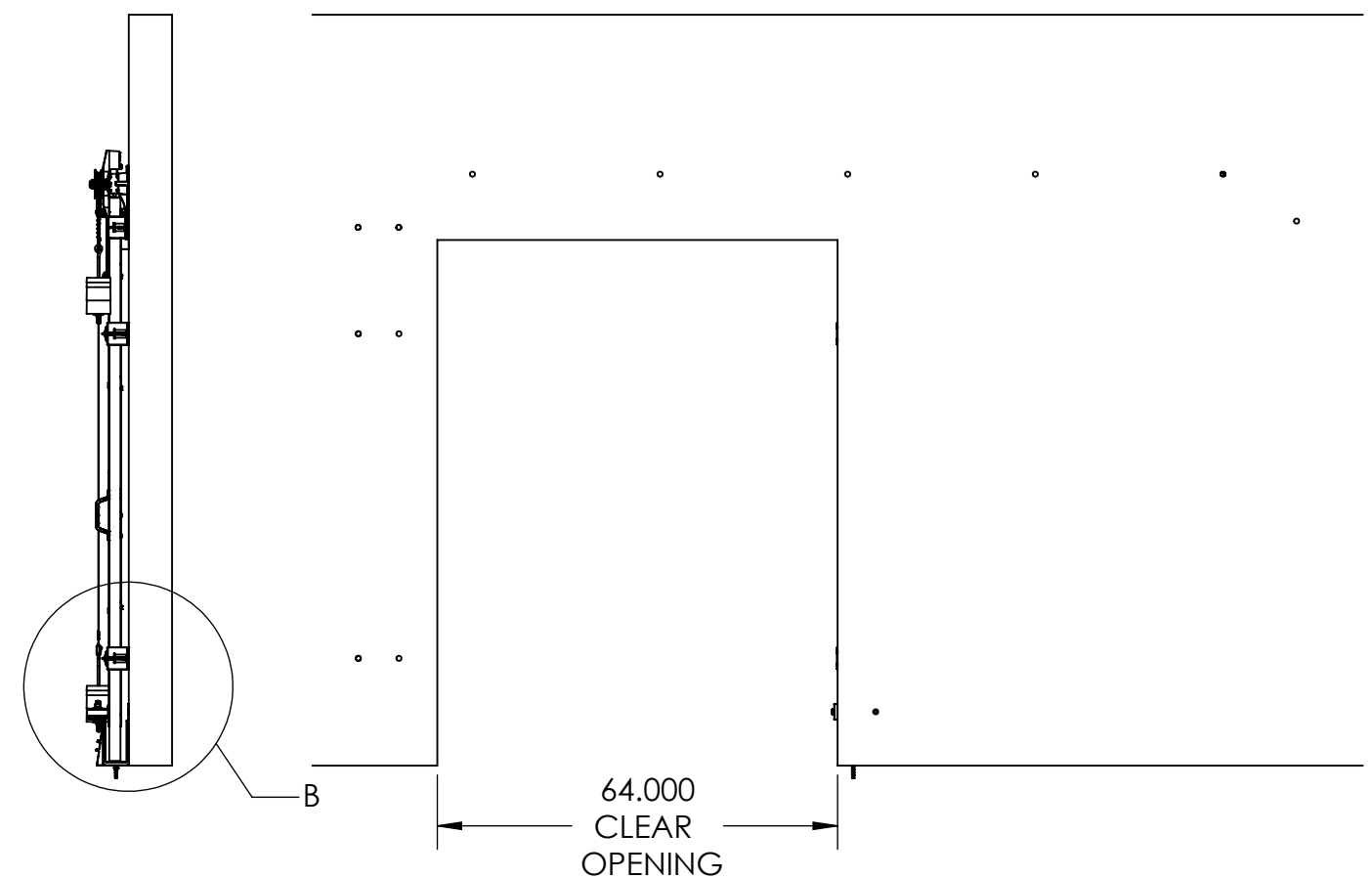


REV.	DESCRIPTION	DATE	BY	APPR'D
REVISION				
THE INFORMATION CONTAINED IN THIS DRAWING IS THE SOLE PROPERTY OF SCOTT WILLO SOLUTION ANY REPRODUCTION IN PART OR WHOLE WITHOUT THE WRITTEN PERMISSION OF SWS IS STRICTLY PROHIBITED.				

UNLESS OTHERWISE SPECIFIED
DIMENSIONS ARE IN INCHES
TOLERANCES ARE:
.X= ±.030
.XX= ±.015
.XXX= ±.005
ANGULAR= ±1°
MACHINED SURFACES TO HAVE
125 RMS FINISH
CONCENTRICITY= ±.002 T.I.R.
BREAK ALL SHARP EDGES

COPYRIGHTED CAD GENERATED DRAWING. DO NOT MANUALLY UPDATE	
DRAWN BY HT	DRAWN DATE 17-05-2025
CHECKED BY	CHECKED BY
APPROVED BY	APPROVED DATE
SHEET 1 OF 5	THIRD ANGLE PROJECTION
SCALE: 1:20	

ALLITH MANUFACTURING COMPANY	
DESCRIPTION Series 864 Allith track system with Durand's metal-clad door for 64"w x 84"h opening, left hand	
SIZE B	P/N 416-12-310
REV.	



OPEN CONDITION

								<div style="font-size: 24pt; font-weight: bold;">ALLITH</div> <div style="font-size: 36pt; font-weight: bold;">MANUFACTURING</div> <div style="font-size: 36pt; font-weight: bold;">COMPANY</div>
REV.	DESCRIPTION		DATE	BY	APPR'D			
REVISION								
THE INFORMATION CONTAINED IN THIS DRAWING IS THE SOLE PROPERTY OF SCOTT WILLO SOLUTION ANY REPRODUCTION IN PART OR WHOLE WITHOUT THE WRITTEN PERMISSION OF SWS IS STRICTLY PROHIBITED.								

UNLESS OTHERWISE SPECIFIED
DIMENSIONS ARE IN INCHES
TOLERANCES ARE:
 .X= $\pm .030$
 .XX= $\pm .015$
 .XXX= $\pm .005$
 ANGULAR= $\pm 1^\circ$
 MACHINED SURFACES TO HAVE
 125 RMS FINISH
 CONCENTRICITY= $\pm .002$ T.I.R.
 BREAK ALL SHARP EDGES

COPYRIGHTED CAD
GENERATED DRAWING,
DO NOT MANUALLY UPDATE

DRAWN BY	DRAWN DATE
HT	17-05-2025
CHECKED BY	CHECKED BY
APPROVED BY	APPROVED DATE

SHEET 2 OF 5

THIRD ANGLE
PROJECTION

SCALE:
1:30

DESCRIPTION

Series 864 Allith track system with Durand's metal-clad door for 64"x 84" opening, left hand

SIZE
B

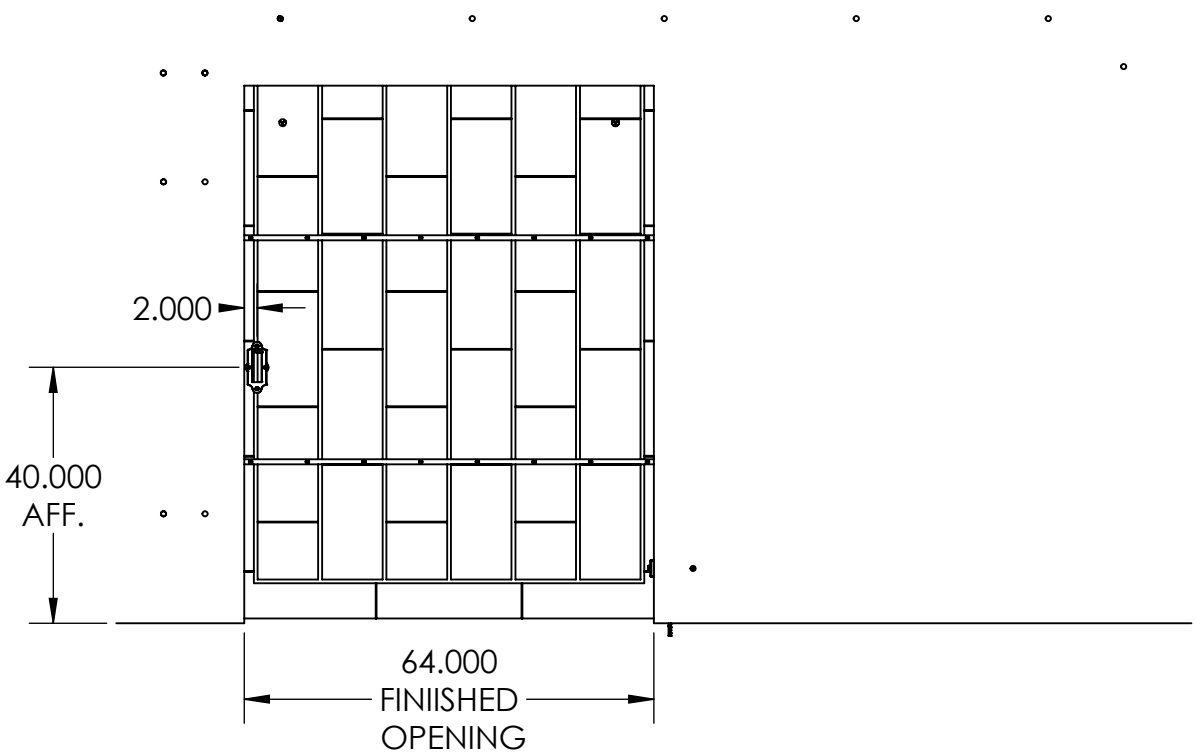
P/N

416-12-310

REV.




INSIDE DOOR CLOSED POSITION



REV.	DESCRIPTION	DATE	BY	APPR'D
REVISION				
THE INFORMATION CONTAINED IN THIS DRAWING IS THE SOLE PROPERTY OF SCOTT WILLO SOLUTION ANY REPRODUCTION IN PART OR WHOLE WITHOUT THE WRITTEN PERMISSION OF SWS IS STRICTLY PROHIBITED.				

UNLESS OTHERWISE SPECIFIED
DIMENSIONS ARE IN INCHES
TOLERANCES ARE:
.X= $\pm .030$
.XX= $\pm .015$
.XXX= $\pm .005$
ANGULAR= $\pm 1^\circ$
MACHINED SURFACES TO HAVE
125 RMS FINISH
CONCENTRICITY= $\pm .002$ T.I.R.
BREAK ALL SHARP EDGES

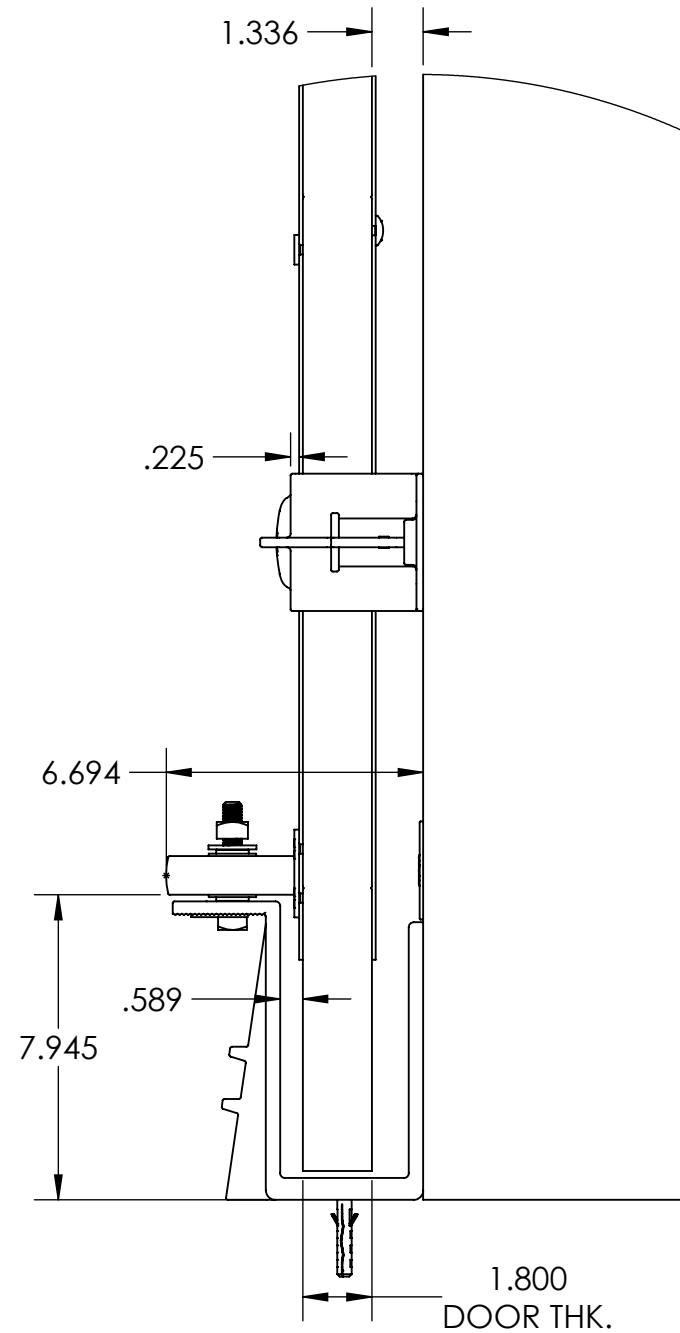
COPYRIGHTED CAD GENERATED DRAWING. DO NOT MANUALLY UPDATE	
DRAWN BY HT	DRAWN DATE 17-05-2025
CHECKED BY	CHECKED BY
APPROVED BY	APPROVED DATE
SHEET 3 OF 5	 THIRD ANGLE PROJECTION
SCALE: 1:30	

**ALLITH
MANUFACTURING
COMPANY**

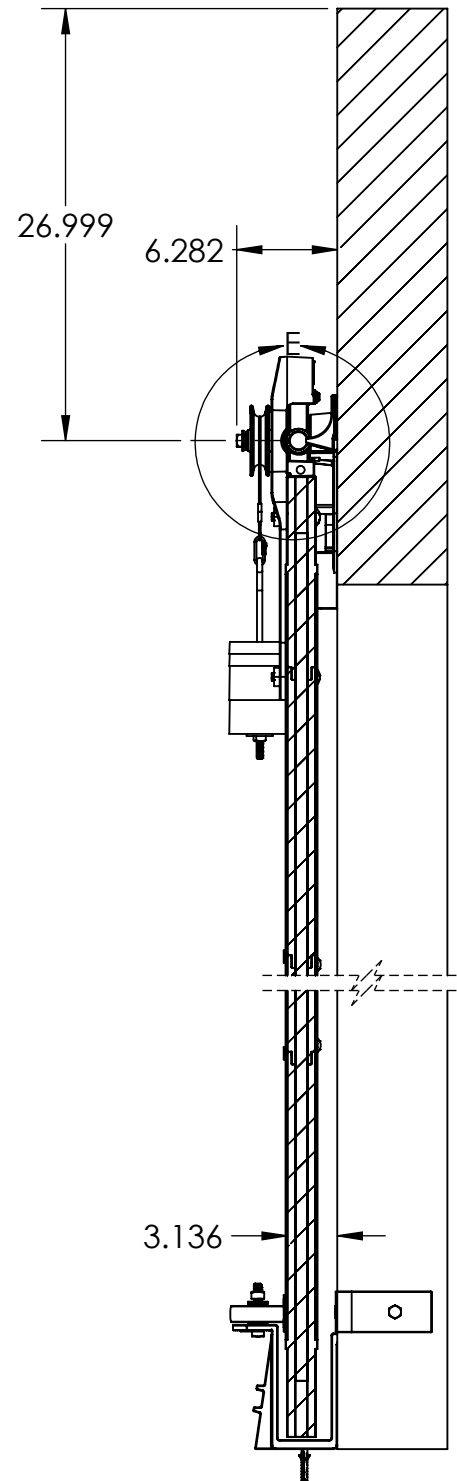
DESCRIPTION
Series 864 Allith track system with Durand's metal-clad door for 64"w x 84"h opening, left hand

SIZE B	P/N 416-12-310
-----------	--------------------------

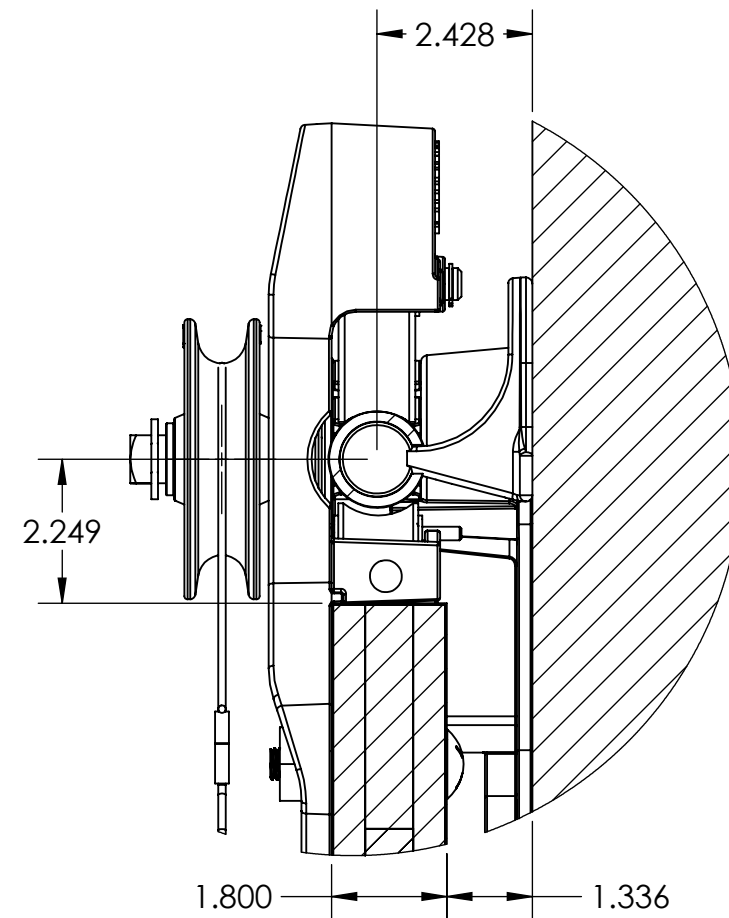
REV.



DETAIL B
SCALE 1 : 5



SECTION D-D
SCALE 1 : 12



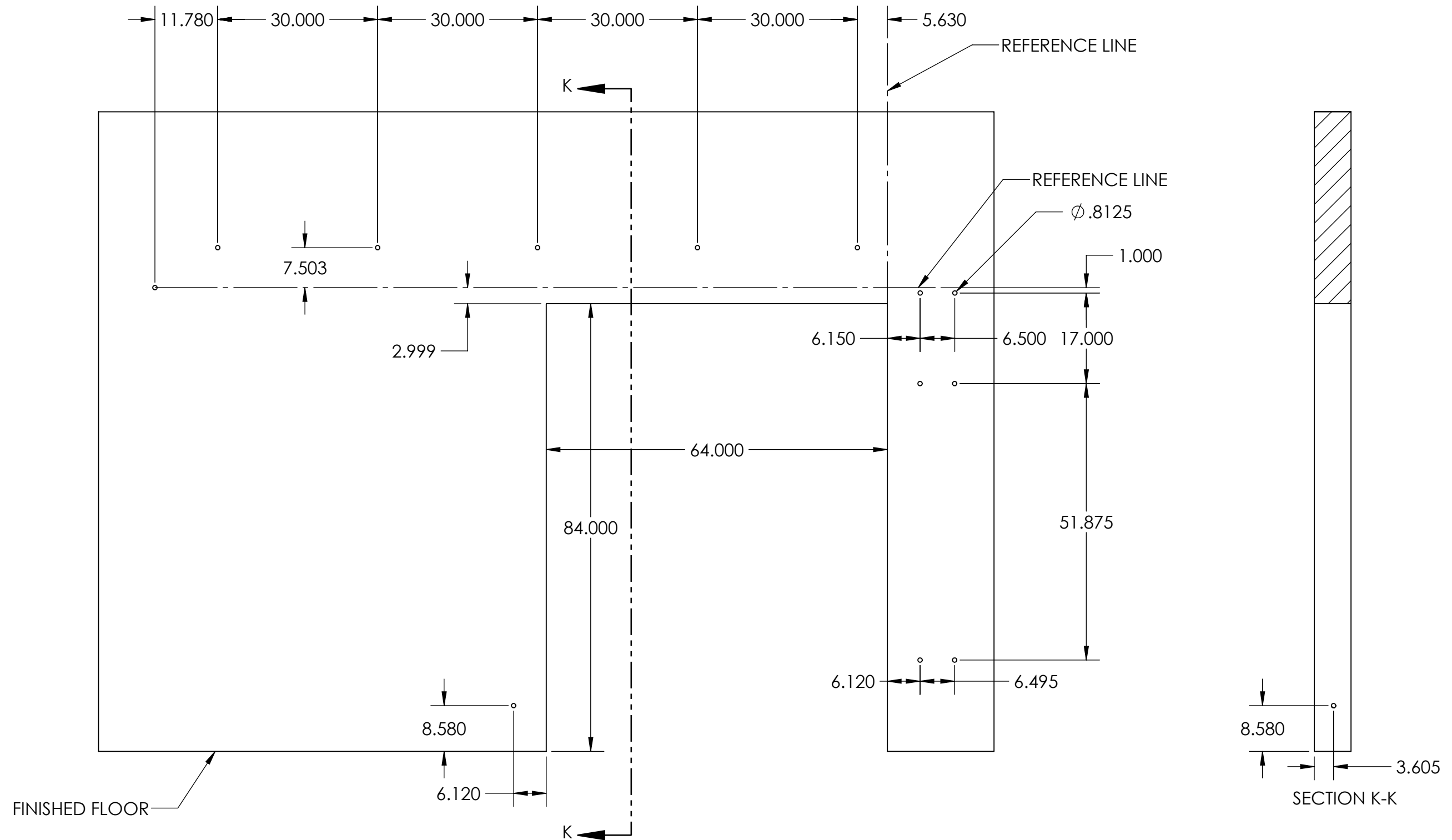
DETAIL E
SCALE 1 : 3

REV.	DESCRIPTION	DATE	BY	APPR'D
REVISION				
THE INFORMATION CONTAINED IN THIS DRAWING IS THE SOLE PROPERTY OF SCOTT WILLO SOLUTION ANY REPRODUCTION IN PART OR WHOLE WITHOUT THE WRITTEN PERMISSION OF SWS IS STRICTLY PROHIBITED.				

UNLESS OTHERWISE SPECIFIED
DIMENSIONS ARE IN INCHES
TOLERANCES ARE:
.X= $\pm .030$
.XX= $\pm .015$
.XXX= $\pm .005$
ANGULAR= $\pm 1^\circ$
MACHINED SURFACES TO HAVE
125 RMS FINISH
CONCENTRICITY= $\pm .002$ T.I.R.
BREAK ALL SHARP EDGES

COPYRIGHTED CAD GENERATED DRAWING, DO NOT MANUALLY UPDATE	
DRAWN BY HT	DRAWN DATE 17-05-2025
CHECKED BY	CHECKED BY
APPROVED BY	APPROVED DATE
SHEET 4 OF 5	THIRD ANGLE PROJECTION
SCALE: 1:30	

ALLITH MANUFACTURING COMPANY	
DESCRIPTION Series 864 Allith track system with Durand's metal-clad door for 64"w x 84"h opening, left hand	
SIZE B	P/N 416-12-310
REV.	



WALL PENETRATION HOLE CENTERS

REV.	DESCRIPTION	DATE	BY	APPR'D
REVISION				
THE INFORMATION CONTAINED IN THIS DRAWING IS THE SOLE PROPERTY OF SCOTT WILLO SOLUTION ANY REPRODUCTION IN PART OR WHOLE WITHOUT THE WRITTEN PERMISSION OF SWS IS STRICTLY PROHIBITED.				

UNLESS OTHERWISE SPECIFIED
DIMENSIONS ARE IN INCHES
TOLERANCES ARE:
.X= ±.030
.XX= ±.015
.XXX= ±.005
ANGULAR= ±1°
MACHINED SURFACES TO HAVE
125 RMS FINISH
CONCENTRICITY= ±.002 T.I.R.
BREAK ALL SHARP EDGES

COPYRIGHTED CAD GENERATED DRAWING. DO NOT MANUALLY UPDATE	
DRAWN BY HT	DRAWN DATE 17-05-2025
CHECKED BY	CHECKED BY
APPROVED BY	APPROVED DATE
SHEET 5 OF 5	
SCALE: 1:30	

ALLITH MANUFACTURING COMPANY	
DESCRIPTION Series 864 Allith track system with Durand's metal-clad door for 64"w x 84"h opening, left hand	
SIZE B	P/N 416-12-310
REV.	